

LEGEND:

- = PROPOSED WELLHEAD.
- ◆ = TOP OF GAS INTERVAL.
- = TARGET BOTTOM HOLE.
- ▲ = SECTION CORNERS LOCATED. (NAD 83)
- △ = SECTION CORNERS RE-ESTABLISHED. (Not Set on Ground.) (NAD 83)

1953 Brass Cap,
0.8' High, Mound
of Stones, Steel
Post
Lat: 39.695234°
Long: 108.145545°

T4S, R96W, 6th P.M.

Rio Blanco County

S89°07'26"W
1370.45' (Meas.)

S89°05'03"W
1371.03' (Meas.)

S89°48'15"W
1318.16' (Meas.)

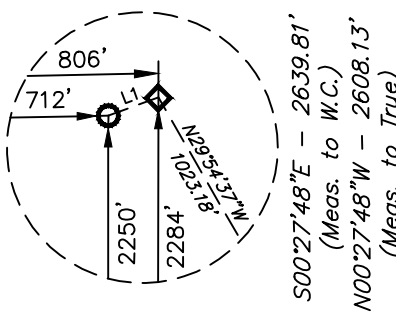
S89°41'16"W
1317.81' (Meas.)

LINE TABLE		
LINE	DIRECTION	LENGTH
L1	S69°59'15"W	99.93'

BASIS OF BEARINGS
N00°46'39"W - 2730.78'
(Meas. to True)

1953 Brass Cap,
0.2' High, Mound
of Stones, Steel
Post
Lat: 39.687828°
Long: 108.145436°
True Position
Lat: 39.687741°
Long: 108.145436°

Detail "A"
No Scale



1953 Brass,
Cap 0.8' High,
Steel Post
Lat: 39.680584°
Long: 108.145383°

PDOP = 1.3

NAD 83 (SURFACE LOCATION)	
LATITUDE = 39°41'03.86" (39.684406)	
LONGITUDE = 108°08'26.74" (108.140762)	
NAD 27 (SURFACE LOCATION)	
LATITUDE = 39°41'03.95" (39.684431)	
LONGITUDE = 108°08'24.45" (108.140126)	
UTM NAD 27 (ZONE 12)	
N: 14423967.53 E: 2445084.94	



NAD 83 (TOP OF GAS INTERVAL)		NAD 83 (TARGET BOTTOM HOLE)	
LATITUDE = 39°41'12.64" (39.686843)		LATITUDE = 39°41'12.30" (39.686750)	
LONGITUDE = 108°08'33.24" (108.142567)		LONGITUDE = 108°08'34.44" (108.142900)	
NAD 27 (TOP OF GAS INTERVAL)		NAD 27 (TARGET BOTTOM HOLE)	
LATITUDE = 39°41'12.72" (39.686868)		LATITUDE = 39°41'12.39" (39.686775)	
LONGITUDE = 108°08'30.95" (108.141931)		LONGITUDE = 108°08'32.15" (108.142265)	
UTM NAD 27 (ZONE 12)		UTM NAD 27 (ZONE 12)	
N: 14424838.95 E: 2444548.87		N: 14424802.00 E: 2444456.02	

BASIS OF BEARINGS

BEARINGS ARE BASED ON THE ASSUMPTION THAT THE WEST LINE OF THE NORTHWEST 1/4 OF SECTION 23 BEARS N00°46'39"W. MONUMENTS DESCRIBED HEREON.

BASIS OF ELEVATION

BENCH MARK (H79) LOCATED IN THE NE 1/4 OF SECTION 35, T4S, R98W, 6th P.M., TAKEN FROM THE BULL FORK QUADRANGLE, COLORADO, 7.5 MINUTE SERIES. (TOPOGRAPHIC MAP) PUBLISHED BY THE UNITED STATES DEPARTMENT OF THE INTERIOR, GEOLOGICAL SURVEY. SAID ELEVATION IS MARKED AS BEING 8535 FEET.



UELS, LLC
Corporate Office * 85 South 200 East
Vernal, UT 84078 * (435) 789-1017



Caerus Oil & Gas LLC

BJU M23A FED 13D-23 496
LOT 6, SECTION 23, T4S, R96W, 6th P.M.
GARFIELD COUNTY, COLORADO

SURVEYED BY	DAYTON SLAUGH, B.H.	SCALE	05-27-20
DRAWN BY	T.L.L.		06-11-20
WELL LOCATION PLAT			

NOTE:

Distances referenced on plat to section lines are perpendicular.

23

See Detail "A" @ Left

Top Of Gas Interval

BJU M23A FED 13D-23 496
Elev. Ungraded Ground = **8106.1'**

1953 Brass Cap,
1.0' High, Mound
of Stones
Lat: 39.680552°
Long: 108.135924°

CERTIFICATE

THIS IS TO CERTIFY THAT THE ABOVE PLAT WAS PREPARED AND LOCATION AS SHOWN WAS STAKED ON THE GROUND FROM FIELD NOTES OF ACTUAL SURVEYS MADE BY ME OR UNDER MY SUPERVISION AND THAT THE SAME ARE TRUE AND CORRECT TO THE BEST OF MY KNOWLEDGE AND BELIEF.

REGISTERED LAND SURVEYOR
REGISTRATION NO. 138180
STATE OF COLORADO
06-12-20

