

Interim Reclamation and Stormwater Inspection

June 11, 2020

Operator: PDC ENERGY INC - 69175

Location ID: 433548

Inspection Document #: 697501655

Weld County, CO

SENE Section 32 T1N R66W

Chris Binschus
Reclamation Specialist, COGCC



COLORADO

**Oil & Gas Conservation
Commission**

Department of Natural Resources

Inspection Photos
Location Name: Phelps /12-32NHZ
Location ID: 433548



Photo 1. Drone aerial imagery from June 11, 2020 illustrates the Phelps location.

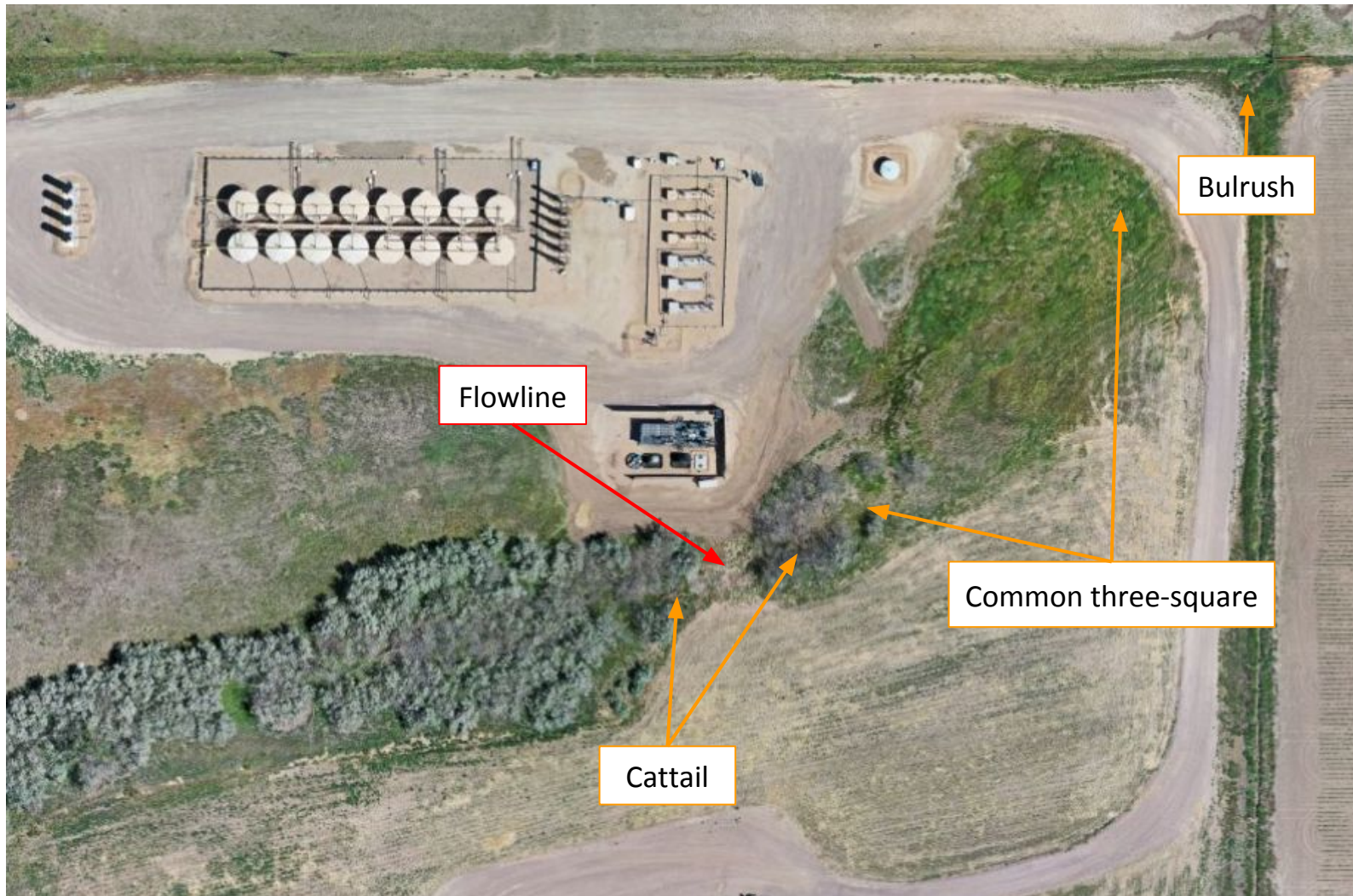


Photo 2. Drone aerial imagery from June 11, 2020. Imagery illustrates some of the obligate wetland vegetation observed in relation to the Phelps disturbance areas. Refer to Photos 3-5 for wetland vegetation.

Inspection Photos
Location Name: Phelps /12-32NHZ
Location ID: 433548



Photo 3. Photo taken west of the flowline area. Photo illustrates Narrowleaf cattail, an obligate wetland plant species.

Inspection Photos
Location Name: Phelps /12-32NHZ
Location ID: 433548



Photo 4. Photo taken east of the flowline area, facing Northeast. Photo illustrates wetland vegetation mostly consisting of Common threesquare, an obligate wetland plant species.

Inspection Photos
Location Name: Phelps /12-32NHZ
Location ID: 433548



Photo 5. Photo taken north of the access road, facing Northeast. Photo illustrates Hardstem bulrush, an obligate wetland plant species.

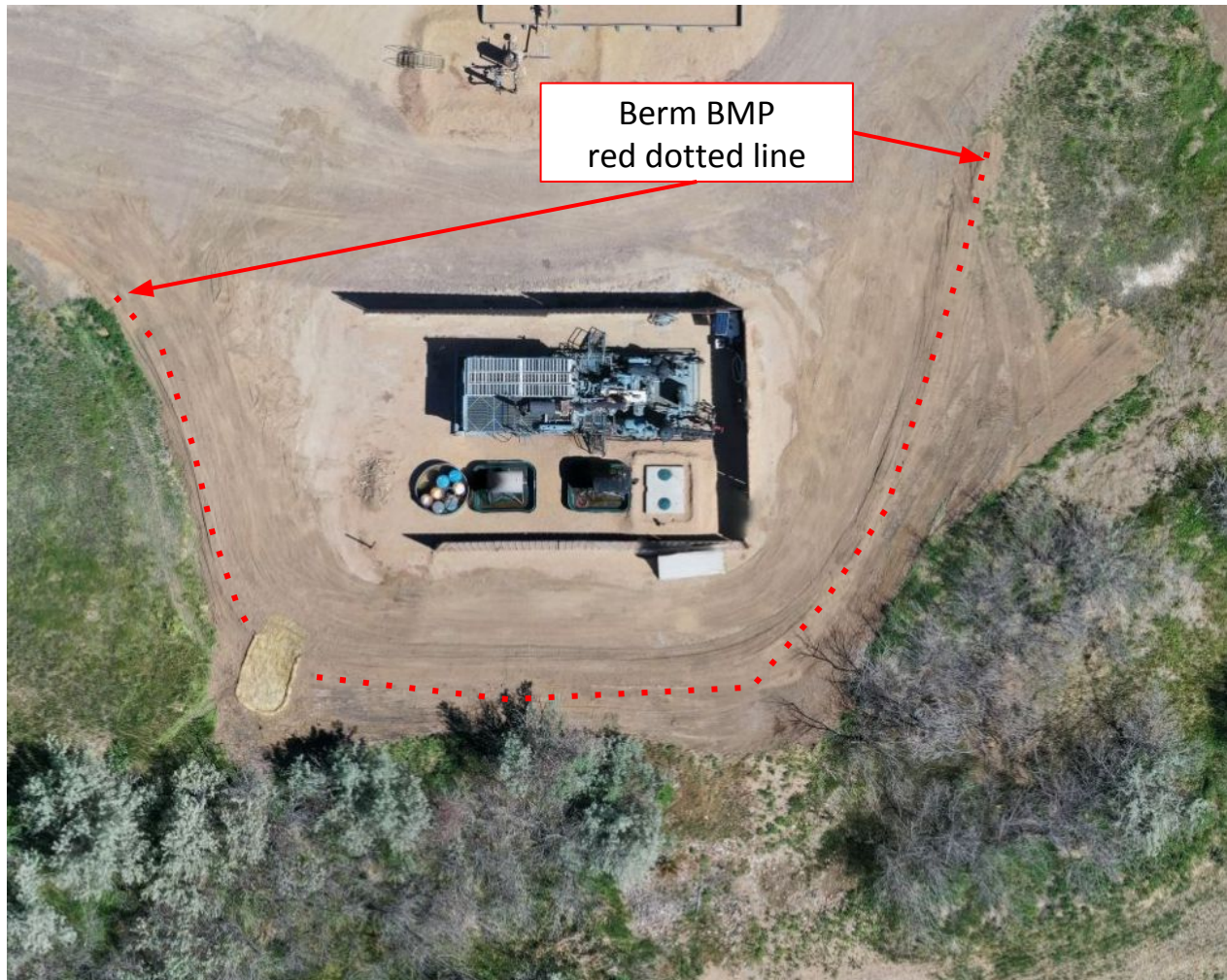


Photo 6. Drone aerial imagery from June 11, 2020 illustrates the Operator has performed some temporary stormwater work in response to the May 27, 2020 Environmental inspection by repositioning the berm BMP and installing a temporarily stabilized outlet. However, the current position of the temporarily stabilized outlet is not protective of the wetland.

Inspection Photos
Location Name: Phelps /12-32NHZ
Location ID: 433548

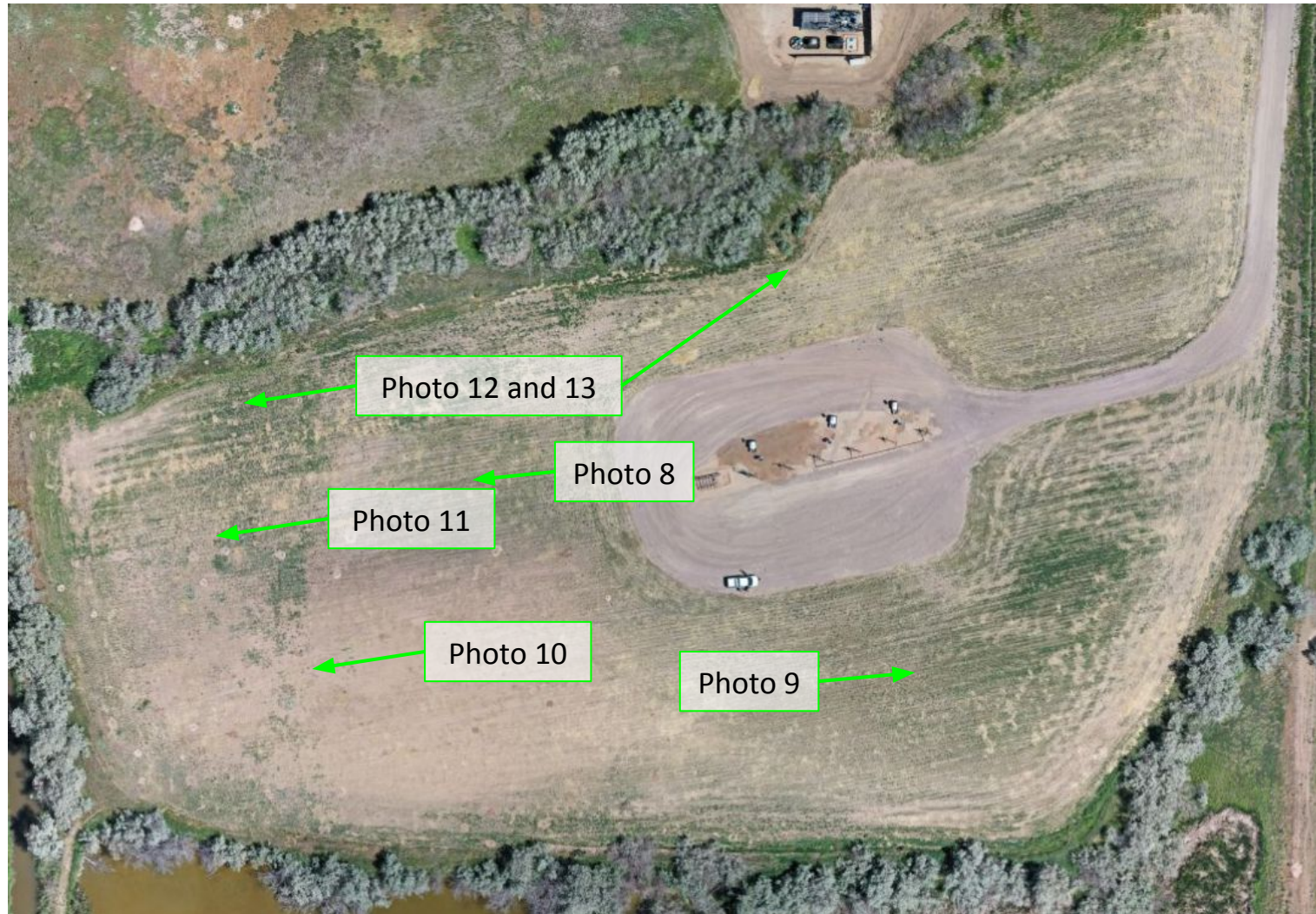


Photo 7. Drone aerial imagery from June 11, 2020 illustrates the interim reclamation area for the well location and associated field inspection photos.

Inspection Photos
Location Name: Phelps /12-32NHZ
Location ID: 433548



Photo 8. Photo taken from western interim reclamation area of the well location, facing West. Photo illustrates the Operator has performed interim reclamation activities with the evidence of desirable plant species establishment.

Inspection Photos
Location Name: Phelps /12-32NHZ
Location ID: 433548



Photo 9. Photo taken from southeastern interim reclamation area of the well location, facing East. See comments under Photo 7.

Inspection Photos
Location Name: Phelps /12-32NHZ
Location ID: 433548



Photo 10. Photo taken from southwestern interim reclamation area of the well location, facing West. Photo illustrates the Operator has performed interim reclamation activities; however, vegetation establishment is not uniform. It appears vegetation establishment may be affected by prairie dogs.

Inspection Photos
Location Name: Phelps /12-32NHZ
Location ID: 433548



Photo 11. Photo taken from western interim reclamation area of the well location, facing West. Photo illustrates a List C Colorado noxious weed, Field bindweed.

Inspection Photos
Location Name: Phelps /12-32NHZ
Location ID: 433548



Photo 12. Photo taken from northwestern interim reclamation area of the well location. Photo illustrates a List B Colorado noxious weed, Canada thistle.

Inspection Photos
Location Name: Phelps /12-32NHZ
Location ID: 433548



Photo 13. Photo taken from northern interim reclamation area of the well location. Photo illustrates a List B Colorado noxious weed, Musk thistle.