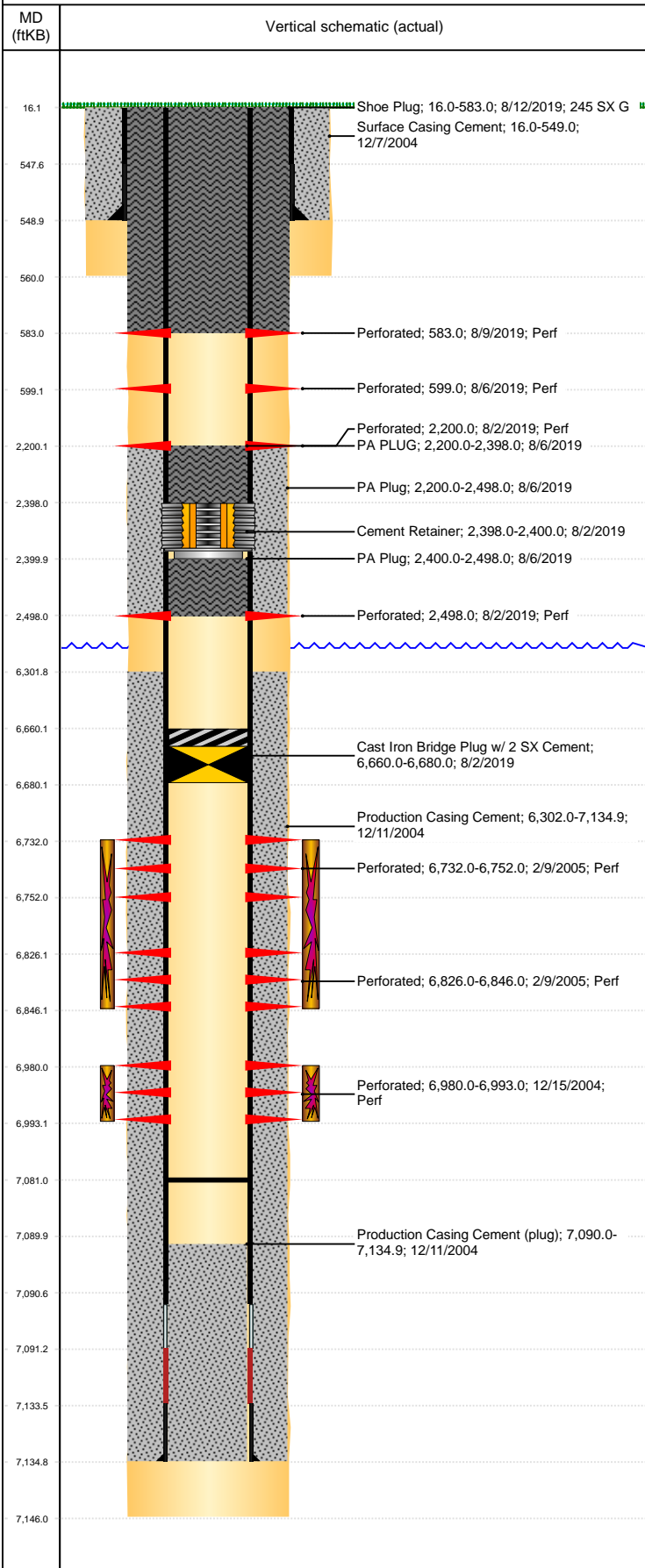


**Well Name: SMITH C09-19**

VERTICAL, ORIGINAL HOLE, 6/9/2020 2:40:29 PM



Well Header										
API 05-123-21929		Business Unit DJ BASIN			District 15		Well Config VERTICAL			
KB - GL / MSL (ft... 16.00		Spud Date 12/6/2004		P & A Date 1/31/2020		Well Production Status PA			SoRT Yes	
Comment PUSH CBP TO 7081' 3/10/05										
WELLHEAD IS 5000# WP, 3000# BACKSIDE VALVE RATING										
Surface Location (Congressional)										
Qtr 3 NE	Qtr 4 NW	Section 9	Twnshp 4	Twnsh... N	Range 64	Rng E/... W	Actual Latitude (°) 40.33148591	Actual Longitude (°) -104.55987400		
Wellbore Sections										
Section Des			Size (in)			Act Top, MD (ftKB)		Act Btm, MD (ftKB)		
SURFACE			12 1/4			16		560		
PRODUCTION			7 7/8			560		7,146		
Casing Strings										
Csg Des		Run Date		OD (in)	Wt/Len (lb/ft)	Grade	Top, MD (ftKB)	MD (ftKB)		
Surface		12/7/2004		8 5/8	24.00	J-55	16.0	549.0		
Production		12/11/2004		4 1/2	11.60	M-80	16.0	7,134.9		
Cement										
Des				Start Date		Top (ftKB)		Btm (ftKB)		
Surface Casing Cement				12/7/2004		16.0		549.0		
Production Casing Cement				12/11/2004		6,302.0		7,134.9		
PA PLUG				8/6/2019		2,200.0		2,398.0		
PA Plug				8/6/2019		2,400.0		2,498.0		
PA Plug				8/6/2019		2,200.0		2,498.0		
Shoe Plug				8/12/2019		16.0		583.0		
Zone Statuses										
Zone Name	Status Date	Status	Fluid Type	Job				Prod Method		
CODELL	4/6/2010	PR	Water	PLUG AND ABANDON, 7/31/2019 00:00				Flowing		
CODELL	8/2/2019	AB								
NIOBRARA	10/27/2016	SI								
NIOBRARA	8/2/2019	AB								
Perforation Data										
Linked Zone		Bnch/Stg	Entered Shot Total	Top (ftKB)		Btm (ftKB)		Date		
			6	583.00		583.00		8/9/2019		
			6	599.00		599.00		8/6/2019		
			6	2,200.00		2,200.00		8/2/2019		
			6	2,498.00		2,498.00		8/2/2019		
			NIOBRARA, ORIGINAL HOLE	120	6,732.00		6,752.00		2/9/2005	
			NIOBRARA, ORIGINAL HOLE	120	6,826.00		6,846.00		2/9/2005	
CODELL, ORIGINAL HOLE			52	6,980.00		6,993.00		12/15/2004		
Stimulation Intervals										
Zone			Start Date			Top (ftKB)		Btm (ftKB)		
NIOBRARA, ORIGINAL HOLE			2/16/2005			6,732.0		6,846.0		
CODELL, ORIGINAL HOLE			12/20/2004			6,980.0		6,993.0		
Other In Hole										
Run Date	Des			Make		OD (in)	Top (ftKB)	Btm (ftKB)		
8/2/2019	Cast Iron Bridge Plug w/ 2 SX Cement					4	6,660.0	6,680.0		
8/2/2019	Cement Retainer					4	2,398.0	2,400.0		
Logs										
Date		Type				Top, MD (ftKB)		Btm, MD (ftKB)		
12/10/2004		COMPENSATED DENSITY				3,500.0		7,120.0		
12/10/2004		INDUCTION				549.0		7,140.0		
12/15/2004		CBL/CCL/GR				6,150.0		7,071.0		
Plug Back Total Depths										
Date		Type		Com				Depth (ftKB)		
12/15/2004		FILL		DEPTH LOGGER ON CBL				7,072.0		
3/10/2005		PLUG REMNANTS		DRILL CBP AND PUSH TO 7081'				7,081.0		