

# PROJECT DETAILS: Garfield County, CO

Geodetic System: US State Plane 1983  
Datum: North American Datum 1983  
Ellipsoid: GRS 1980  
Zone: Colorado Central Zone  
System Datum: Mean Sea Level

# WELL DETAILS: CC 0697-10-04E

+N/-S 0.0 +E/-W 0.0 Northing 1634529.84 Easting 2236820.21 Latitude 39.544356 Longitude -108.206648 B-12

## Project: Garfield County, CO

Site: CC 0610-21-41 Pad

Well: CC 0697-10-04E

Wellbore: Wellbore #1

Design: Design #3

Latitude: 39.544356

Longitude: -108.206648

Ground Level: 8595.0

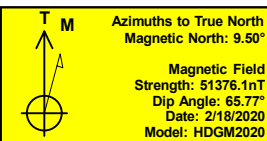
RKB @ 8625.0usft (H&P #522)

## FORMATION TOP DETAILS

TVDPath	MDPath	Formation
1017.0	1029.4	Mahogany
2985.0	3132.9	Wasatch
4775.0	5047.1	Wasatch 'G' Sand
4985.0	5271.7	Fort Union
6519.0	6912.2	Ohio Creek
6707.0	7112.6	Williams Fork
7433.0	7851.3	TOG
8957.0	9375.3	Cameo
9355.0	9773.3	Base Cameo Coal
9370.0	9788.3	Rollins
9620.0	10038.3	Cozzette
9840.0	10258.3	Corcoran

## REFERENCE INFORMATION

Co-ordinate (N/E) Reference: Well CC 0697-10-04E - Slot B-12, True North  
Vertical (TVD) Reference: RKB @ 8625.0usft (H&P #522)  
Section (VS) Reference: Slot - B-12(0.0N, 0.0E)  
Measured Depth Reference: RKB @ 8625.0usft (H&P #522)  
Calculation Method: Minimum Curvature

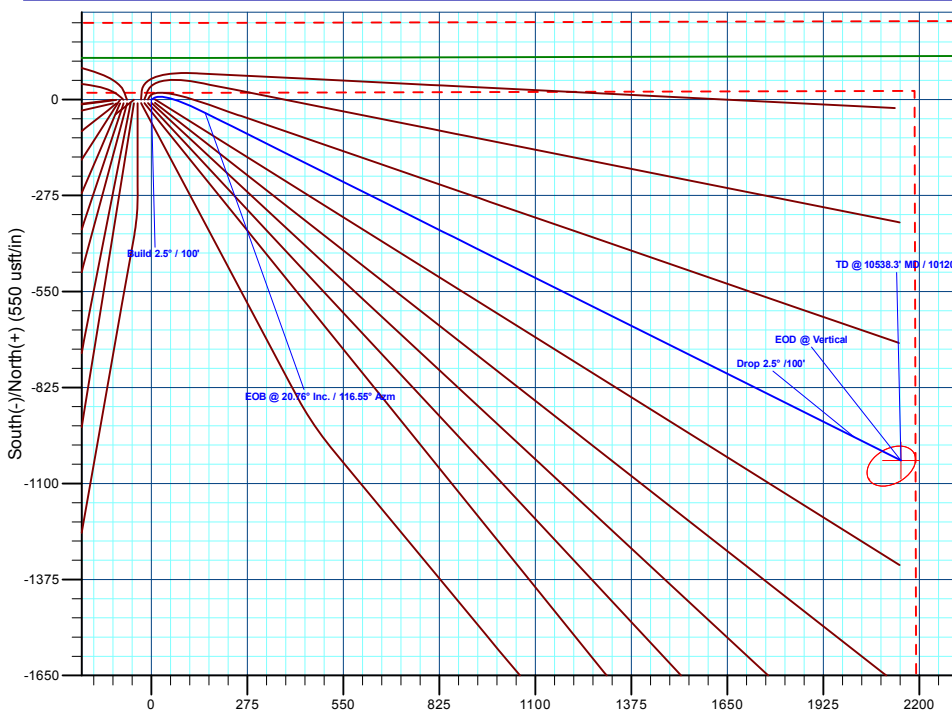


## DESIGN TARGET DETAILS

Name	TVD	+N/-S	+E/-W	Northing	Easting	Latitude	Longitude
PBHL - CC 0697-10-04E	10120.0	-1034.2	2147.1	1633432.10	2238935.58	39.541516	-108.199035

## SECTION DETAILS

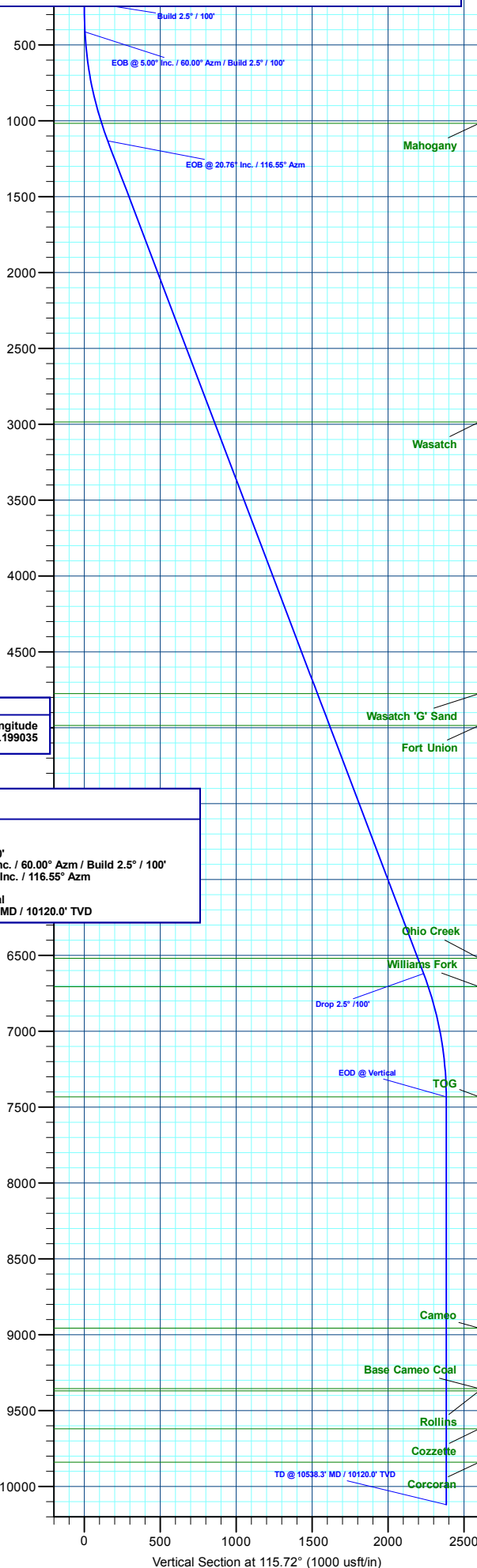
MD	Inc	Azi	TVD	+N/-S	+E/-W	Dleg	TFace	VSect	Annotation
0.0	0.00	0.00	0.0	0.0	0.0	0.00	0.00	0.0	
215.0	0.00	0.00	215.0	0.0	0.0	0.00	0.00	0.0	Build 2.5° / 100'
415.0	5.00	60.00	414.7	4.4	7.6	2.50	60.00	4.9	EOB @ 5.00° Inc. / 60.00° Azm / Build 2.5° / 100'
1153.3	20.76	116.55	1133.9	-38.4	153.7	2.50	69.06	155.1	EOB @ 20.76° Inc. / 116.55° Azm
7021.0	20.76	116.55	6620.8	-967.8	2014.1	0.00	0.00	2234.5	Drop 2.5° / 100'
7851.3	0.00	0.00	7433.0	-1034.2	2147.1	2.50	180.00	2363.2	EOD @ Vertical
10538.3	0.00	0.00	10120.0	-1034.2	2147.1	0.00	0.00	2363.2	TD @ 10538.3' MD / 10120.0' TVD



Plan: Design #3 (CC 0697-10-04E/Wellbore #1)

Created By: Will Jircik

Date: 10:39, April 09 2020



Vertical Section at 115.72° (1000 usft/in)