

T6N, R62W, 6th P.M.

- 1996 Alum. Cap,
#12374, 1.5'
Below Road Surface
Lat: 40.480437°
Long: 104.280118°

2010 Alum. Cap,
0.6' Below Road
Surface
Lat: 40.480548°
Long: 104.270817°

R	R
62	61
W	W

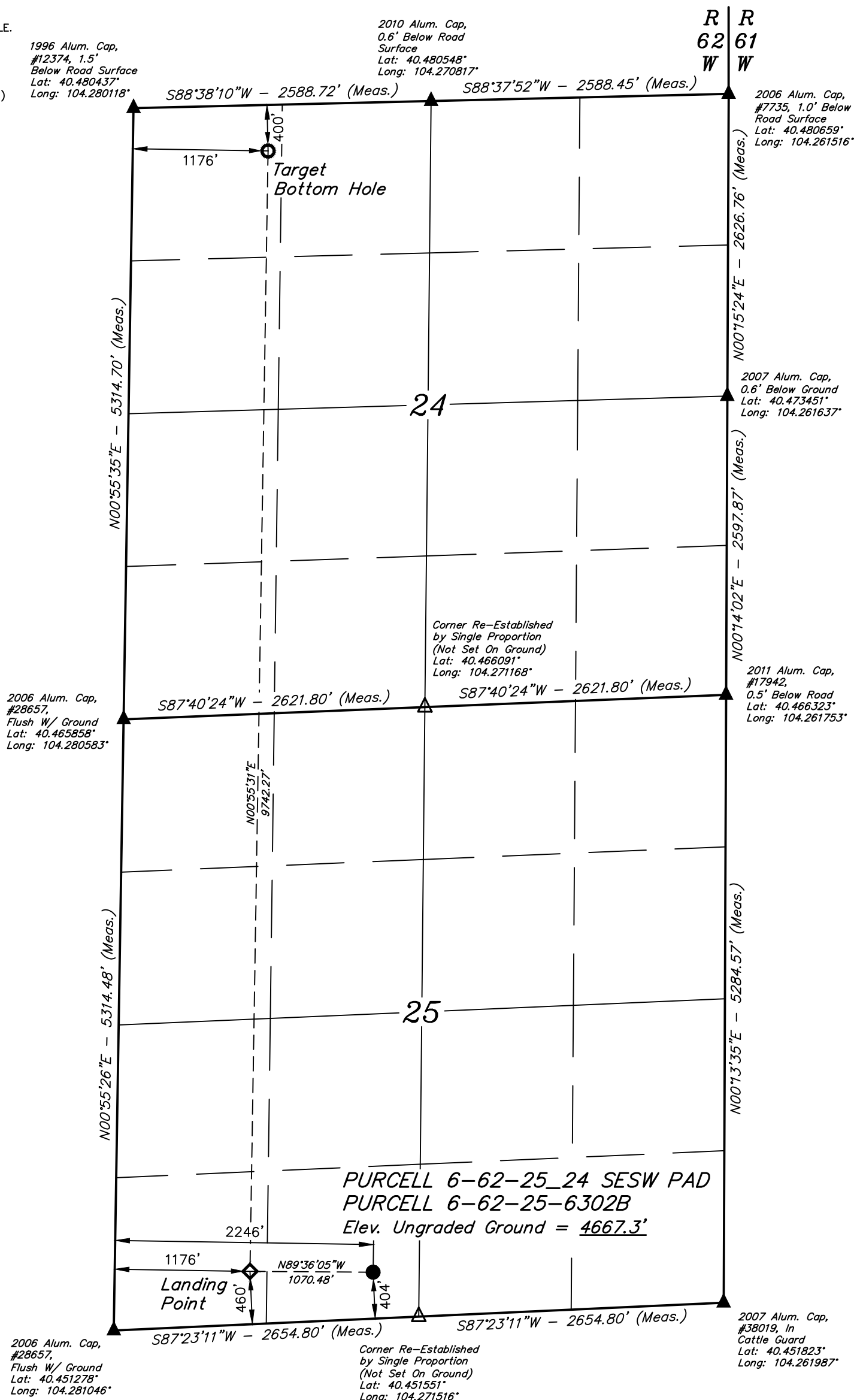
2006 Alum. Cap,
#7735, 1.0' Below
Road Surface
Lat: 40.480659°
Long: 104.261516°

2007 Alum. Cap,
0.6' Below Ground
Lat: 40.473451°
Long: 104.261637°

2011 Alum. Cap,
#17942,
0.5' Below Road
Lat: 40.466323°
Long: 104.261753°

2007 Alum. Cap,
#38019, in
Cattle Guard
Lat: 40.451823°
Long: 104.261987°

Distances referenced
on plat to section lines
are perpendicular.



A horizontal scale bar with alternating black and white segments. It is labeled with '1000'' at both ends and '500'' and '0'' in the middle.

NAD 83 (SURFACE LOCATION)	NAD 83 (LANDING POINT)	NAD 83 (TARGET BOTTOM HOLE)
LATITUDE = 40°27'09.43" (40.452619°)	LATITUDE = 40°27'09.59" (40.452664°)	LATITUDE = 40°28'45.80" (40.479390°)
LONGITUDE = 104°16'22.55" (104.272932°)	LONGITUDE = 104°16'36.40" (104.276776°)	LONGITUDE = 104°16'33.33" (104.275924°)
NAD 27 (SURFACE LOCATION)	NAD 27 (LANDING POINT)	NAD 27 (TARGET BOTTOM HOLE)
LATITUDE = 40°27'09.49" (40.452637°)	LATITUDE = 40°27'09.65" (40.452681°)	LATITUDE = 40°28'45.86" (40.479407°)
LONGITUDE = 104°16'20.73" (104.272426°)	LONGITUDE = 104°16'34.57" (104.276270°)	LONGITUDE = 104°16'31.51" (104.275419°)
STATE PLANE NAD 83 (CO. NORTH)	STATE PLANE NAD 83 (CO. NORTH)	STATE PLANE NAD 83 (CO. NORTH)
N: 1410092.15' E: 3341475.11'	N: 1410093.60' E: 3340404.97'	N: 1419832.28' E: 3340507.66'
STATE PLANE NAD 27 (CO. NORTH)	STATE PLANE NAD 27 (CO. NORTH)	STATE PLANE NAD 27 (CO. NORTH)
N: 410093.20' E: 2341624.90'	N: 410094.65' E: 2340554.75'	N: 419833.06' E: 2340657.36'

CERTIFICATE

THIS IS TO CERTIFY THAT THE ABOVE MAP WAS PREPARED FROM FIELD NOTES OF ACTUAL SURVEYS MADE BY ME OR UNDER MY SUPERVISION, AND THAT THE SAME ARE TRUE AND CORRECT TO THE BEST OF MY KNOWLEDGE AND BELIEF.

REGISTERED LAND SURVEYOR
REGISTRATION NO. 28285
STATE OF COLORADO
10-03-19

BASIS OF ELEVATION
OPUS SOLUTION GENERATED NAVD 88



UELS, LLC
Corporate Office * 85 South 200 East
Vernal, UT 84078 * (435) 789-1017



PURCELL 6-62-25 24 SESW PAD
PURCELL 6-62-25-6302B
SE 1/4 SW 1/4, SECTION 25, T6N, R62W, 6th P.M.
WELD COUNTY, COLORADO

SURVEYED BY	RYAN WILLIAMS	09-20-19	SCALE
DRAWN BY	C.C.	09-20-19	1" = 1000'

WELL LOCATION PLAT