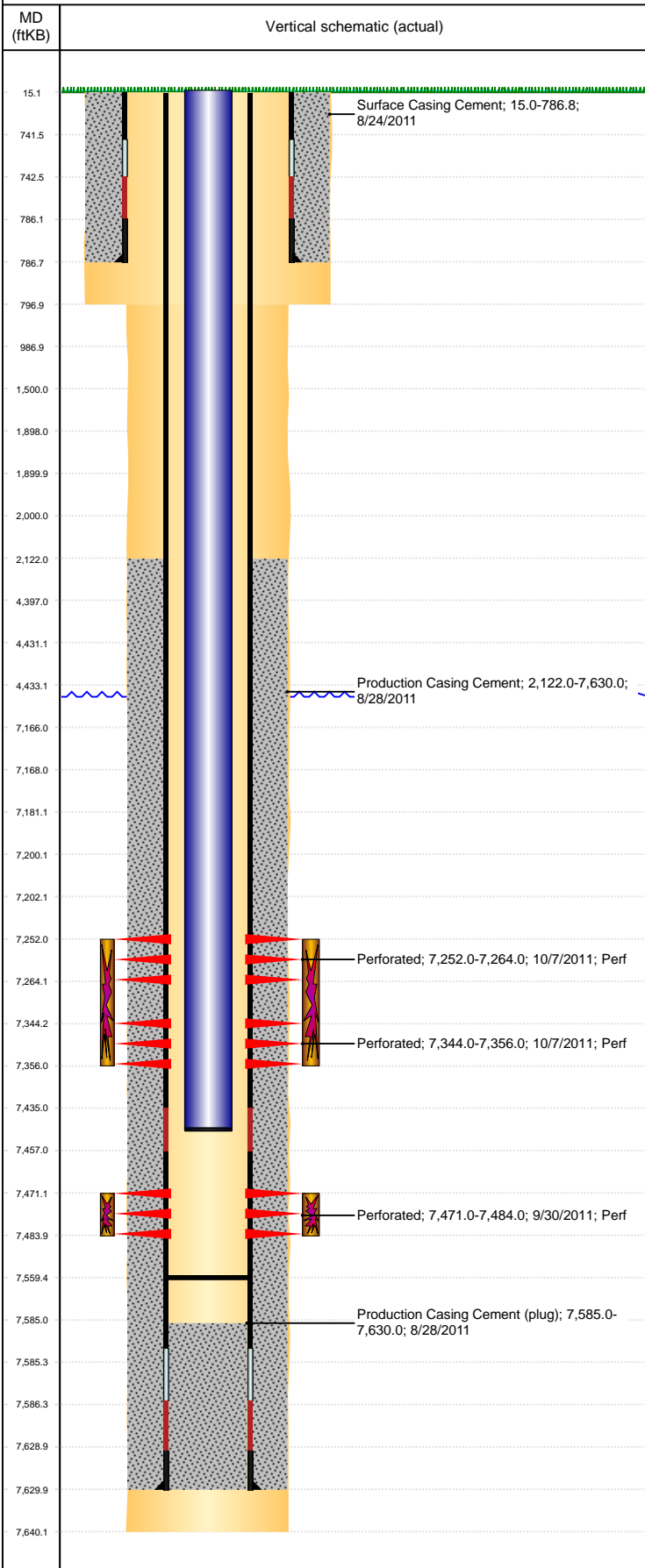


**Well Name: DECHANT D18-30D**

DEVIATED, ORIGINAL HOLE, 6/19/2020 5:30:57 PM



**Well Header**

API 05-123-33995	Business Unit DJ BASIN	District 15	Well Config DEVIATED
KB - GL / MSL (ft... 15.00	Spud Date 8/23/2011	P & A Date	Well Production Status PR
Comment			SoRT No

**Surface Location (Congressional)**

Qtr 3 SE	Qtr 4 SW	Section 7	Twnshp 3	Twnsh... N	Range 64	Rng E... W	Actual Latitude (°) 40.23421520	Actual Longitude (°) -104.59609632
-------------	-------------	--------------	-------------	---------------	-------------	---------------	------------------------------------	---------------------------------------

**Wellbore Sections**

Section Des	Size (in)	Act Top, MD (ftKB)	Act Btm, MD (ftKB)
SURFACE	12 1/4	15	797
PRODUCTION	7 7/8	797	7,640

**Casing Strings**

Csg Des	Run Date	OD (in)	Wt/Len (lb/ft)	Grade	Top, MD (ftKB)	MD (ftKB)
Surface	8/24/2011	8 5/8	24.00	J-55	15.0	786.8
Production	8/28/2011	4 1/2	11.60	M-80	15.0	7,630.0

**Cement**

Des	Start Date	Top (ftKB)	Btm (ftKB)
Surface Casing Cement	8/24/2011	15.0	786.8
Production Casing Cement	8/28/2011	2,122.0	7,630.0

**Zone Statuses**

Zone Name	Status Date	Status	Fluid Type	Job	Prod Method
NIOBRARA	10/20/2011	PR		DRILLING/COMPLETION - ORIGINAL, 8/23/2011...	
CODELL	10/20/2011	PR		DRILLING/COMPLETION - ORIGINAL, 8/23/2011...	

**Perforation Data**

Linked Zone	Bnch/Stg	Entered Shot Total	Top (ftKB)	Btm (ftKB)	Date
NIOBRARA, ORIGINAL HOLE		24	7,252.00	7,264.00	10/7/2011
NIOBRARA, ORIGINAL HOLE		24	7,344.00	7,356.00	10/7/2011
CODELL, ORIGINAL HOLE	01	52	7,471.00	7,484.00	9/30/2011

**Stimulation Intervals**

Zone	Start Date	Top (ftKB)	Btm (ftKB)
NIOBRARA, ORIGINAL HOLE	10/7/2011	7,252.0	7,356.0
CODELL, ORIGINAL HOLE	10/7/2011	7,471.0	7,484.0

**Other In Hole**

Run Date	Des	Make	OD (in)	Top (ftKB)	Btm (ftKB)
1/31/2019	Plunger Lift		1 7/8		

**Logs**

Date	Type	Top, MD (ftKB)	Btm, MD (ftKB)
8/27/2011	Caliper/Comp. Density/Neutron/GR/SP/ML	787.0	7,640.0
8/27/2011	DIL/GR/SP/Caliper	787.0	7,640.0
9/19/2011	CBL/CCL/GR	1,490.0	7,564.0
6/15/2013	GYRO	15.0	7,400.0

**Plug Back Total Depths**

Date	Type	Com	Depth (ftKB)
9/19/2011	FILL	DEPTH LOGGER	7,565.0
12/14/2011	FILL	DRILLED OUT CFTP AND C/O SAND TO 7559.50' KB AND DID...	7,559.5