



Crestone Peak Resources

Schlumberger

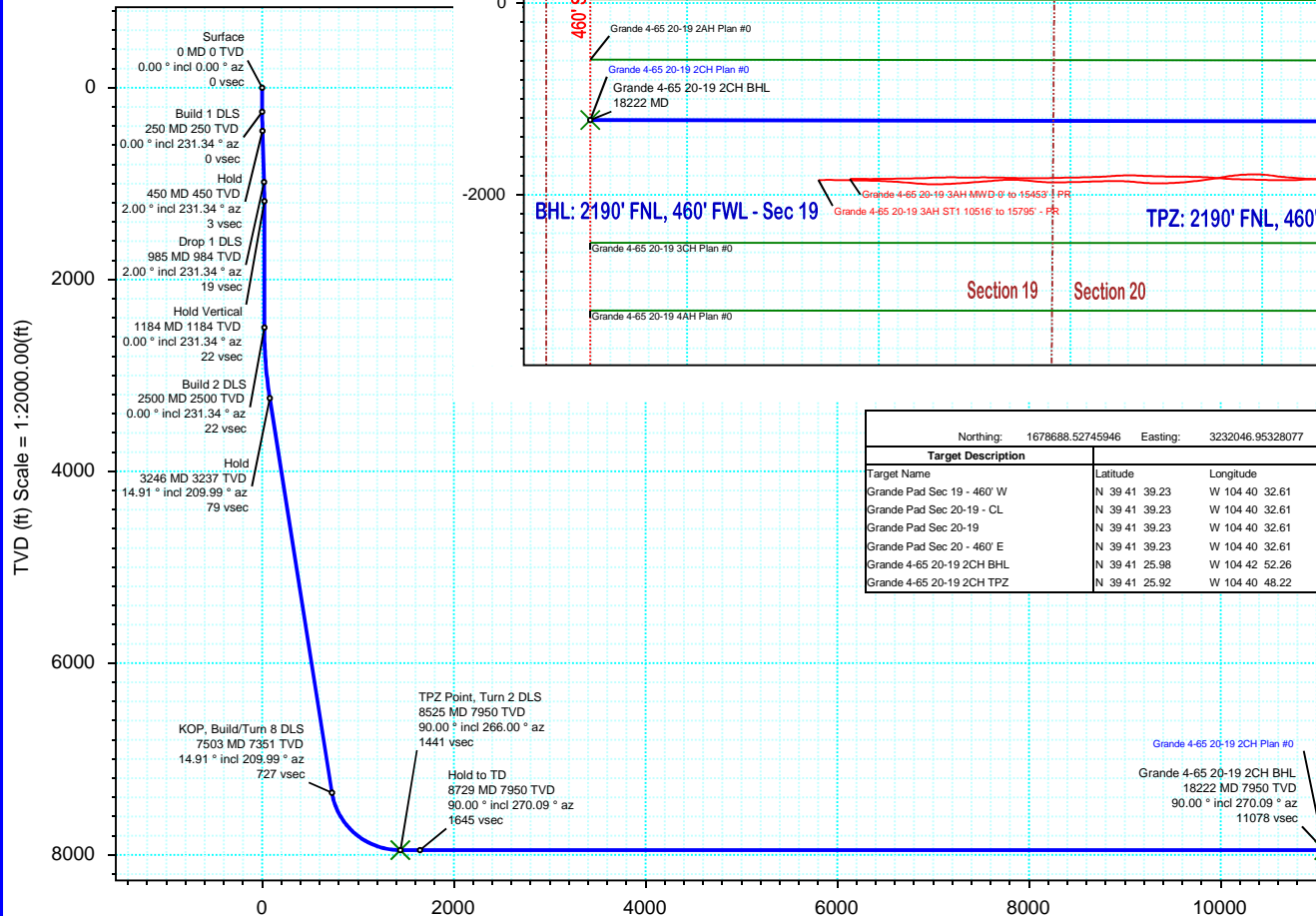
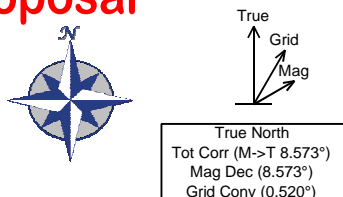
Plan 0

Borehole:	Well:	Field:	Structure:
Original Hole	Grande 4-65 20-19 2CH	CO, Arapahoe County (NAD 83 CZ)	Crestone Peak 21-04S-65W (Grande North Pad)

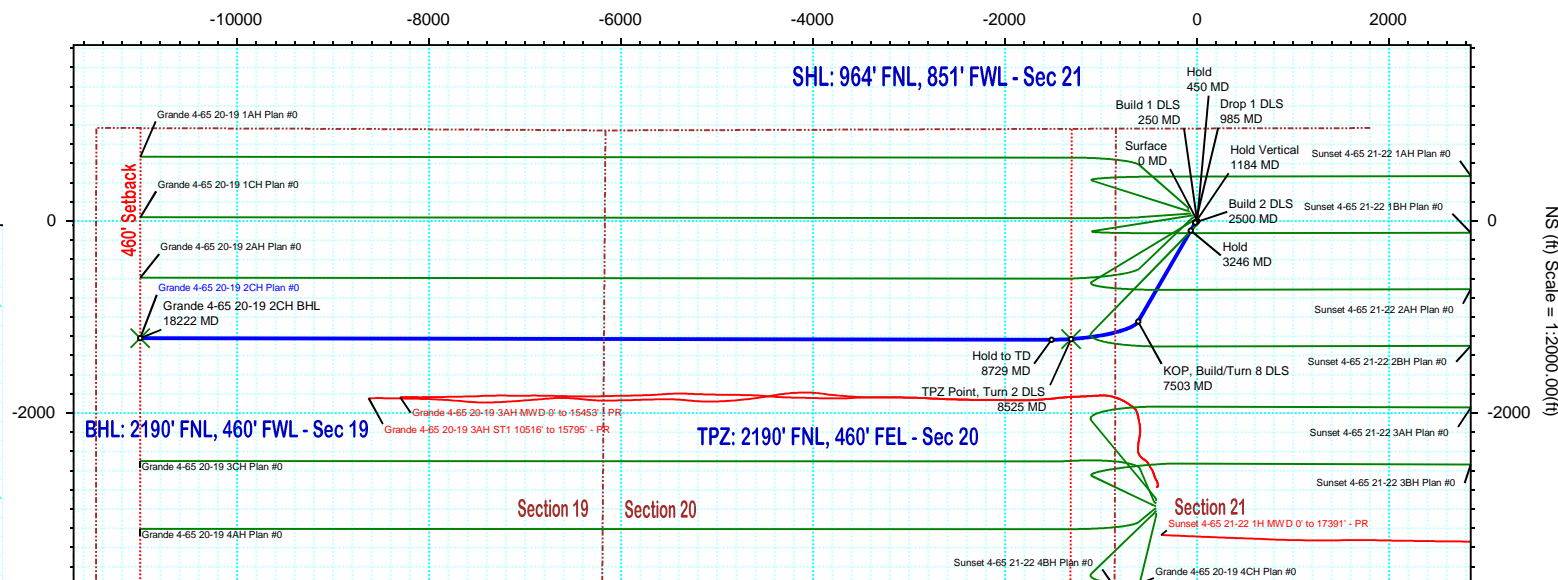
Gravity & Magnetic Parameters				Surface Location				Miscellaneous			
Model:	HDGM 2020	Dip:	66.336°	Date:	18-May-2020	Lat:	N 39 41 38.07	Northing:	1678688.53ftUS	Grid Conv:	0.5201°
MagDec:	8.573°	FS:	51550.035nT	Gravity FS:	998.911mgn (9.80665 Based)	Lon:	W 104 40 31.41	Easting:	3232046.95ftUS	Scale Fact:	0.99998939
								Slot:	Grande 4-65 20-19 2CH	TVD Ref:	KB 28ft(5691.3ft above MSL)
								Plan:	Grande 4-65 20-19 2CH Plan #0		

Proposal

EW (ft) Scale = 1:2000.00(ft)



Vertical Section (ft) Azim = 263.67° Scale = 1:2000.00(ft) Origin = 0N/-S, 0E/-W



Target Description		Surface Location		Grid Coord		Local Coord	
Northing: 1678688.52745946 Easting: 3232046.95328077		Latitude: N 39 41 38.07 Longitude: W 104 40 31.41		VSec Azimuth: 263.67			
Target Name	Latitude	Longitude	Northing	Easting	TVD	VSec	N(+)/S(-) E(+)/W(-)
Grande Pad Sec 19 - 460' W	N 39 41 39.23	W 104 40 32.61	1678804.97	3231952.75	5691.30	79.65	117.29 -93.15
Grande Pad Sec 20-19 - CL	N 39 41 39.23	W 104 40 32.61	1678804.97	3231952.75	5691.30	79.65	117.29 -93.15
Grande Pad Sec 20-19	N 39 41 39.23	W 104 40 32.61	1678804.97	3231952.75	5691.30	79.65	117.29 -93.15
Grande Pad Sec 20 - 460' E	N 39 41 39.23	W 104 40 32.61	1678804.97	3231952.75	5691.30	79.65	117.29 -93.15
Grande 4-65 20-19 2CH BHL	N 39 41 25.98	W 104 42 52.26	1677367.45	3221047.92	7950.00	11078.23	-1221.20 -11010.71
Grande 4-65 20-19 2CH TPZ	N 39 41 25.92	W 104 40 48.22	1677447.30	3230744.78	7950.00	1440.92	-1229.37 -1313.41

Critical Points								
Critical Point	MD	INCL	AZIM	TVD	VSEC	N(+)/S(-)	E(+)/W(-)	DLS
Surface	0.00	0.00	0.00	0.00	0.00	0.00	0.00	
Build 1 DLS	250.00	0.00	231.34	250.00	0.00	0.00	0.00	0.00
Hold	449.80	2.00	231.34	449.76	2.94	-2.18	-2.72	1.00
Drop 1 DLS	984.61	2.00	231.34	984.24	18.70	-13.82	-17.28	0.00
Hold Vertical	1184.41	0.00	231.34	1184.00	21.64	-16.00	-20.00	1.00
Build 2 DLS	2500.41	0.00	231.34	2500.00	21.64	-16.00	-20.00	0.00
Hold	3245.72	14.91	209.99	3236.93	78.74	-99.50	-68.19	2.00
KOP, Build/Turn 8 DLS	7503.27	14.91	209.99	7351.21	727.38	-1048.09	-615.60	0.00
TPZ Point, Turn 2 DLS	8524.92	90.00	266.00	7950.00	1440.92	-1229.37	-1313.41	8.00
Hold to TD	8729.49	90.00	270.09	7950.00	1644.85	-1236.34	-1517.81	2.00
Grande 4-65 20-19 2CH BHL	18222.40	90.00	270.09	7950.00	11078.23	-1221.20	-11010.71	0.00