



# Crestone Peak Resources

Schlumberger

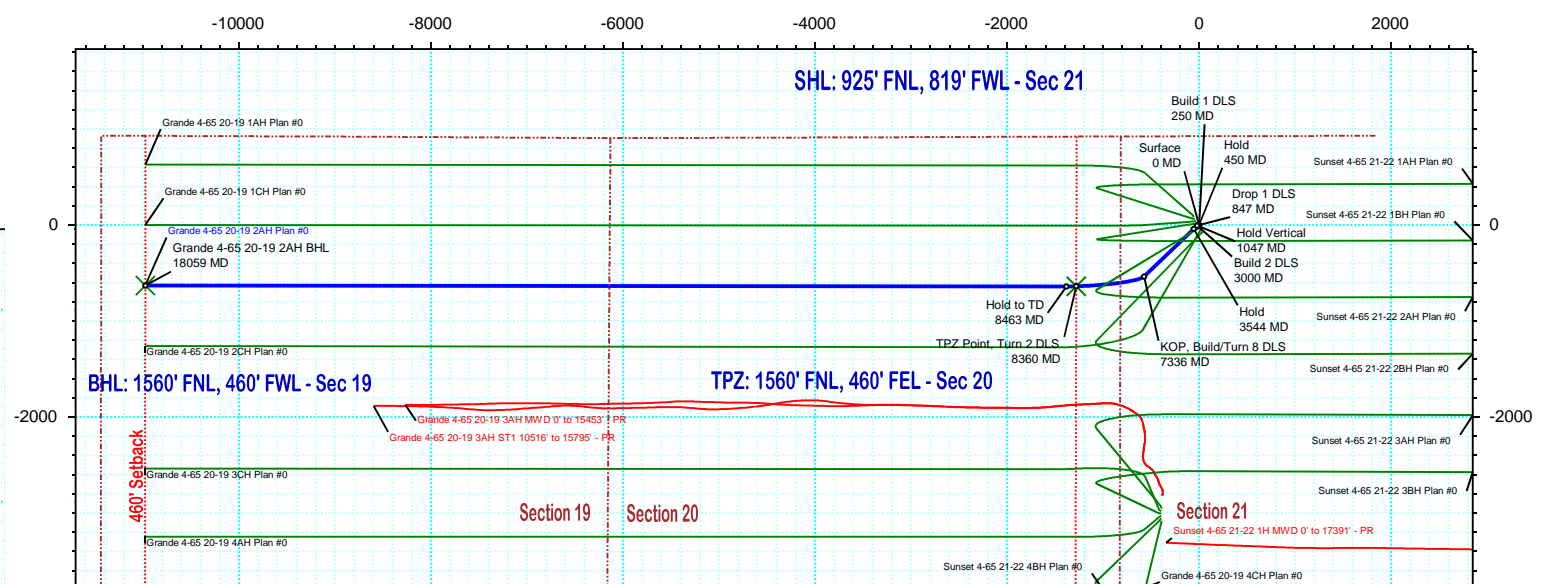
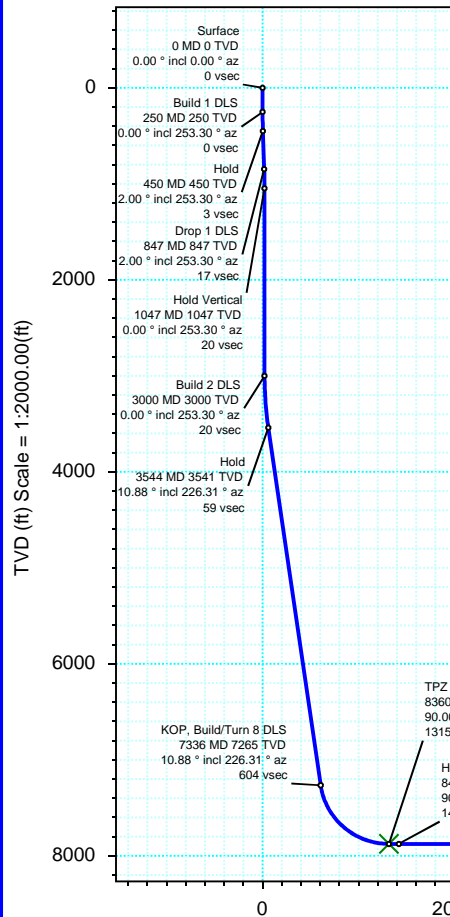
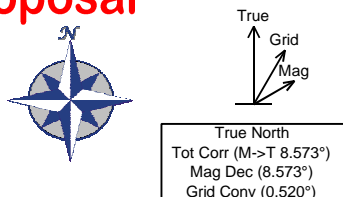
Plan 0

Borehole:	Well:	Field:	Structure:
Original Hole	Grande 4-65 20-19 2AH	CO, Arapahoe County (NAD 83 CZ)	Crestone Peak 21-04S-65W (Grande North Pad)

Gravity & Magnetic Parameters				Surface Location				Miscellaneous			
Model:	HDGM 2020	Dip:	66.336°	Date:	18-May-2020	Lat:	N 39 41 38.46	Northing:	1678727.22ftUS	Grid Conv:	0.52°
MagDec:	8.573°	FS:	51549.87nT	Gravity FS:	998.911mgn (9.80665 Based)	Lon:	W 104 40 31.81	Easting:	3232015.36ftUS	Scale Fact:	0.9999894
								Slot:	Grande 4-65 20-19 2AH	TVD Ref:	KB 28ft(5689.5ft above MSL)
								Plan:	Grande 4-65 20-19 2AH Plan #0		

Proposal

EW (ft) Scale = 1:2000.00(ft)



Target Description		Surface Location		Grid Coord		Local Coord	
Northing: 1678727.21848739 Easting: 3232015.36466401		Latitude: N 39 41 38.46 Longitude: W 104 40 31.81		VSec Azimuth: 266.71			
Target Name	Latitude	Longitude	Northing	Easting	TVD	VSec	N(+)/S(-) E(+)/W(-)
Grande Pad Sec 19 - 460' W	N 39 41 39.23	W 104 40 32.61	1678804.97	3231952.75	5689.50	57.32	78.32 -61.91
Grande Pad Sec 20-19 - CL	N 39 41 39.23	W 104 40 32.61	1678804.97	3231952.75	5689.50	57.32	78.32 -61.91
Grande Pad Sec 20-19	N 39 41 39.23	W 104 40 32.61	1678804.97	3231952.75	5689.50	57.32	78.32 -61.91
Grande Pad Sec 20 - 460' E	N 39 41 39.23	W 104 40 32.61	1678804.97	3231952.75	5689.50	57.32	78.32 -61.91
Grande 4-65 20-19 2AH TPZ	N 39 41 32.15	W 104 40 48.19	1678077.10	3230740.78	7875.00	1314.94	-638.53 -1280.45
Grande 4-65 20-19 2AH BHL	N 39 41 32.20	W 104 42 52.26	1677997.24	3221042.75	7875.00	10997.00	-630.38 -10978.92

Critical Points								
Critical Point	MD	INCL	AZIM	TVD	VSEC	N(+)/S(-)	E(+)/W(-)	DLS
Surface	0.00	0.00	0.00	0.00	0.00	0.00	0.00	
Build 1 DLS	250.00	0.00	253.30	250.00	0.00	0.00	0.00	0.00
Hold	450.49	2.00	253.30	450.44	3.41	-1.01	-3.36	1.00
Drop 1 DLS	846.84	2.00	253.30	846.56	16.90	-4.99	-16.64	0.00
Hold Vertical	1047.32	0.00	253.30	1047.00	20.31	-6.00	-20.00	1.00
Build 2 DLS	3000.32	0.00	253.30	3000.00	20.31	-6.00	-20.00	0.00
Hold	3544.11	10.88	226.31	3540.52	59.49	-41.55	-57.20	2.00
KOP, Build/Turn 8 DLS	7336.37	10.88	226.31	7264.67	604.32	-535.83	-574.55	0.00
TPZ Point, Turn 2 DLS	8360.13	90.00	268.00	7875.00	1314.94	-638.53	-1280.45	8.00
Hold to TD	8463.08	90.00	270.06	7875.00	1417.81	-640.27	-1383.38	2.00
Grande 4-65 20-19 2AH BHL	18058.63	90.00	270.06	7875.00	10997.00	-630.38	-10978.92	0.00

Vertical Section (ft) Azim = 266.71° Scale = 1:2000.00(ft) Origin = 0N/-S, 0E/-W