



Crestone Peak Resources

Schlumberger

Plan 0

Borehole:	Well:	Field:	Structure:
Original Hole	Grande 4-65 20-19 1CH	CO, Arapahoe County (NAD 83 CZ)	Crestone Peak 21-04S-65W (Grande North Pad)

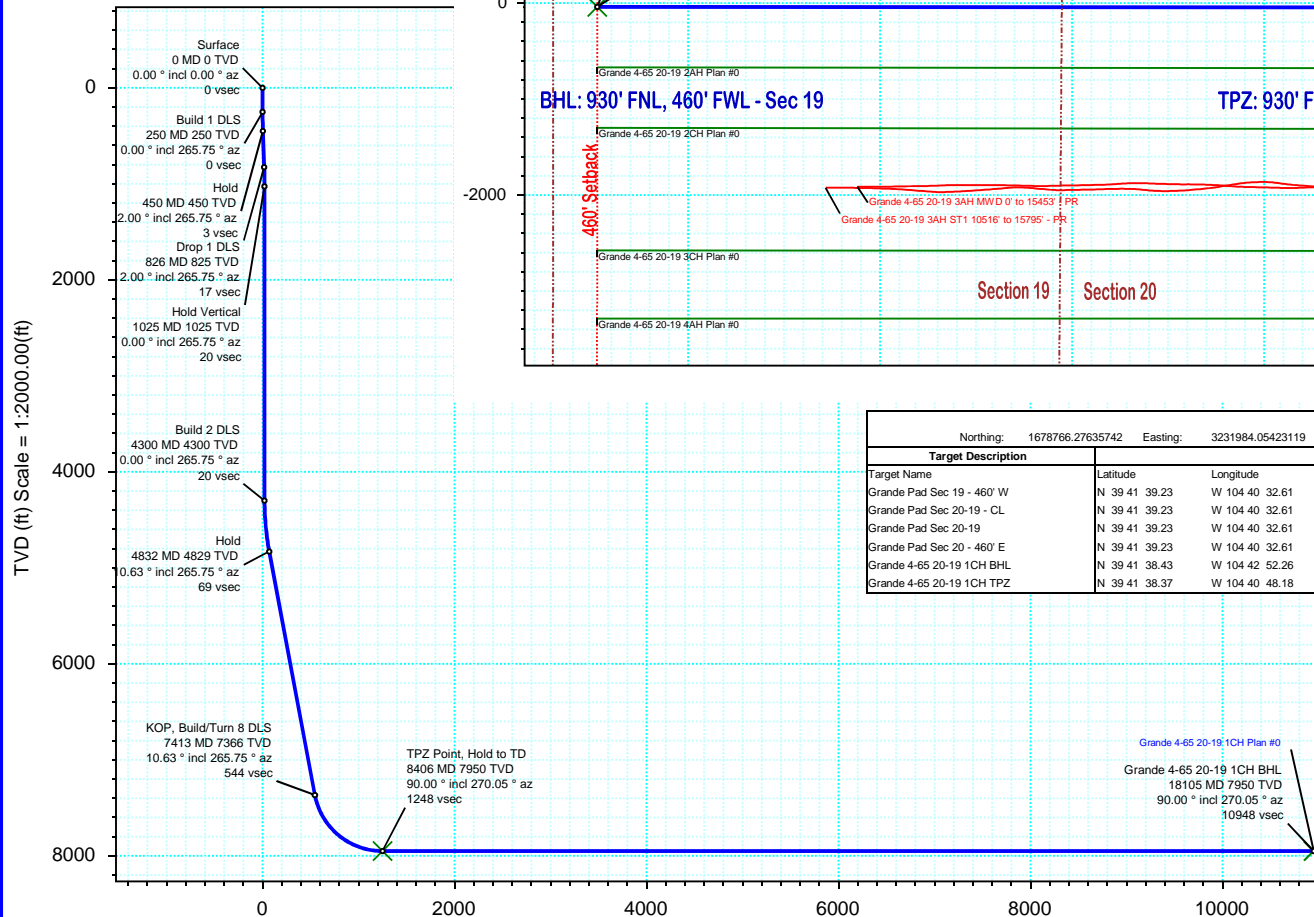
Gravity & Magnetic Parameters				Surface Location				Miscellaneous			
Model:	HDGM 2020	Dip:	66.336°	Date:	18-May-2020	Lat:	N 39 41 38.85	Northing:	1678766.28ftUS	Grid Conv:	0.5199°
MagDec:	8.573°	FS:	51549.703nT	Gravity FS:	998.912mgn (9.80665 Based)	Lon:	W 104 40 32.21	Easting:	3231984.05ftUS	Scale Fact:	0.99998942
								Slot: Grande 4-65 20-19 1CH			
								TVD Ref: KB 28ft(5688.2ft above MSL)			
								Plan: Grande 4-65 20-19 1CH Plan #0			

Proposal

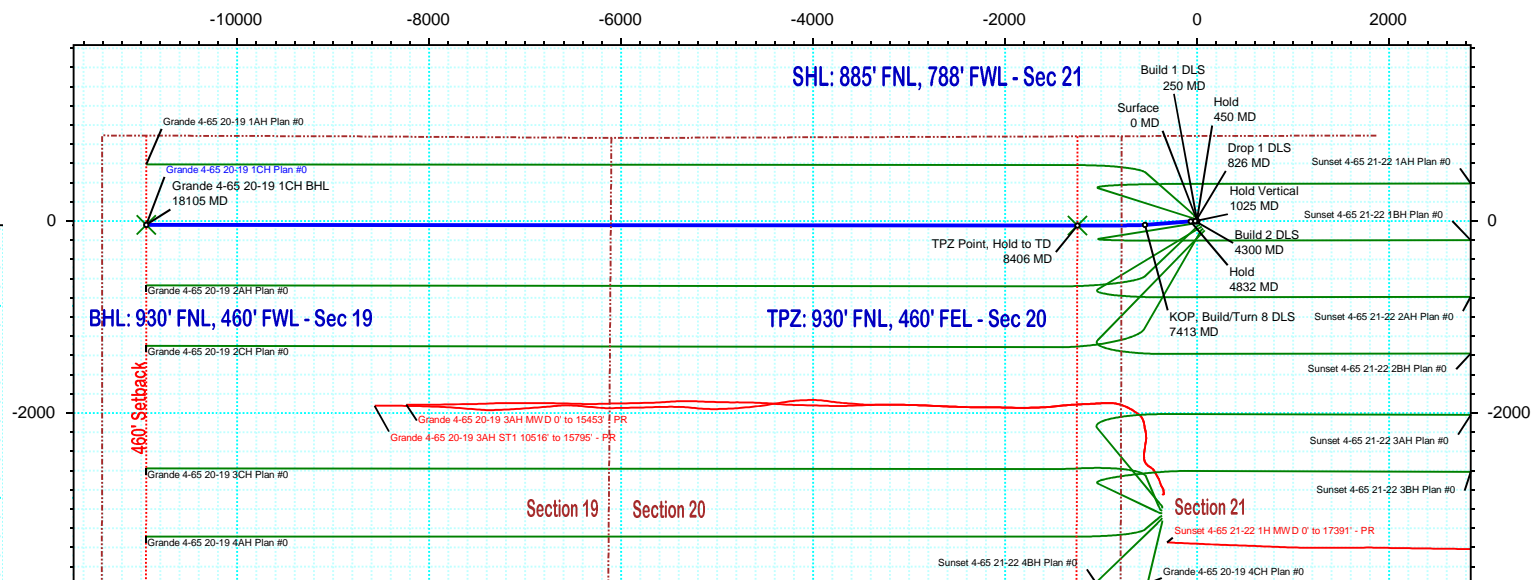
EW (ft) Scale = 1:2000.00(ft)



True North
Tot Corr (M->T 8.573°)
Mag Dec (8.573°)
Grid Conv (0.520°)



Vertical Section (ft) Azim = 269.79° Scale = 1:2000.00(ft) Origin = 0N/-S, 0E/-W



NS (ft) Scale = 1:2000.00(ft)

				Surface Location					
Northing: 1678766.27635742		Easting: 3231984.05423119		Latitude: N 39 41 38.85		Longitude: W 104 40 32.21		VSec Azimuth: 269.79	
Target Description		Grid Coord				Local Coord			
Target Name	Latitude	Longitude	Northing	Easting	TVD	VSec	N(+)/S(-)	E(+)/W(-)	
Grande Pad Sec 19 - 460' W	N 39 41 39.23	W 104 40 32.61	1678804.97	3231952.75	5688.20	30.81	38.98	-30.96	
Grande Pad Sec 20-19 - CL	N 39 41 39.23	W 104 40 32.61	1678804.97	3231952.75	5688.20	30.81	38.98	-30.95	
Grande Pad Sec 20-19	N 39 41 39.23	W 104 40 32.61	1678804.97	3231952.75	5688.20	30.81	38.98	-30.95	
Grande Pad Sec 20 - 460' E	N 39 41 39.23	W 104 40 32.61	1678804.97	3231952.75	5688.20	30.81	38.98	-30.96	
Grande 4-65 20-19 1CH BHL	N 39 41 38.43	W 104 42 52.26	1678627.03	3221037.31	7950.00	10947.77	-39.91	-10947.70	
Grande 4-65 20-19 1CH TPZ	N 39 41 38.37	W 104 40 48.18	1678706.90	3230736.50	7950.00	1248.22	-48.05	-1248.05	

Critical Points									
Critical Point	MD	INCL	AZIM	TVD	VSEC	N(+)/S(-)	E(+)/W(-)	DLS	
Surface	0.00	0.00	0.00	0.00	0.00	0.00	0.00		
Build 1 DLS	250.00	0.00	265.75	250.00	0.00	0.00	0.00	0.00	
Hold	449.64	2.00	265.75	449.60	3.47	-0.26	-3.47	1.00	
Drop 1 DLS	825.67	2.00	265.75	825.40	16.54	-1.23	-16.53	0.00	
Hold Vertical	1025.31	0.00	265.75	1025.00	20.01	-1.49	-20.00	1.00	
Build 2 DLS	4300.31	0.00	265.75	4300.00	20.01	-1.49	-20.00	0.00	
Hold	4831.99	10.63	265.75	4828.63	69.08	-5.13	-69.06	2.00	
KOP, Build/Turn 8 DLS	7413.33	10.63	265.75	7365.65	544.22	-40.42	-544.08	0.00	
TPZ Point, Hold to TD	8405.79	90.00	270.05	7950.00	1248.22	-48.05	-1248.05	8.00	
Grande 4-65 20-19 1CH BHL	18105.44	90.00	270.05	7950.00	10947.77	-39.91	-10947.70	0.00	