



Crestone Peak Resources

Schlumberger

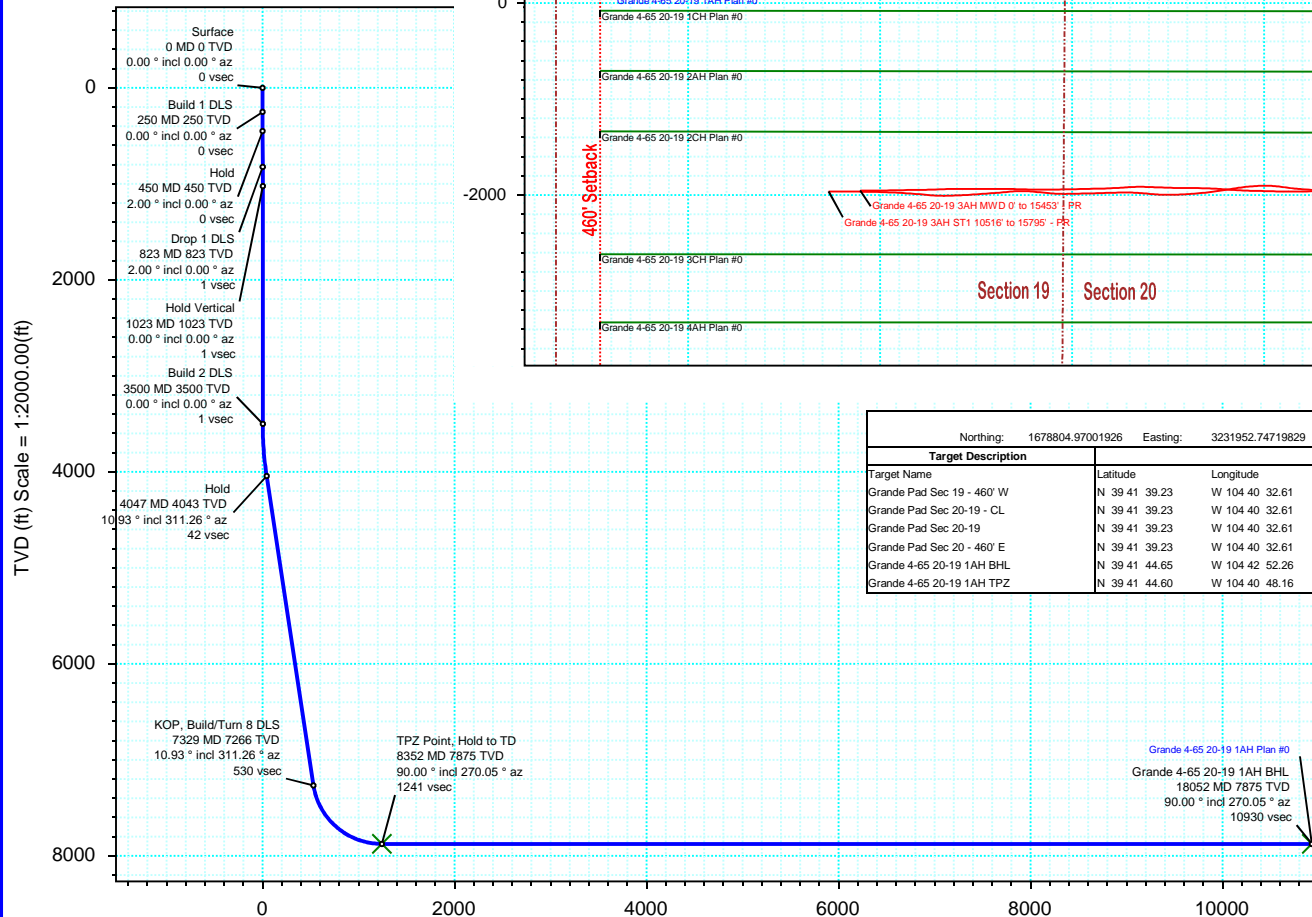
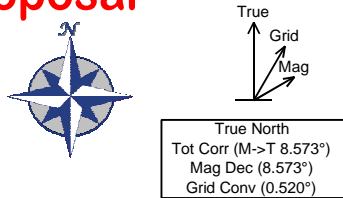
Plan 0

Borehole:	Well:	Field:	Structure:
Original Hole	Grande 4-65 20-19 1AH	CO, Arapahoe County (NAD 83 CZ)	Crestone Peak 21-04S-65W (Grande North Pad)

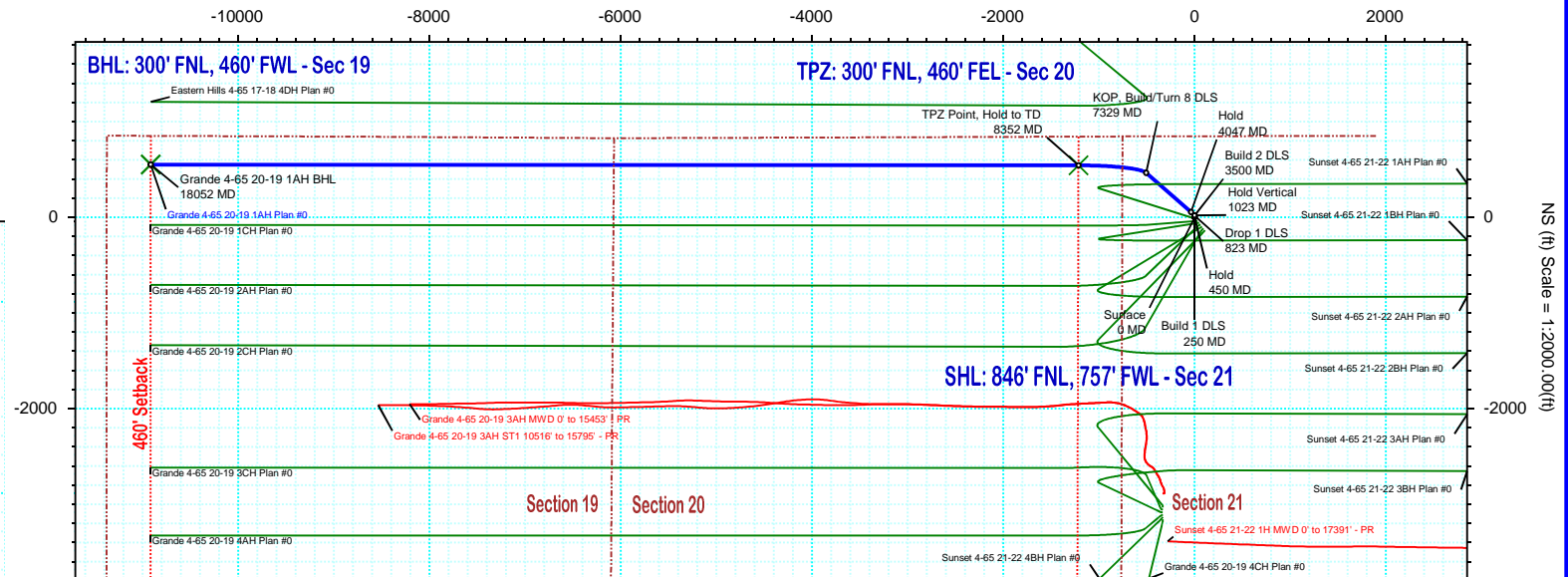
Gravity & Magnetic Parameters				Surface Location				Miscellaneous			
Model:	HDGM 2020	Dip:	66.336°	Date:	18-May-2020	Lat:	N 39 41 39.23	Northing:	1678804.97ftUS	Grid Conv:	0.5199°
MagDec:	8.573°	FS:	51549.536nT	Gravity FS:	998.912mgn (9.80665 Based)	Lon:	W 104 40 32.61	Easting:	3231952.75ftUS	Scale Fact:	0.99998944
								Slot: Grande 4-65 20-19 1AH			
								Plan: Grande 4-65 20-19 1AH Plan #0			

Proposal

EW (ft) Scale = 1:2000.00(ft)



Vertical Section (ft) Azim = 272.89° Scale = 1:2000.00(ft) Origin = 0N/-S, 0E/-W



Target Description		Surface Location		Grid Coord		Local Coord	
Target Name		Latitude	Longitude	Northing	Easting	TVD	VSec
Grande Pad Sec 19 - 460' W		N 39 41 39.23	W 104 40 32.61	1678804.97	3231952.75	5687.40	0.00
Grande Pad Sec 20-19 - CL		N 39 41 39.23	W 104 40 32.61	1678804.97	3231952.75	5687.40	0.00
Grande Pad Sec 20-19		N 39 41 39.23	W 104 40 32.61	1678804.97	3231952.75	5687.40	0.00
Grande Pad Sec 20 - 460' E		N 39 41 39.23	W 104 40 32.61	1678804.97	3231952.75	5687.40	0.00
Grande 4-65 20-19 1AH BHL		N 39 41 44.65	W 104 42 52.26	1679256.81	3221032.14	7875.00	10930.08
Grande 4-65 20-19 1AH TPZ		N 39 41 44.60	W 104 40 48.16	1679336.70	3230732.23	7875.00	1241.48

Critical Points							
Critical Point	MD	INCL	AZIM	TVD	VSEC	N(+)/S(-)	E(+)/W(-)
Surface	0.00	0.00	0.00	0.00	0.00	0.00	0.00
Build 1 DLS	250.00	0.00	0.00	250.00	0.00	0.00	0.00
Hold	449.86	2.00	0.00	449.82	0.18	3.49	0.00
Drop 1 DLS	823.44	2.00	0.00	823.18	0.83	16.51	0.00
Hold Vertical	1023.31	0.00	0.00	1023.00	1.01	20.00	0.00
Build 2 DLS	3500.31	0.00	0.00	3500.00	1.01	20.00	0.00
Hold	4046.78	10.93	311.26	4043.17	41.75	54.27	-39.06
KOP, Build/Turn 8 DLS	7329.01	10.93	311.26	7265.86	529.63	464.69	-506.85
TPZ Point, Hold to TD	8351.52	90.00	270.05	7875.00	1241.48	542.79	-1215.66
Grande 4-65 20-19 1AH BHL	18052.05	90.00	270.05	7875.00	10930.08	550.92	-10916.19