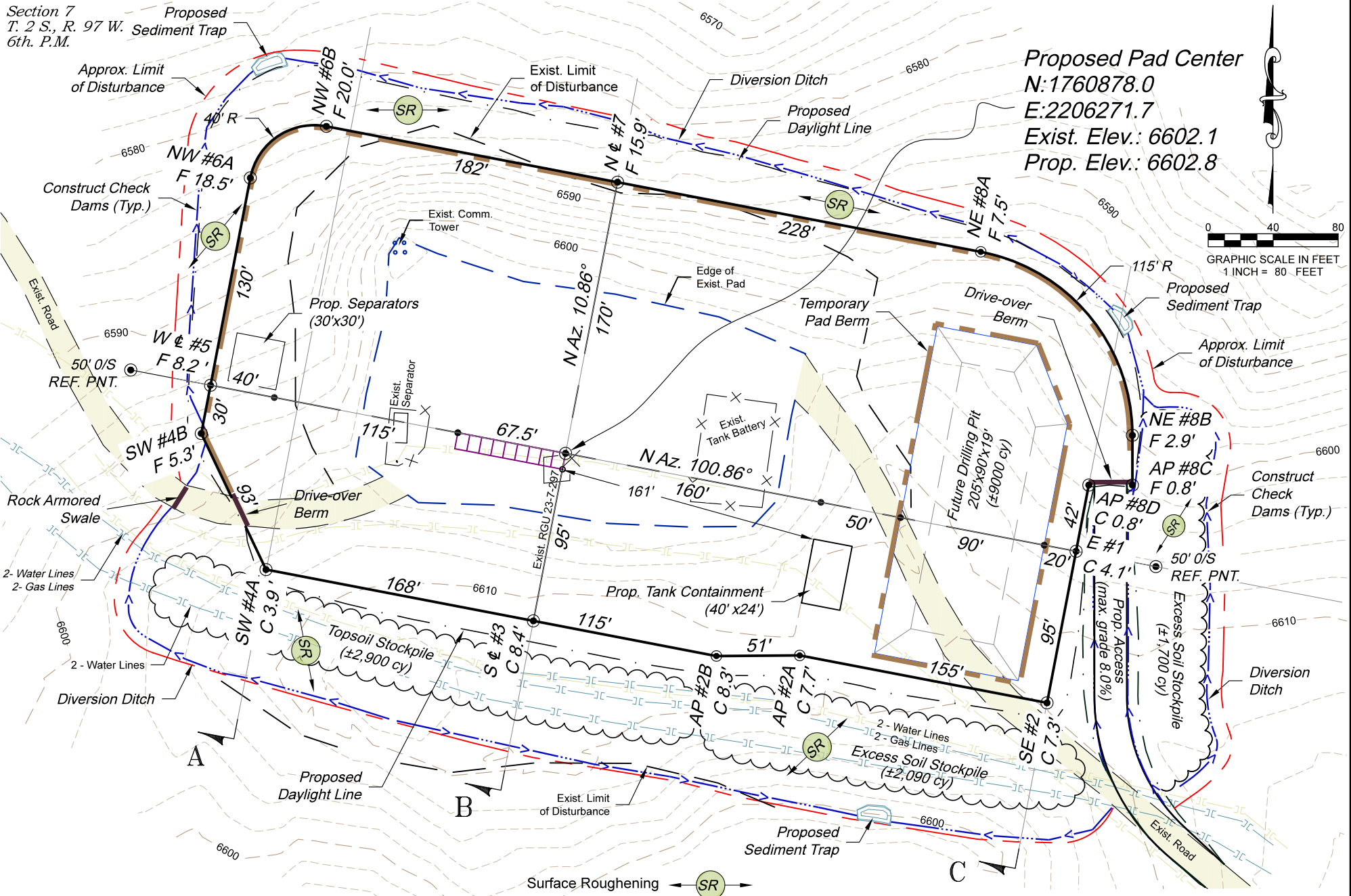


Section 7  
T. 2 S., R. 97 W. Sediment Trap  
6th. P.M.

Proposed Pad Center  
N:1760878.0  
E:2206271.7  
Exist. Elev.: 6602.1  
Prop. Elev.: 6602.8

0 40 80  
GRAPHIC SCALE IN FEET  
1 INCH = 80 FEET



REVISED: 6/17/20

SCALE: 1" = 80'  
DATE: 9/06/19  
SHEET: 1 of 5  
PROJECT: Highlands  
DFT: cs

Construction Plan Prepared for:



TEP Rocky Mountain LLC

RGU 23-7-297 Pad - Plat 1

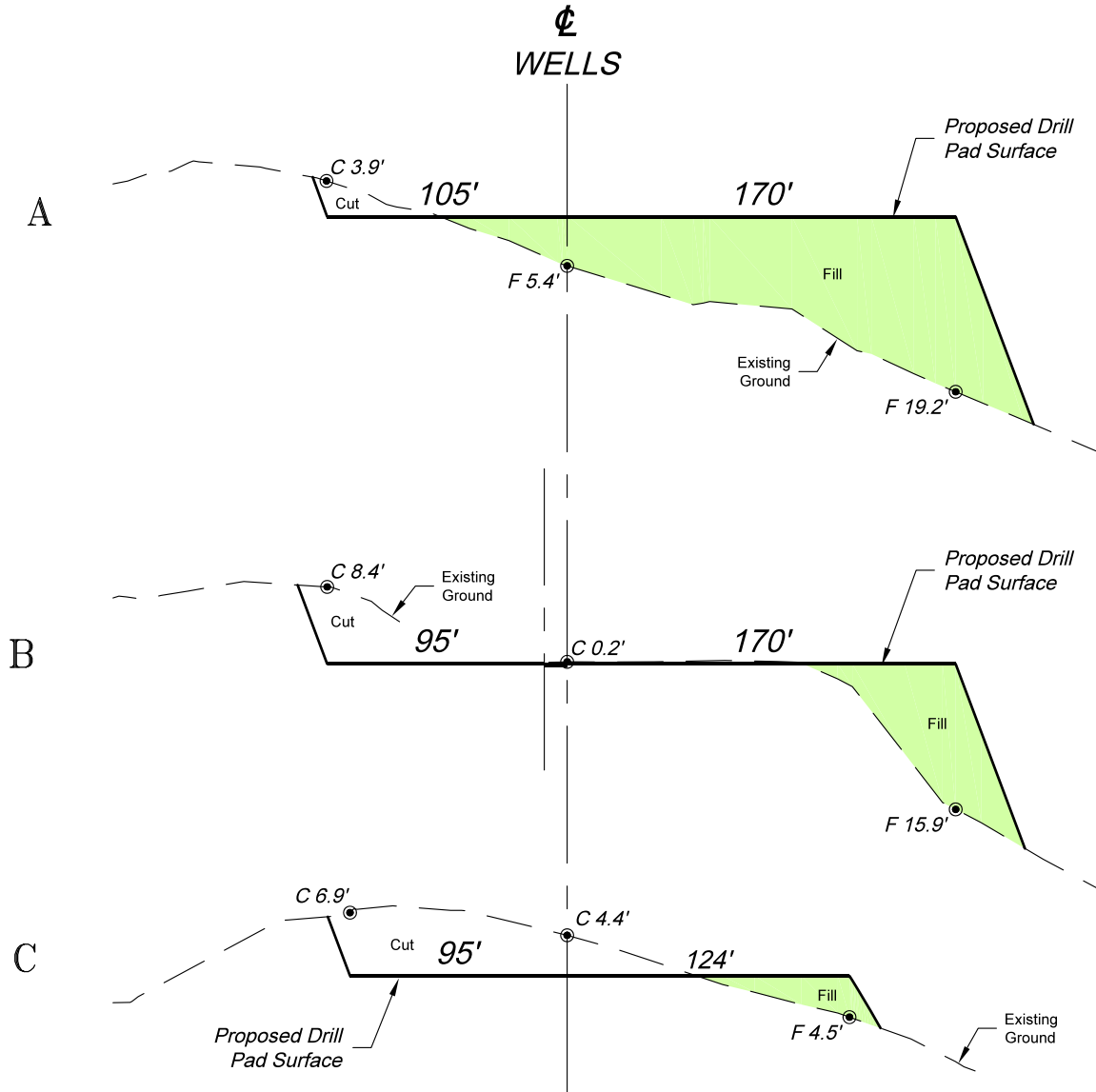
CONSTRUCTION LAYOUT

1436 East Third Street  
Rifle, Colorado 81650  
Ph. (970) 625-1330  
Fax (970) 625-2773





Section 7  
T. 2 S., R. 97 W.  
6th. P.M.



SCALE: Horiz.: 1" = 80'  
Vert. : 1" = 40'

Pad Surface Completion Volumes:  
6" Aggregate Base = ±2360 cy  
6" Shale Base = ±2360 cy

ESTIMATED EARTHWORK QUANTITIES (cy)				
ITEM	CUT	FILL	TOPSOIL	EXCESS
PAD	13,710	18,540	2,480	-7,310
PIT	10,670			10,670
ROAD	430	0	0	430
TOTALS	24,810	18,540	2,480	3,790

\*Construction Notes

- Design Cut Slope: 1.5:1  
Design Fill Slope: 1.5:1
- Access Road Cut Slope: 2:1  
Access Road Fill Slope: 2:1 Max. Grade 7.5.1%
- Topsoil based on 6" Soil Depth.
- 20% Swell Factor Applied to Earthwork Cut Volume.
- Total Pad Disturbance: 5.67 ac.  
Road Disturbance: 0.19 ac.

REVISED: 6/17/20

1±36 East Third  
Street Rifle, Colorado  
81650 Ph. (970)  
625-2720 Fax (970)  
625-277±3



SCALE: As Noted  
DATE: 9/06/19  
PLAT: 2 of 5  
PROJECT: Highlands  
DFT: cs

Construction Plan Prepared for:



TEP Rocky Mountain LLC

RGU 23-7-297 Pad - Plat 2  
CONSTRUCTION LAYOUT  
CROSS SECTIONS