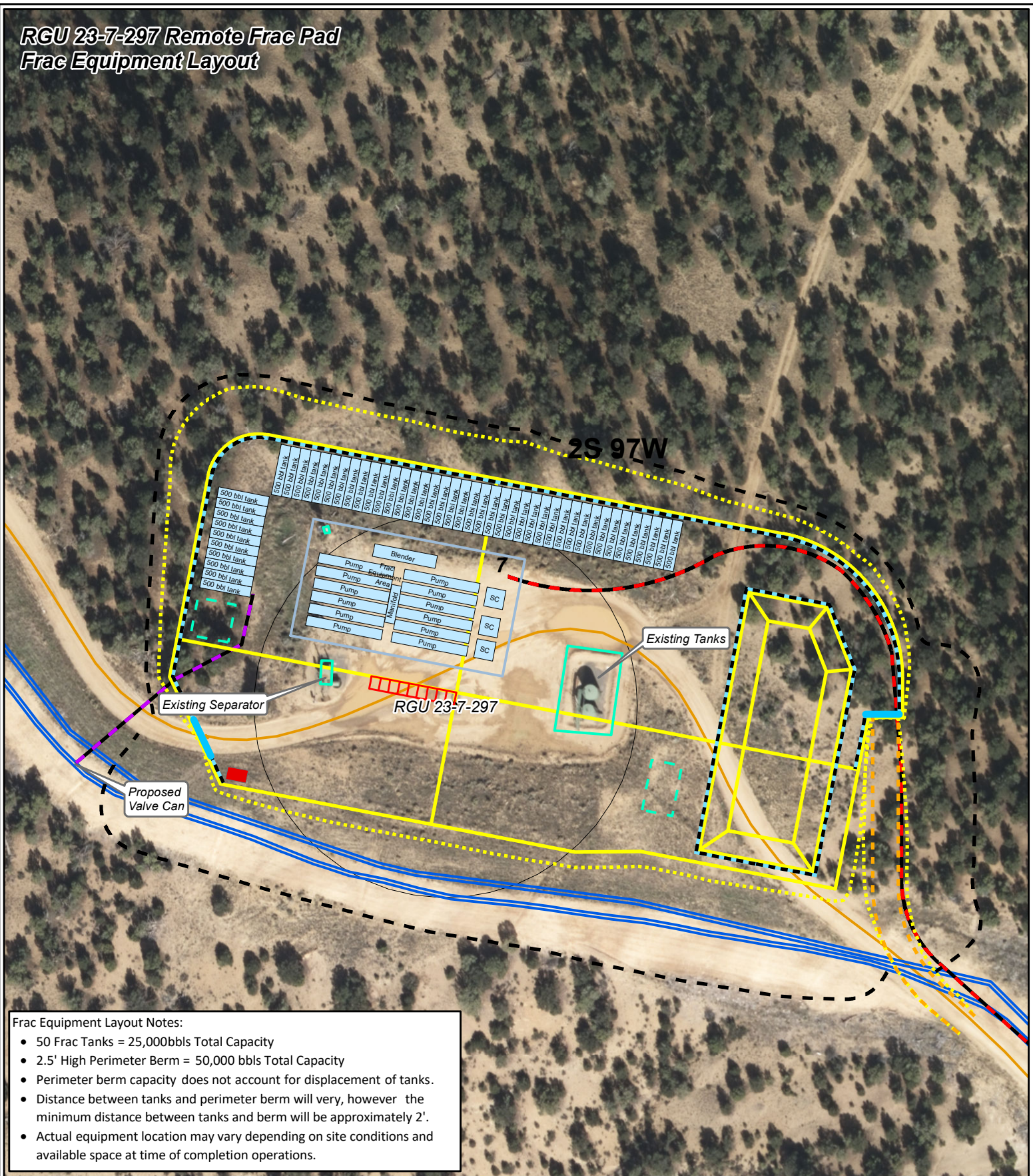


RGU 23-7-297 Remote Frac Pad Frac Equipment Layout



- Frac Equipment Layout Notes:**
- 50 Frac Tanks = 25,000bbls Total Capacity
 - 2.5' High Perimeter Berm = 50,000 bbls Total Capacity
 - Perimeter berm capacity does not account for displacement of tanks.
 - Distance between tanks and perimeter berm will vary, however the minimum distance between tanks and berm will be approximately 2'.
 - Actual equipment location may vary depending on site conditions and available space at time of completion operations.

Legend			
--- Proposed Berm (2.5' High)	--- Proposed Pad or Pit	--- Surface Water Supply Lines	
--- Drive Over Berm (2.5' High)	--- Proposed Daylight Line	--- Existing Water Pipeline	
--- Frac Equipment	--- Proposed Limit of Disturbance	--- Existing Road	
--- Frac Equipment Area	--- Proposed Production Equipment	--- Existing Pad	
--- Spill Response Trailer	--- Existing Production Equipment	--- Township Range Line	
--- Existing Well	--- Proposed Road	--- Section Line	
--- Proposed Cellar	--- Surface Frac Lines		