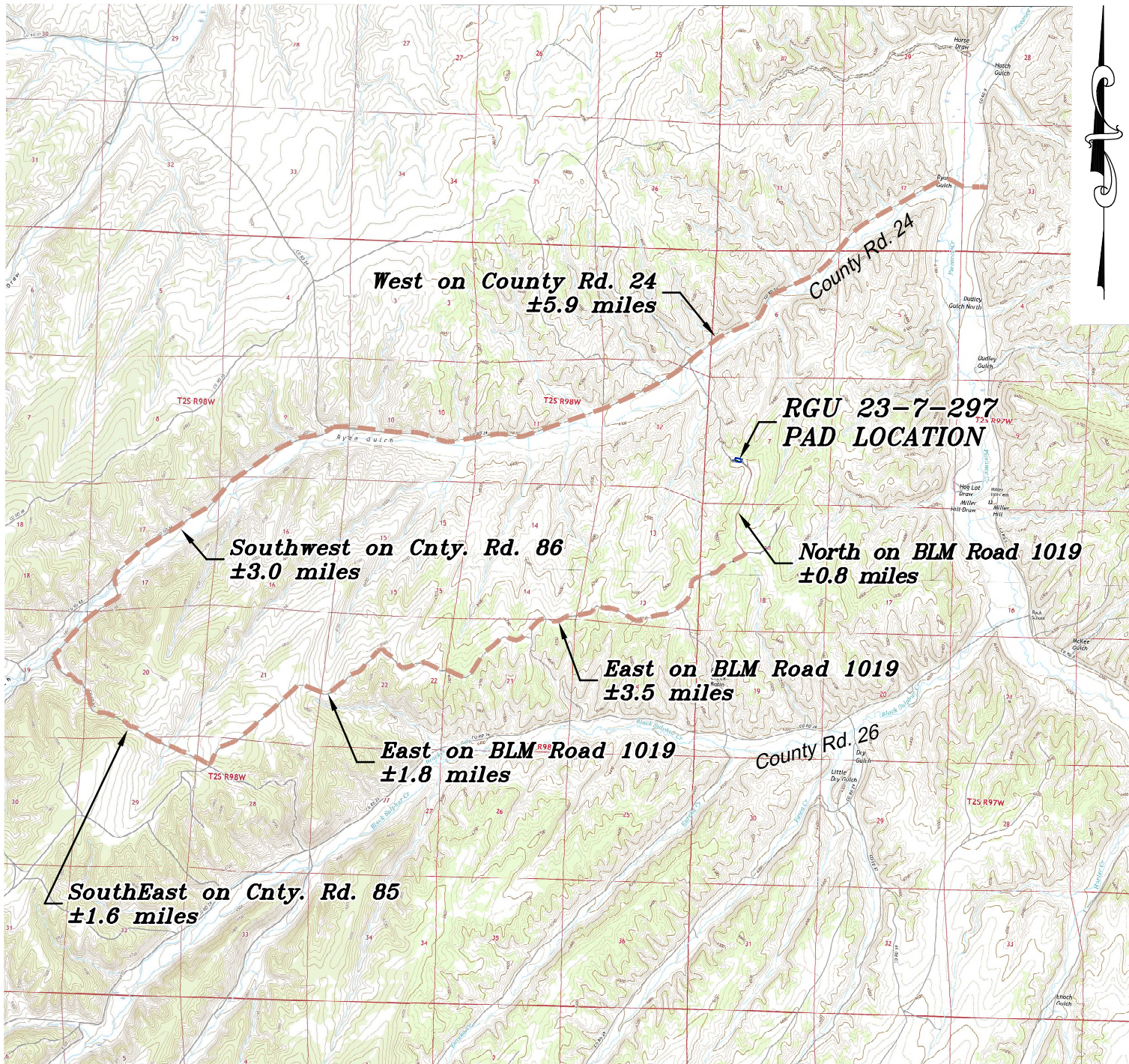
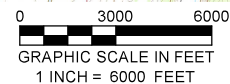


Section 7  
T. 2 S., R. 97 W.



Existing Road - - - - -



**ACCESS DESCRIPTION:**

FROM THE INTERSECTION OF STATE HIGHWAY 64 AND RIO BLANCO COUNTY ROAD 5 PROCEED SOUTHERLY ALONG COUNTY ROAD 5, ±14.5 MILES TO THE INTERSECTION WITH COUNTY ROAD 24 (Mile Marker 26.8), PROCEED WEST ALONG COUNTY ROAD 24, ±5.9 MILES TO THE INTERSECTION WITH COUNTY ROAD 86, PROCEED LEFT IN A SOUTHWEST DIRECTION ±3.0 MILES TO THE INTERSECTION WITH COUNTY ROAD 85, PROCEED LEFT IN A SOUTHEAST DIRECTION ±1.6 MILES TO THE INTERSECTION WITH BLM ROAD 1019, PROCEED LEFT IN AN EASTERLY DIRECTION ±1.8 ON BLM ROAD 1019 TO A THREE-WAY INTERSECTION, KEEP RIGHT IN AN EASTERLY DIRECTION ON BLM ROAD 1019 ±3.5 MILES TO A THREE-WAY INTERSECTION, KEEP LEFT ON BLM ROAD 1019 IN A NORTHERLY DIRECTION ±0.8 MILES TO THE EXISTING RGU 23-7-297 DRILL PAD LOCATION, AS SHOWN HEREON.

REVISED: 6/12/20

SCALE:	1" = 6000'
DATE:	9/10/19
PLAT:	3 of 5
PROJECT:	TEP Valley
DFT:	cs

Construction Plan Prepared for:

**TERRA** ENERGY PARTNERS TEP Rocky Mountain LLC

RGU 23-7-297 Pad - Plat 3  
ACCESS ROAD & TOPO MAP

136 East Third Street  
Rifle, Colorado 81650  
Ph. (970) 625-2720  
Fax (970) 625-2773



**BOOKCLIFF**  
Survey Services, Inc.