



CEMENT BOND LOG CCLV/DL GAMMA RAY

Pioneer Energy Services

Country USA

Company RENEGADE OIL & GAS
Well UPRR-MARRS #1-3
Field KITTY
County ADAMS
State COLORADO
Country USA

Location:

API # : 05-001-06566
NW-4, NW-4
SEC 3, T3S, R62W

Other Services

Permanent Datum SEC 3 TWP 3S RGE 62W

Elevation 5214'

Elevation

K.B. 5223'
D.F. 5222'
G.L. 5214'

Date 4/25/2014

Run Number 1

Depth Driller 7340'

Depth Logger 3200'

Bottom Logged Interval 3200'

Top Log Interval SURFACE

Open Hole Size 8.63"

Type Fluid WATER

Density / Viscosity 8.33

Max. Recorded Temp. NA

Estimated Cement Top NA

Time Well Ready 08:00

Time Logger on Bottom 08:30

Equipment Number 1

Location FORT MORGAN

Recorded By TIM REESE

Witnessed By ED INGVE

Borehole Record

Run Number Bit From To Size Weight From To

Size From To Size Weight From To

Weight From To

From To

To

Top

Bottom

760'

7434'

Casing Record

Surface String

Prot. String

Production String

Liner

Comments

THANKYOU FOR USING PIONEER ENERGY

Database File: uprr marrs 1-3.db
Dataset Pathname: pass4.7
Presentation Format: cbl_dr
Dataset Creation: Fri Apr 25 09:38:07 2014 by Calc 7.0 B1
Charted by: Depth in Feet scaled 1:240

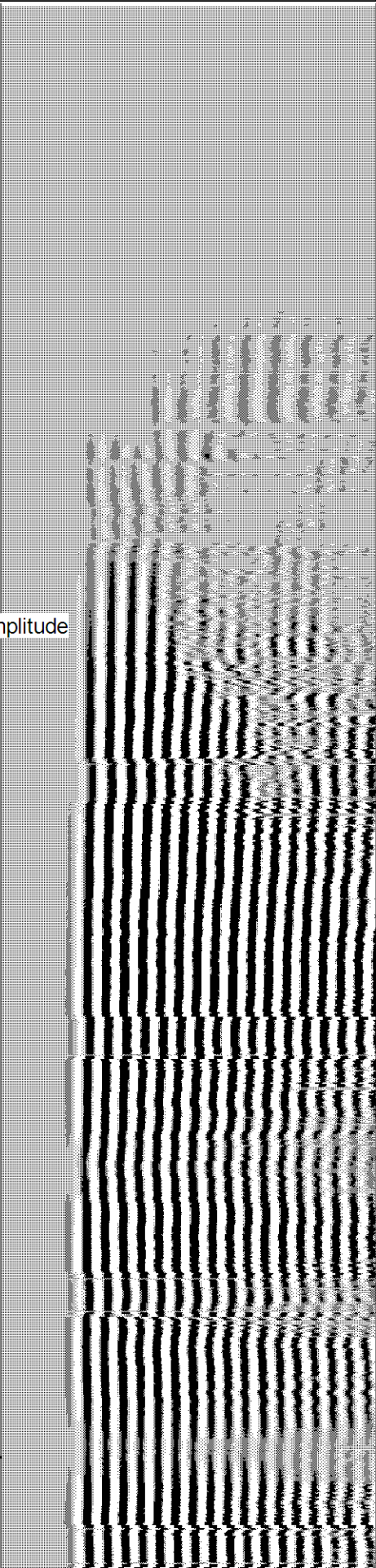
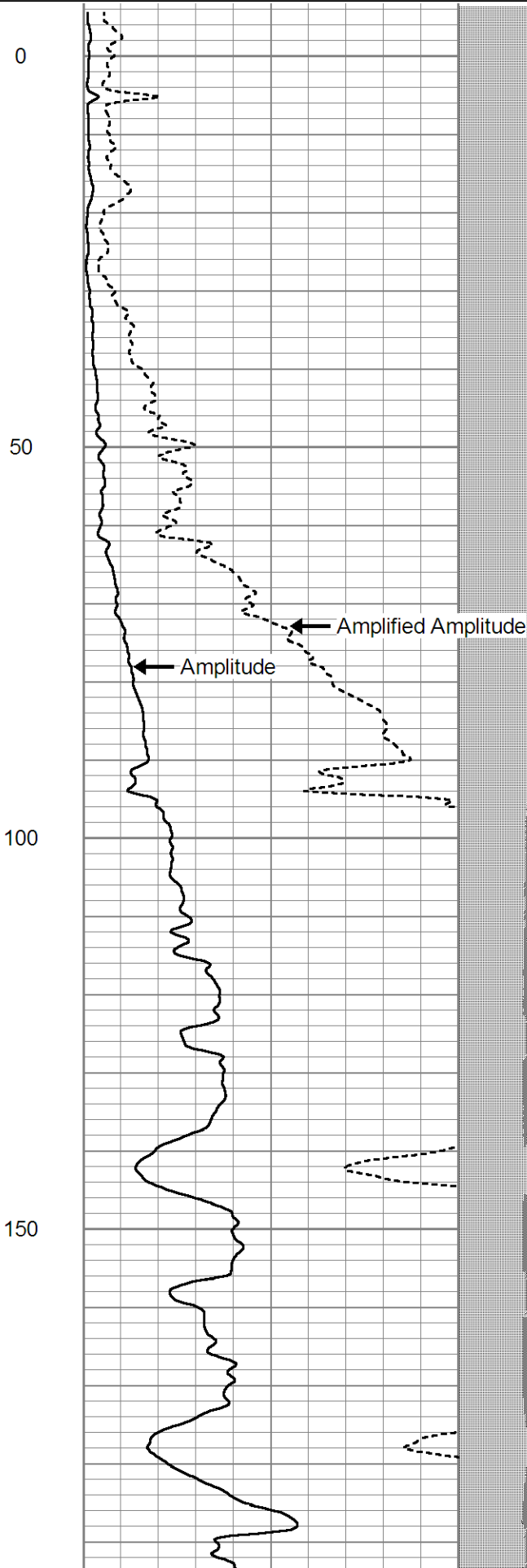
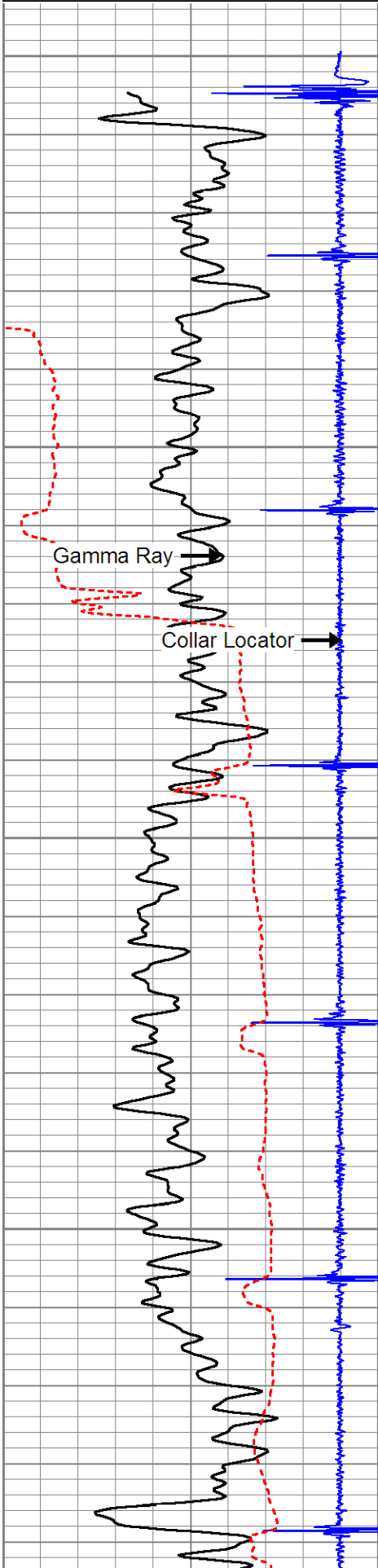
9	Collar Locator	-1
0	Gamma Ray (GAPI)	150
325	TT3 (usec)	225

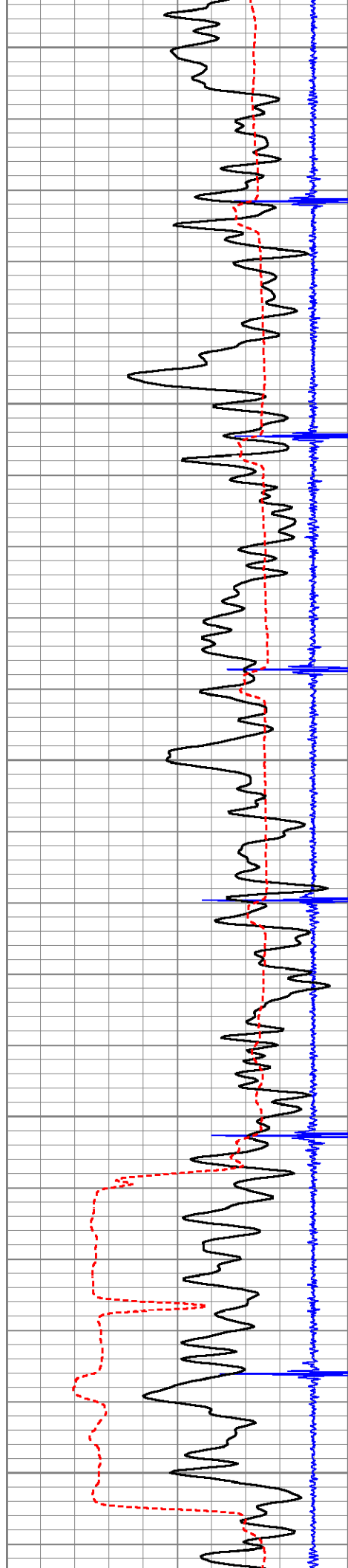
0	Amplified Amplitude (mV)	20
0	Amplitude (mV)	100

200

Variable Density

1200





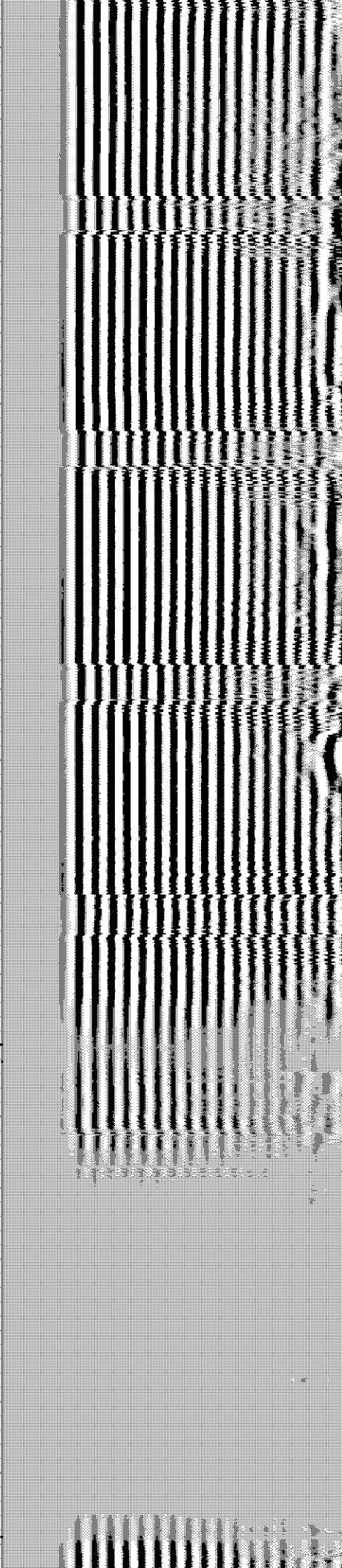
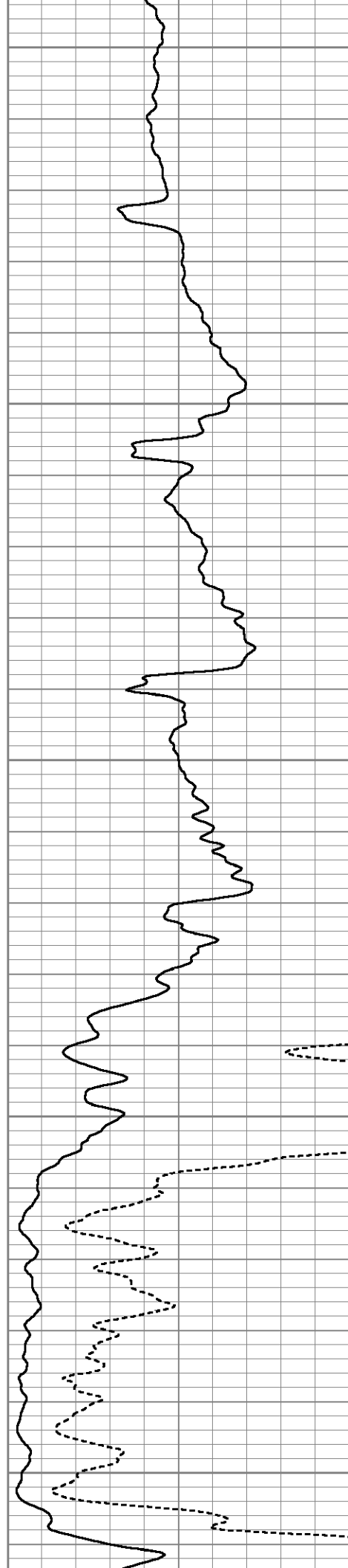
200

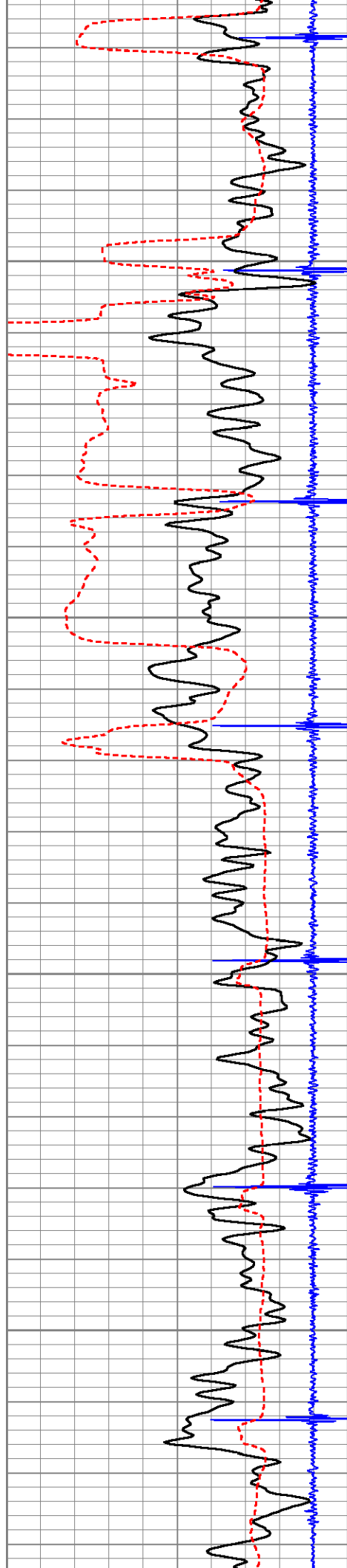
250

300

350

400



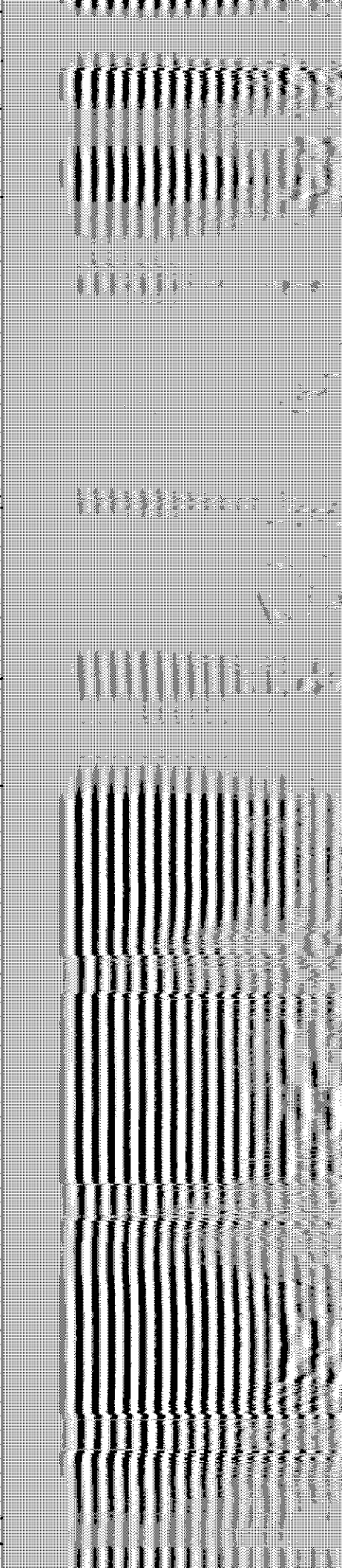
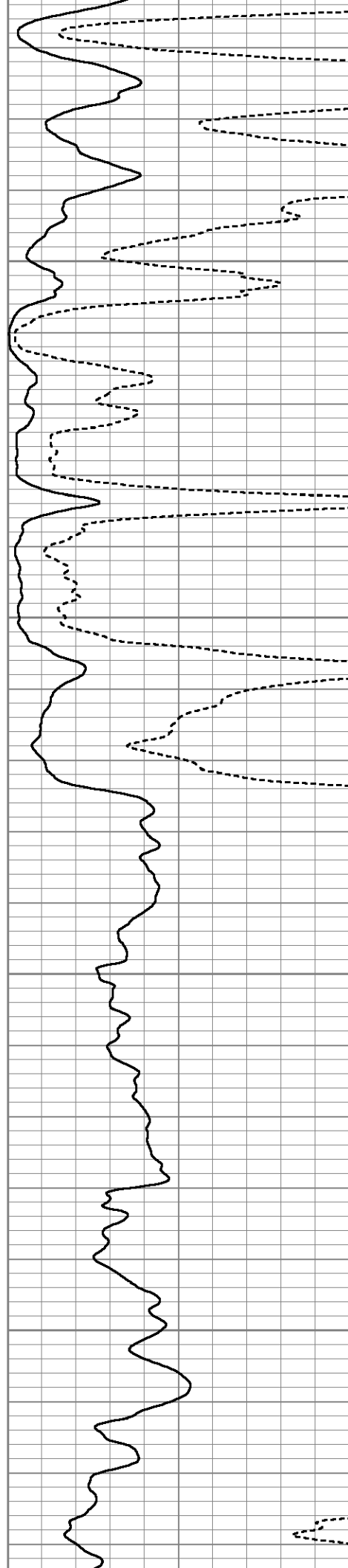


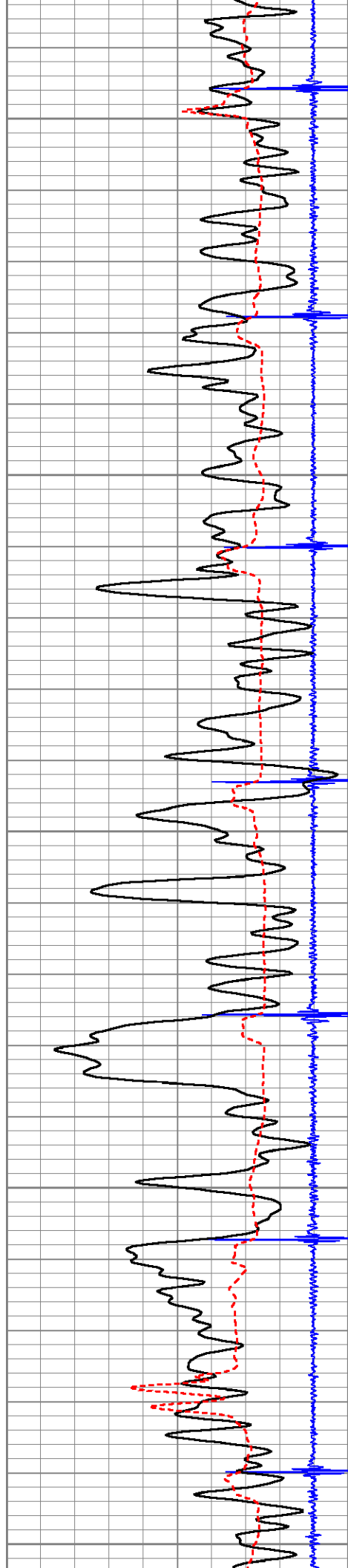
450

500

550

600





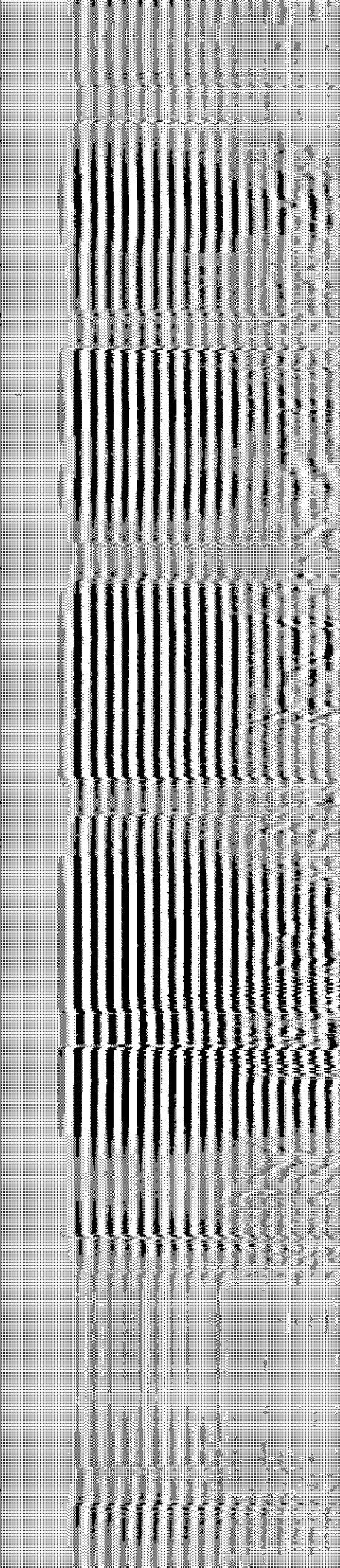
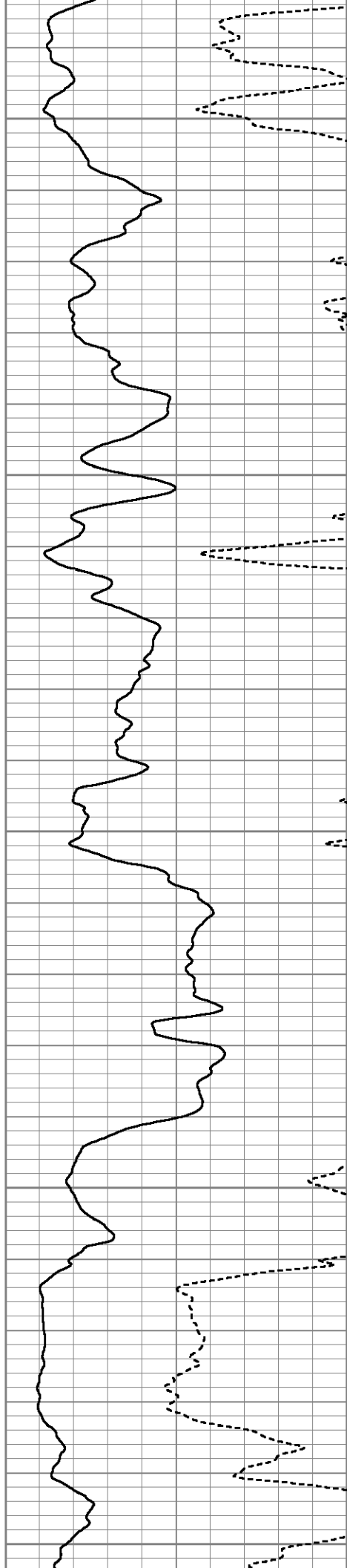
650

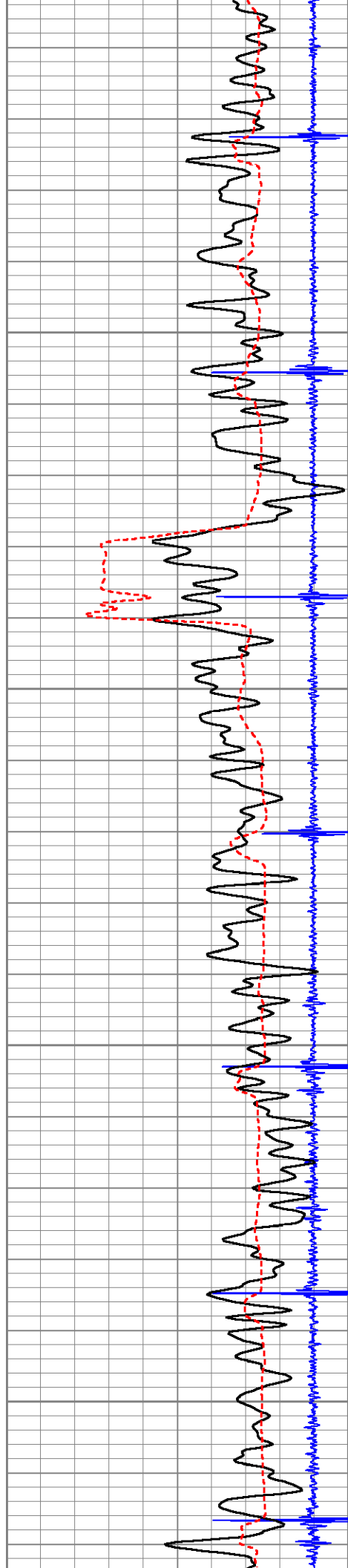
700

750

800

850



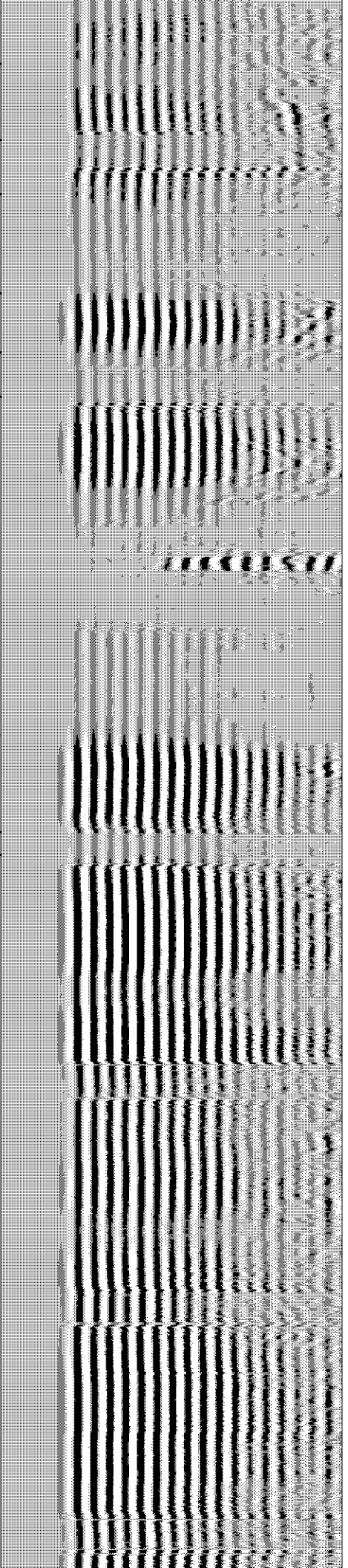
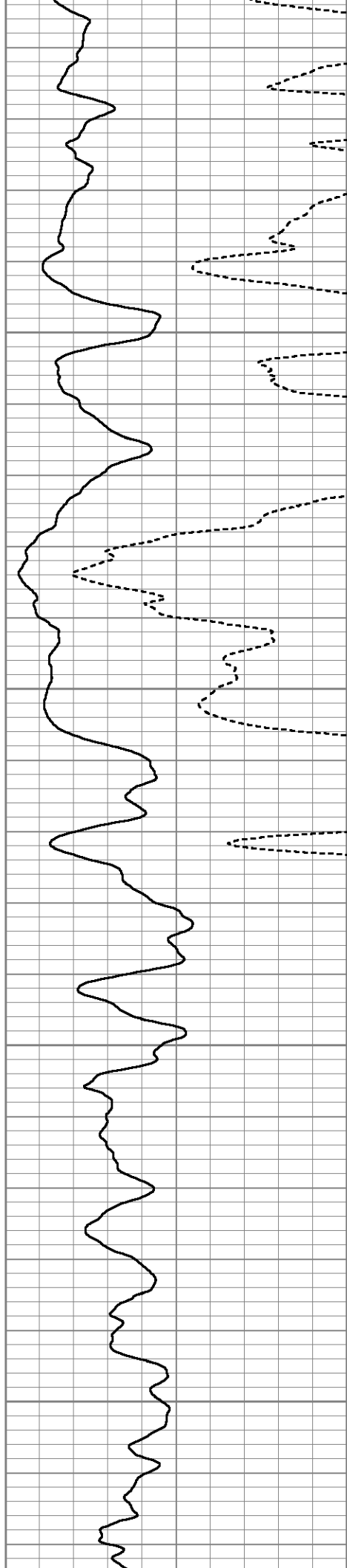


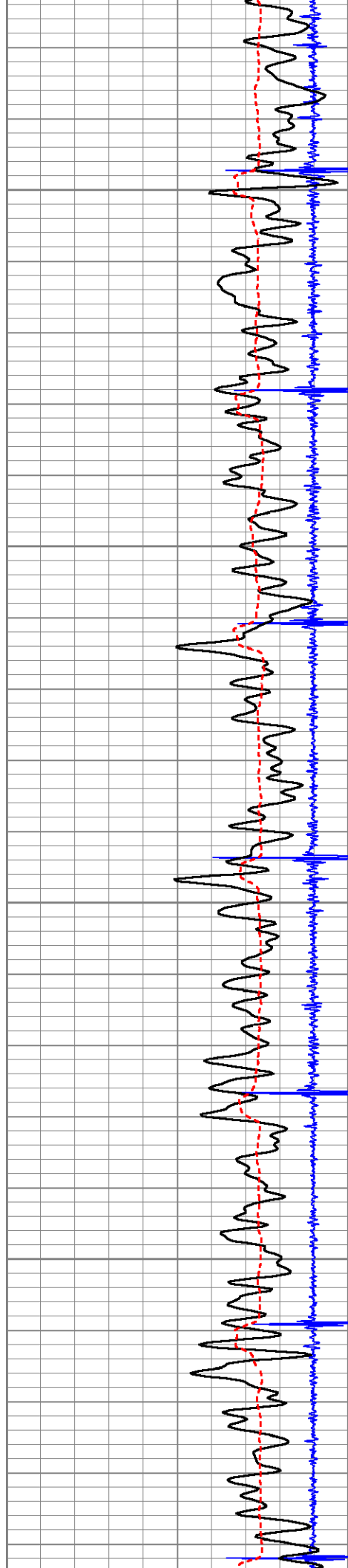
900

950

1000

1050



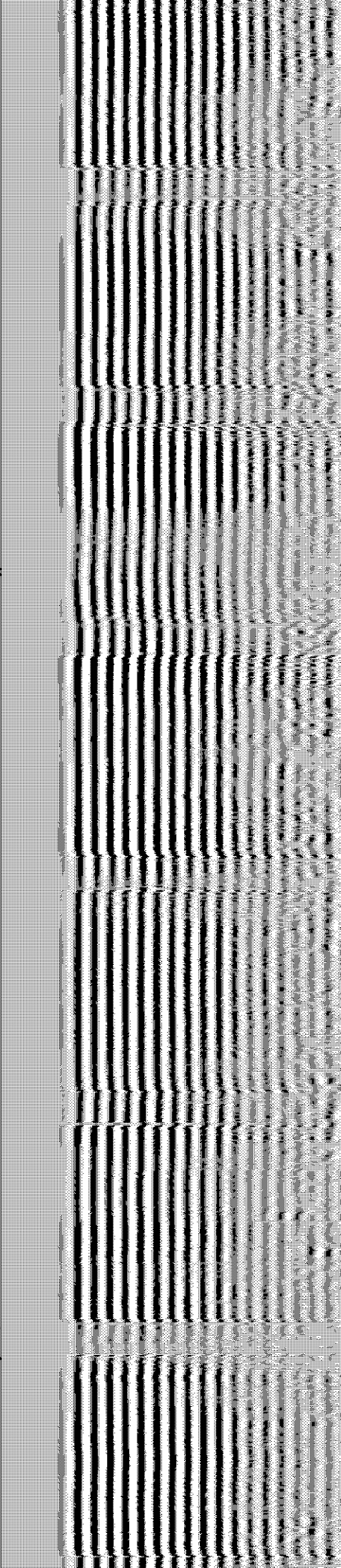
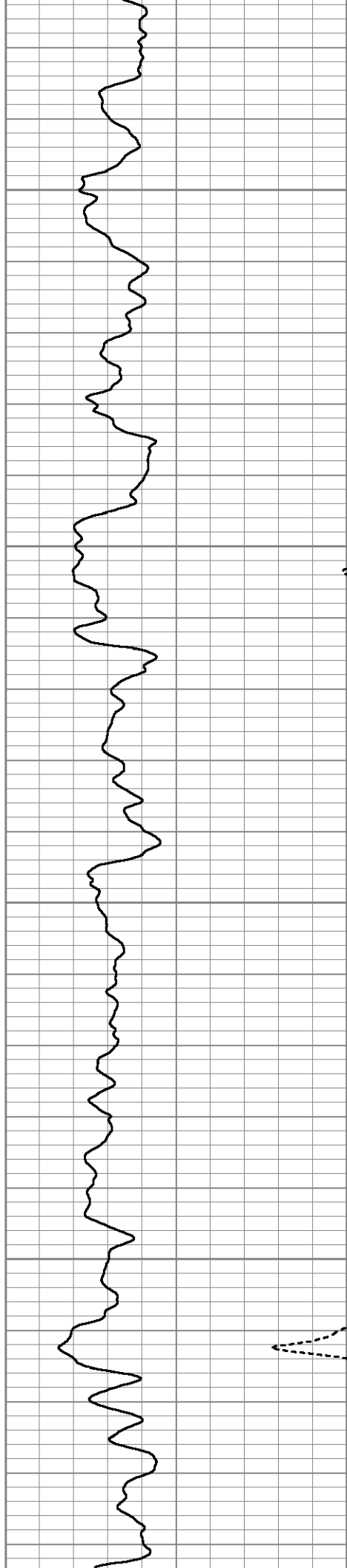


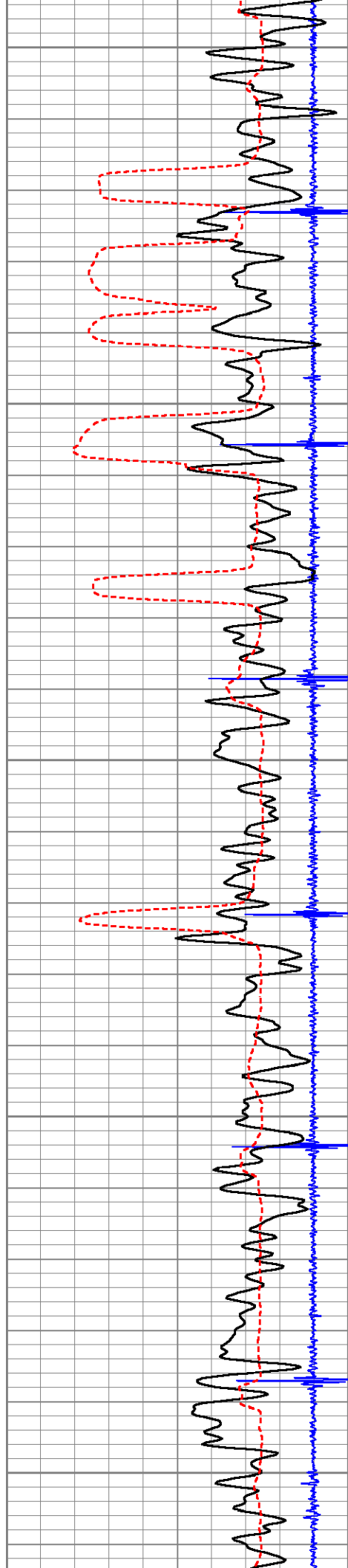
1100

1150

1200

1250





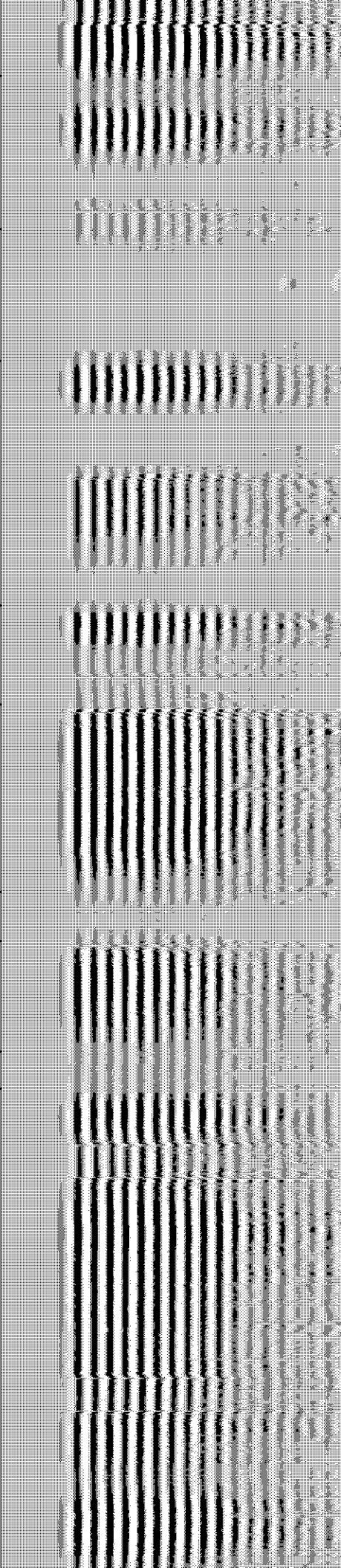
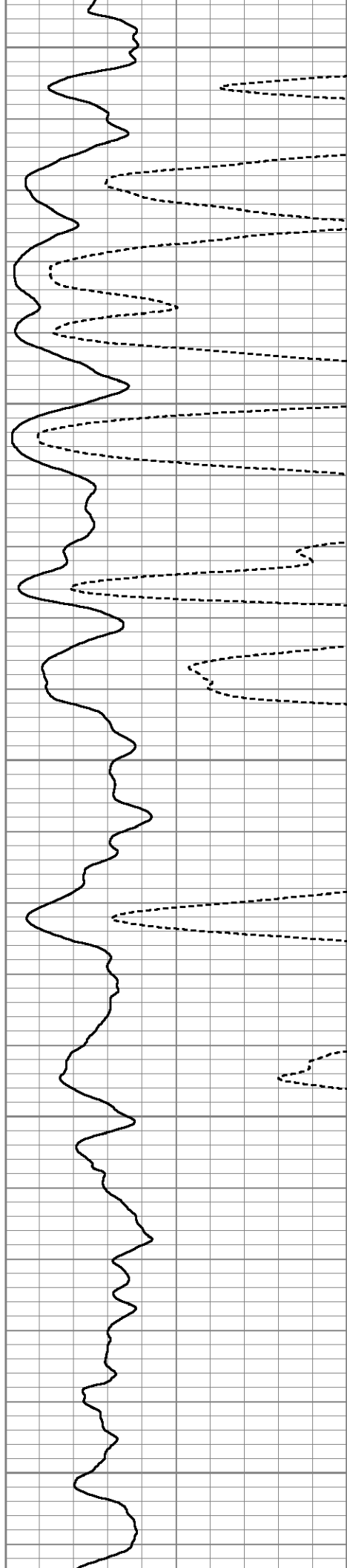
1300

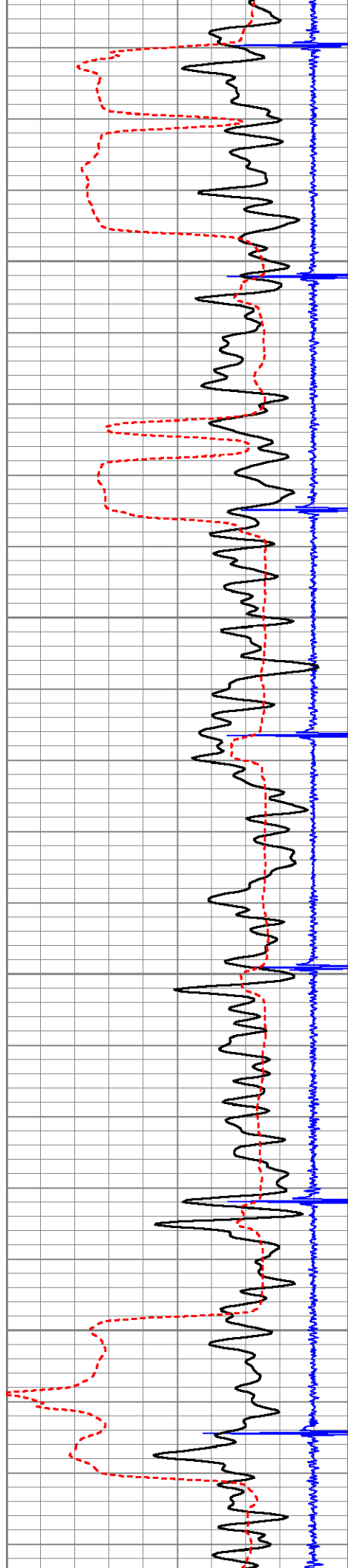
1350

1400

1450

1500



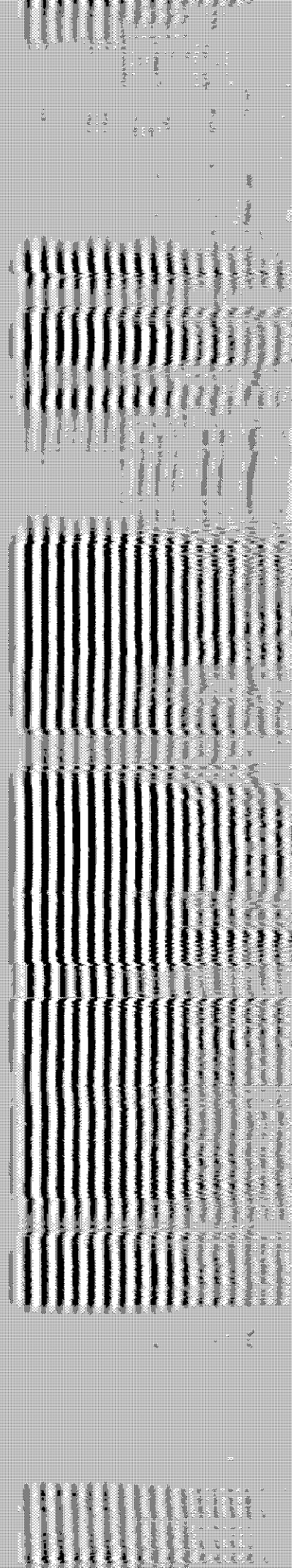
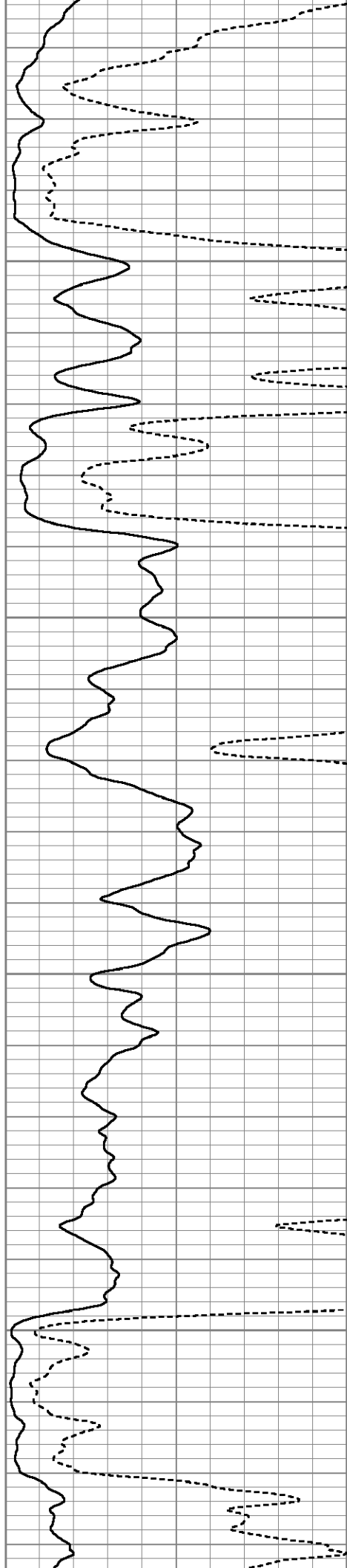


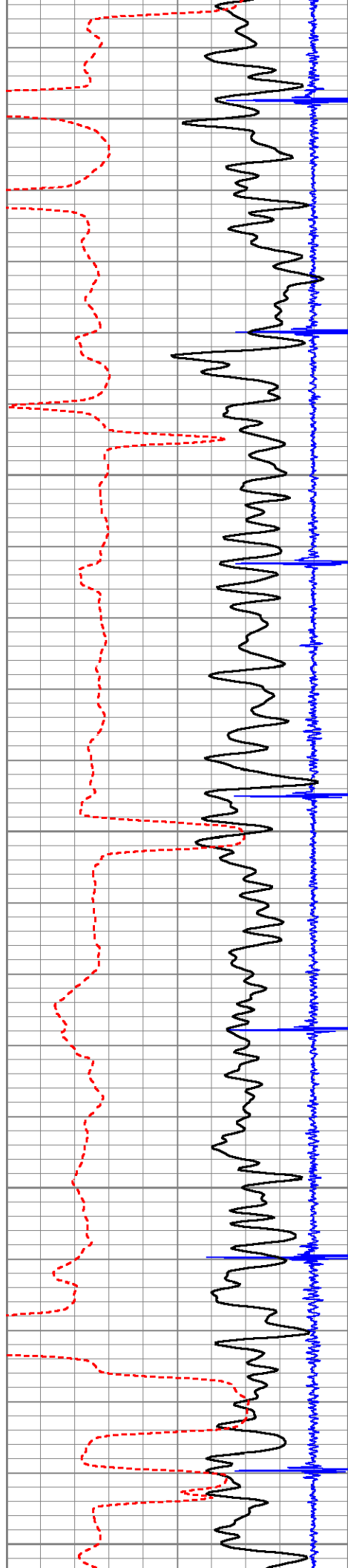
1550

1600

1650

1700





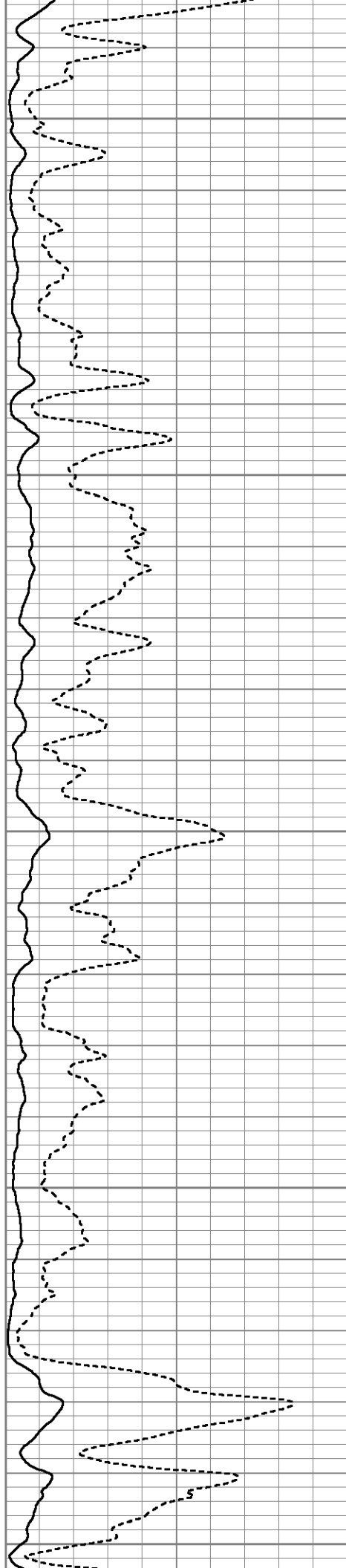
1750

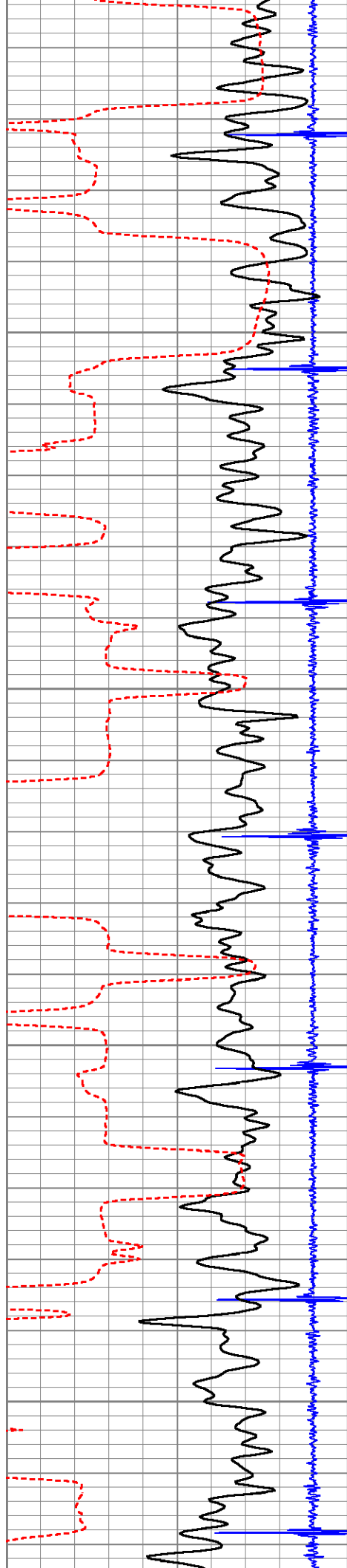
1800

1850

1900

1950



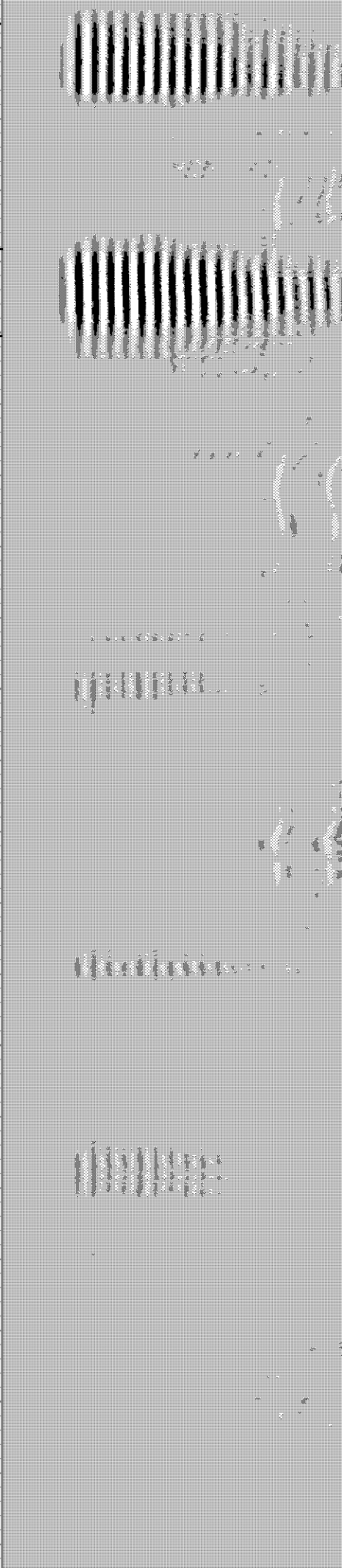
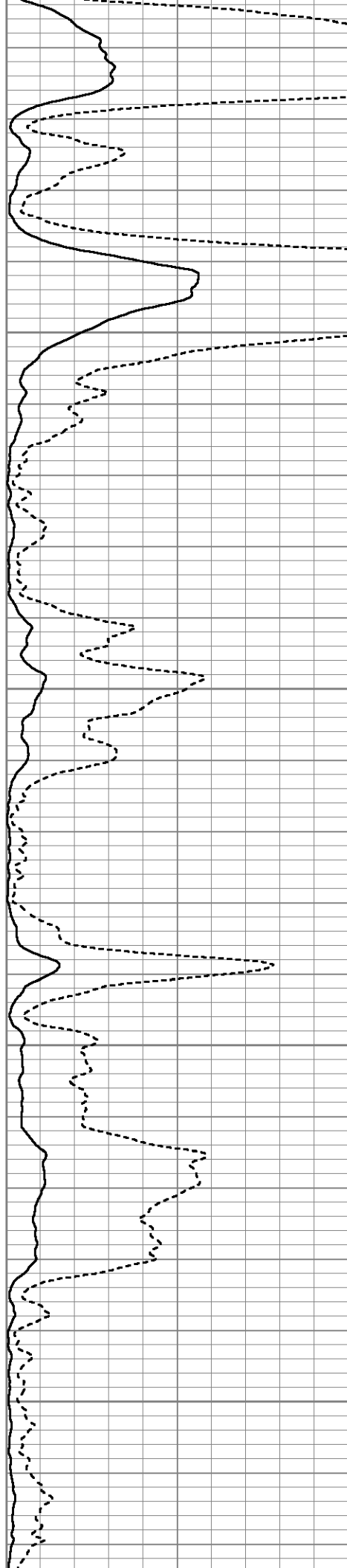


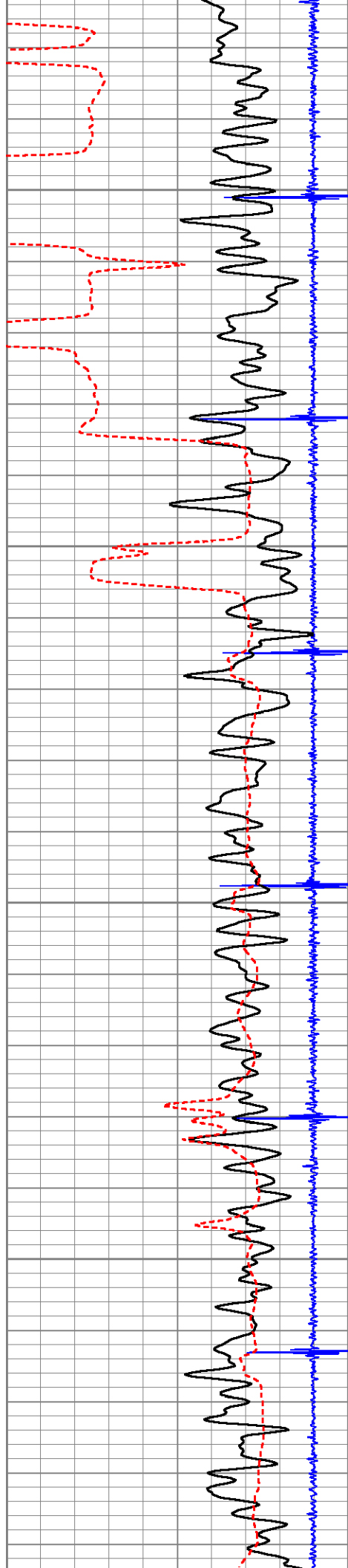
2000

2050

2100

2150



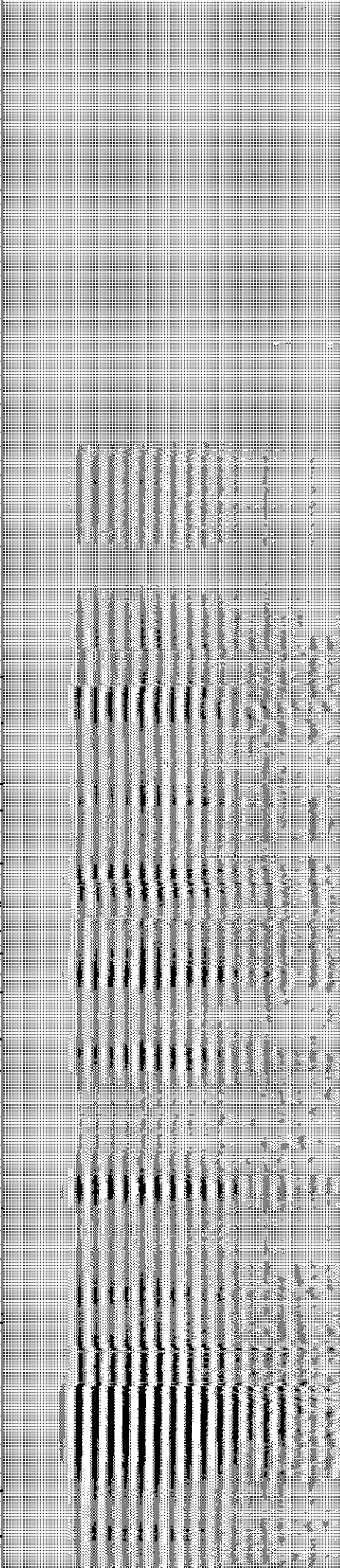
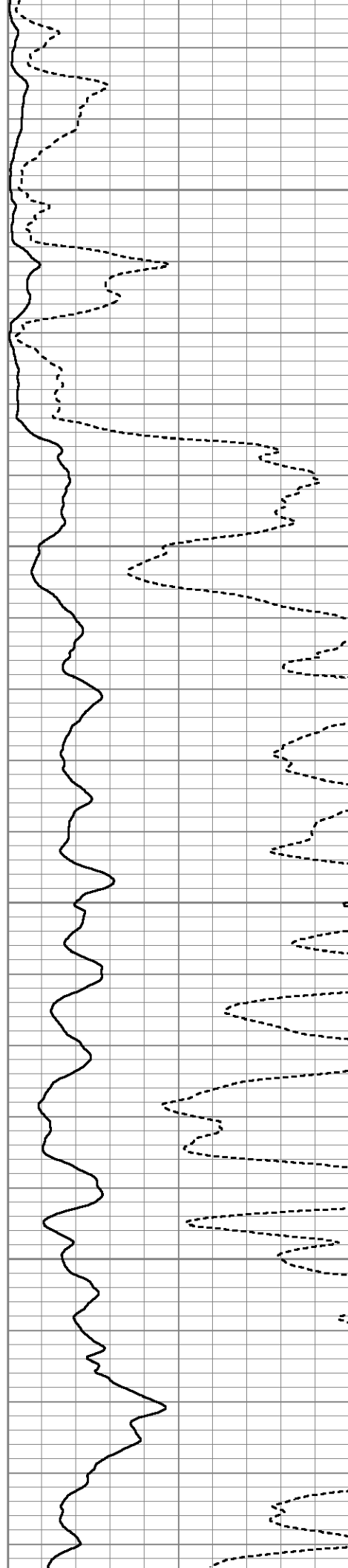


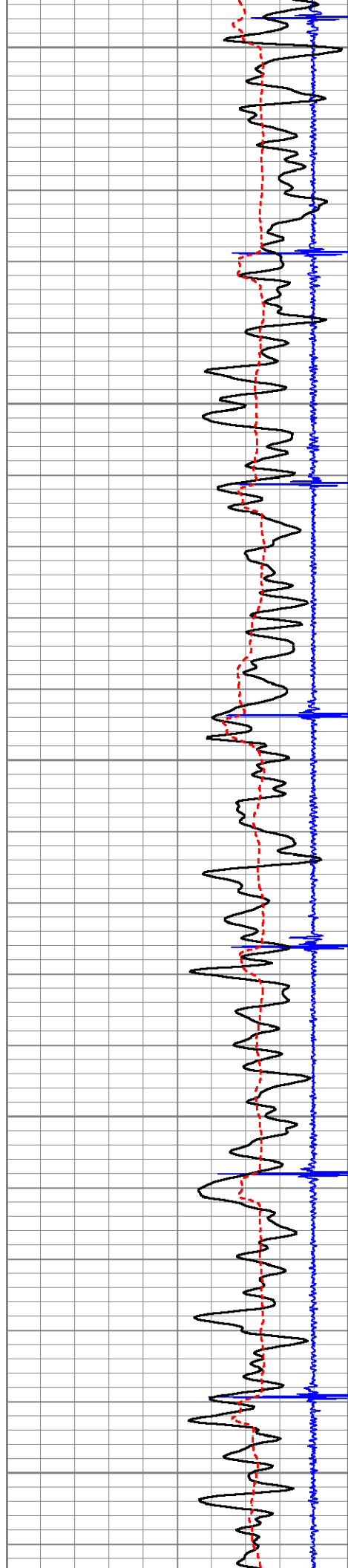
2200

2250

2300

2350





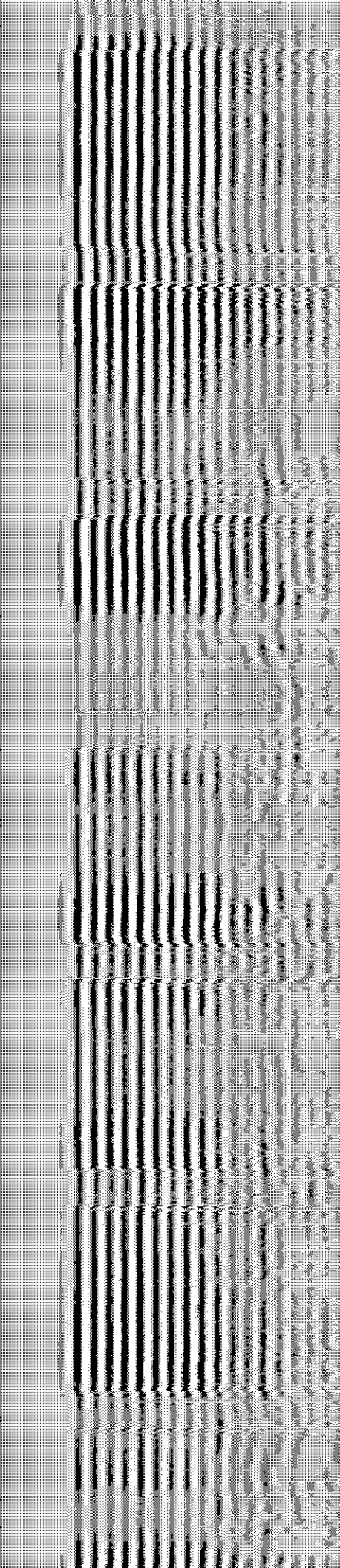
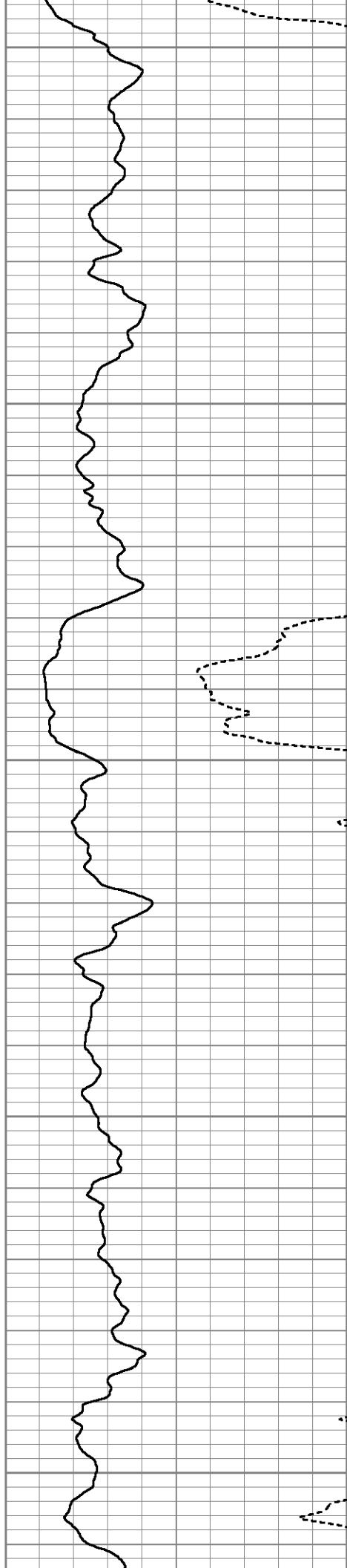
2400

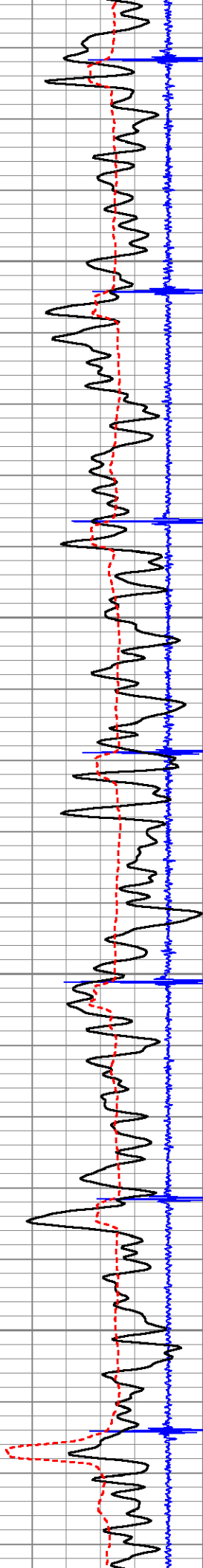
2450

2500

2550

2600



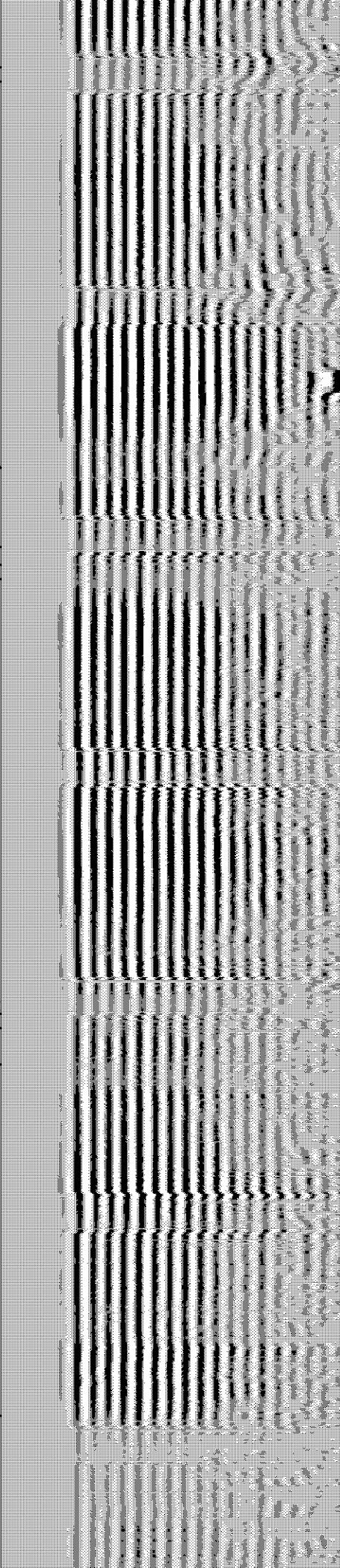
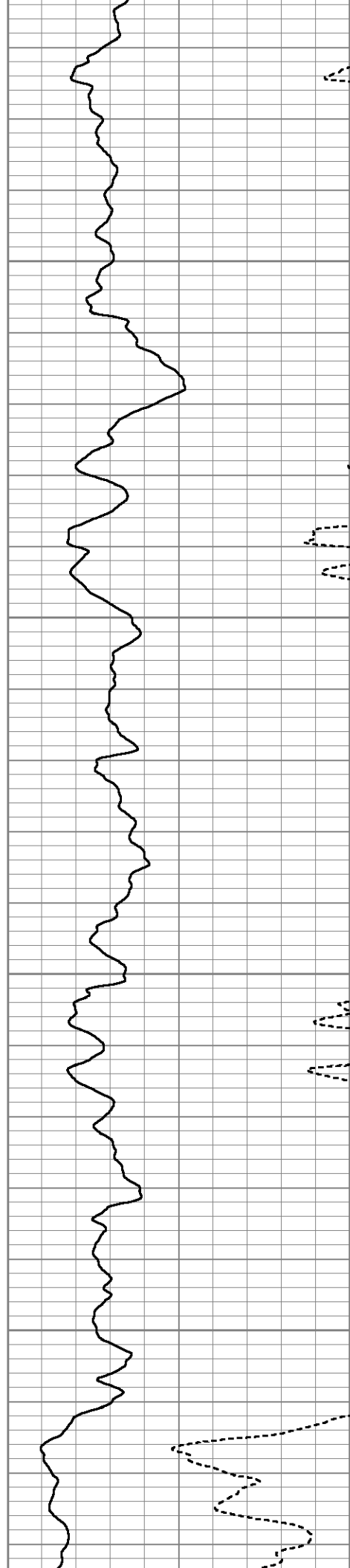


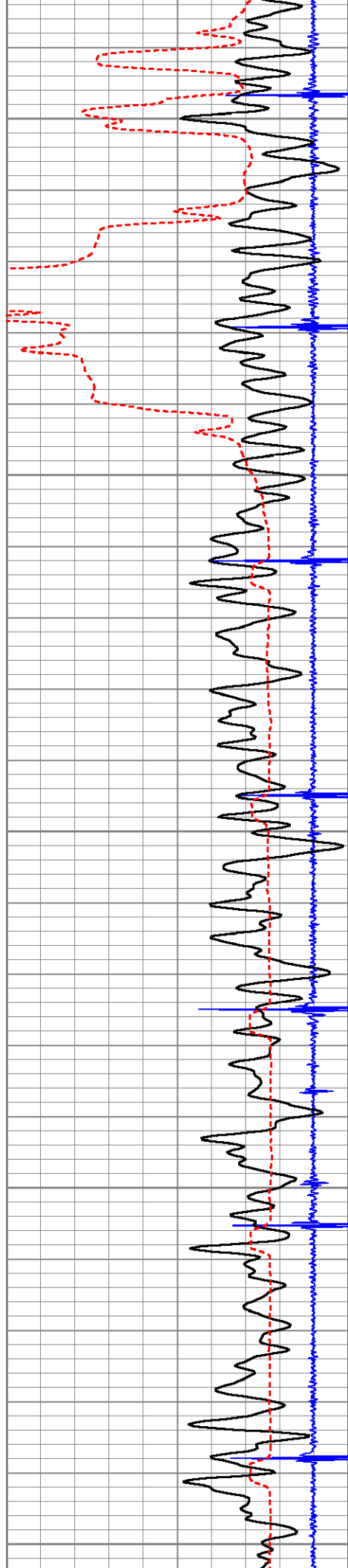
2650

2700

2750

2800





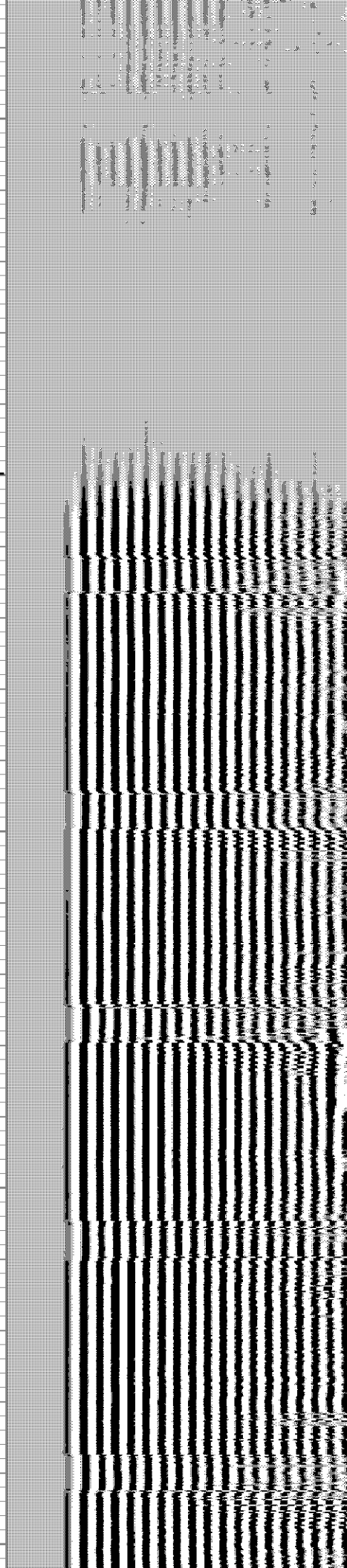
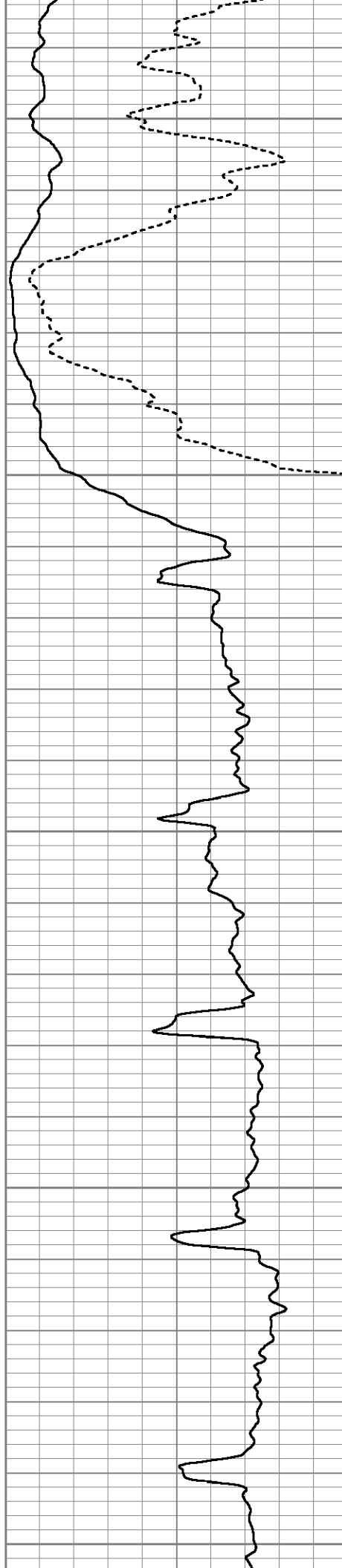
2850

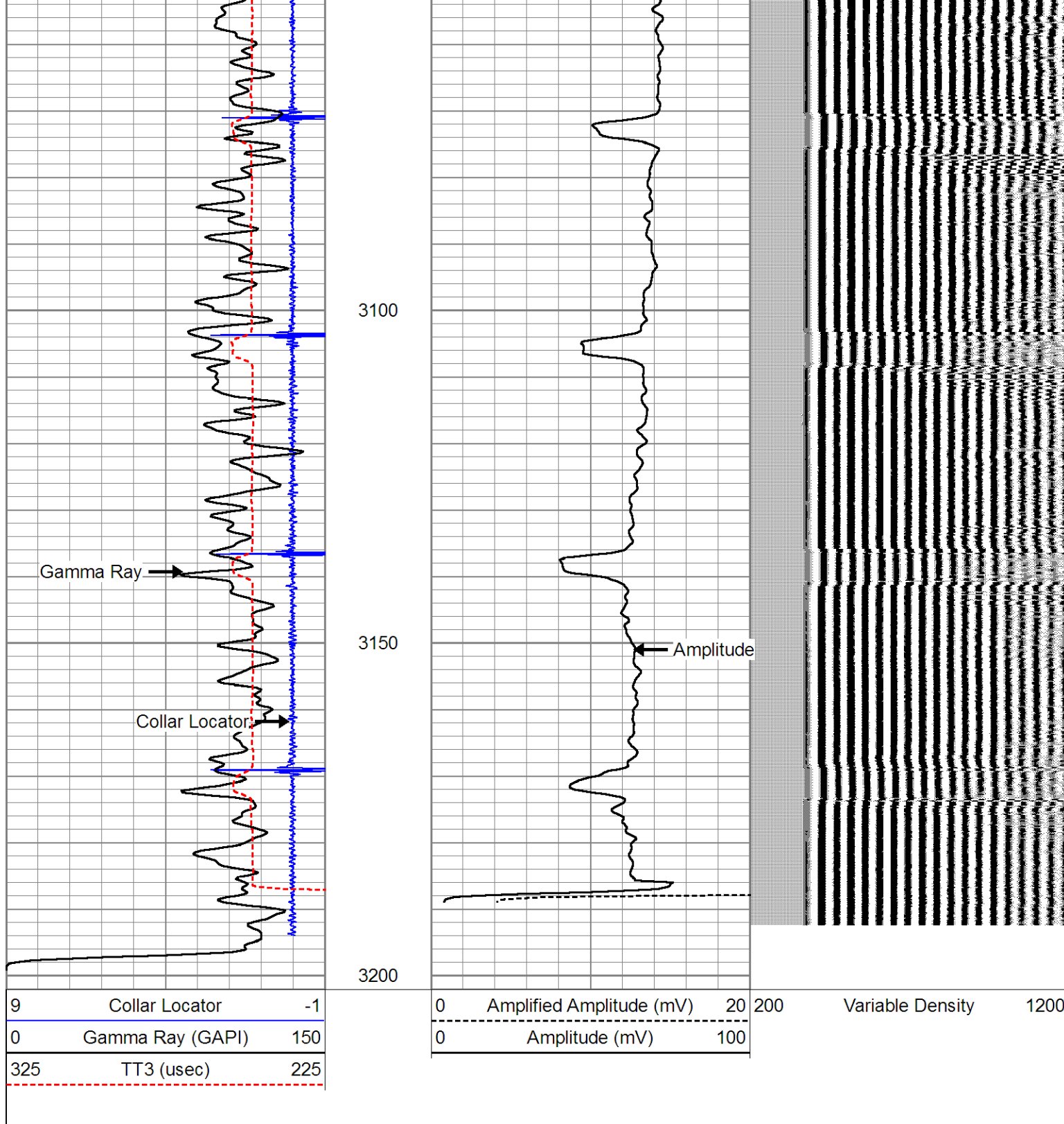
2900

2950

3000

3050





Calibration Report

Database File: uprr marrs 1-3.db
 Dataset Pathname: pass4
 Dataset Creation: Fri Apr 25 08:46:28 2014 by Log 7.0 B1

Gamma Ray Calibration Report

Serial Number: 51013
 Tool Model: probe 2.75
 Performed: Thu Feb 23 11:03:07 2012

Calibrator Value: 1400.0 GAPI

Background Reading: 26.8 cps

Background Reading:	20.0	cps
Calibrator Reading:	1120.0	cps
Sensitivity:	0.9000	GAPI/cps

Temperature Calibration Report

Serial Number: 51013
 Tool Model: probe 2.75
 Performed: Sun Jun 13 13:33:21 1993

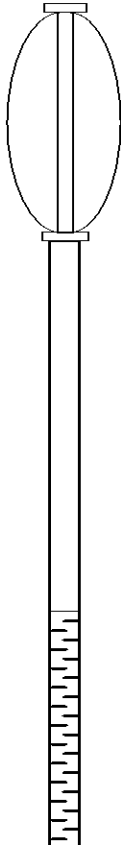
	Reference	Reading
Low Reference:	0.00 degF	0.00 cps
High Reference:	1.00 degF	1.00 cps
Gain:	1.00	
Offset:	0.00	
Delta Spacing	1	

Cement Bond Log Calibration Report

Serial Number: 050215
 Tool Model: Probe
 Performed: Fri Apr 25 08:45:20 2014

Depth: 3057.85 ft
 Casing Diameter: 4.5 in

	3' Spacing	5' Spacing	
Signal Zero:	0	0	mV
Calibrated Amplitude:	81.1961	81.1961	mV
Reading at Signal Zero:	0.0123779	0.0124023	V
Reading in Free Pipe:	0.511401	0.519019	V
Gain:	162.71	160.271	
Offset:	-2.01401	-1.98774	

Sensor	Offset (ft)	Schematic	Description	Len (ft)	OD (in)	Wt (lb)
			CSSROLLER	2.20	1.69	4.41
WVF3	10.78		CBL-Probe (050215) Probe 2.75" Dual Receiver Bond	8.75	2.75	60.00
WVF5	9.78					

