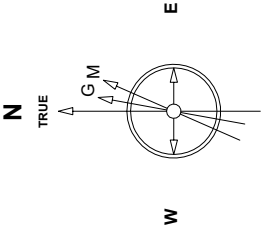
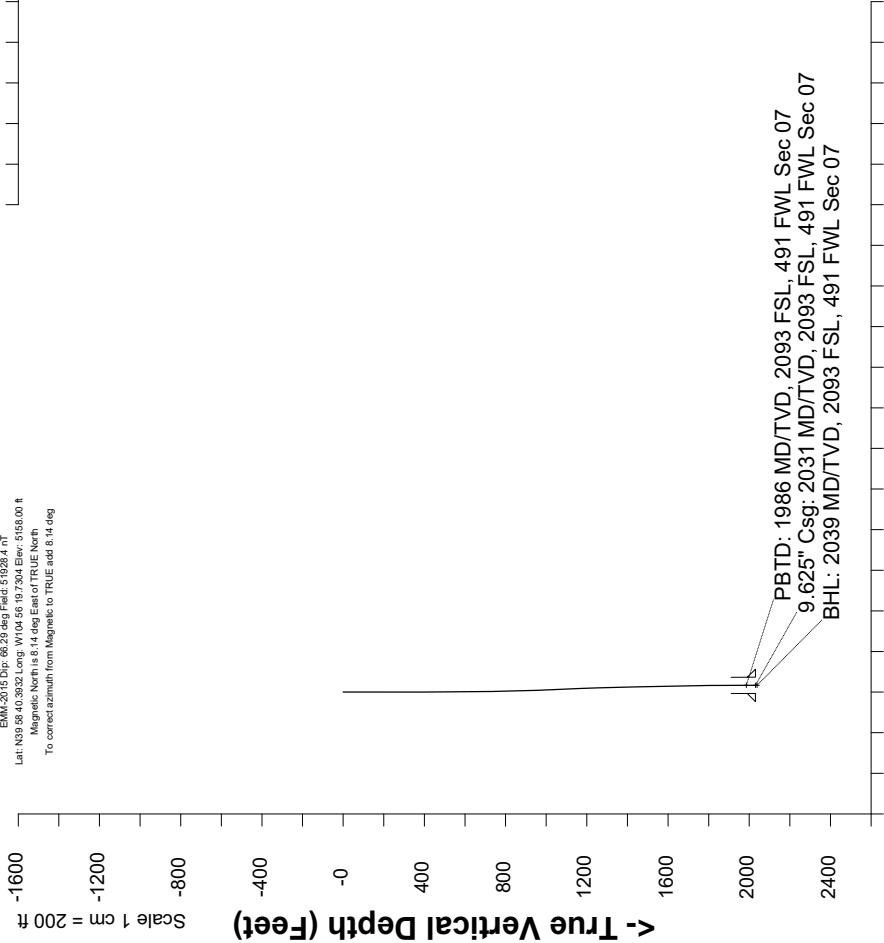


Great Western Operating Company, LLC

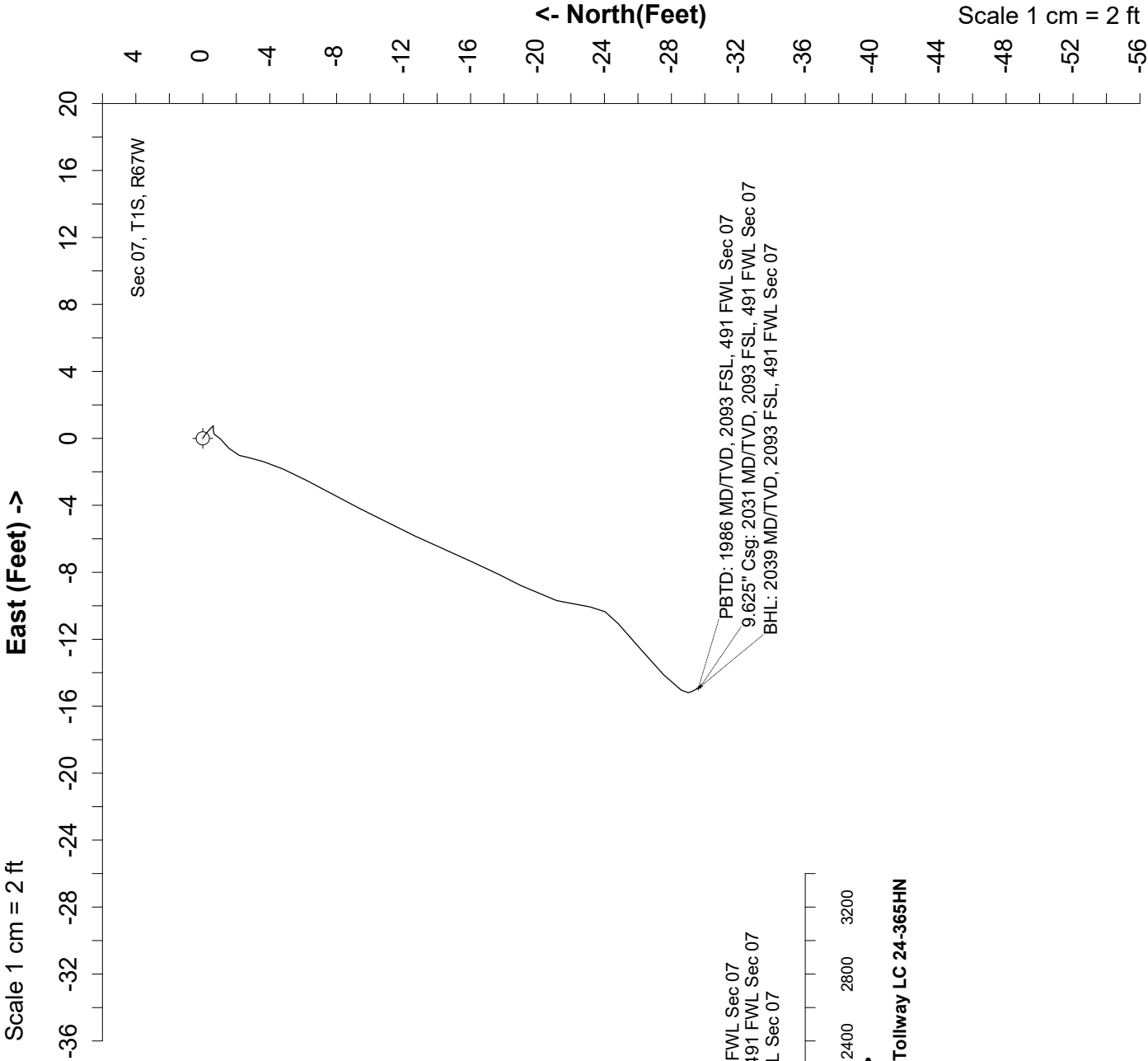
Location	Colorado	Slot	N08 - Tollway LC 24-365HN
Field	Wattenburg	Well	Tollway LC 24-365HN
Installation	Tollway	Wellbore	Tollway LC 24-365HN - Surface Hole



May 4, 2019
EMA-2015 Dir: 66.20 deg Field: 51928.4 nT
Lat: N39 58.40.3032 Long: W104 56 19.7304 Elev: 5155.00 ft
Magnetic North is 8.14 deg East of TRUE North
To correct azimuth from Magnetic to TRUE add 8.14 deg



Scale 1 cm = 200 ft
Vertical Section (Feet) ->
Azimuth 206.44 with reference 0.00 N, 0.00 E from N08 - Tollway LC 24-365HN



Sec 07, T1S, R67W

Header Information		measured depth (ft)	inclination (°)	azimuth (°)	true vertical depth (ft)	northing +N/-S (ft)	easting +E/-W (ft)
Operator Name		0	0.00	0.00	0	0.00	0.00
Great Western Oil & Gas Company LLC		84	0.40	121.65	84	-0.15	0.25
Operator Number		170	0.31	145.80	170	-0.50	0.64
10110		260	0.10	347.24	260	-0.63	0.76
Well Name and Number		353	0.30	253.05	353	-0.62	0.50
Tollway LC 24-365HN		442	0.03	291.27	442	-0.68	0.26
API Number (if available)		532	0.56	214.04	532	-1.04	-0.01
05-001-10438		622	0.47	245.25	622	-1.55	-0.59
Location: QQ SEC TWP RGE		712	0.61	191.54	712	-2.18	-1.02
NWSW Sec 7 1S 67W		802	1.31	196.08	802	-3.64	-1.40
Citing Type: Planned or Actual		892	2.30	207.60	892	-6.23	-2.52
Actual		982	2.25	208.36	982	-9.38	-4.20
Deviation Indicator		1072	2.39	204.46	1072	-12.64	-5.82
Horizontal	▼	1162	2.43	204.31	1162	-16.09	-7.38
North Reference		1252	1.69	208.29	1252	-19.00	-8.79
True	▼	1342	1.31	195.66	1342	-21.16	-9.70
Grid Type		1432	1.25	185.13	1432	-23.13	-10.06
	▼	1522	1.49	231.69	1522	-24.83	-11.07
		1611	1.36	225.43	1611	-26.29	-12.73
		1701	1.04	231.68	1701	-27.54	-14.13
		1791	0.76	206.30	1791	-28.58	-15.04
		1881	0.26	120.94	1881	-29.22	-15.13
		1971	0.28	178.85	1971	-29.55	-14.95
		1983	0.22	142.03	1983	-29.60	-14.93
		2039	0.22	142.03	2039	-29.77	-14.80