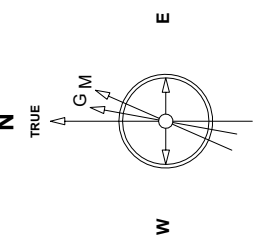
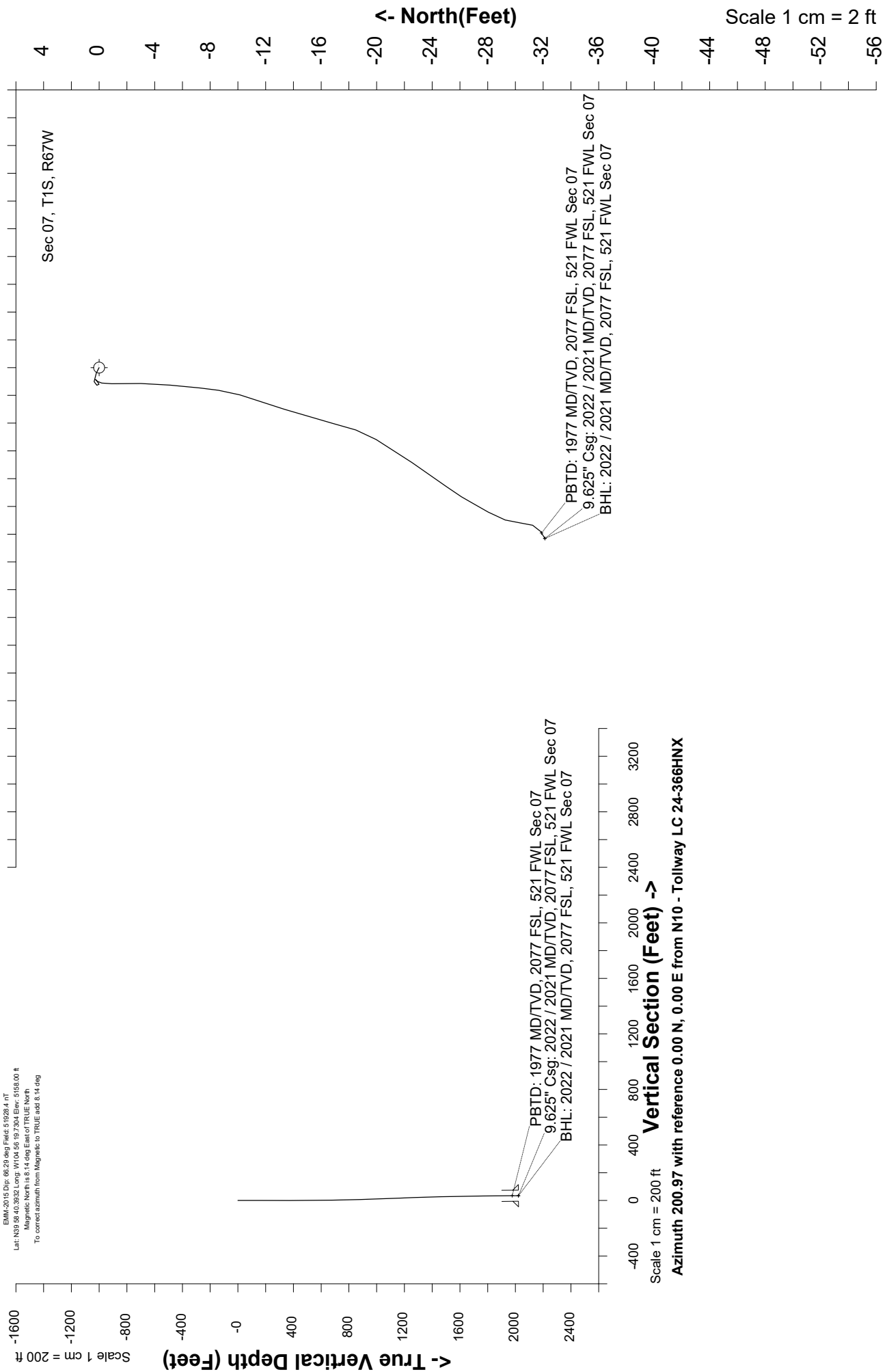


Great Western Operating Company, LLC

Location	Colorado	Slot	N10 - Tollway LC 24-366HNX
Field	Wattenburg	Well	Tollway LC 24-366HNX
Installation	Tollway	Wellbore	Tollway LC 24-366HNX - Surface Hole



May-4-2019
 EMA-2019.Dwg 66.20.dwg Field: 51928.4.nt
 Lat: N39.58403932 Long: W104.55197304 Elev: 5155.00 ft
 Magnetic North is 8.14 deg East of TRUE North
 To correct azimuth from Magnetic to TRUE add 8.14 deg



Header Information		measured depth (ft)	inclination (°)	azimuth (°)	true vertical depth (ft)	northing +N/-S (ft)	easting +E/-W (ft)
Operator Name	Great Western Oil & Gas Company LLC	0	0.00	0.00	0	0.00	0.00
Operator Number	10110	84	0.62	296.90	84	0.21	-0.41
Well Name and Number	Tollway LC 24-366HNX	170	0.26	254.73	170	0.36	-1.01
API Number (if available)	05-001-10427	262	0.20	203.42	262	0.16	-1.27
Location: QQ SEC TWP RGE	NWSW Sec 7 1S 67W	355	0.17	92.93	355	0.01	-1.20
Citing Type: Planned or Actual	Actual	444	0.29	40.07	444	0.17	-0.92
Deviation Indicator	Horizontal	534	0.33	227.80	534	0.17	-0.97
North Reference	True	624	1.16	179.92	624	-0.91	-1.16
Grid Type		714	1.50	179.28	714	-3.00	-1.14
		804	1.21	188.12	804	-5.12	-1.26
		894	1.55	183.55	894	-7.28	-1.47
		984	2.17	194.24	984	-10.14	-1.97
		1074	2.14	201.52	1074	-13.36	-3.00
		1164	2.42	191.86	1164	-16.78	-4.01
		1254	1.95	210.74	1254	-19.96	-5.18
		1344	1.95	214.66	1344	-22.53	-6.84
		1434	1.94	215.10	1434	-25.04	-8.58
		1524	0.80	205.75	1524	-26.85	-9.73
		1613	0.97	213.27	1613	-28.04	-10.42
		1703	0.77	193.76	1703	-29.26	-10.98
		1793	0.65	188.19	1793	-30.36	-11.19
		1883	0.50	193.51	1883	-31.24	-11.36
		1966	0.60	238.59	1966	-31.82	-11.81
		2022	0.60	238.59	2021	-32.13	-12.31