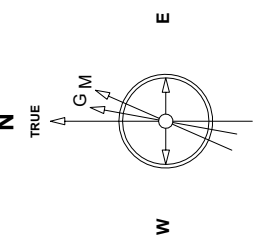


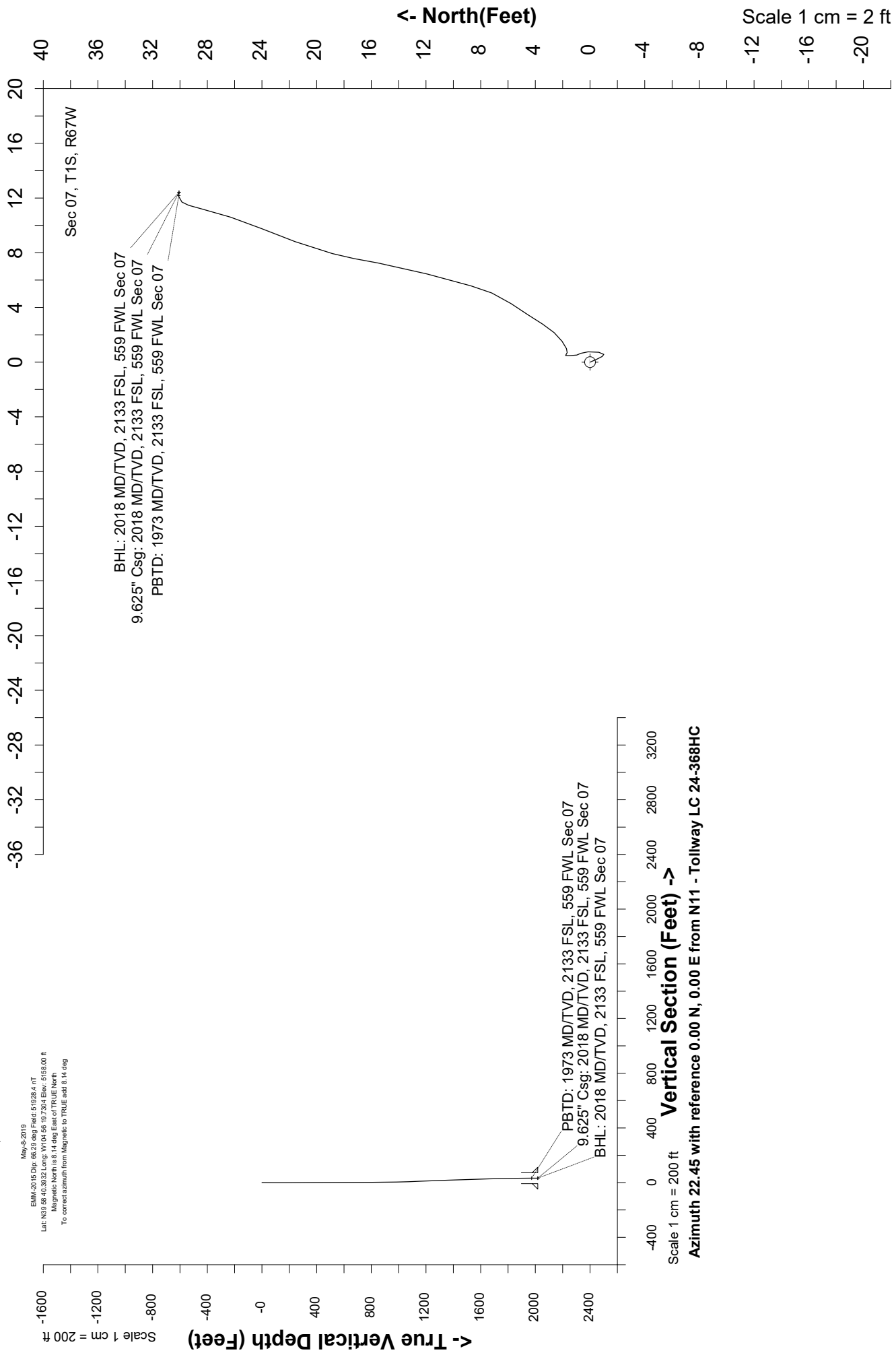
# Great Western Operating Company, LLC

Location	Colorado	Slot	N11 - Tollway LC 24-368HC
Field	Wattenburg	Well	Tollway LC 24-368HC
Installation	Tollway	Wellbore	Tollway LC 24-368HC - Surface Hole



May-4-2019  
 EMA-2019.Dwg 66.20.dwg Field: 51928.4.nt  
 Lat: N39.58403932 Long: W104.55197304 Elev: 5155.00 ft  
 Magnetic North is 8.14 deg East of TRUE North  
 To correct azimuth from Magnetic to TRUE add 8.14 deg

Scale 1 cm = 2 ft



Scale 1 cm = 2 ft

Scale 1 cm = 200 ft

Vertical Section (Feet) ->

Azimuth 22.45 with reference 0.00 N, 0.00 E from N11 - Tollway LC 24-368HC

Scale 1 cm = 2 ft

<b>Header Information</b>		measured depth (ft)	inclination (°)	azimuth (°)	true vertical depth (ft)	northing +N/-S (ft)	easting +E/-W (ft)
Operator Name	Great Western Oil & Gas Company LLC	0	0.00	0.00	0	0.00	0.00
Operator Number	10110	84	0.75	156.91	84	-0.51	0.22
Well Name and Number	Tollway LC 24-368HC	170	0.17	82.69	170	-1.01	0.56
API Number (if available)	05-001-10441	262	0.44	4.23	262	-0.64	0.72
Location: QQ SEC TWP RGE	NWSW Sec 7 1S 67W	355	0.52	0.59	355	0.14	0.76
Citing Type: Planned or Actual	Actual	444	0.23	317.89	444	0.68	0.64
Deviation Indicator	Horizontal	534	0.20	358.93	534	0.97	0.52
North Reference	True	624	0.45	354.59	624	1.48	0.48
Grid Type		714	0.07	133.83	714	1.79	0.49
		804	0.24	115.25	804	1.67	0.70
		894	1.01	55.15	894	2.05	1.52
		984	1.46	32.08	984	3.47	2.78
		1074	2.06	33.74	1074	5.79	4.28
		1164	2.07	13.85	1164	8.71	5.57
		1254	2.19	16.55	1254	11.94	6.45
		1344	2.46	9.11	1344	15.49	7.25
		1434	1.92	14.98	1434	18.86	7.94
		1524	1.73	20.85	1524	21.58	8.82
		1613	1.63	21.47	1613	24.01	9.76
		1703	1.48	18.85	1703	26.31	10.60
		1793	1.41	13.08	1793	28.48	11.23
		1883	0.47	38.32	1883	29.85	11.71
		1962	0.31	94.70	1962	30.09	12.12
		2018	0.31	94.70	2018	30.06	12.42