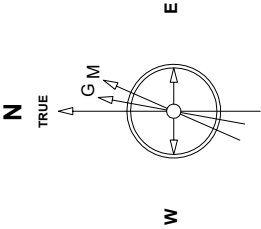
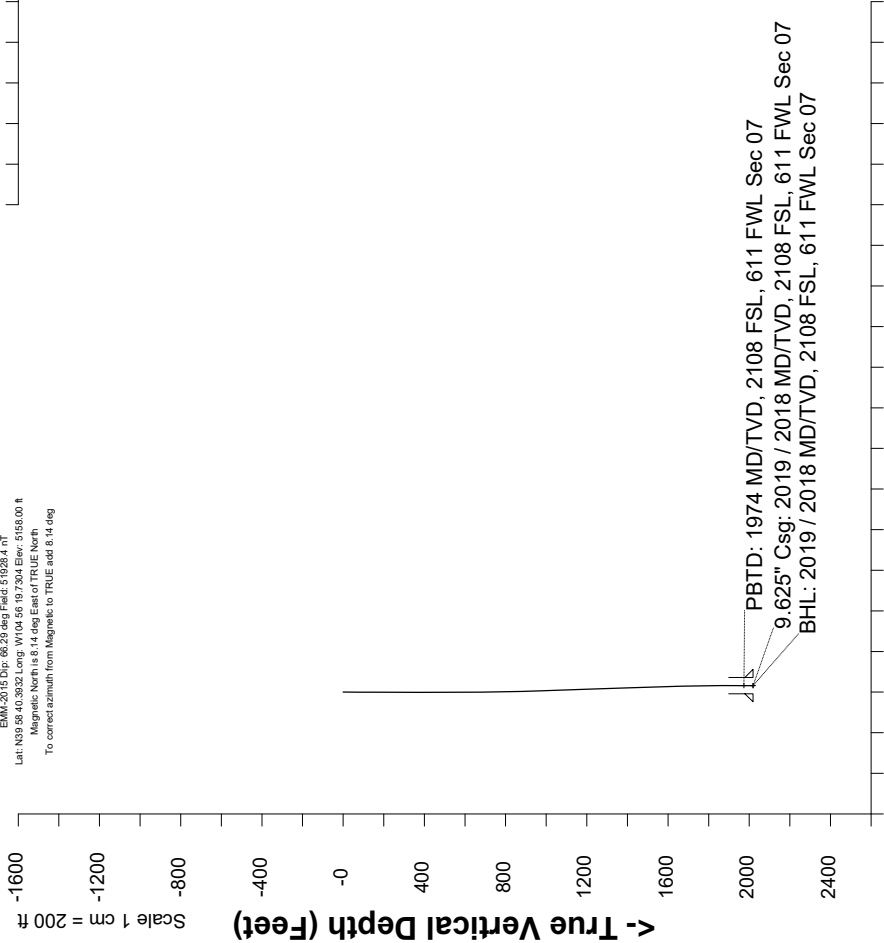


Great Western Operating Company, LLC

Location	Colorado	Slot	N15 - Tollway LC 24-370HC
Field	Wattenburg	Well	Tollway LC 24-370HC
Installation	Tollway	Wellbore	Tollway LC 24-370HC - Surface Hole

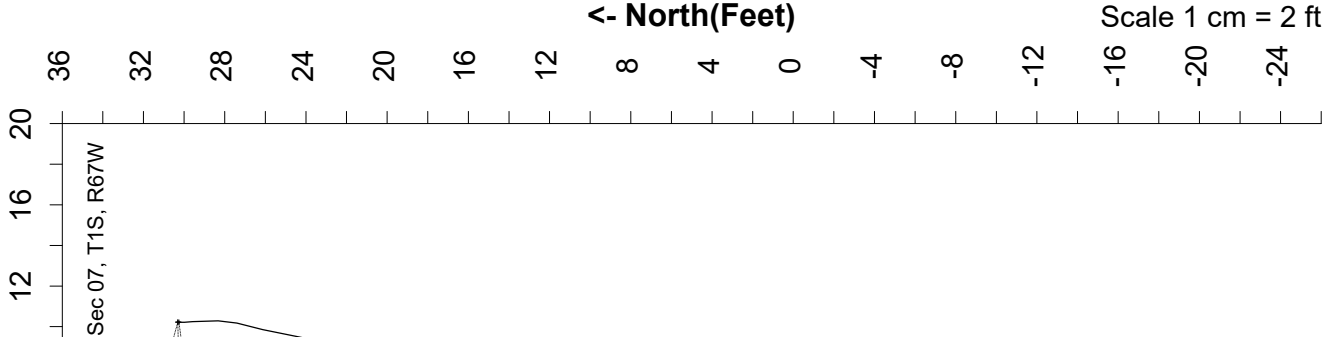


May 4, 2019
EMA-2015 Dir. 66.20 dir. Field: 51928.4 nT
Lat: N39 58.40.3032 Long: W104 56 19.7304 Elev: 5155.00 ft
Magnetic North is 8.14 deg East of TRUE North
To correct azimuth from Magnetic to TRUE add 8.14 deg



Scale 1 cm = 200 ft
Vertical Section (Feet) ->
Azimuth 18.64 with reference 0.00 N, 0.00 E from N15 - Tollway LC 24-370HC

Scale 1 cm = 2 ft



North(Feet)

Scale 1 cm = 2 ft

Header Information		measured depth (ft)	inclination (°)	azimuth (°)	true vertical depth (ft)	northing +N/-S (ft)	easting +E/-W (ft)
Operator Name		0	0.00	0.00	0	0.00	0.00
Great Western Oil & Gas Company LLC		84	0.20	223.02	84	-0.11	-0.10
Operator Number		170	0.38	233.58	170	-0.39	-0.43
10110		262	0.07	189.98	262	-0.62	-0.69
Well Name and Number		355	0.07	233.13	355	-0.71	-0.74
Tollway LC 24-370HC		444	0.17	249.84	444	-0.79	-0.91
API Number (if available)		534	0.54	293.11	534	-0.67	-1.43
05-001-10434		624	0.87	32.93	624	0.07	-1.44
Location: QQ SEC TWP RGE		714	0.56	66.91	714	0.82	-0.67
NWSW Sec 7 1S 67W		804	1.02	47.01	804	1.53	0.32
Citing Type: Planned or Actual		894	1.75	28.65	894	3.29	1.57
Actual		984	2.06	30.92	984	5.88	3.06
Deviation Indicator		1074	2.11	28.81	1074	8.72	4.69
Horizontal		1164	2.18	15.75	1164	11.82	5.95
North Reference		1254	1.77	25.52	1254	14.72	7.01
True		1344	1.68	21.54	1344	17.20	8.10
Grid Type		1434	2.26	8.80	1434	20.18	8.85
		1524	1.77	6.59	1524	23.32	9.28
		1613	1.93	16.07	1613	26.12	9.86
		1703	0.95	0.66	1703	28.33	10.28
		1793	0.65	355.08	1792	29.58	10.25
		1883	0.07	10.49	1882	30.14	10.22
		1963	0.07	358.74	1962	30.24	10.22
		2019	0.07	358.74	2018	30.31	10.22