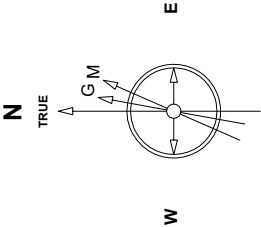


Great Western Operating Company, LLC

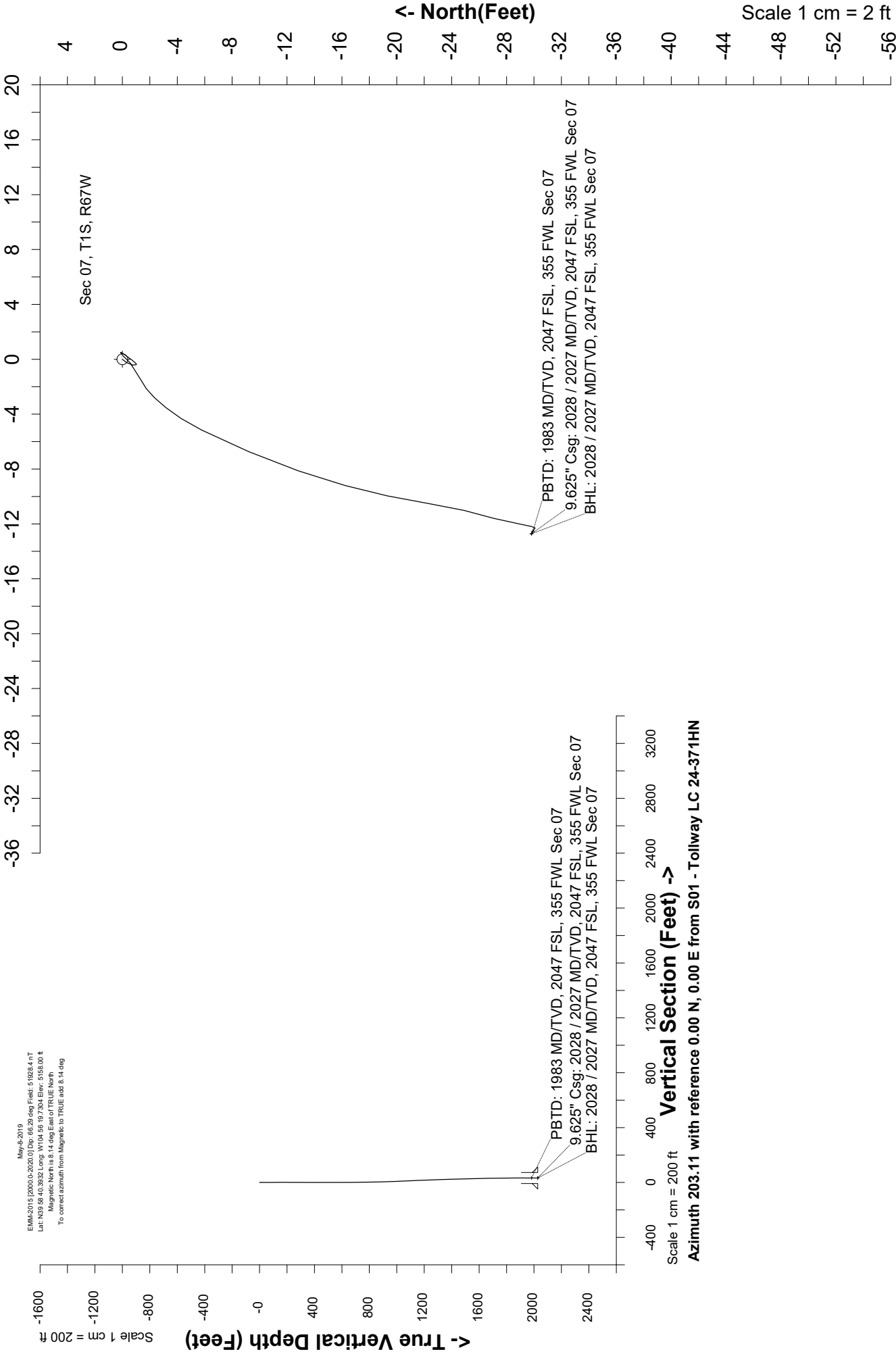
Location	Colorado	Slot	S01 - Tollway LC 24-371HN
Field	Wattenburg	Well	Tollway LC 24-371HN
Installation	Tollway	Wellbore	Tollway LC 24-371HN (AWB)



May 4, 2019
EMA-2015 (2000.0-2020.0) Dip: 68.29 deg Field: 51924.4 nT
Lat: N39 58.40 39.52 Long: W104 56 19 7.304 Elev: 5155.00 ft
Magnetic North is 8.14 deg East of TRUE North
To correct azimuth from Magnetic to TRUE add 8.14 deg

Scale 1 cm = 2 ft

East (Feet) ->



Header Information		measured depth (ft)	inclination (°)	azimuth (°)	true vertical depth (ft)	northing +N/-S (ft)	easting +E/-W (ft)
Operator Name		0	0.00	0.00	0	0.00	0.00
Great Western Oil & Gas Company LLC		84	0.53	217.46	84	-0.31	-0.24
Operator Number		170	0.22	163.68	170	-0.78	-0.43
10110		260	0.10	181.85	260	-1.03	-0.39
Well Name and Number		353	0.61	39.28	353	-0.72	-0.07
Tollway LC 24-371HN		442	0.50	32.09	442	-0.03	0.43
API Number (if available)		532	0.62	227.34	532	-0.03	0.28
05-001-10423		622	0.35	221.44	622	-0.56	-0.26
Location: QQ SEC TWP RGE		712	0.78	244.46	712	-1.03	-0.99
NWSW Sec 7 1S 67W		802	0.96	232.83	802	-1.75	-2.15
Citing Type: Planned or Actual		892	1.58	218.98	892	-3.17	-3.53
Actual		982	2.35	207.40	982	-5.78	-5.16
Deviation Indicator		1072	2.47	202.01	1072	-9.21	-6.73
Horizontal		1162	2.45	200.29	1162	-12.81	-8.13
North Reference		1252	2.11	194.22	1252	-16.22	-9.20
True		1342	1.93	193.08	1342	-19.31	-9.95
Grid Type		1432	1.91	188.10	1432	-22.27	-10.51
		1522	1.53	194.60	1522	-24.91	-11.02
		1611	1.34	195.18	1610	-27.07	-11.59
		1701	0.91	188.30	1700	-28.79	-11.97
		1791	0.42	199.60	1790	-29.81	-12.18
		1881	0.05	357.00	1880	-30.08	-12.30
		1972	0.27	297.94	1971	-29.94	-12.49
		2028	0.27	297.94	2027	-29.82	-12.72