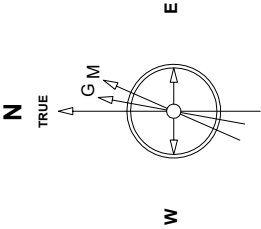


Great Western Operating Company, LLC

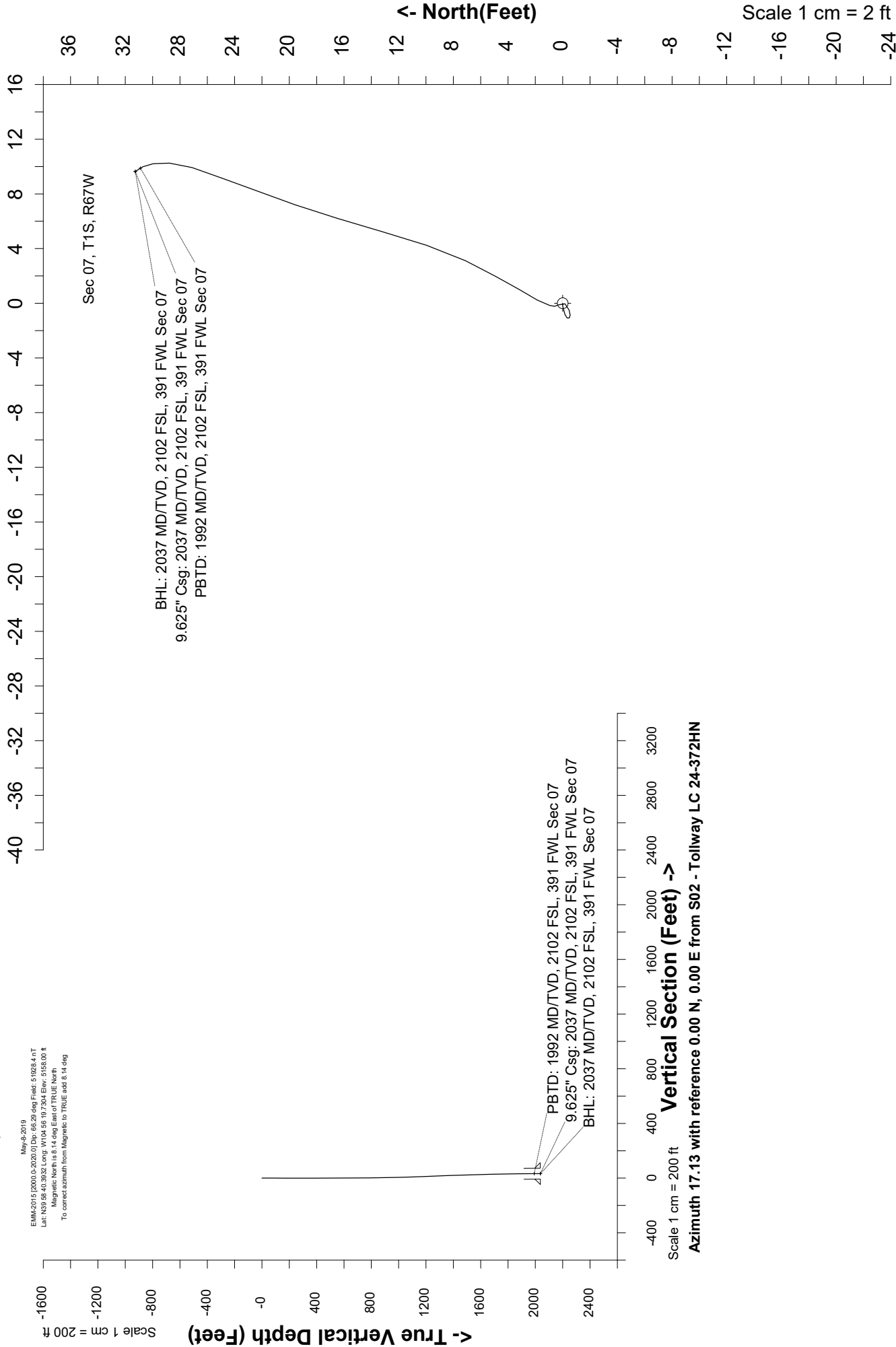
Location	Colorado	Slot	S02 - Tollway LC 24-372HN
Field	Wattenburg	Well	Tollway LC 24-372HN
Installation	Tollway	Wellbore	Tollway LC 24-372HN (AWB)



May 4, 2019
EMLA-2015 (2000.0-2020.0) Dip: 68.29 deg Field: 51824.4 nT
Lat: N39 58 40.3032 Long: W104 56 19.7304 Elev: 5155.00 ft
Magnetic North is 8.14 deg East of TRUE North
To correct azimuth from Magnetic to TRUE add 8.14 deg

Scale 1 cm = 2 ft

East (Feet) ->



Scale 1 cm = 200 ft

Vertical Section (Feet) ->

Azimuth 17.13 with reference 0.00 N, 0.00 E from S02 - Tollway LC 24-372HN

Header Information		measured depth (ft)	inclination (°)	azimuth (°)	true vertical depth (ft)	northing +N/-S (ft)	easting +E/-W (ft)
	Operator Name	0	0.00	0.00	0	0.00	0.00
	Great Western Oil & Gas Company LLC	84	0.33	269.04	84	0.00	-0.24
	Operator Number	170	0.51	245.08	170	-0.17	-0.84
	10110	260	0.24	137.25	260	-0.48	-1.07
	Well Name and Number	353	0.57	70.97	353	-0.47	-0.50
	Tollway LC 24-372HN	442	0.20	15.78	442	-0.18	-0.04
	API Number (if available)	532	0.42	339.43	532	0.28	-0.11
	05-001-10442	622	0.01	98.04	622	0.59	-0.22
	Location: QQ SEC TWP RGE	712	0.47	9.08	712	0.96	-0.16
	NWSW Sec 7 1S 67W	802	0.81	31.59	802	1.86	0.23
	Citing Type: Planned or Actual	892	1.15	29.49	892	3.19	1.01
	Actual	982	1.38	28.74	982	4.93	1.98
	Deviation Indicator	1072	1.75	26.33	1072	7.11	3.11
	Horizontal	1162	2.16	17.85	1162	9.95	4.24
	North Reference	1252	2.14	16.41	1252	13.18	5.23
	True	1342	2.27	16.60	1342	16.50	6.22
	Grid Type	1432	1.86	19.27	1432	19.59	7.21
		1522	1.78	20.74	1522	22.27	8.18
		1611	1.78	19.44	1611	24.87	9.13
		1701	1.25	19.30	1701	27.11	9.92
		1791	0.92	0.35	1791	28.76	10.25
		1881	0.60	354.09	1881	29.96	10.21
		1971	0.44	329.15	1971	30.72	9.98
		1981	0.57	327.75	1981	30.80	9.94
		2037	0.57	327.75	2037	31.27	9.64