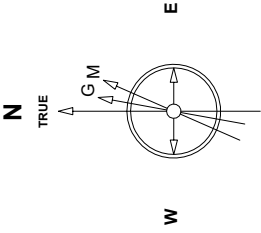


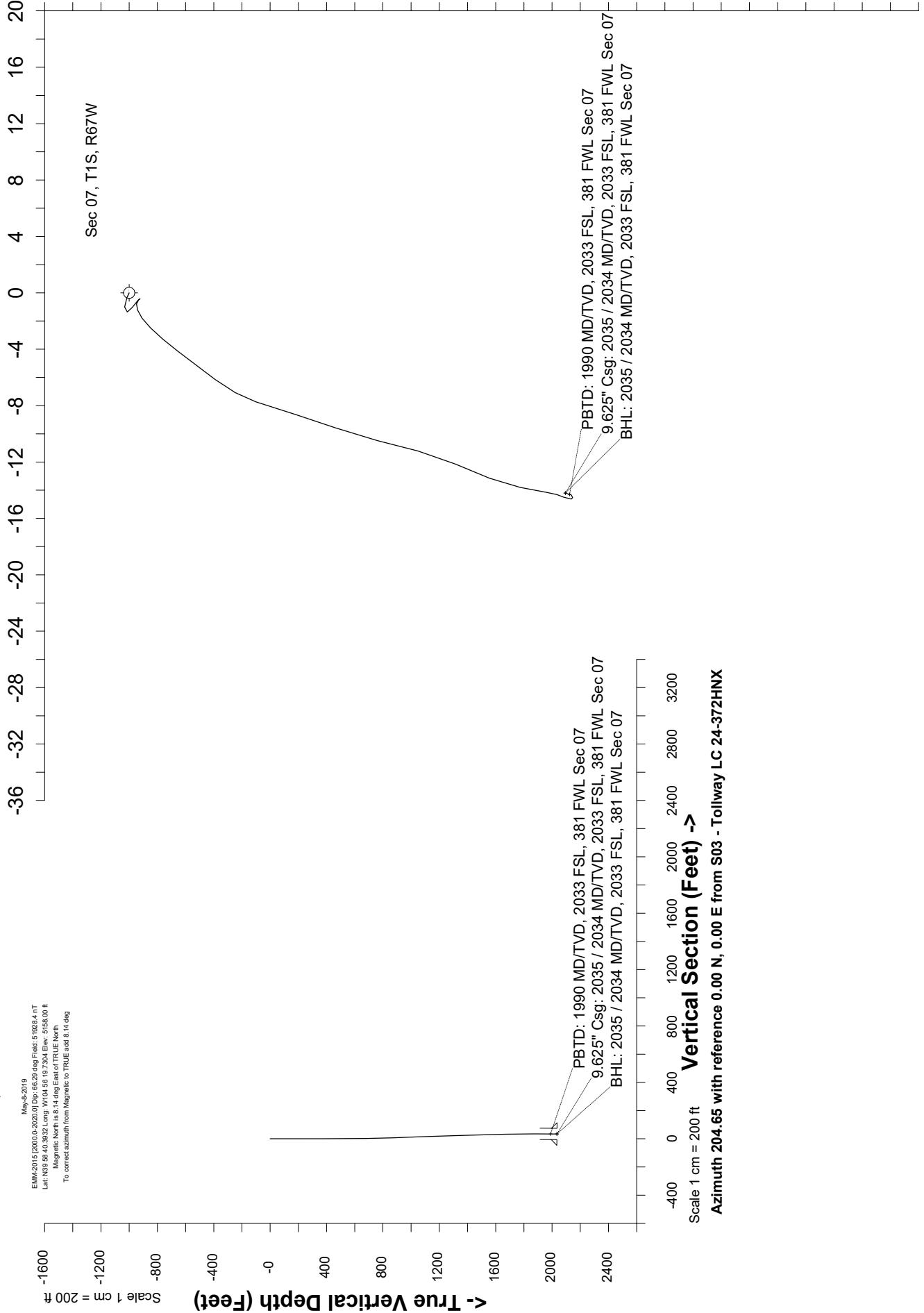
Great Western Operating Company, LLC



May 4, 2019
EMA-2015 (2000.0-2020.0) Dep. 68.29 deg Field: 51924.4 nT
Lat: N39 58.40 39.32 Long: W104 56.19 7.304 Elev: 5155.00 ft
Magnetic North is 8.14 deg East of TRUE North
To correct azimuth from Magnetic to TRUE add 8.14 deg

Scale 1 cm = 2 ft

East (Feet) ->



Scale 1 cm = 200 ft

Vertical Section (Feet) ->

Azimuth 204.65 with reference 0.00 N, 0.00 E from S03 - Tollway LC 24-372HNX

Scale 1 cm = 2 ft

North(Feet)

Header Information		measured depth (ft)	inclination (°)	azimuth (°)	true vertical depth (ft)	northing +N/-S (ft)	easting +E/-W (ft)
Operator Name	Great Western Oil & Gas Company LLC	0	0.00	0.00	0	0.00	0.00
		83	0.51	295.02	83	0.16	-0.33
Operator Number	10110	170	0.42	270.16	170	0.32	-1.00
		260	0.24	188.28	260	0.14	-1.36
Well Name and Number	Tollway LC 24-372HNX	353	0.48	114.62	353	-0.22	-1.04
		442	0.41	145.21	442	-0.64	-0.51
API Number (if available)	05-001-10448	532	0.39	322.32	532	-0.66	-0.52
		622	0.70	250.85	622	-0.60	-1.22
Location: QQ SEC TWP RGE	NWSW Sec 7 1S 67W	712	1.34	225.15	712	-1.52	-2.49
		802	1.92	217.24	802	-3.46	-4.15
Citing Type: Planned or Actual	Actual	892	2.28	217.17	892	-6.09	-6.14
		982	1.99	198.89	982	-8.99	-7.73
Deviation Indicator	Horizontal	1072	1.74	196.52	1072	-11.78	-8.62
		1162	2.09	200.12	1162	-14.63	-9.58
North Reference	True	1252	1.88	193.49	1252	-17.61	-10.49
		1342	1.89	195.08	1342	-20.48	-11.22
Grid Type		1432	1.71	203.79	1432	-23.14	-12.15
		1522	1.62	201.15	1522	-25.55	-13.15
		1611	1.32	191.19	1611	-27.73	-13.80
		1701	1.12	190.08	1700	-29.62	-14.15
		1791	0.49	209.28	1790	-30.82	-14.50
		1881	0.27	163.58	1880	-31.36	-14.62
		1971	0.38	47.09	1970	-31.36	-14.35
		1979	0.40	17.75	1978	-31.31	-14.32
		2035	0.40	17.75	2034	-30.94	-14.20