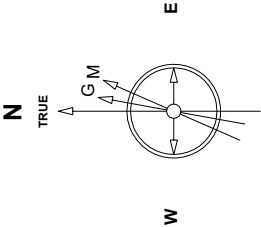


Great Western Operating Company, LLC

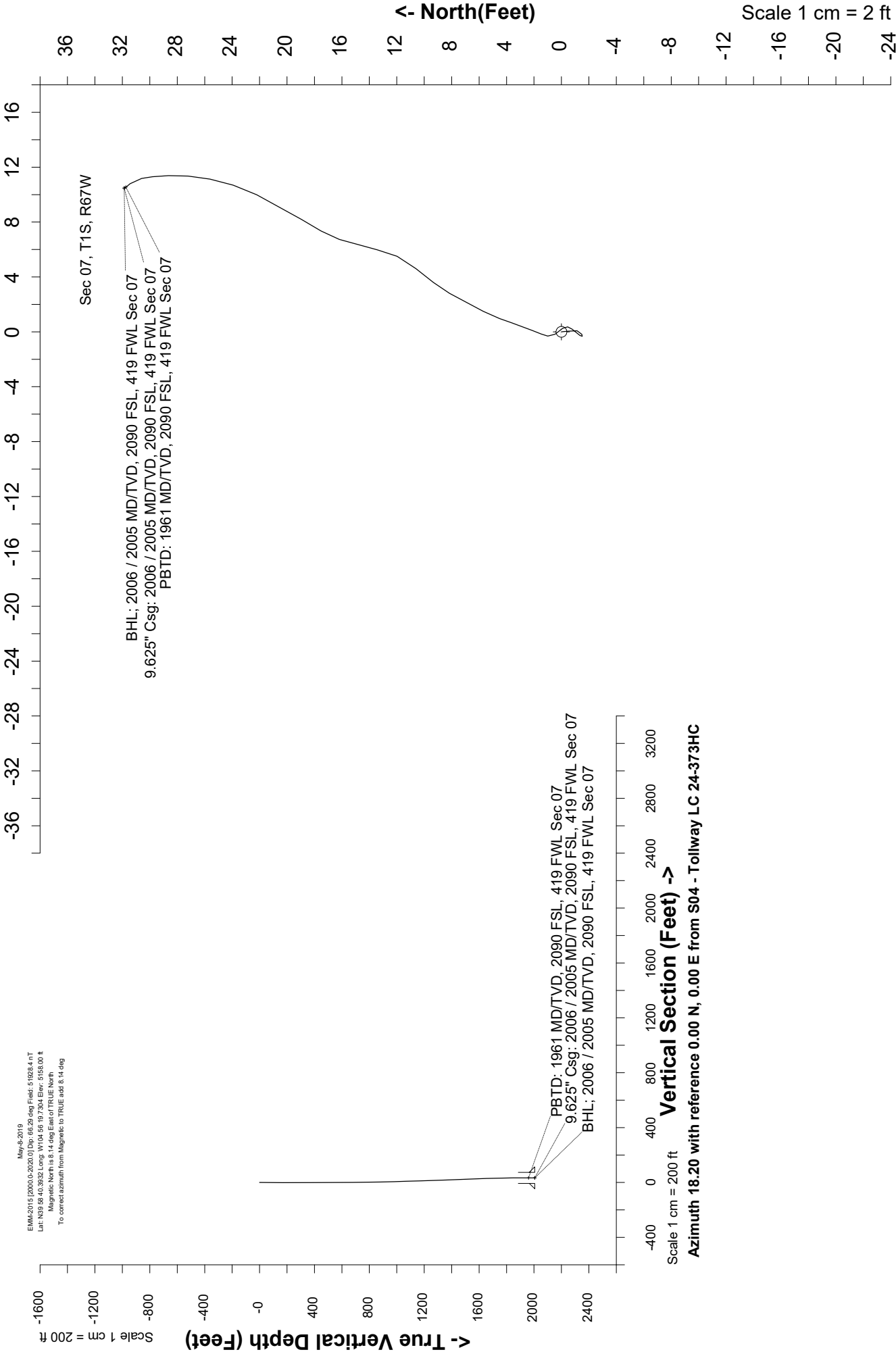
Location	Colorado	Slot	S04 - Tollway LC 24-373HC
Field	Wattensburg	Well	Tollway LC 24-373HC
Installation	Tollway	Wellbore	Tollway LC 24-373HC (AWB)



May 4, 2019  
EMA-2015 (2000.0-2020.0) Dep. 68.29 deg Field: 51826.4 nT  
Lat: N39 58.40.3032 Long. W104 56 19 7.304 Elev: 5155.00 ft  
Magnetic North is 8.14 deg East of TRUE North  
To correct azimuth from Magnetic to TRUE add 8.14 deg

Scale 1 cm = 2 ft

East (Feet) ->



Header Information		measured depth (ft)	inclination (°)	azimuth (°)	true vertical depth (ft)	northing +N/-S (ft)	easting +E/-W (ft)
	Operator Name	0	0.00	0.00	0	0.00	0.00
	Great Western Oil & Gas Company LLC	83	0.64	174.15	83	-0.46	0.05
	Operator Number	169	0.27	185.98	169	-1.14	0.08
	10110	260	0.34	241.18	260	-1.48	-0.18
	Well Name and Number	352	0.39	30.14	352	-1.34	-0.27
	Tollway LC 24-373HC	442	0.55	45.27	442	-0.78	0.19
	API Number (if available)	532	0.57	327.05	532	-0.10	0.26
	05-001-10443	622	0.34	313.91	622	0.46	-0.18
	Location: QQ SEC TWP RGE	712	0.45	10.49	712	1.00	-0.31
	NWSW Sec 7 1S 67W	802	1.09	23.68	802	2.13	0.10
	Citing Type: Planned or Actual	892	0.96	16.31	892	3.64	0.66
	Actual	981	1.91	24.87	981	5.70	1.49
	Deviation Indicator	1071	1.66	31.77	1071	8.17	2.81
	Horizontal	1161	2.21	39.85	1161	10.61	4.61
	North Reference	1251	1.92	9.94	1251	13.42	5.98
	True	1341	1.74	21.32	1341	16.18	6.74
	Grid Type	1431	2.28	32.60	1431	18.96	8.20
		1521	2.45	25.58	1521	22.21	9.99
		1611	2.17	10.45	1611	25.62	11.13
		1701	1.71	357.71	1700	28.64	11.39
		1791	0.81	346.04	1790	30.59	11.18
		1881	0.42	314.59	1880	31.44	10.79
		1949	0.18	331.67	1948	31.71	10.56
		2006	0.18	331.67	2005	31.87	10.48