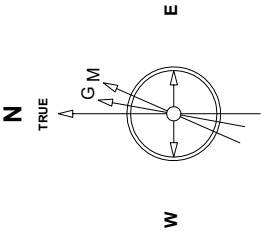


Great Western Operating Company, LLC

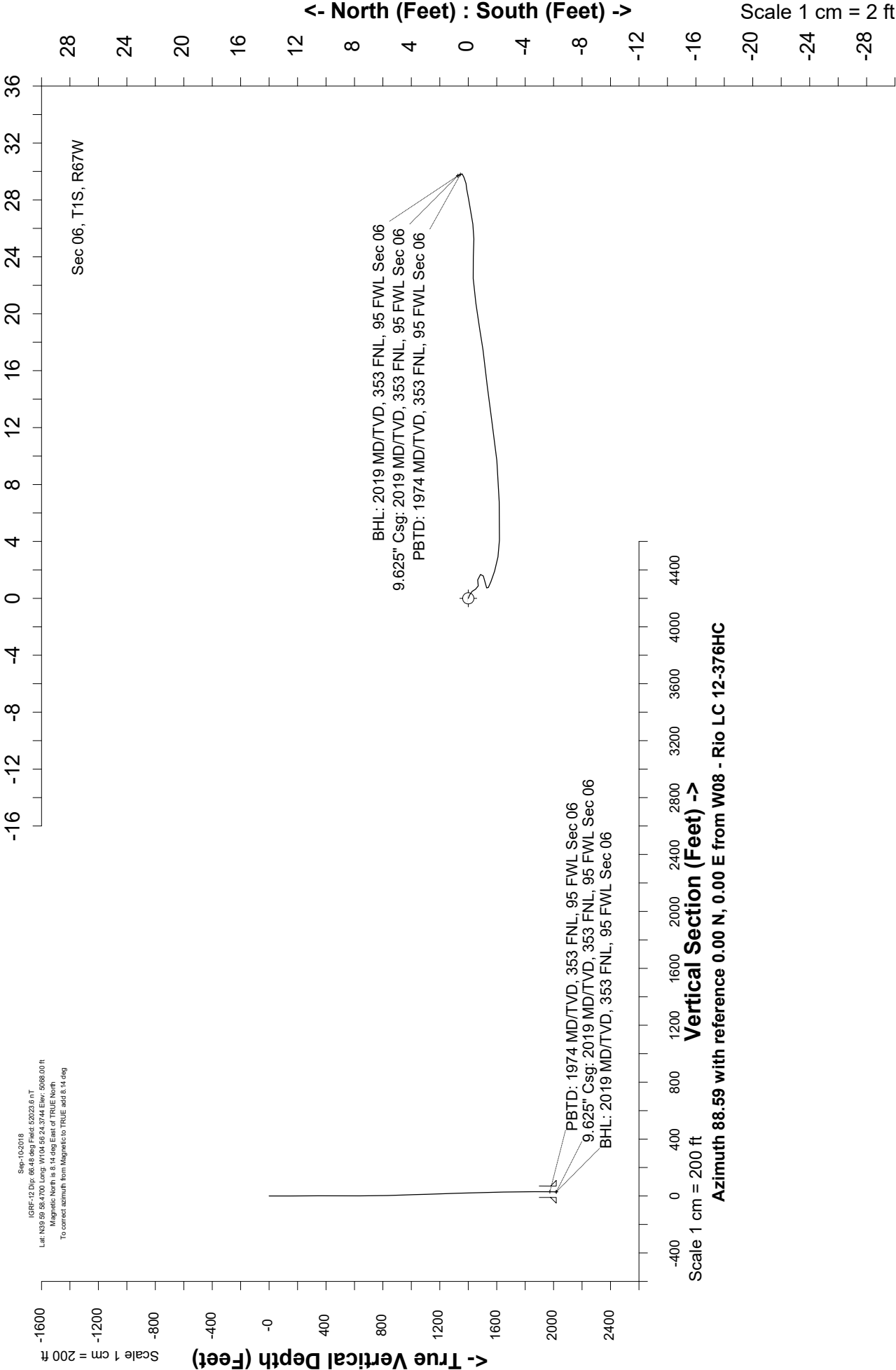
Location	Colorado	Slot	W08 - Rio LC 12-376HC
Field	Wattenburg	Well	Rio LC 12-376HC
Installation	Rio	Wellbore	Rio LC 12-376HC - Surface Hole



Sept-10-2018
IGRF-12 Dec 68.43 deg Field: 52023.6 nT
Lat: N39 59 58.4700 Long: W104 56 24.3744 Elev: 5098.00 ft
Magnetic North is 8.14 deg East of TRUE North
To correct azimuth from Magnetic to TRUE add 8.14 deg

Scale 1 cm = 2 ft

East (Feet) ->



Vertical Section (Feet) ->

Scale 1 cm = 200 ft

North (Feet) : South (Feet) ->

Scale 1 cm = 2 ft

Header Information	measured depth (ft)	inclination (°)	azimuth (°)	true vertical depth (ft)	northing +N/-S (ft)	easting +E/-W (ft)
Operator Name	0	0.00	0.00	0	0	0
Great Western Oil & Gas Company LLC	84	0.35	111.93	84	-0.1	0.24
Operator Number	148	0.22	145.41	148	-0.27	0.49
10110	210	0.31	148.31	210	-0.51	0.64
Well Name and Number	300	0.13	82.92	300	-0.71	0.87
Rio LC 12-376HC	390	0.40	84.07	390	-0.66	1.29
API Number (if available)	480	0.31	162.29	480	-0.86	1.67
05-001-10458	570	0.79	261.34	570	-1.19	1.14
Location: QQ SEC TWP RGE	660	0.35	119.31	660	-1.41	0.76
NWNW Sec 6 1S 67W	750	1.23	108.5	750	-1.85	1.92
Citing Type: Planned or Actual	839	1.63	91.54	839	-2.19	4.09
Actual	929	1.80	88.11	929	-2.18	6.78
Deviation Indicator	1019	1.89	85.3	1019	-2.01	9.67
Horizontal ▼	1109	1.63	79.67	1109	-1.66	12.41
North Reference	1198	1.58	85.65	1198	-1.34	14.88
True ▼	1288	1.76	81.08	1288	-1.03	17.48
Grid Type	1378	2.42	81.43	1378	-0.53	20.73
▼	1468	1.76	94.17	1468	-0.35	23.98
	1558	1.19	82.31	1558	-0.33	26.29
	1648	1.1	78.35	1648	-0.03	28.06
	1738	0.31	86.97	1738	0.16	29.15
	1828	0.31	56.99	1828	0.31	29.6
	1918	0.04	98.04	1918	0.43	29.83
	1971	0.26	332.62	1971	0.54	29.8
	2019	0.26	332.62	2019	0.73	29.7