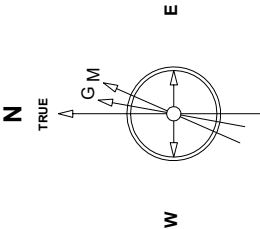


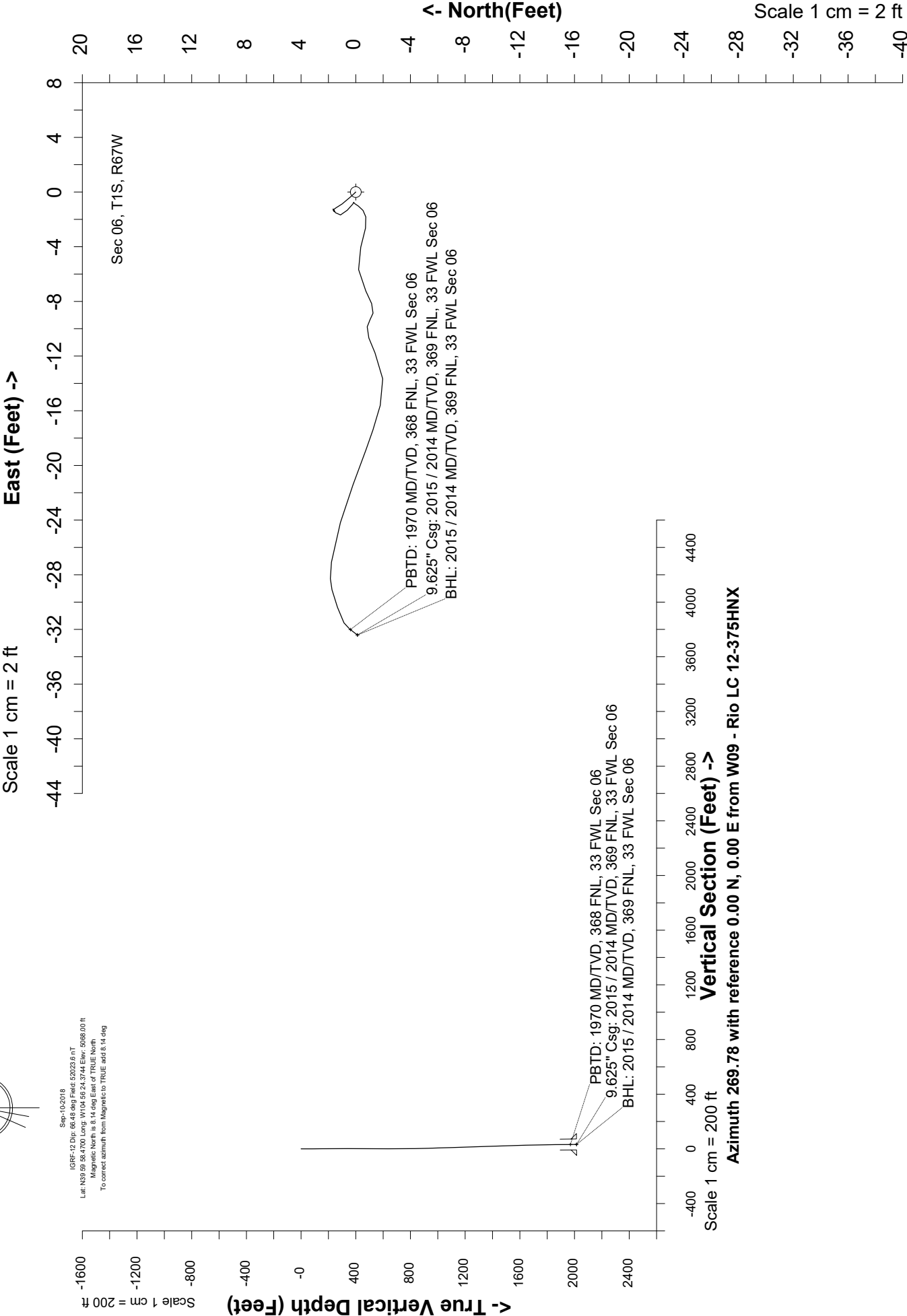
Great Western Operating Company, LLC

Location	Colorado	Slot	W09 - Rio LC 12-375HNX
Field	Wattenburg	Well	Rio LC 12-375HNX
Installation	Rio	Wellbore	Rio LC 12-375HNX - Surface Hole



Sept-10-2018
IGRF-12 Dec 69.43 deg Field 52023.6 nT
Lat: N39 59 58.4700 Long: W104 56 24.3744 Elev: 5098.00 ft
Magnetic North is 8.14 deg East of TRUE North
To correct azimuth from Magnetic to TRUE add 8.14 deg

Scale 1 cm = 2 ft



Scale 1 cm = 200 ft

Vertical Section (Feet) ->

Azimuth 269.78 with reference 0.00 N, 0.00 E from W09 - Rio LC 12-375HNX

Header Information	measured depth (ft)	inclination (°)	azimuth (°)	true vertical depth (ft)	northing +N/-S (ft)	easting +E/-W (ft)
Operator Name	0	0.00	0.00	0	0	0
Great Western Oil & Gas Company LLC	84	0.77	316.96	84	0.41	-0.39
Operator Number	148	0.60	324.48	148	1	-0.87
10110	210	0.43	332.25	210	1.47	-1.17
Well Name and Number	300	0.24	209.38	300	1.6	-1.42
Rio LC 12-375HNX	390	0.35	50.17	390	1.62	-1.3
API Number (if available)	480	0.66	234.05	480	1.49	-1.51
05-001-10459	570	1.05	133.13	570	0.62	-1.33
Location: QQ SEC TWP RGE	660	0.12	348.22	660	0.15	-0.75
NWNW Sec 6 1S 67W	750	0.63	211.22	750	-0.18	-1.02
Citing Type: Planned or Actual	839	0.72	256.38	839	-0.73	-1.82
Actual	929	2.22	286.73	929	-0.36	-4.04
Deviation Indicator	1019	2.25	240.36	1019	-0.74	-7.24
Horizontal ▼	1109	1.02	314.85	1109	-1.04	-9.35
North Reference	1198	2.67	243.64	1198	-1.41	-11.77
True ▼	1288	2.6	285.52	1288	-1.79	-15.61
Grid Type	1378	1.76	291.17	1378	-0.75	-18.87
▼	1468	1.71	289.44	1468	0.2	-21.42
	1558	2	287.75	1558	1.13	-24.18
	1648	1.8	277.19	1648	1.78	-27.08
	1738	0.83	250.35	1737	1.74	-29.1
	1828	0.88	254.4	1827	1.33	-30.38
	1918	0.7	239.02	1917	0.87	-31.51
	1967	0.83	217.31	1966	0.43	-31.99
	2015	0.83	217.31	2014	-0.12	-32.41