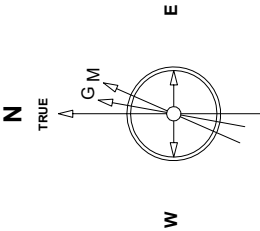


Great Western Operating Company, LLC

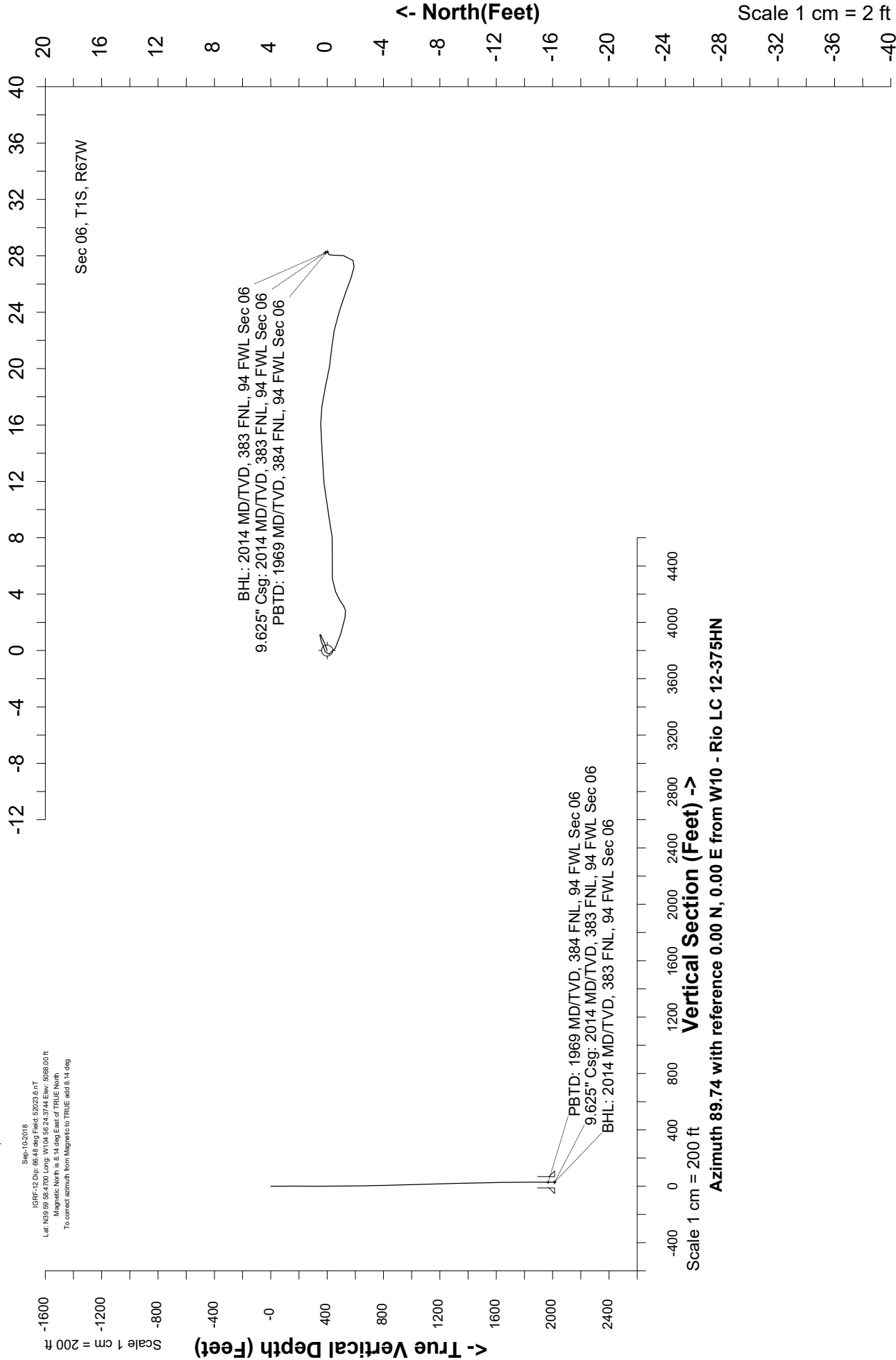


Sept-10-2018
IGRF-12 Dec 68.43 deg Field 52023.6 nT
Lat: N19 59 58.4700 Long: W104 56 24.3744 Elev: 5098.00 ft
Magnetic North is 8.14 deg East of TRUE North
To correct azimuth from Magnetic to TRUE add 8.14 deg

Scale 1 cm = 2 ft

Scale 1 cm = 2 ft

Scale 1 cm = 200 ft



Scale 1 cm = 200 ft

Vertical Section (Feet) ->

Azimuth 89.74 with reference 0.00 N, 0.00 E from W10 - Rio LC 12-375HN

Header Information	measured depth (ft)	inclination (°)	azimuth (°)	true vertical depth (ft)	northing +N/-S (ft)	easting +E/-W (ft)
Operator Name	0	0.00	0.00	0	0	0
Great Western Oil & Gas Company LLC	84	0.78	70.38	84	0.19	0.54
Operator Number	148	0.41	54.94	148	0.47	1.14
10110	210	1.27	254.76	210	0.42	0.65
Well Name and Number	300	0.35	170.88	300	-0.12	-0.26
Rio LC 12-375HN	390	0.55	115.77	390	-0.58	0.17
API Number (if available)	480	0.82	107.67	480	-0.96	1.17
05-001-10469	570	0.74	101.52	570	-1.27	2.35
Location: QQ SEC TWP RGE	660	0.44	49.15	660	-1.16	3.19
NWNW Sec 6 1S 67W	750	1.01	64.76	750	-0.6	4.16
Citing Type: Planned or Actual	839	2.09	93.52	839	-0.36	6.49
Actual	929	1.64	75.78	929	-0.15	9.38
Deviation Indicator	1019	1.55	87.8	1019	0.22	11.84
Horizontal ▼	1109	1.18	84.66	1109	0.35	13.98
North Reference	1198	1.48	89.09	1198	0.45	16.05
True ▼	1288	2	103.15	1288	0.11	18.74
Grid Type	1378	1.53	93.86	1378	-0.32	21.47
▼	1468	1.93	108.22	1468	-0.88	24.1
	1558	1.24	110.92	1558	-1.7	26.45
	1648	0.47	55.18	1648	-1.84	27.67
	1738	0.6	5.43	1738	-1.16	28.01
	1828	0.41	357.62	1828	-0.37	28.04
	1918	0.27	96.77	1918	-0.07	28.24
	1966	0.2	327.56	1966	-0.01	28.31
	2014	0.2	327.56	2014	0.13	28.22