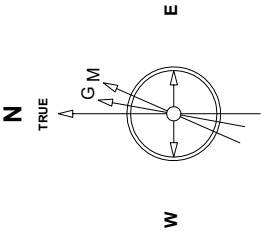


Great Western Operating Company, LLC

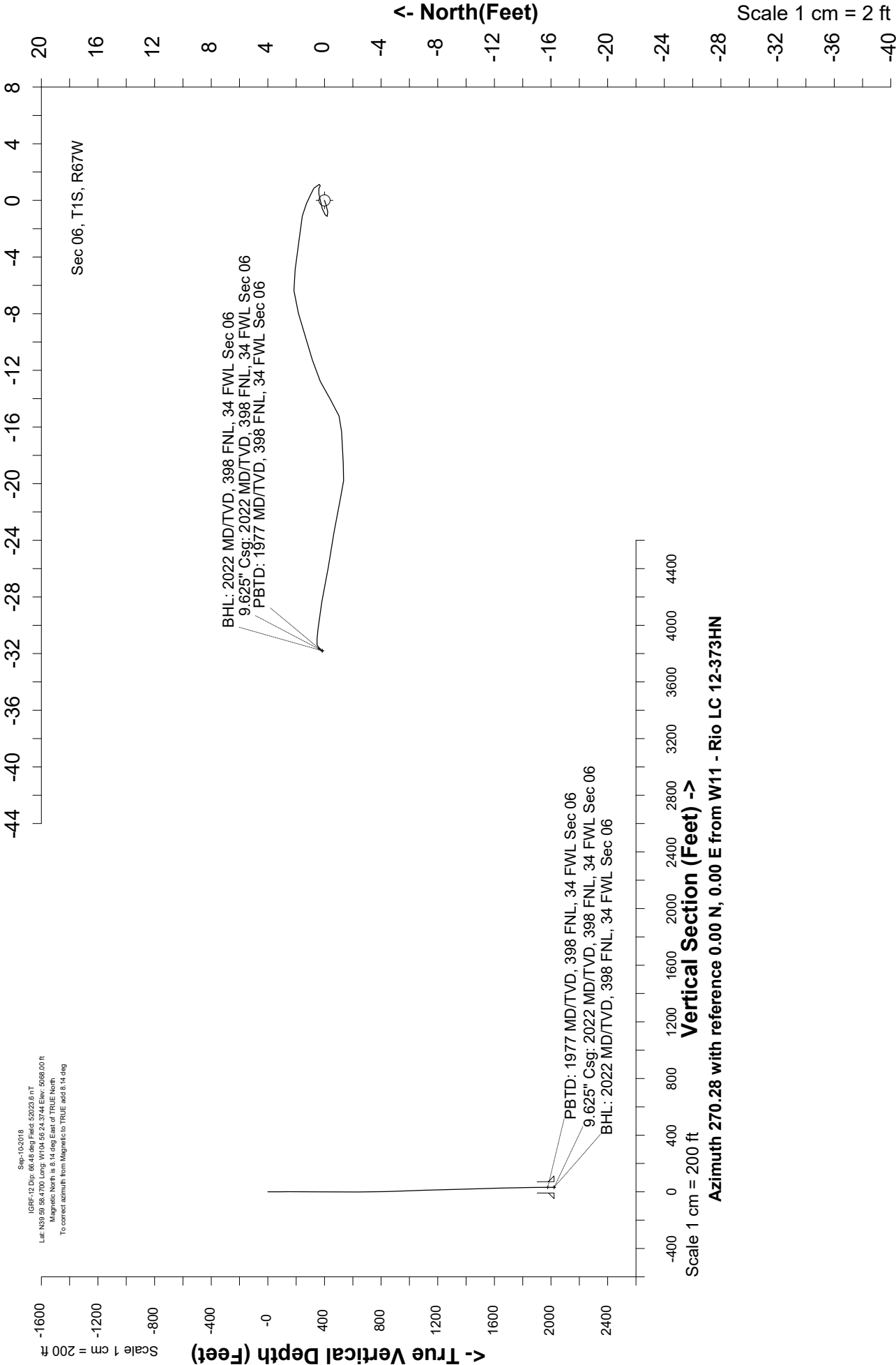
Location	Colorado	Slot	W11 - Rio LC 12-373HN
Field	Wattenburg	Well	Rio LC 12-373HN
Installation	Rio	Wellbore	Rio LC 12-373HN - Surface Hole



Sept-10-2018
IGRF-12 Dec 99.43 deg Field 52023.6 nT
Lat: N39 59 58.4700 Long: W104 56 24.3744 Elev: 5098.00 ft
Magnetic North is 8.14 deg East of TRUE North
To correct azimuth from Magnetic to TRUE add 8.14 deg

Scale 1 cm = 2 ft

East (Feet) ->



Scale 1 cm = 200 ft

Vertical Section (Feet) ->

Azimuth 270.28 with reference 0.00 N, 0.00 E from W11 - Rio LC 12-373HN

Header Information	measured depth (ft)	inclination (°)	azimuth (°)	true vertical depth (ft)	northing +N/-S (ft)	easting +E/-W (ft)
Operator Name	0	0.00	0.00	0	0	0
Great Western Oil & Gas Company LLC	84	0.41	250.58	84	-0.1	-0.28
Operator Number	148	0.57	260.20	148	-0.23	-0.81
10110	210	0.17	351.22	210	-0.19	-1.13
Well Name and Number	300	0.77	68.96	300	0.16	-0.59
Rio LC 12-373HN	390	0.62	86.65	390	0.4	0.46
API Number (if available)	480	0.20	149.72	480	0.3	1.03
05-001-10464	570	0.27	6.47	570	0.37	1.13
Location: QQ SEC TWP RGE	660	0.43	299.17	660	0.75	0.86
NWNW Sec 6 1S 67W	750	1.11	294.83	750	1.28	-0.23
Citing Type: Planned or Actual	839	1.55	273.57	839	1.71	-2.21
Actual	929	1.88	281.07	929	2.07	-4.87
Deviation Indicator	1019	2.20	252.74	1019	1.84	-7.97
Horizontal ▼	1109	2.18	253.81	1109	0.85	-11.26
North Reference	1198	1.83	235.62	1198	-0.42	-14.06
True ▼	1288	1.36	271.27	1288	-1.21	-16.32
Grid Type	1378	1.53	263.11	1378	-1.33	-18.58
▼	1468	1.71	285.17	1468	-1.12	-21.07
	1558	1.38	275.36	1558	-0.67	-23.44
	1648	1.8	282.06	1648	-0.27	-25.9
	1738	1.36	279.03	1738	0.19	-28.34
	1828	1.1	276.52	1828	0.46	-30.25
	1918	0.34	264.4	1918	0.53	-31.38
	1974	0.33	215.49	1974	0.38	-31.64
	2022	0.33	215.49	2022	0.16	-31.8