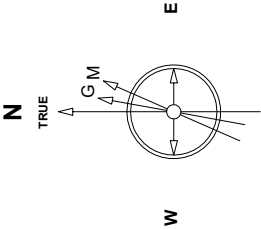


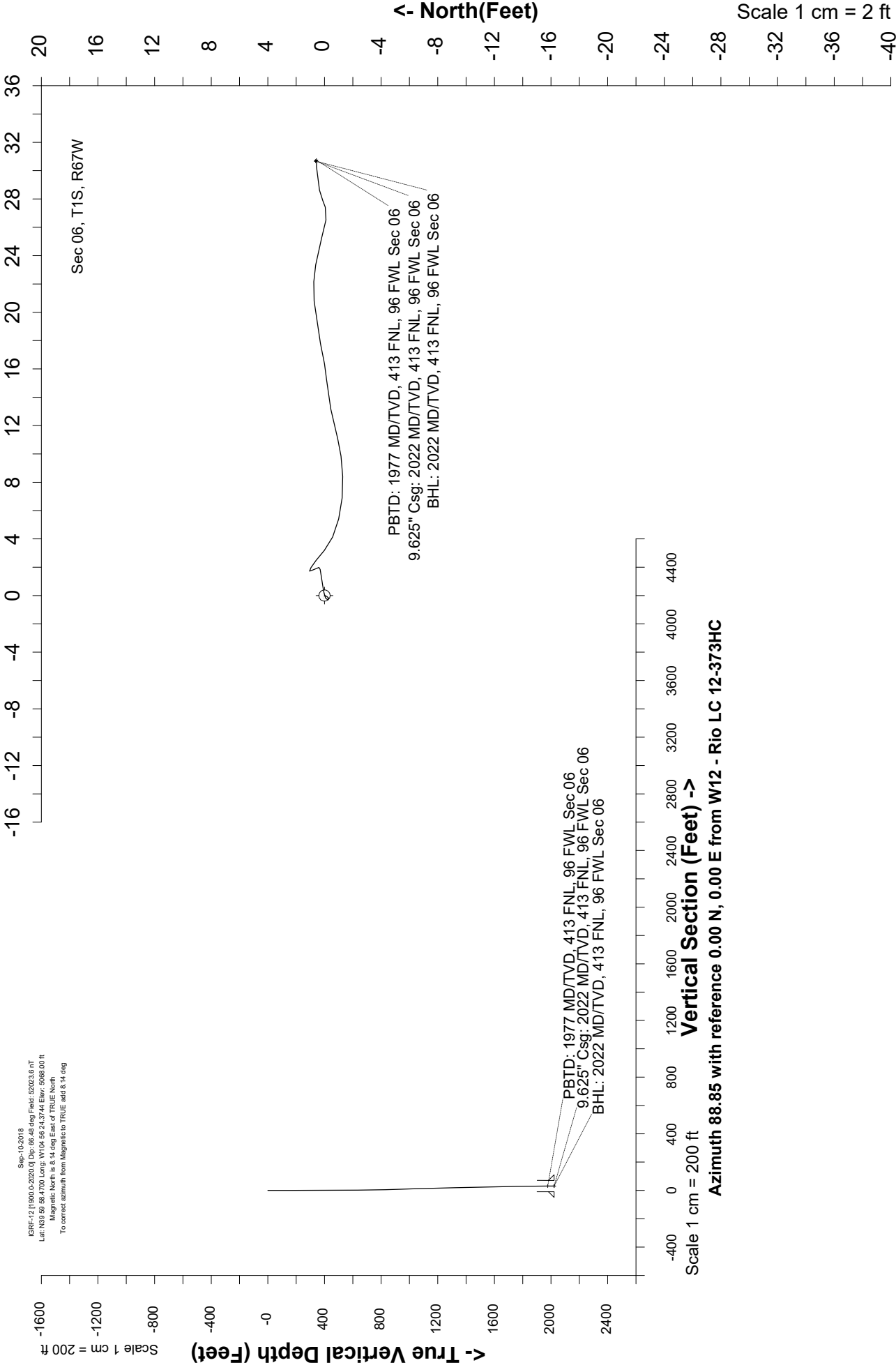
Great Western Operating Company, LLC

Location	Colorado	Slot	W12 - Rio LC 12-373HC
Field	Wattenburg	Well	Rio LC 12-373HC
Installation	Rio	Wellbore	Rio LC 12-373HC (AWB)



IGRF-12 (1900.0-2020.0) Dip: 66.48 deg Field: 52023.6 nT
Lat: N39.59 98.4700 Long: W104.56 24.3744 Elev: 5098.00 ft
Magnetic North is 8.14 deg East of TRUE North
To correct azimuth from Magnetic to TRUE add 8.14 deg

Scale 1 cm = 2 ft



Header Information	measured depth (ft)	inclination (°)	azimuth (°)	true vertical depth (ft)	northing +N/-S (ft)	easting +E/-W (ft)
Operator Name	0	0.00	0.00	0	0	0
Great Western Oil & Gas Company LLC	84	0.24	200.74	84	-0.16	-0.06
Operator Number	148	0.14	260.27	148	-0.3	-0.19
10110	210	0.20	342.99	210	-0.21	-0.29
Well Name and Number	300	0.84	79.13	300	0.06	0.31
Rio LC 12-373HC	390	0.64	83.7	390	0.24	1.46
API Number (if available)	480	0.13	18.06	480	0.39	1.99
05-001-10463	570	0.54	327.76	570	0.85	1.79
Location: QQ SEC TWP RGE	660	0.62	122.01	660	0.95	1.98
NWNW Sec 6 1S 67W	750	1.33	130.72	750	0.01	3.18
Citing Type: Planned or Actual	839	1.91	103.24	839	-1	5.41
Actual	929	1.96	87.72	929	-1.28	8.41
Deviation Indicator	1019	1.45	75.55	1019	-0.94	11.05
Horizontal ▼	1109	1.34	78.24	1109	-0.44	13.18
North Reference	1198	1.30	85.44	1198	-0.15	15.21
True ▼	1288	2.03	77.3	1288	0.28	17.78
Grid Type	1378	1.86	86.02	1378	0.73	20.79
▼	1468	1.42	101.06	1468	0.62	23.34
	1558	1.01	104.68	1558	0.21	25.21
	1648	0.71	101.15	1648	-0.1	26.52
	1738	0.49	66.49	1738	-0.06	27.42
	1828	1.13	73.37	1828	0.35	28.62
	1918	1.04	92.67	1918	0.57	30.29
	1974	0.11	300.13	1974	0.57	30.75
	2022	0.11	300.13	2022	0.62	30.67