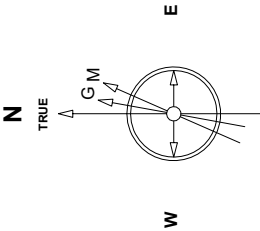


Great Western Operating Company, LLC

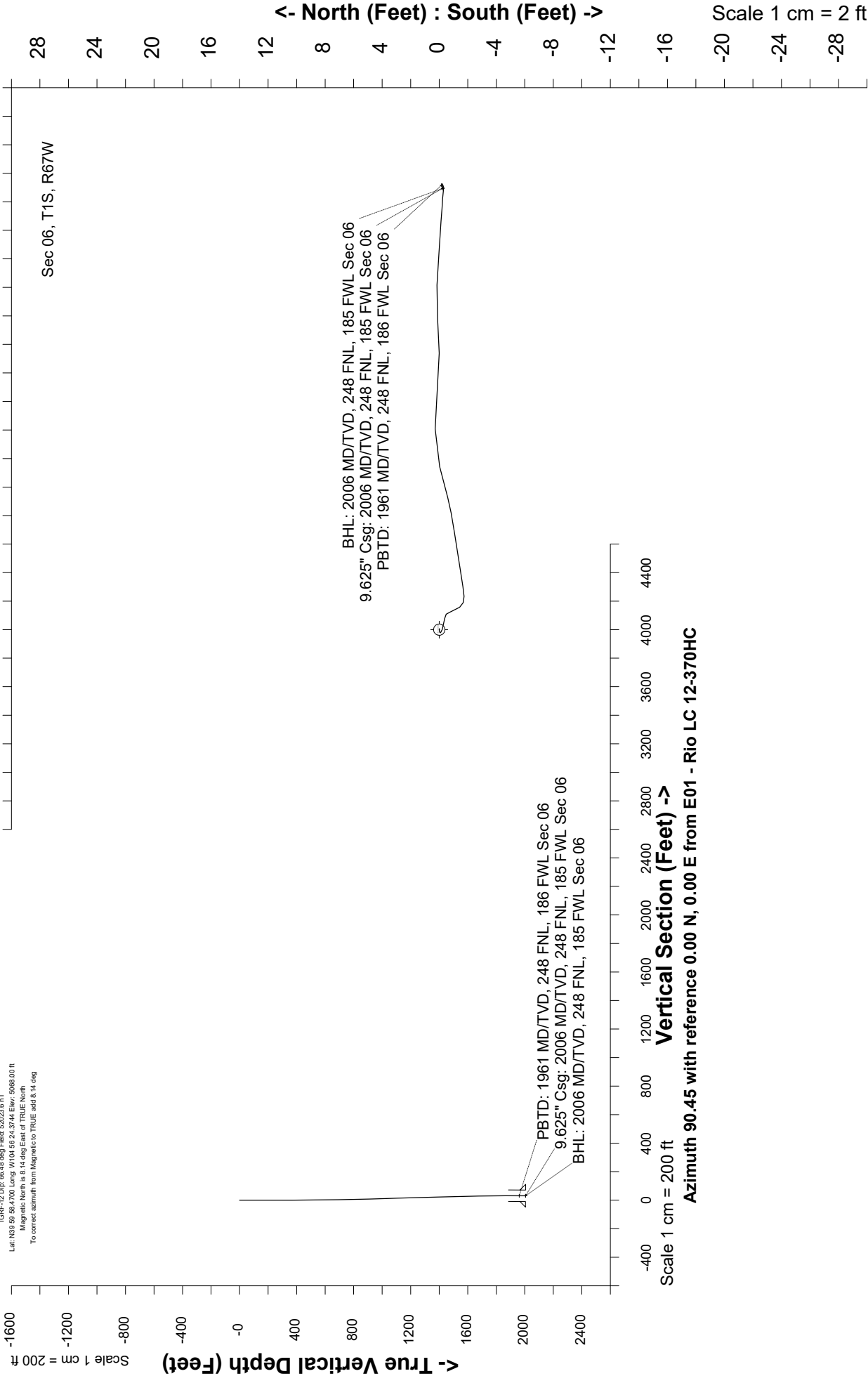
Location	Colorado	Slot	E01 - Rio LC 12-370HC
Field	Wattenburg	Well	Rio LC 12-370HC
Installation	Rio	Wellbore	Rio LC 12-370HC - Surface Hole



Sept-10-2018  
IGRF-12 Dec 99.43 deg Field 52023.6 nT  
Lat: N39 59 58.4700 Long: W104 56 24.3744 Elev: 5098.00 ft  
Magnetic North is 8.14 deg East of TRUE North  
To correct azimuth from Magnetic to TRUE add 8.14 deg

Scale 1 cm = 2 ft

East (Feet) ->



Header Information	measured depth (ft)	inclination (°)	azimuth (°)	true vertical depth (ft)	northing +N/-S (ft)	easting +E/-W (ft)
Operator Name	0	0.00	0.00	0	0	0
Great Western Oil & Gas Company LLC	84	0.09	98.04	84	-0.01	0.07
Operator Number	148	0.13	278.04	148	-0.01	0.04
10110	210	0.26	258.53	210	-0.02	-0.16
Well Name and Number	300	0.53	110.7	300	-0.21	0.02
Rio LC 12-370HC	390	0.48	94.08	390	-0.39	0.79
API Number (if available)	479	0.44	169.14	479	-0.75	1.23
05-001-10460	569	0.57	140.93	569	-1.44	1.57
Location: QQ SEC TWP RGE	659	0.62	85.12	659	-1.74	2.34
NWNW Sec 6 1S 67W	749	1.54	80.73	749	-1.5	4.02
Citing Type: Planned or Actual	839	2.02	81.34	839	-1.07	6.78
Actual	929	1.19	75.36	929	-0.6	9.25
Deviation Indicator	1019	1.67	75.36	1019	-0.03	11.43
Horizontal ▼	1109	1.76	90.75	1109	0.28	14.08
North Reference	1198	1.67	95.67	1198	0.14	16.74
True ▼	1288	1.71	90.57	1288	0	19.38
Grid Type	1378	1.49	83.54	1378	0.11	21.89
▼	1468	1.41	94.52	1468	0.16	24.15
	1557	1.54	92.59	1557	0.02	26.44
	1647	1.27	95.23	1647	-0.13	28.64
	1737	0.75	91.98	1737	-0.24	30.22
	1827	0.26	105.16	1827	-0.31	31.01
	1917	0.22	18.85	1917	-0.2	31.26
	1958	0.31	251.58	1958	-0.16	31.18
	2006	0.31	251.58	2006	-0.24	30.94