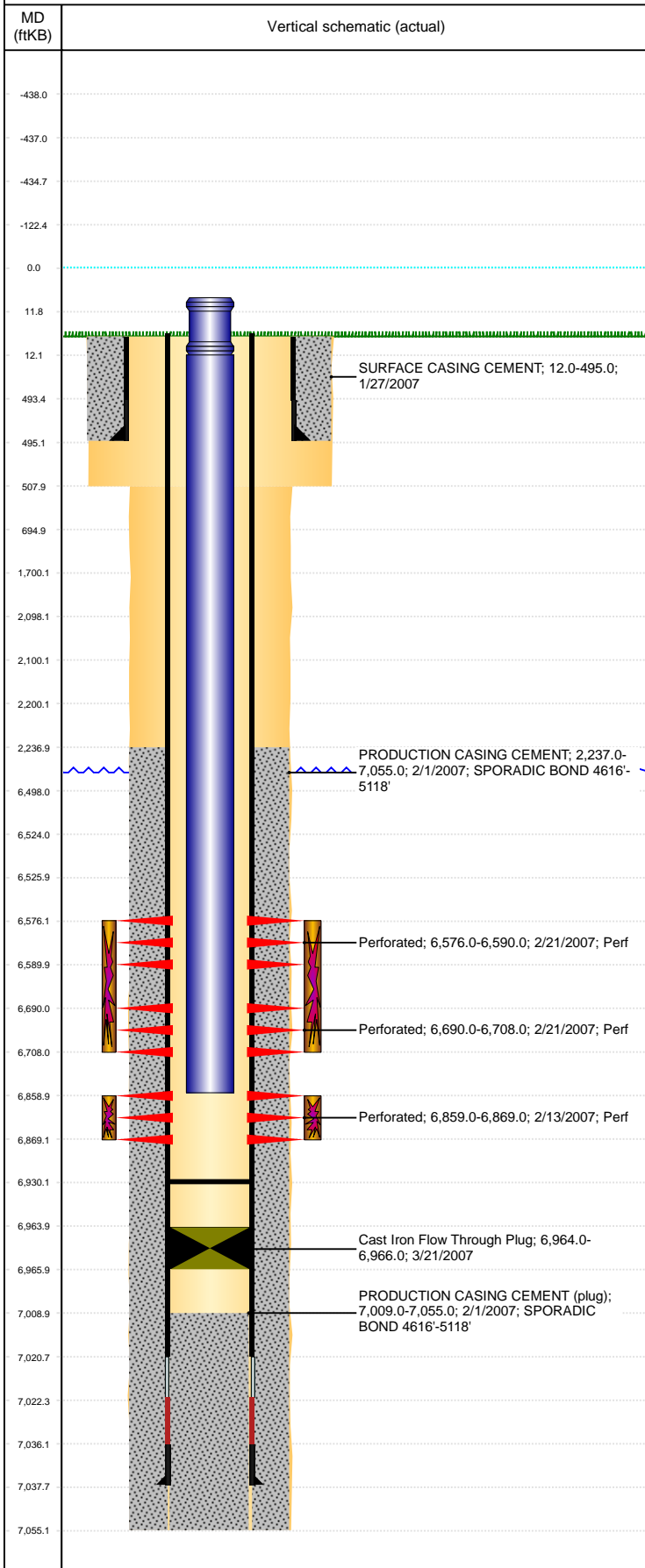


**Well Name: HAGEMEISTER USX AA07-12**

VERTICAL, ORIGINAL HOLE, 6/17/2020 3:17:41 PM



Well Header									
API 05-123-24344		Business Unit DJ BASIN			District 15		Well Config VERTICAL		
KB - GL / MSL (ft... 12.00		Spud Date 1/27/2007		P & A Date		Well Production Status PR		SoRT No	
Comment CIFP PUSHED TO 6964' 3/21/07									
Surface Location (Congressional)									
Qtr 3 NW	Qtr 4 SW	Section 7	Twtnsh 6	Twtnsh.... N	Range 63	Rng E/... W	Actual Latitude (°) 40.49902438	Actual Longitude (°) -104.48686698	
Wellbore Sections									
Section Des			Size (in)			Act Top, MD (ftKB)		Act Btm, MD (ftKB)	
SURFACE			12 1/4			12		508	
PRODUCTION			7 7/8			508		7,055	
Casing Strings									
Csg Des			Run Date		OD (in)	Wt/Len (lb/ft)	Grade	Top, MD (ftKB)	MD (ftKB)
Surface			1/27/2007		8 5/8	24.00	J-55	12.0	495.0
Production			1/31/2007		4 1/2	11.60	M-80	12.0	7,037.7
Cement									
Des					Start Date		Top (ftKB)		Btm (ftKB)
SURFACE CASING CEMENT					1/27/2007		12.0		495.0
PRODUCTION CASING CEMENT					2/1/2007		2,237.0		7,055.0
Zone Statuses									
Zone Name	Status Date	Status	Fluid Type		Job			Prod Method	
NIOBRARA	2/21/2007	PR	Gas		DRILLING/COMPLETION - ORIGINAL, 1/27/2007...				
CODELL	2/21/2007	PR	Gas		DRILLING/COMPLETION - ORIGINAL, 1/27/2007...				
Perforation Data									
Linked Zone		Bnch/Stg	Entered Shot Total		Top (ftKB)		Btm (ftKB)		Date
NIOBRARA, ORIGINAL HOLE		A	56		6,576.00		6,590.00		2/21/2007
NIOBRARA, ORIGINAL HOLE		B	72		6,690.00		6,708.00		2/21/2007
CODELL, ORIGINAL HOLE			40		6,859.00		6,869.00		2/13/2007
Stimulation Intervals									
Zone				Start Date		Top (ftKB)		Btm (ftKB)	
NIOBRARA, ORIGINAL HOLE				2/21/2007		6,576.0		6,708.0	
CODELL, ORIGINAL HOLE				2/21/2007		6,859.0		6,869.0	
Other In Hole									
Run Date		Des			Make		OD (in)	Top (ftKB)	Btm (ftKB)
3/21/2007		Cast Iron Flow Through Plug					3.99	6,964.0	6,966.0
12/11/2018		Plunger Lift					1 7/8		
Logs									
Date		Type				Top, MD (ftKB)		Btm, MD (ftKB)	
2/1/2007		COMPENSATED DENSITY				2,700.0		7,035.0	
2/1/2007		INDUCTION				495.0		7,055.0	
2/13/2007		CBL/CCL/GR				2,100.0		7,007.0	
11/15/2011		GYRO				12.0		6,800.0	
Plug Back Total Depths									
Date		Type		Com					Depth (ftKB)
3/22/2007		PLUG REMNANTS		DRILL PLUG AND PUSH TO 6964'					6,963.7
10/25/2011		FILL		TAG FILL					6,930.0