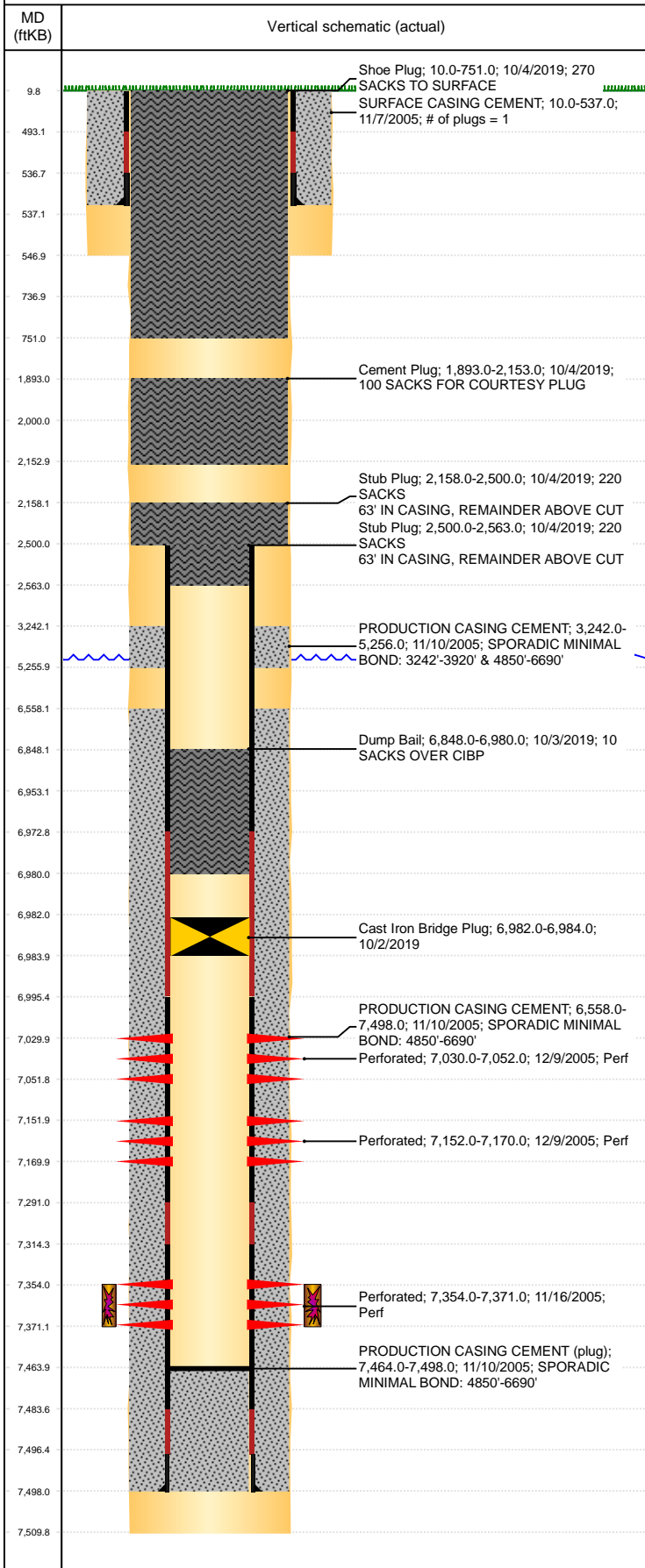


Well Name: BERNHARDT J31-19

VERTICAL, ORIGINAL HOLE, 6/17/2020 9:27:46 AM



Well Header									
API 05-123-23226			Business Unit DJ BASIN			District 15		Well Config VERTICAL	
KB - GL / MSL (ft... 10.00		Spud Date 11/7/2005		P & A Date 2/10/2020		Well Production Status PA			SoRT Yes
Comment poor Sx bond									
Surface Location (Congressional)									
Qtr 3 SE	Qtr 4 NW	Section 31	Twnshp 5	Twnsh... N	Range 66	Rng E/... W	Actual Latitude (°) 40.35945363		Actual Longitude (°) -104.82684182
Wellbore Sections									
Section Des			Size (in)			Act Top, MD (ftKB)		Act Btm, MD (ftKB)	
SURFACE			12 1/4			10		547	
PRODUCTION			7 7/8			547		7,510	
Casing Strings									
Csg Des			Run Date		OD (in)	Wt/Len (lb/ft)	Grade	Top, MD (ftKB)	MD (ftKB)
Surface			11/7/2005		8 5/8	24.00	J-55	9.8	537.0
Production			11/10/2005		4 1/2	11.60	M-80	10.0	7,498.0
Cement									
Des					Start Date		Top (ftKB)		Btm (ftKB)
SURFACE CASING CEMENT					11/7/2005		10.0		537.0
PRODUCTION CASING CEMENT					11/10/2005		3,242.0		5,256.0
PRODUCTION CASING CEMENT					11/10/2005		6,558.0		7,498.0
Dump Bail					10/3/2019		6,848.0		6,980.0
Stub Plug					10/4/2019		2,500.0		2,563.0
Stub Plug					10/4/2019		2,158.0		2,500.0
Cement Plug					10/4/2019		1,893.0		2,153.0
Shoe Plug					10/4/2019		10.0		751.0
Zone Statuses									
Zone Name		Status Date	Status	Fluid Type	Job			Prod Method	
CODELL		6/13/2017	SI		PLUG AND ABANDON, 10/2/2019 00:00				
CODELL		10/7/2019	P&A						
NIOBRARA		6/13/2017	SI		PLUG AND ABANDON, 10/2/2019 00:00				
NIOBRARA		10/7/2019	P&A						
Perforation Data									
Linked Zone			Bnch/Stg	Entered Shot Total	Top (ftKB)		Btm (ftKB)		Date
NIOBRARA, ORIGINAL HOLE			A	132	7,030.00		7,052.00		12/9/2005
NIOBRARA, ORIGINAL HOLE			B	108	7,152.00		7,170.00		12/9/2005
CODELL, ORIGINAL HOLE				68	7,354.00		7,371.00		11/16/2005
Stimulation Intervals									
Zone				Start Date		Top (ftKB)		Btm (ftKB)	
NIOBRARA, ORIGINAL HOLE				12/9/2005		7,030.0		7,170.0	
CODELL, ORIGINAL HOLE				12/9/2005		7,354.0		7,371.0	
Other In Hole									
Run Date		Des			Make		OD (in)	Top (ftKB)	Btm (ftKB)
10/2/2019		Cast Iron Bridge Plug					3.99	6,982.0	6,984.0
Logs									
Date		Type					Top, MD (ftKB)		Btm, MD (ftKB)
11/10/2005		COMPENSATED DENSITY					3,000.0		7,513.0
11/10/2005		INDUCTION					537.0		7,513.0
11/16/2005		CBL/CCL/GR					3,100.0		7,464.0
Plug Back Total Depths									
Date		Type			Com				Depth (ftKB)
11/10/2005		LATCH DOWN COLLAR			LATCH DOWN COLLAR				7,484.0
11/16/2005		FILL			DEPTH LOGGER				7,464.0