



Crestone Peak Resources

Schlumberger

Plan 0

Borehole:	Well:	Field:	Structure:
Original Hole	Sunset 4-65 21-22 4BH	CO, Arapahoe County (NAD 83 CZ)	Crestone Peak 21-04S-65W (Grande South Pad)

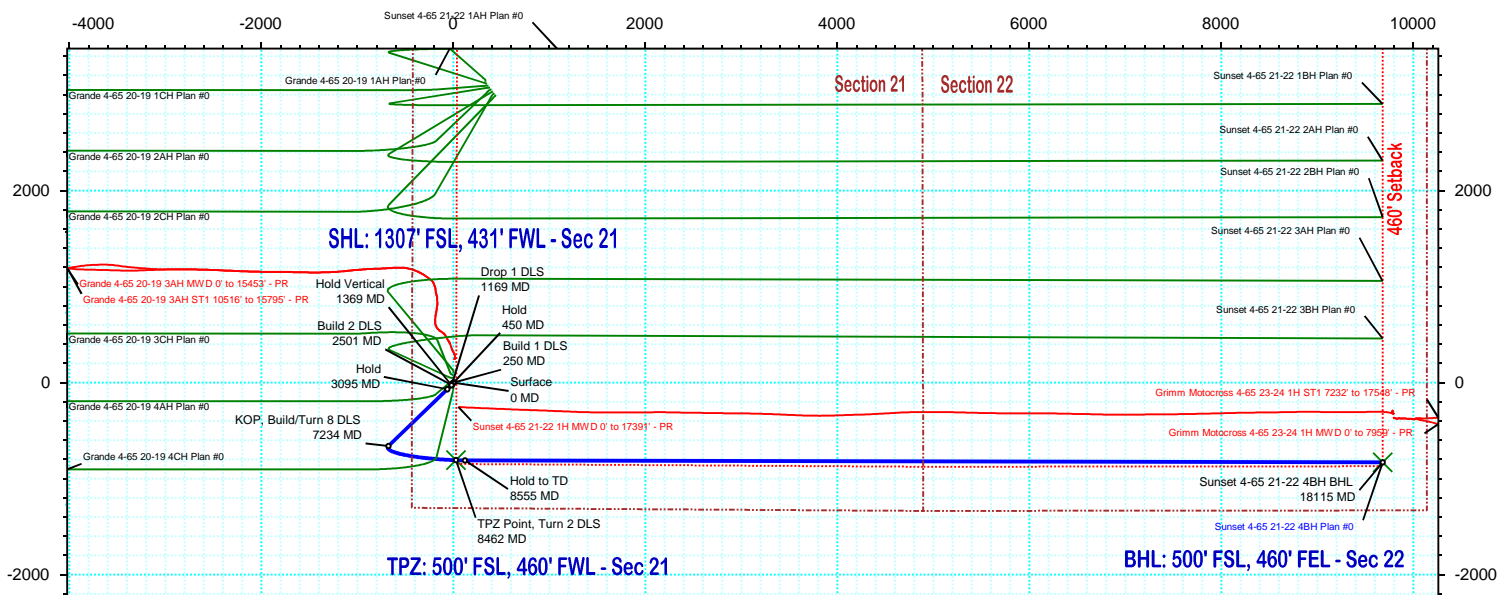
Gravity & Magnetic Parameters			Surface Location			Miscellaneous		
Model:	HDGM 2020	Dip: 66.341°	Date:	20-May-2020	Lat: N 39 41 8.26	Northings:	1675668.69ftUS	Grid Conv: 0.5191°
MagDec:	8.58°	FS: 51552.874nT	Gravity FS:	998.916mgn (9.80665 Based)	Lon: W 104 40 36.88	Easting:	3231647.4ftUS	Scale Fact: 0.9999879
						Slot:	Sunset 4-65 21-22 4BH	TVD Ref: KB 28ft(5647.2ft above MSL)
						Plan:	Sunset 4-65 21-22 4BH Plan #0	

Proposal

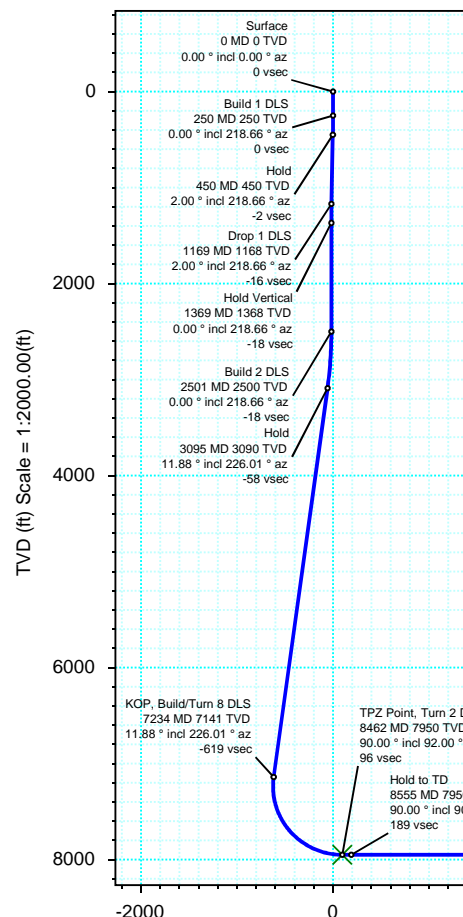
EW (ft) Scale = 1:2000.00(ft)



True North
Tot Corr (M->T 8.580°)
Mag Dec (8.580°)
Grid Conv (0.519°)



NS (ft) Scale = 1:2000.00(ft)



Surface Location														
Northing:		1675668.68691479	Easting:		3231647.40268598	Latitude:		N 39 41 8.26	Longitude:		W 104 40 36.88	VSec Azimuth:		94.90
Target Description		Grid Coord							Local Coord					
Target Name		Latitude	Longitude	Northing	Easting	TVD	VSec	N(+)/S(-)	E(+)/W(-)					
Grande Pad Sec 21-22		N 39 41 39.04	W 104 40 32.41	1678785.81	3231968.40	5647.20	81.73	3114.13	349.23					
Grande Pad Sec 21-22 - 460' SB		N 39 41 39.04	W 104 40 32.41	1678785.81	3231968.40	5647.20	81.73	3114.13	349.23					
Sunset 4-65 21-22 4BH TPZ		N 39 41 0.29	W 104 40 36.53	1674862.12	3231681.45	7950.00	95.62	-806.85	26.74					
Sunset 4-65 21-22 4BH BHL		N 39 41 0.04	W 104 38 33.07	1674925.91	3241333.85	7950.00	9715.02	-830.52	9679.46					

Critical Points									
Critical Point	MD	INCL	AZIM	TVD	VSEC	N(+)/S(-)	E(+)/W(-)	DLS	
Surface	0.00	0.00	0.00	0.00	0.00	0.00	0.00		
Build 1 DLS	250.00	0.00	218.66	250.00	0.00	0.00	0.00	0.00	
Hold	449.67	2.00	218.66	449.63	-1.93	-2.72	-2.17	1.00	
Drop 1 DLS	1168.84	2.00	218.66	1168.37	-15.86	-22.28	-17.83	0.00	
Hold Vertical	1368.52	0.00	218.66	1368.00	-17.79	-25.00	-20.00	1.00	
Build 2 DLS	2500.52	0.00	218.66	2500.00	-17.79	-25.00	-20.00	0.00	
Hold	3094.68	11.88	226.01	3089.91	-58.15	-67.64	-64.17	2.00	
KOP, Build/Turn 8 DLS	7234.04	11.88	226.01	7140.56	-618.51	-659.68	-677.38	0.00	
TPZ Point, Turn 2 DLS	8461.85	90.00	92.00	7950.00	95.62	-806.85	26.74	8.00	
Hold to TD	8555.28	90.00	90.13	7950.00	188.83	-808.59	120.15	2.00	
Sunset 4-65 21-22 4BH BHL	18114.62	90.00	90.13	7950.00	9715.02	-830.52	9679.46	0.00	

Vertical Section (ft) Azim = 94.90° Scale = 1:2000.00(ft) Origin = 0N/-S, 0E/-W

Sunset 4-65 21-22 4BH Plan #0 Proposal Geodetic Report

(Def Plan)

Report Date: May 22, 2020 - 02:34 PM
Client: Crestone Peak Resources
Field: CO, Arapahoe County (NAD 83 CZ)
Structure / Slot: Crestone Peak 21-04S-65W (Grande South Pad) / Sunset 4-65 21-22 4BH
Well: Sunset 4-65 21-22 4BH
Borehole: Original Hole
UWI / API#: Unknown / Unknown
Survey Name: Sunset 4-65 21-22 4BH Plan #0
Survey Date: March 19, 2020
Tort / AHD / DDI / ERD Ratio: 115.970 ° / 11354.682 ft / 6.477 / 1.428
Coordinate Reference System: NAD83 Colorado State Plane, Central Zone, US Feet
Location Lat / Long: N 39° 41' 8.26440", W 104° 40' 36.87600"
Location Grid N/E Y/X: N 1675668.687 ftUS, E 3231647.403 ftUS
CRS Grid Convergence Angle: 0.5191 °
Grid Scale Factor: 0.9999879
Version / Patch: 2.10.810.1

Survey / DLS Computation: Minimum Curvature / Lubinski
Vertical Section Azimuth: 94.904 ° (True North)
Vertical Section Origin: 0.000 ft, 0.000 ft
TVD Reference Datum: KB 28ft
TVD Reference Elevation: 5647.200 ft above MSL
Seabed / Ground Elevation: 5619.200 ft above MSL
Magnetic Declination: 8.580 °
Total Gravity Field Strength: 998.9165mgn (9.80665 Based)
Gravity Model: GARM
Total Magnetic Field Strength: 51552.874 nT
Magnetic Dip Angle: 66.341 °
Declination Date: May 20, 2020
Magnetic Declination Model: HDGM 2020
North Reference: True North
Grid Convergence Used: 0.0000 °
Total Corr Mag North→True North: 8.5797 °
Local Coord Referenced To: Well Head

Comments	MD (ft)	Incl (°)	Azim True (°)	TVD (ft)	VSEC (ft)	NS (ft)	EW (ft)	DLS (°/100ft)	Northing (ftUS)	Easting (ftUS)	Latitude (°)	Longitude (°)
Surface	0.00	0.00	0.00	0.00	0.00	0.00	0.00	N/A	1675668.69	3231647.40	39.685629	-104.676910
	100.00	0.00	218.66	100.00	0.00	0.00	0.00	0.00	1675668.69	3231647.40	39.685629	-104.676910
	200.00	0.00	218.66	200.00	0.00	0.00	0.00	0.00	1675668.69	3231647.40	39.685629	-104.676910
Build 1 DLS	250.00	0.00	218.66	250.00	0.00	0.00	0.00	0.00	1675668.69	3231647.40	39.685629	-104.676910
	300.00	0.50	218.66	300.00	-0.12	-0.17	-0.14	1.00	1675668.52	3231647.27	39.685629	-104.676910
	400.00	1.50	218.66	399.98	-1.09	-1.53	-1.23	1.00	1675667.14	3231646.19	39.685625	-104.676914
Hold	449.67	2.00	218.66	449.63	-1.93	-2.72	-2.17	1.00	1675665.95	3231645.25	39.685622	-104.676918
	500.00	2.00	218.66	499.93	-2.91	-4.09	-3.27	0.00	1675664.57	3231644.17	39.685618	-104.676922
	600.00	2.00	218.66	599.87	-4.84	-6.81	-5.45	0.00	1675661.83	3231642.02	39.685610	-104.676929
	700.00	2.00	218.66	699.81	-6.78	-9.53	-7.62	0.00	1675659.09	3231639.87	39.685603	-104.676937
	800.00	2.00	218.66	799.75	-8.72	-12.25	-9.80	0.00	1675656.35	3231637.72	39.685595	-104.676945
	900.00	2.00	218.66	899.69	-10.65	-14.97	-11.98	0.00	1675653.61	3231635.56	39.685588	-104.676953
	1000.00	2.00	218.66	999.63	-12.59	-17.69	-14.15	0.00	1675650.87	3231633.41	39.685580	-104.676960
Drop 1 DLS	1100.00	2.00	218.66	1099.56	-14.52	-20.41	-16.33	0.00	1675648.13	3231631.26	39.685573	-104.676968
	1168.84	2.00	218.66	1168.37	-15.86	-22.28	-17.83	0.00	1675646.24	3231629.78	39.685568	-104.676973
	1200.00	1.69	218.66	1199.51	-16.41	-23.06	-18.45	1.00	1675645.46	3231629.16	39.685566	-104.676976
	1300.00	0.69	218.66	1299.48	-17.56	-24.68	-19.74	1.00	1675643.83	3231627.88	39.685561	-104.676980
Hold Vertical	1368.52	0.00	218.66	1368.00	-17.79	-25.00	-20.00	1.00	1675643.51	3231627.63	39.685560	-104.676981
	1400.00	0.00	218.66	1399.48	-17.79	-25.00	-20.00	0.00	1675643.51	3231627.63	39.685560	-104.676981
	1500.00	0.00	218.66	1499.48	-17.79	-25.00	-20.00	0.00	1675643.51	3231627.63	39.685560	-104.676981
	1600.00	0.00	218.66	1599.48	-17.79	-25.00	-20.00	0.00	1675643.51	3231627.63	39.685560	-104.676981
	1700.00	0.00	218.66	1699.48	-17.79	-25.00	-20.00	0.00	1675643.51	3231627.63	39.685560	-104.676981
	1800.00	0.00	218.66	1799.48	-17.79	-25.00	-20.00	0.00	1675643.51	3231627.63	39.685560	-104.676981
	1900.00	0.00	218.66	1899.48	-17.79	-25.00	-20.00	0.00	1675643.51	3231627.63	39.685560	-104.676981
	2000.00	0.00	218.66	1999.48	-17.79	-25.00	-20.00	0.00	1675643.51	3231627.63	39.685560	-104.676981
	2100.00	0.00	218.66	2099.48	-17.79	-25.00	-20.00	0.00	1675643.51	3231627.63	39.685560	-104.676981
	2200.00	0.00	218.66	2199.48	-17.79	-25.00	-20.00	0.00	1675643.51	3231627.63	39.685560	-104.676981
	2300.00	0.00	218.66	2299.48	-17.79	-25.00	-20.00	0.00	1675643.51	3231627.63	39.685560	-104.676981
	2400.00	0.00	218.66	2399.48	-17.79	-25.00	-20.00	0.00	1675643.51	3231627.63	39.685560	-104.676981
Build 2 DLS	2500.00	0.00	218.66	2499.48	-17.79	-25.00	-20.00	0.00	1675643.51	3231627.63	39.685560	-104.676981
	2500.52	0.00	218.66	2500.00	-17.79	-25.00	-20.00	0.00	1675643.51	3231627.63	39.685560	-104.676981
	2600.00	1.99	226.01	2599.46	-18.93	-26.20	-21.24	2.00	1675642.30	3231626.40	39.685557	-104.676985
	2700.00	3.99	226.01	2699.32	-22.35	-29.82	-24.99	2.00	1675638.64	3231622.68	39.685547	-104.676999
	2800.00	5.99	226.01	2798.94	-28.07	-35.86	-31.25	2.00	1675632.54	3231616.48	39.685531	-104.677021
	2900.00	7.99	226.01	2898.19	-36.07	-44.31	-40.01	2.00	1675624.01	3231607.80	39.685507	-104.677052
	3000.00	9.99	226.01	2996.96	-46.34	-55.17	-51.25	2.00	1675613.06	3231596.66	39.685478	-104.677092
Hold	3094.68	11.88	226.01	3089.91	-58.15	-67.64	-64.17	2.00	1675600.47	3231583.85	39.685443	-104.677138
	3100.00	11.88	226.01	3095.12	-58.87	-68.40	-64.96	0.00	1675599.70	3231583.07	39.685441	-104.677141
	3200.00	11.88	226.01	3192.97	-72.41	-82.71	-79.77	0.00	1675585.26	3231568.39	39.685402	-104.677193
	3300.00	11.88	226.01	3290.83	-85.95	-97.01	-94.59	0.00	1675570.83	3231553.70	39.685363	-104.677246
	3400.00	11.88	226.01	3388.69	-99.48	-111.31	-109.40	0.00	1675556.39	3231539.02	39.685323	-104.677299
	3500.00	11.88	226.01	3486.55	-113.02	-125.61	-124.21	0.00	1675541.95	3231524.33	39.685284	-104.677351
	3600.00	11.88	226.01	3584.40	-126.56	-139.92	-139.03	0.00	1675527.52	3231509.65	39.685245	-104.677404
	3700.00	11.88	226.01	3682.26	-140.10	-154.22	-153.84	0.00	1675513.08	3231494.97	39.685206	-104.677457
	3800.00	11.88	226.01	3780.12	-153.63	-168.52	-168.66	0.00	1675498.65	3231480.28	39.685166	-104.677509
	3900.00	11.88	226.01	3877.97	-167.17	-182.82	-183.47	0.00	1675484.21	3231465.60	39.685127	-104.677562
	4000.00	11.88	226.01	3975.83	-180.71	-197.13	-198.29	0.00	1675469.77	3231450.91	39.685088	-104.677615
	4100.00	11.88	226.01	4073.69	-194.24	-211.43	-213.10	0.00	1675455.34	3231436.23	39.685049	-104.677667
	4200.00	11.88	226.01	4171.54	-207.78	-225.73	-227.91	0.00	1675440.90	3231421.55	39.685009	-104.677720
	4300.00	11.88	226.01	4269.40	-221.32	-240.03	-242.73	0.00	1675426.47	3231406.86	39.684970	-104.677772
	4400.00	11.88	226.01	4367.26	-234.86	-254.34	-257.54	0.00	1675412.03	3231392.18	39.684931	-104.677825
	4500.00	11.88	226.01	4465.11	-248.39	-268.64	-272.36	0.00	1675397.59	3231377.49	39.684892	-104.677878
	4600.00	11.88	226.01	4562.97	-261.93	-282.94	-287.17	0.00	1675383.16	3231362.81	39.684852	-104.677930
	4700.00	11.88	226.01	4660.83	-275.47	-297.24	-301.99	0.00	1675368.72	3231348.13	39.684813	-104.677983
	4800.00	11.88	226.01	4758.69	-289.01	-311.55	-316.80	0.00	1675354.29	3231333.44	39.684774	-104.678036
	4900.00	11.88	226.01	4856.54	-302.54	-325.85	-331.61	0.00	1675339.85	3231318.76	39.684734	-104.678088
	5000.00	11.88	226.01	4954.40	-316.08	-340.15	-346.43	0.00	1675325.41	3231304.08	39.684695	-104.678141
	5100.00	11.88	226.01	5052.26	-329.62	-354.46	-361.24	0.00	1675310.98	3231289.39	39.684656	-104.678194
	5200.00	11.88	226.01	5150.11	-343.16	-368.76	-376.06	0.00	1675296.54	3231274.71	39.684617	-104.678246
	5300.00	11.88	226.01	5247.97	-356.69	-383.06	-390.87	0.00	1675282.11	3231260.02	39.684577	-104.678299
	5400.00	11.88	226.01	5345.83	-370.23	-397.36	-405.69	0.00	1675267.67	3231245.34	39.684538	-104.678351
	5500.00	11.88	226.01	5443.68	-383.77	-411.67	-420.50	0.00	1675253.23	3231230.66	39.684499	-104.678404
	5600.00	11.88	226.01	5541.54	-397.31	-425.97	-435.31	0.00	1675238.80	3231215.97	39.684460	-104.678457
	5700.00	11.88	226.01	5639.40	-410.84	-440.27	-450.13	0.00	1675224.36	3231201.29	39.684420	-104.678509
	5800.00	11.88	226.01	5737.25	-424.38	-454.57	-464.94	0.00	1675209.93	3231186.60	39.684381	-104.678562
	5900.00	11.88	226.01	5835.11	-437.92	-468.88	-479.76	0.00	1675195.49	3231171.92	39.684342	-104.678615
	6000.00	11.88	226.01	5932.97	-451.45	-483.18	-494.57	0.00	1675181.05	3231157.24	39.684303	-104.678667
	6100.00	11.88	226.01	6030.83	-464.99	-497.48	-509.39	0.00	1675166.62	3231142.55	39.684263	-104.678720
	6200.00	11.88	226.01	6128.68	-478.53	-511.78	-524.20	0.00	1675152.18	3231127.87	39.684224	-104.678772
	6300.00	11.88	226.01	6226.54	-492.07	-526.09	-539.01	0.00	1675137.75	3231113.19	39.684185	-104.678825
	6400.00	11.88	226.01	6324.40	-505.60	-540.39	-553.83	0.00	1675123.31	3231098.50	39.684145	-104.678878
	6500.00	11.88	226.01	6422.25	-519.14	-554.69	-568.64	0.00	1675108.87	3231083.82	39.684106	-104.678930
	6600.00	11.88	226.01	6520.11	-532.68	-568.99	-583.46	0.00	1675094.44	3231069.13	39.684067	-104.678983
	6700.00	11.88	226.01	6617.97	-546.22	-583.30	-598.27	0.00	1675080.00	3231054.45	39.684028	-104.679036

Comments	MD (ft)	Incl (°)	Azim True (°)	TVD (ft)	VSEC (ft)	NS (ft)	EW (ft)	DLS (°/100ft)	Northing (ftUS)	Easting (ftUS)	Latitude (°)	Longitude (°)
	7200.00	11.88	226.01	7107.25	-613.90	-654.81	-672.34	0.00	1675007.82	3230981.03	39.683831	-104.679299
KOP, Build/Turn 8 DLS	7234.04	11.88	226.01	7140.56	-618.51	-659.68	-677.38	0.00	1675002.91	3230976.03	39.683818	-104.679317
	7300.00	9.09	200.99	7205.45	-624.42	-669.27	-684.14	8.00	1674993.26	3230969.36	39.683792	-104.679341
	7400.00	9.97	151.43	7304.22	-621.83	-684.27	-682.83	8.00	1674978.27	3230970.81	39.683750	-104.679336
	7500.00	15.59	124.84	7401.79	-605.39	-699.58	-667.64	8.00	1674963.10	3230986.14	39.683708	-104.679282
	7600.00	22.67	113.25	7496.24	-575.40	-714.89	-638.85	8.00	1674948.05	3231015.06	39.683666	-104.679180
	7700.00	30.19	107.08	7585.74	-532.46	-729.90	-597.04	8.00	1674933.42	3231057.01	39.683625	-104.679031
	7800.00	37.90	103.21	7668.54	-477.40	-744.33	-543.02	8.00	1674919.48	3231111.16	39.683586	-104.678839
	7900.00	45.69	100.50	7743.05	-411.29	-757.89	-477.83	8.00	1674906.51	3231176.46	39.683548	-104.678608
	8000.00	53.54	98.42	7807.79	-335.42	-770.32	-402.75	8.00	1674894.76	3231251.65	39.683514	-104.678341
	8100.00	61.41	96.73	7861.52	-251.27	-781.37	-319.24	8.00	1674884.47	3231335.26	39.683484	-104.678044
	8200.00	69.30	95.28	7903.20	-160.47	-790.84	-228.92	8.00	1674875.82	3231425.66	39.683458	-104.677723
	8300.00	77.20	93.97	7931.99	-64.79	-798.53	-133.55	8.00	1674868.99	3231521.10	39.683437	-104.677384
	8400.00	85.11	92.74	7947.36	33.90	-804.30	-34.99	8.00	1674864.12	3231619.71	39.683421	-104.677034
TPZ Point, Turn 2 DLS	8461.85	90.00	92.00	7950.00	95.62	-806.85	26.74	8.00	1674862.12	3231681.45	39.683414	-104.676815
	8500.00	90.00	91.24	7950.00	133.70	-807.93	64.87	2.00	1674861.39	3231719.59	39.683411	-104.676680
	8555.28	90.00	90.13	7950.00	188.83	-808.59	120.15	2.00	1674861.23	3231774.87	39.683409	-104.676483
Hold to TD	8600.00	90.00	90.13	7950.00	233.39	-808.69	164.87	0.00	1674861.53	3231819.59	39.683409	-104.676324
	8700.00	90.00	90.13	7950.00	333.05	-808.92	264.86	0.00	1674862.21	3231919.58	39.683408	-104.675969
	8800.00	90.00	90.13	7950.00	432.70	-809.15	364.86	0.00	1674862.89	3232019.58	39.683408	-104.675614
	8900.00	90.00	90.13	7950.00	532.35	-809.38	464.86	0.00	1674863.56	3232119.57	39.683407	-104.675258
	9000.00	90.00	90.13	7950.00	632.01	-809.61	564.86	0.00	1674864.24	3232219.57	39.683406	-104.674903
	9100.00	90.00	90.13	7950.00	731.66	-809.84	664.86	0.00	1674864.92	3232319.57	39.683406	-104.674548
	9200.00	90.00	90.13	7950.00	831.31	-810.07	764.86	0.00	1674865.59	3232419.56	39.683405	-104.674192
	9300.00	90.00	90.13	7950.00	930.97	-810.30	864.86	0.00	1674866.27	3232519.56	39.683404	-104.673837
	9400.00	90.00	90.13	7950.00	1030.62	-810.53	964.86	0.00	1674866.95	3232619.56	39.683404	-104.673482
	9500.00	90.00	90.13	7950.00	1130.27	-810.76	1064.86	0.00	1674867.62	3232719.55	39.683403	-104.673127
	9600.00	90.00	90.13	7950.00	1229.93	-810.99	1164.86	0.00	1674868.30	3232819.55	39.683403	-104.672771
	9700.00	90.00	90.13	7950.00	1329.58	-811.21	1264.86	0.00	1674868.98	3232919.54	39.683402	-104.672416
	9800.00	90.00	90.13	7950.00	1429.23	-811.44	1364.86	0.00	1674869.65	3233019.54	39.683401	-104.672061
	9900.00	90.00	90.13	7950.00	1528.89	-811.67	1464.86	0.00	1674870.33	3233119.54	39.683401	-104.671705
	10000.00	90.00	90.13	7950.00	1628.54	-811.90	1564.86	0.00	1674871.01	3233219.53	39.683400	-104.671350
	10100.00	90.00	90.13	7950.00	1728.19	-812.13	1664.86	0.00	1674871.68	3233319.53	39.683399	-104.670995
	10200.00	90.00	90.13	7950.00	1827.85	-812.36	1764.86	0.00	1674872.36	3233419.52	39.683399	-104.670639
	10300.00	90.00	90.13	7950.00	1927.50	-812.59	1864.86	0.00	1674873.04	3233519.52	39.683398	-104.670284
	10400.00	90.00	90.13	7950.00	2027.15	-812.82	1964.86	0.00	1674873.71	3233619.52	39.683397	-104.669929
	10500.00	90.00	90.13	7950.00	2126.81	-813.05	2064.86	0.00	1674874.39	3233719.52	39.683397	-104.669574
	10600.00	90.00	90.13	7950.00	2226.46	-813.28	2164.86	0.00	1674875.07	3233819.51	39.683396	-104.669218
	10700.00	90.00	90.13	7950.00	2326.11	-813.51	2264.86	0.00	1674875.74	3233919.51	39.683395	-104.668863
	10800.00	90.00	90.13	7950.00	2425.77	-813.74	2364.86	0.00	1674876.42	3234019.50	39.683395	-104.668508
	10900.00	90.00	90.13	7950.00	2525.42	-813.97	2464.86	0.00	1674877.10	3234119.50	39.683394	-104.668152
	11000.00	90.00	90.13	7950.00	2625.07	-814.20	2564.86	0.00	1674877.77	3234219.50	39.683393	-104.667797
	11100.00	90.00	90.13	7950.00	2724.73	-814.43	2664.86	0.00	1674878.45	3234319.49	39.683393	-104.667442
	11200.00	90.00	90.13	7950.00	2824.38	-814.66	2764.86	0.00	1674879.13	3234419.49	39.683392	-104.667086
	11300.00	90.00	90.13	7950.00	2924.03	-814.89	2864.86	0.00	1674879.80	3234519.49	39.683392	-104.666731
	11400.00	90.00	90.13	7950.00	3023.69	-815.11	2964.86	0.00	1674880.48	3234619.48	39.683391	-104.666376
	11500.00	90.00	90.13	7950.00	3123.34	-815.34	3064.86	0.00	1674881.16	3234719.48	39.683390	-104.666021
	11600.00	90.00	90.13	7950.00	3222.99	-815.57	3164.86	0.00	1674881.83	3234819.47	39.683390	-104.665665
	11700.00	90.00	90.13	7950.00	3322.65	-815.80	3264.86	0.00	1674882.51	3234919.47	39.683389	-104.665310
	11800.00	90.00	90.13	7950.00	3422.30	-816.03	3364.86	0.00	1674883.19	3235019.47	39.683388	-104.664955
	11900.00	90.00	90.13	7950.00	3521.95	-816.26	3464.86	0.00	1674883.86	3235119.46	39.683388	-104.664599
	12000.00	90.00	90.13	7950.00	3621.61	-816.49	3564.86	0.00	1674884.54	3235219.46	39.683387	-104.664244
	12100.00	90.00	90.13	7950.00	3721.26	-816.72	3664.86	0.00	1674885.22	3235319.46	39.683386	-104.663889
	12200.00	90.00	90.13	7950.00	3820.91	-816.95	3764.86	0.00	1674885.89	3235419.45	39.683386	-104.663534
	12300.00	90.00	90.13	7950.00	3920.57	-817.18	3864.86	0.00	1674886.57	3235519.45	39.683385	-104.663178
	12400.00	90.00	90.13	7950.00	4020.22	-817.41	3964.86	0.00	1674887.25	3235619.44	39.683384	-104.662823
	12500.00	90.00	90.13	7950.00	4119.87	-817.64	4064.86	0.00	1674887.92	3235719.44	39.683384	-104.662468
	12600.00	90.00	90.13	7950.00	4219.53	-817.87	4164.86	0.00	1674888.60	3235819.43	39.683383	-104.662112
	12700.00	90.00	90.13	7950.00	4319.18	-818.10	4264.86	0.00	1674889.27	3235919.43	39.683382	-104.661757
	12800.00	90.00	90.13	7950.00	4418.83	-818.33	4364.86	0.00	1674889.95	3236019.43	39.683381	-104.661402
	12900.00	90.00	90.13	7950.00	4518.49	-818.56	4464.86	0.00	1674890.63	3236119.43	39.683381	-104.661046
	13000.00	90.00	90.13	7950.00	4618.14	-818.78	4564.86	0.00	1674891.30	3236219.42	39.683380	-104.660691
	13100.00	90.00	90.13	7950.00	4717.79	-819.01	4664.86	0.00	1674891.98	3236319.42	39.683379	-104.660336
	13200.00	90.00	90.13	7950.00	4817.45	-819.24	4764.86	0.00	1674892.66	3236419.42	39.683379	-104.659981
	13300.00	90.00	90.13	7950.00	4917.10	-819.47	4864.86	0.00	1674893.33	3236519.41	39.683378	-104.659625
	13400.00	90.00	90.13	7950.00	5016.75	-819.70	4964.86	0.00	1674894.01	3236619.41	39.683377	-104.659270
	13500.00	90.00	90.13	7950.00	5116.41	-819.93	5064.86	0.00	1674894.69	3236719.40	39.683377	-104.658915
	13600.00	90.00	90.13	7950.00	5216.06	-820.16	5164.86	0.00	1674895.36	3236819.40	39.683376	-104.658559
	13700.00	90.00	90.13	7950.00	5315.71	-820.39	5264.86	0.00	1674896.04	3236919.40	39.683375	-104.658204
	13800.00	90.00	90.13	7950.00	5415.36	-820.62	5364.86	0.00	1674896.72	3237019.39	39.683375	-104.657849
	13900.00	90.00	90.13	7950.00	5515.02	-820.85	5464.86	0.00	1674897.39	3237119.39	39.683374	-104.657493
	14000.00	90.00	90.13	7950.00	5614.67	-821.08	5564.86	0.00	1674898.07	3237219.39	39.683373	-104.657138
	14100.00	90.00	90.13	7950.00	5714.32	-821.31	5664.86	0.00	1674898.75	3237319.38	39.683373	-104.656783
	14200.00	90.00	90.13	7950.00	5813.98	-821.54	5764.86	0.00	1674899.42	3237419.38	39.683372	-104.656428
	14300.00	90.00	90.13	7950.00	5913.63	-821.77	5864.86	0.00	1674900.10	3237519.37	39.683371	-104.656072
	14400.00	90.00	90.13	7950.00	6013.28	-822.00	5964.86	0.00	1674900.78	3237619.37	39.683371	-104.655717
	14500.00	90.00	90.13	7950.00	6112.94	-822.23	6064.86	0.00	1674901.45	3237719.37	39.683370	-104.655362
	14600.00	90.00	90.13	7950.00	6212.59	-822.46	6164.86	0.00	167490			

Comments	MD (ft)	Incl (°)	Azim True (°)	TVD (ft)	VSEC (ft)	NS (ft)	EW (ft)	DLS (°/100ft)	Northing (ftUS)	Easting (ftUS)	Latitude (°)	Longitude (°)
	17500.00	90.00	90.13	7950.00	9102.54	-829.11	9064.84	0.00	1674921.75	3240719.26	39.683348	-104.644703
	17600.00	90.00	90.13	7950.00	9202.19	-829.34	9164.84	0.00	1674922.43	3240819.25	39.683348	-104.644347
	17700.00	90.00	90.13	7950.00	9301.84	-829.57	9264.84	0.00	1674923.11	3240919.25	39.683347	-104.643992
	17800.00	90.00	90.13	7950.00	9401.50	-829.80	9364.84	0.00	1674923.78	3241019.25	39.683346	-104.643637
	17900.00	90.00	90.13	7950.00	9501.15	-830.03	9464.84	0.00	1674924.46	3241119.24	39.683346	-104.643282
	18000.00	90.00	90.13	7950.00	9600.80	-830.25	9564.84	0.00	1674925.14	3241219.24	39.683345	-104.642926
	18100.00	90.00	90.13	7950.00	9700.46	-830.48	9664.84	0.00	1674925.81	3241319.23	39.683344	-104.642571
Sunset 4-65 21-22 4BH BHL	18114.62	90.00	90.13	7950.00	9715.02	-830.52	9679.46	0.00	1674925.91	3241333.85	39.683344	-104.642519

Survey Type: Def Plan

Survey Error Model: ISCWSA Rev 0 *** 3-D 95.000% Confidence 2.7955 sigma
Survey Program:

Description	Part	MD From (ft)	MD To (ft)	EOU Freq (ft)	Hole Size	Casing Diameter (in)	Expected Max Inclination (deg)	Survey Tool Type	Borehole / Survey
	1	0.000	28.000	1/100.000	13.500	9.625		NAL_MWD-NON_SLB-Depth Only	Original Hole / Sunset 4-65 21-22 4BH Plan #0
	1	28.000	2200.000	1/100.000	13.500	9.625		NAL_MWD-NON_SLB	Original Hole / Sunset 4-65 21-22 4BH Plan #0
	1	2200.000	18114.620	1/100.000	8.500	5.500		NAL_MWD_PLUS_0.5_DEG	Original Hole / Sunset 4-65 21-22 4BH Plan #0