

# HALLIBURTON

iCem<sup>®</sup> Service

## **PETROSTAR SERVICES**

Ft. Lupton District, Colorado

**For: Matt Morgan**

Date: Friday, May 10, 2019

## **Wright-Goin C7-28D**

Weld, Wattenberg

Case 1

Job Date: Friday, May 10, 2019

Sincerely,

**Aaron Smith**

## Legal Notice

---

### Disclaimer:

All information in this report is provided subject to the terms and conditions which govern the services provided by Halliburton. Halliburton personnel use their best efforts in gathering information and their best judgment in interpreting it, but any interpretation, research, analysis or recommendation furnished by Halliburton are opinions based upon inferences from measurements and empirical relationships and assumptions, which inferences and empirical relationships and assumptions are not infallible, and with respect to which professionals in the industry may differ. iCem 3D Displacement results are used to understand how fluids intermix during a cement job. Simulation and 3D displacement results are not intended as and should not be used as a replacement for bond logs in determining top of cement. Current 3D model calculations are known to model more volume than the input volume for standard cases due to known calculation improvements required. For rotational cases, the modeled volume will be impacted by the same calculations impacting the standard cases, as well as additional constraints imposed to make the calculation time required operationally feasible. Therefore, until further notice, 3D displacement results should not be used for replacement of a bond log, or used as an identifier of top of cement. HALLIBURTON IS UNABLE TO GUARANTEE THE ACCURACY OF ANY CHART INTERPRETATION, RESEARCH ANALYSIS, OR JOB RECOMMENDATION and any interpretation or recommendation is not for use of or reliance upon by any third party. The customer has full responsibility for any of its decisions which are based on the information provided in this report.

Table of Contents

---

Real-Time Job Summary .....1

    Job Event Log.....1

Attachments.....1

    Case 1-Custom Results.png .....1

    Case 1-Custom Results (1).png .....1

## 1.0 Real-Time Job Summary

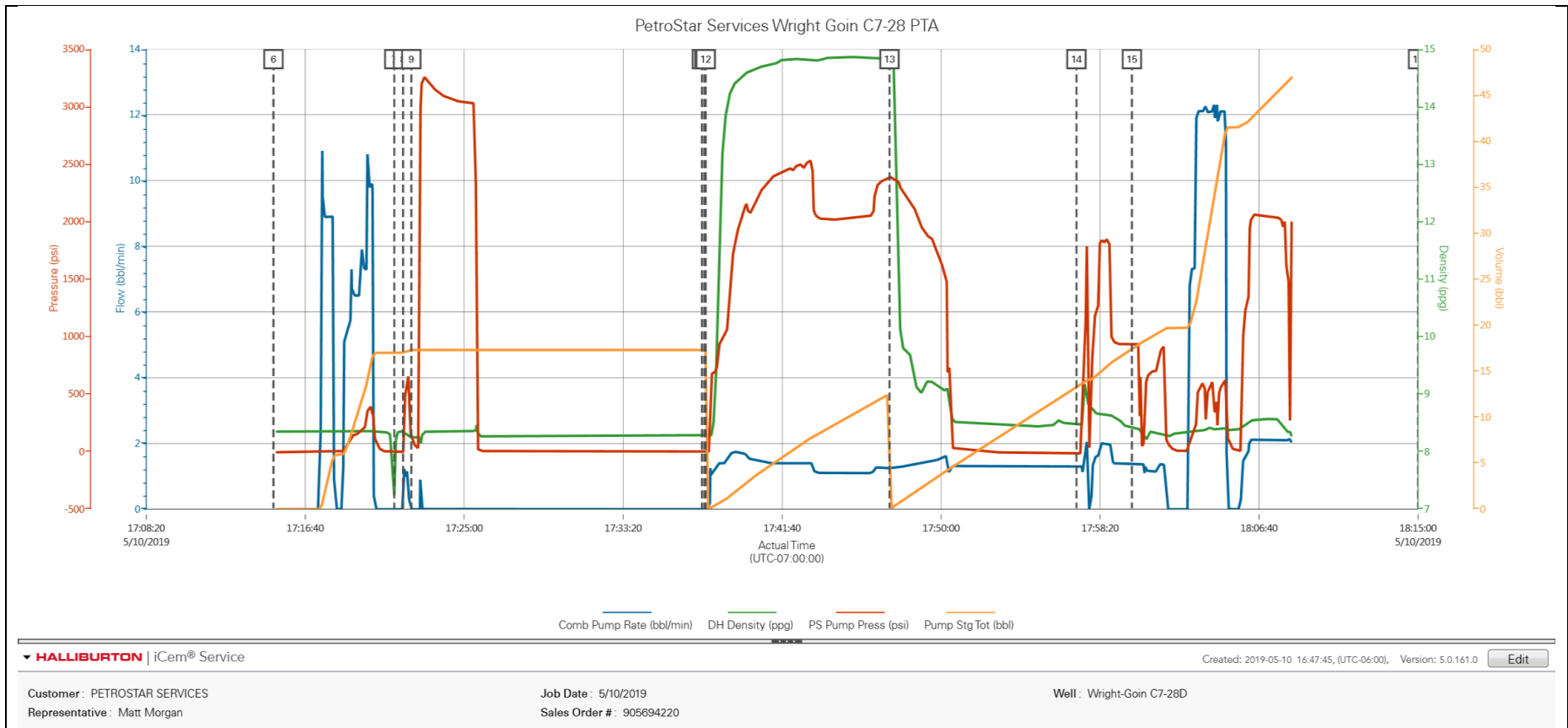
### 1.1 Job Event Log

Type	Seq. No.	Activity	Graph Label	Date	Time	Source	Comb Pump Rate (bbl/min)	DH Density (ppg)	PS Pump Press (psi)	Pump Stg Tot (bbl)	Comments
Event	1	Depart from Service Center or Other Site	Depart from Service Center or Other Site	5/10/2019	16:20:00	USER					Journey management meeting held prior to departure. Journey called into dispatch and approved.
Event	2	Arrive at Location from Service Center	Arrive at Location from Service Center	5/10/2019	16:30:00	USER					Arrive on location with all equipment and materials. Hazard hunt performed before spotting in equipment. Met with customer rep, to discuss numbers and job procedure.
Event	3	Comment	Comment	5/10/2019	16:30:01	USER					Tubing 619 Casing 4 1/2"  TOC 0'
Event	4	Pre-Rig Up Safety Meeting	Pre-Rig Up Safety Meeting	5/10/2019	16:50:00	USER					JSA held with HES crew to discuss the hazards of rig-up.
Event	5	Rig-Up Completed	Rig-Up Completed	5/10/2019	17:00:00	USER					All bulk equipment and surface lines, rigged up. High pressure hoses, and valve brought up to floor after pre-job safety meeting.
Event	6	Pre-Job Safety Meeting	Pre-Job Safety Meeting	5/10/2019	17:15:00	USER					JSA with all essential personnel to discuss the job procedure and hazards of the job.

Event	7	Start Job	Start Job	5/10/2019	17:21:20	COM5	0.00	7.24	-2.00	17.00	
Event	8	Other	Other	5/10/2019	17:21:48	COM5	0.00	8.36	-2.00	17.00	fill lines
Event	9	Test Lines	Test Lines	5/10/2019	17:22:14	COM5	0.00	8.24	127.00	17.30	@3500 psi.
Event	10	Pump Cement	Pump Cement	5/10/2019	17:37:40	COM5	0.00	8.29	2.00	0.00	44 sks (10.9 bbls) PlugCem @ 14.5# 1.39 ft3/sk, 6.78 gal/sk. Verified with pressurized scales.
Event	11	Pump Displacement	Pump Displacement	5/10/2019	17:47:18	COM5	1.20	14.83	2386.00	0.00	4 bbls fresh water to displace tubing.
Event	12	End Job	End Job	5/10/2019	17:57:06	COM5	1.30	8.48	-15.00	13.30	
Event	13	Pre-Rig Down Safety Meeting	Pre-Rig Down Safety Meeting	5/10/2019	18:00:00	USER	1.40	8.41	933.00	17.40	JSA with HES crew to discuss the hazards of rig-down.
Event	14	Rig-Down Completed	Rig-Down Completed	5/10/2019	18:15:00	USER					All equipment and surface lines rigged down, area around HES equipment cleaned up.
Event	15	Depart Location for Service Center or Other Site	Depart Location for Service Center or Other Site	5/10/2019	18:30:00	USER					Journey management meeting held prior to departure. Journey called into dispatch and approved.

2.0 Attachments

2.1 Case 1-Custom Results.png



2.2 Case 1-Custom Results (1).png

