

LEGEND:

- = PROPOSED WELLHEAD.
- = TARGET BOTTOM HOLE.
- ▲ = SECTION CORNERS LOCATED. (NAD 83)
- ◆ = TOP PRODUCTION ZONE.

NOTE:
Distances referenced on plat to section lines are perpendicular.

T4S, R65W, 6th P.M.

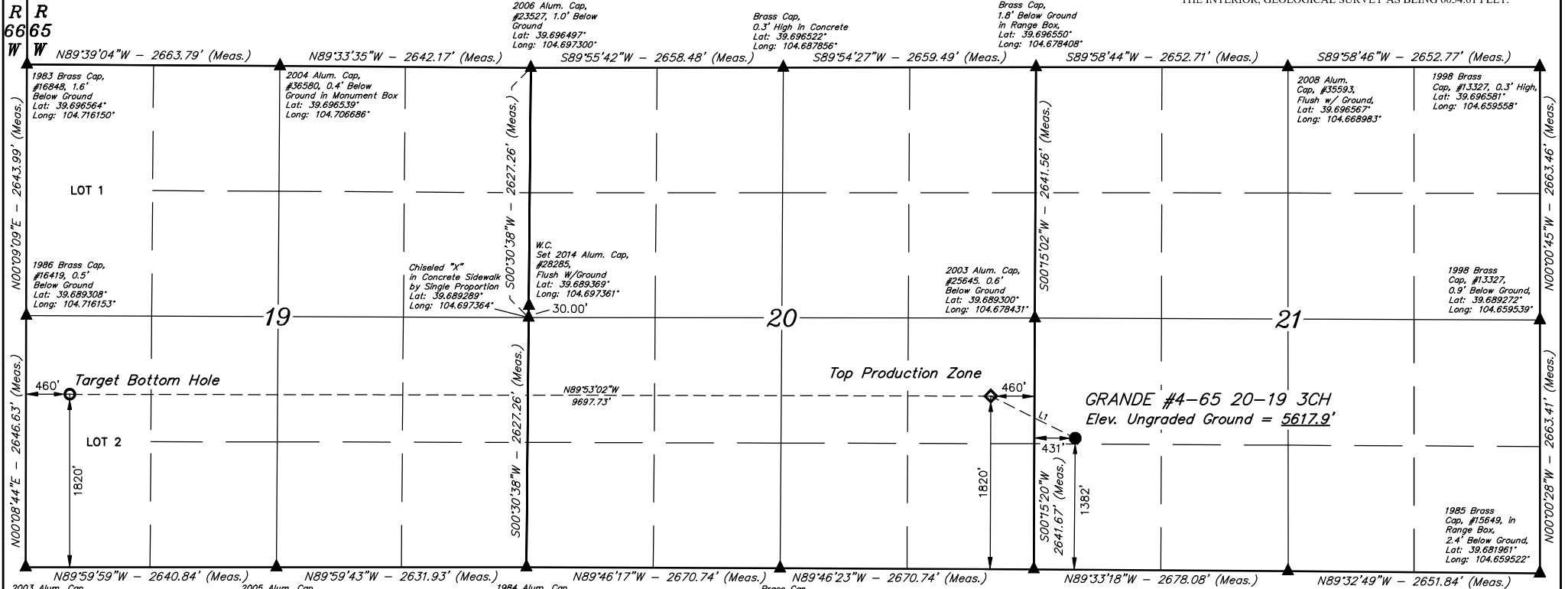
CRESTONE PEAK RESOURCES OPERATING LLC

GRANDE #4-65 20-19 3CH
NW 1/4 SW 1/4, SECTION 21, T4S, R65W, 6th P.M.
ARAPAHOE COUNTY, COLORADO



BASIS OF ELEVATION

BENCHMARK 374 LOCATED ON THE SECTION LINE BETWEEN SECTIONS 12 & 13, T5S, R64W, 6th P.M., TAKEN FROM 1988 PUBLISHED DATUM BY THE UNITED STATES DEPARTMENT OF THE INTERIOR, GEOLOGICAL SURVEY AS BEING 6054.61 FEET.



BASIS OF BEARINGS

LINE	DIRECTION	LENGTH
L1	N63°30'02"W	993.40'

PDOP = 1.4

REV: 3 05-07-20 M.D. (COMPANY, TPZ & BHL CHANGE)

THIS IS TO CERTIFY THAT THE ABOVE DESCRIBED SURVEY WAS MADE AND THE NOTES OF ACTUAL SURVEYS MADE BY ME OR UNDER MY SUPERVISION AND THAT THE SAME ARE TRUE AND CORRECT TO THE BEST OF MY KNOWLEDGE AND BELIEF.

[Signature]

REGISTERED LAND SURVEYOR
REG. NO. 28285
STATE OF COLORADO



NAD 83 (SURFACE LOCATION)	NAD 83 (TOP PRODUCTION ZONE)	NAD 83 (TARGET BOTTOM HOLE)
LATITUDE = 39°41'09.01" (39.685835)	LATITUDE = 39°41'13.37" (39.687047)	LATITUDE = 39°41'13.36" (39.687043)
LONGITUDE = 104°40'36.88" (104.676910)	LONGITUDE = 104°40'48.26" (104.680071)	LONGITUDE = 104°42'52.27" (104.714519)
NAD 27 (SURFACE LOCATION)	NAD 27 (TOP PRODUCTION ZONE)	NAD 27 (TARGET BOTTOM HOLE)
LATITUDE = 39°41'09.05" (39.685848)	LATITUDE = 39°41'13.41" (39.687060)	LATITUDE = 39°41'13.40" (39.687055)
LONGITUDE = 104°40'34.98" (104.676385)	LONGITUDE = 104°40'46.36" (104.679545)	LONGITUDE = 104°42'50.37" (104.713992)
STATE PLANE NAD 83 (CO. CEN.)	STATE PLANE NAD 83 (CO. CEN.)	STATE PLANE NAD 83 (CO. CEN.)
N: 1675743.84 E: 3231646.77	N: 1676177.14 E: 3230753.18	N: 1676090.06 E: 3221058.72
STATE PLANE NAD 27 (CO. CEN.)	STATE PLANE NAD 27 (CO. CEN.)	STATE PLANE NAD 27 (CO. CEN.)
N: 678736.21 E: 2231800.61	N: 676169.49 E: 2230907.02	N: 676082.25 E: 2221212.64

UJINTAH
ENGINEERING & LAND SURVEYING

UELS, LLC
Corporate Office • 85 South 200 East
Vernal, UT 84078 • (435) 789-1017

SURVEYED BY	JONATHON BAYLIFF, J.C.	04-20-18	SCALE
DRAWN BY	L.C.S.	11-03-16	1" = 1000'

WELL LOCATION PLAT

LEGEND:

- = PROPOSED WELLHEAD.
- = TARGET BOTTOM HOLE.
- ▲ = SECTION CORNERS LOCATED. (NAD 83)
- ◇ = TOP PRODUCTION ZONE.

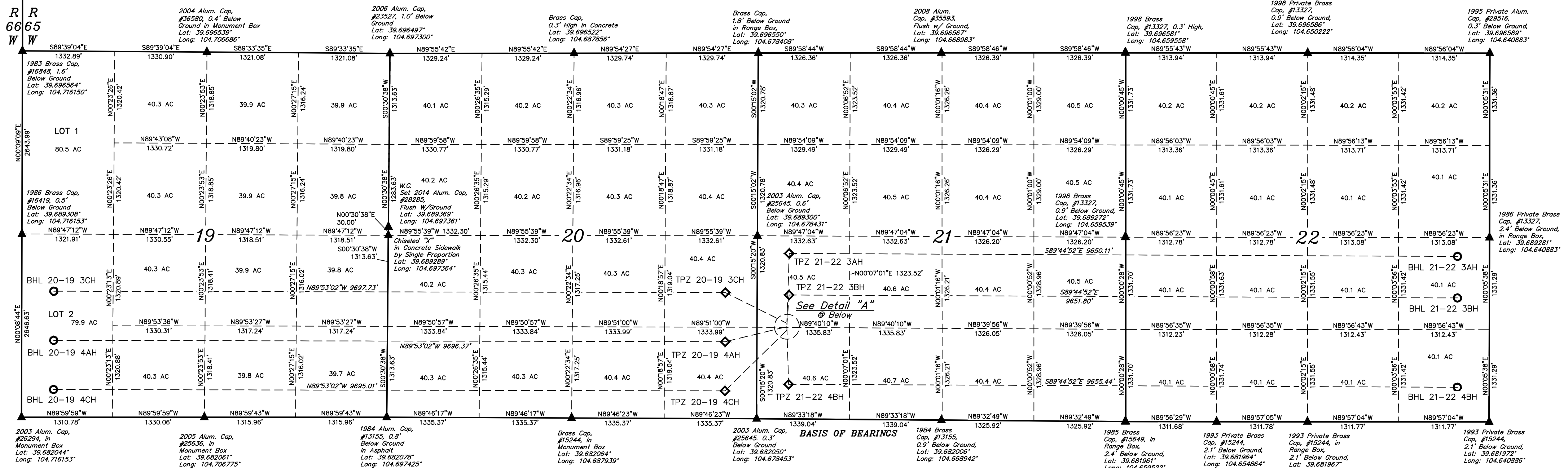
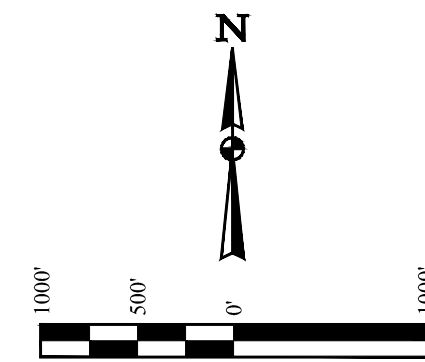
T4S, R65W, 6th P.M.

CRESTONE PEAK RESOURCES OPERATING LLC

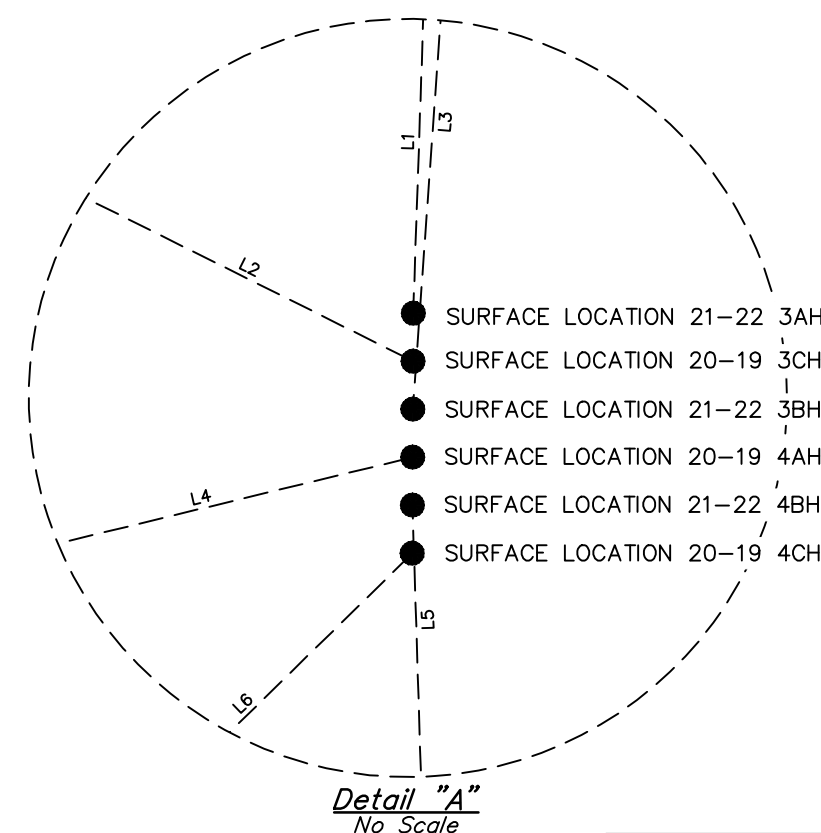
GRANDE #4-65 20-19 3BH, 3CH, 3DH, 4AH, 4BH, 4CH & 4DH
ON EXISTING GRANDE #4-65 20-19 3AH PAD
W 1/2 SW 1/4, SECTION 21, T4S, R65W, 6th P.M.
ARAPAHOE COUNTY, COLORADO

BASIS OF ELEVATION

BENCHMARK 374 LOCATED ON THE SECTION LINE BETWEEN SECTIONS 12 & 13, T5S, R64W, 6th. P.M., TAKEN FROM 1988 PUBLISHED DATUM BY THE UNITED STATES DEPARTMENT OF THE INTERIOR, GEOLOGICAL SURVEY AS BEING 6054.61 FEET.



LINE	DIRECTION	LENGTH
L1	N01°56'44"E	983.42'
L2	N63°30'02"W	993.40'
L3	N04°05'12"E	433.96'
L4	S76°20'31"W	917.94'
L5	S01°48'06"E	807.54'
L6	S45°35'18"W	1252.83'



WELL	SURFACE LOCATION	TOP PRODUCTION ZONE	TARGET BOTTOM HOLE
21-22 3AH	1407' FSL 431' FWL	2390' FSL 460' FWL	2390' FSL 460' FEL
20-19 3CH	1382' FSL 431' FWL	1820' FSL 460' FEL	1820' FSL 460' FWL
21-22 3BH	1357' FSL 431' FWL	1790' FSL 460' FWL	1790' FSL 460' FEL
20-19 4AH	1332' FSL 431' FWL	1110' FSL 460' FEL	1110' FSL 460' FWL
21-22 4BH	1307' FSL 431' FWL	500' FSL 460' FWL	500' FSL 460' FEL
20-19 4CH	1282' FSL 431' FWL	400' FSL 460' FEL	400' FSL 460' FWL

CERTIFICATE OF RECORD
THIS IS TO CERTIFY THAT THE ABOVE DESCRIBED SURVEY WAS MADE IN ACCORDANCE WITH THE NOTES OF ACTUAL SURVEYS MADE BY ME UNDER MY SUPERVISOR AND THAT THE SAME ARE TRUE AND CORRECT TO THE BEST OF MY KNOWLEDGE AND BELIEF.
REGISTERED LAND SURVEYOR
RECORDING NO. 28283
STATE OF COLORADO
JONATHAN BAYLIFF, J.C.

REV: 4 05-07-20 M.D.
(COMPANY, WELL NAME, TPZ & BHL CHANGE)

SURVEYED BY	JONATHAN BAYLIFF, J.C.	04-20-18	SCALE
DRAWN BY	L.C.S.	11-03-16	1" = 1000'

SECTION BREAKDOWN