



Kerr-McGee Oil & Gas Onshore LP

1099 18th Street
Denver, CO 80202
720-929-6000

June 9, 2020

Jeff Robbins
Director, Colorado Oil and Gas Conservation Commission
Department of Natural Resources – The Chancery Building
1120 Lincoln Street, Suite 801
Denver, CO 80203

Re: **30 Day Certification Letter - 318A.e**
NELSON 35-5HZ (Doc No. 402385091)
Township 2 North, Range 68 West
Section 35: NENW
Unit Acreage: 960 Acres
Proposed Spacing Unit:
02N68W SEC 26: S2SW;
02N68W SEC 35: W2;
01N68W SEC 02: W2;
01N68W SEC 11: NW, N2SW
Weld County, Colorado

Dear Director Robbins:

Kerr-McGee Oil and Gas Onshore LP (“KMG”) hereby certifies that a thirty (30) day notice has been given by certified mail to all mineral owners in the proposed wellbore spacing unit. We have not received any objections to such well location, proposed spacing unit, or additional producing formation. KMG hereby respectfully requests approval of this boundary well.

If you have any questions or issues regarding this permit, please contact me at (720) 929-3167.

Sincerely,

Kerr-McGee Oil and Gas Onshore LP

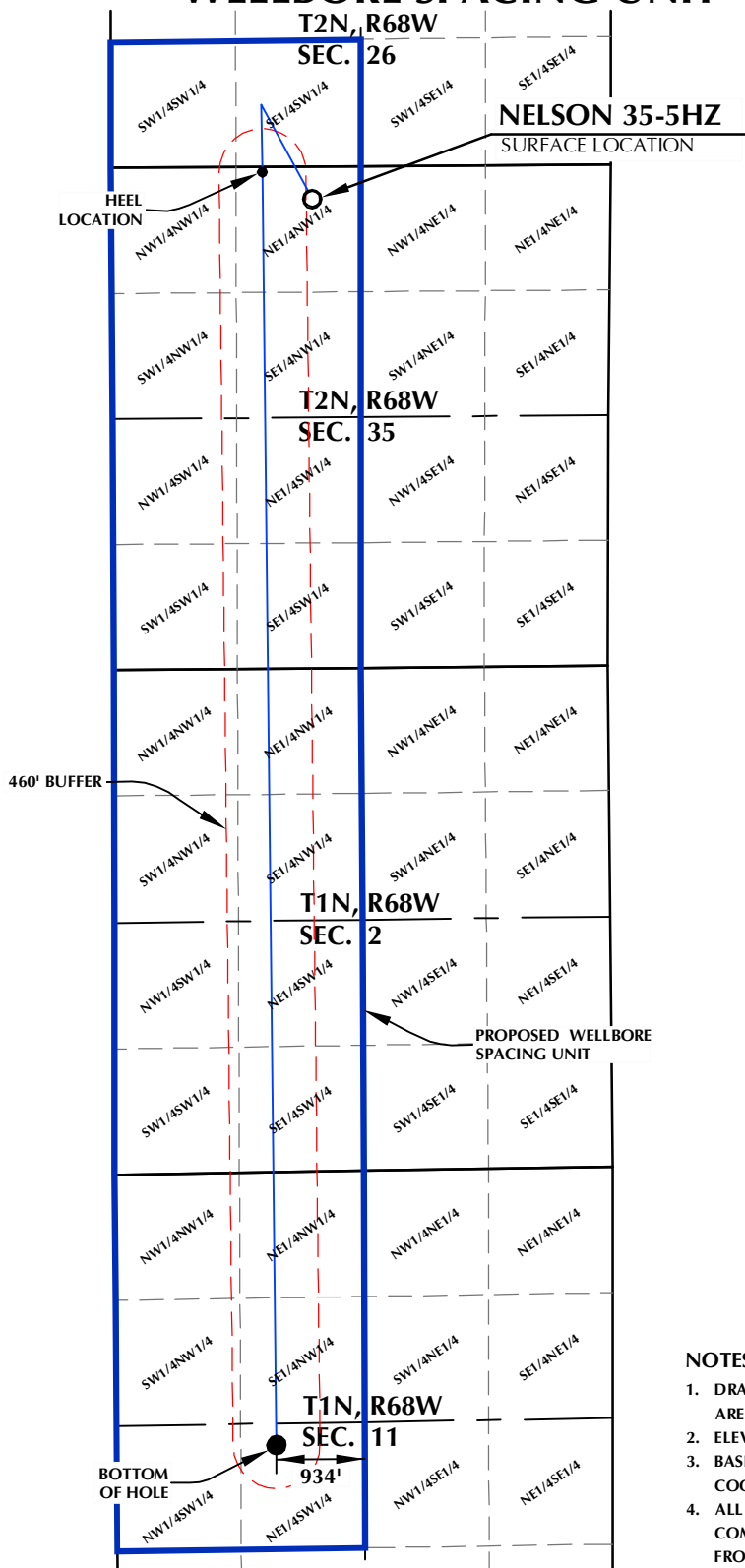
A handwritten signature in black ink that reads 'Samantha Petite'.

Samantha Petite
Regulatory Analyst

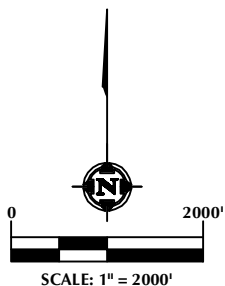
Enclosure

DISTANCE FROM COMPLETED
PORTION OF WELLBORE TO
NEAREST UNIT BOUNDARY= 934'

NELSON 35-5HZ WELLBORE SPACING UNIT



SURFACE LOCATION: NAD 83
GROUND ELEVATION= 4952.4'
LATITUDE= 40.101354°
LONGITUDE= -104.972280°
HEEL LOCATION: NAD 83
LATITUDE= 40.102139°
LONGITUDE= -104.974156°
BOTTOM HOLE LOCATION: NAD 83
LATITUDE= 40.065130°
LONGITUDE= -104.973907°
LATITUDE= 40°03'54.468"
LONGITUDE= -104°58'26.065"



NOTES:

1. DRAWING LATITUDE AND LONGITUDE COORDINATES ARE NAD 83 (2011)(EPOCH:2010).
 2. ELEVATION BASED ON NAVD88 (GEOID12B).
 3. BASIS OF BEARING DERIVED FROM COLORADO COORDINATE SYSTEM OF 1983 NORTH ZONE.
 4. ALL MEASURED DISTANCES ARE GRID.
- COMBINED SCALE FACTOR: .99972700 CALCULATED FROM THE N. 1/4 CORNER OF SECTION 26, T2N, R68W.

WELL PAD - NELSON 28-35HZ

NELSON 35-5HZ
WELLBORE SPACING UNIT
337' FNL & 1219' FWL NENW (SURFACE)
50' FNL & 1604' FWL NENW (HEEL)
LOCATED IN SECTION 35, T2N, R68W, 6TH P.M.
2432' FSL & 1694' FWL NESW (BOTTOM)
LOCATED IN SECTION 11, T1N, R68W, 6TH P.M.
WELD COUNTY, COLORADO

**Kerr-McGee Oil &
Gas Onshore L.P.**
1099 18th Street
Denver, Colorado 80202



CONSULTING, LLC

SHERIDAN OFFICE 1095 Saberton Avenue
Sheridan, Wyoming 82801
Phone 307-674-0609

LOVELAND OFFICE 6706 North Franklin Avenue
Loveland, Colorado 80538
Phone 970-776-4331

DRAFTED BY:	LMO	CHECKED BY:	RKF
DATE DRAFTED:	2/12/19	DATE SURVEYED:	12/9/19
REVISED:	1/10/2020	FILE NAME:	16-193