

WELLBORE CONTINUES
INTO SECTION 23

NW. COR.
SEC. 26, T2N, R68W
FOUND TWO 3 1/4"
ALUM. CAP
REFERENCE MONUMENTS
P.L.S. NO. 29430

MATCH LINE
SEE SHEET 2

S 89°29'19" W 2643.63' (M)

S 89°44'49" W
1319.77' (M)

S 89°44'08" W
1319.83' (M)

NE. COR.
SEC. 26, T2N, R68W
FOUND 3 1/4" BLM
BRASS CAP

N. 1/4 COR.
SEC. 26, T2N, R68W
FOUND 3 1/4" BLM
BRASS CAP

E. 1/16 COR.
SEC. 23 & SEC. 26
T2N, R68W
FOUND 3 1/4" ALUM. CAP
P.L.S. NO. 34995

SURFACE LOCATION: NAD 83
GROUND ELEVATION= 4952.7'
LATITUDE= 40.101355°
LONGITUDE= -104.972441°
LATITUDE= 40°06'04.876"
LONGITUDE= -104°58'20.788"
HEEL LOCATION: NAD 83
LATITUDE= 40.102547°
LONGITUDE= -104.972299°
LATITUDE= 40°06'09.169"
LONGITUDE= -104°58'20.277"
BOTTOM HOLE LOCATION: NAD 83
LATITUDE= 40.125105°
LONGITUDE= -104.972468°
LATITUDE= 40°07'30.378"
LONGITUDE= -104°58'20.885"

N 00°08'08" W
2643.29' (M)

N 00°29'49" W 2613.05' (M)

26

T2N, R68W

W. 1/4 COR.
SEC. 26, T2N, R68W
FOUND 3 1/4" ALUM. CAP
P.L.S. NO. 29430

S 89°05'15" W
2644.69' (M)

CENTER 1/4 COR.
SEC. 26, T2N, R68W
FOUND 2" ALUM. CAP
P.L.S. NO. 23500

S 89°05'19" W
2656.31' (M)

E. 1/4 COR.
SEC. 26, T2N, R68W
FOUND 3 1/4" BLM
BRASS CAP

N 00°07'05" W 2663.51' (M)

N 00°08'03" W
2687.47' (M)

N 00°08'17" E
1355.50' (M)

S. 1/16 COR.
SEC. 25 & SEC. 26
T2N, R68W
FOUND 2 1/2" ALUM. CAP
P.L.S. NO. 38512

NW. COR.
SEC. 35, T2N, R68W
FOUND 3 1/4" ALUM. CAP
ILLEGIBLE

S 89°36'24" W 2645.22' (M)

HEEL LOCATION
2123'

N. 1/4 COR.
SEC. 35, T2N, R68W
FOUND 3 1/4" BRASS CAP
ILLEGIBLE

S 89°36'08" W 2642.90' (M)

NE. COR.
SEC. 35, T2N, R68W
FOUND 2" ALUM. CAP
ILLEGIBLE

W. 1/4 COR.
SEC. 35, T2N, R68W
FOUND 3 1/4"
ALUM. CAP
P.L.S. NO. 18482

NELSON 35-19HZ

SURFACE LOCATION

35

CENTER 1/4 COR.
SEC. 35, T2N, R68W
FOUND 2 1/2" ALUM. CAP
P.L.S. NO. 38065

20'27" 7°45'



NOTE:
MAGNETIC NORTH IS
CURRENT AS OF 12/9/2019.
MAGNETIC NORTH CHANGES
WEST 0°06' PER YEAR.
MAGNETIC MODEL: WMM-2020.

0 1000' 2000'

SCALE: 1" = 1000'

NOTES:

- ▲ INDICATES SECTION CORNER.
- INDICATES CALCULATED CORNER.
- DRAWING LATITUDE AND LONGITUDE COORDINATES ARE NAD 83 (2011)(EPOCH:2010).
- ELEVATION BASED ON NAVD88 (GEOID12B).
- BASIS OF BEARING DERIVED FROM COLORADO COORDINATE SYSTEM OF 1983 NORTH ZONE.
- ALL MEASURED DISTANCES ARE GRID.
- COMBINED SCALE FACTOR: .99972700 CALCULATED FROM THE N. 1/4 CORNER OF SECTION 26, T2N, R68W.
- OPERATOR: NICK KACZMARCZYK / PDOP = 1.4.
- SEE ADDENDUM TO WELL LOCATION CERTIFICATE FOR EXISTING IMPROVEMENTS WITHIN 500' OF THE WELL PAD.
- WELL FOOTAGES ARE MEASURED AT RIGHT ANGLES TO THE SECTION LINES.
- THE BOTTOM OF HOLE BEARS N00°40'12"W, 8218' FROM THE HEEL LOCATION.

CERTIFICATE OF SURVEYOR:
THIS IS TO CERTIFY THAT THE ABOVE PLAT WAS PREPARED FROM FIELD NOTES OF ACTUAL SURVEY MADE BY ME OR UNDER MY SUPERVISION AND THAT THE SAME ARE TRUE AND CORRECT TO THE BEST OF MY KNOWLEDGE AND BELIEF. THIS CERTIFICATE DOES NOT REPRESENT A LAND SURVEY PLAT OR IMPROVEMENT SURVEY PLAT AS DEFINED BY R.C.S. 19-51-302 AND CANNOT BE RELIED UPON TO DETERMINE OWNERSHIP.

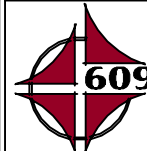
Randall K. French
38512
PROFESSIONAL LAND SURVEYOR
1/10/2020
RANDALL K. FRENCH
PROFESSIONAL LAND SURVEYOR
COLORADO REGISTRATION NUMBER: 38512

NOTICE:
ACCORDING TO COLORADO STATE LAW YOU MUST COMPLY WITH CERTAIN ACTION BASED UPON ANY DEFECT IN THIS SURVEY WITHIN THREE YEARS AFTER YOU FIRST DISCOVER SUCH DEFECT. IN NO EVENT MAY ANY ACTION BASED UPON ANY DEFECT IN THIS SURVEY BE COMMENCED MORE THAN TEN YEARS FROM THE DATE ON THE CERTIFICATION SHOWN HEREON.

WELL PAD - NELSON 28-35HZ

NELSON 35-19HZ
WELL LOCATION CERTIFICATE
336' FNL & 2084' FWL NENW (SURFACE)
LOCATED IN SECTION 35
98' FSL & 2123' FWL SESW (HEEL)
LOCATED IN SECTION 26
2311' FNL & 2044' FWL SENW (BOTTOM)
LOCATED IN SECTION 23
T2N, R68W, 6TH P.M.
WELD COUNTY, COLORADO

Kerr-McGee Oil &
Gas Onshore L.P.
1099 18th Street
Denver, Colorado 80202



CONSULTING, LLC

SHERIDAN OFFICE
1095 Saberton Avenue
Sheridan, Wyoming 82801
Phone 307-674-0609

LOVELAND OFFICE
6706 North Franklin Avenue
Loveland, Colorado 80538
Phone 970-776-4331

DRAFTED BY:	LMO	CHECKED BY:	RKF	SHEET NO:
DATE DRAFTED:	2/12/19	DATE SURVEYED:	12/9/19	1
REVISED:	1/10/2020	FILE NAME:	16-193	1 OF 2

T2N, R68W

N. 1/4 COR.
SEC. 23, T2N, R68W
FOUND 2 1/2" ALUM. CAP
ILLEGIBLE

NW. COR.
SEC. 23, T2N, R68W
FOUND 3 1/4" ALUM. CAP
ILLEGIBLE

NE. COR.
SEC. 23, T2N, R68W
FOUND 2 1/2" ALUM. CAP
P.L.S. NO. 29415

SURFACE LOCATION: NAD 83
GROUND ELEVATION= 4952.7'
LATITUDE= 40.101355°
LONGITUDE= -104.972441°
LATITUDE= 40°06'04.876"
LONGITUDE= -104°58'20.788"
HEEL LOCATION: NAD 83
LATITUDE= 40.102547°
LONGITUDE= -104.972299°
LATITUDE= 40°06'09.169"
LONGITUDE= -104°58'20.277"
BOTTOM HOLE LOCATION: NAD 83
LATITUDE= 40.125105°
LONGITUDE= -104.972468°
LATITUDE= 40°07'30.378"
LONGITUDE= -104°58'20.885"

BOTTOM OF HOLE:
2311' FNL & 2044' FWL

2044'

23

W. 1/4 COR.
SEC. 23, T2N, R68W
FOUND TWO 3 1/4" ALUM. CAP
REFERENCE MONUMENTS
P.L.S. NO. 29430

S 89°42'48" W
2619.41' (M)

S 89°42'15" W
2644.29' (M)

E. 1/4 COR.
SEC. 23, T2N, R68W
FOUND 3 1/4" ALUM. CAP
L.S. NO. 38106

SW. COR.
SEC. 23, T2N, R68W
FOUND TWO 3 1/4" ALUM. CAP
REFERENCE MONUMENTS
P.L.S. NO. 29430

S 89°29'19" W 2643.63' (M)

S. 1/4 COR.
SEC. 23, T2N, R68W
FOUND 3 1/4" BLM
BRASS CAP

S 89°44'49" W
1319.77' (M)

E. 1/16 COR.
SEC. 23 & SEC. 26
T2N, R68W
FOUND 3 1/4" ALUM. CAP
L.S. NO. 34995

S 89°44'08" W
1319.83' (M)

SE. COR.
SEC. 23, T2N, R68W
FOUND 3 1/4" BLM
BRASS CAP

MATCH LINE
SEE SHEET 1

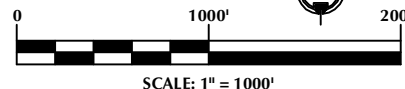
CERTIFICATE OF SURVEYOR:

THIS IS TO CERTIFY THAT THE ABOVE PLAT WAS PREPARED FROM FIELD NOTES OF ACTUAL SURVEY MADE BY ME OR UNDER MY SUPERVISION AND THAT THE SAME ARE TRUE AND CORRECT TO THE BEST OF MY KNOWLEDGE AND BELIEF. THIS CERTIFICATE DOES NOT REPRESENT A LAND SURVEY PLAT OR IMPROVEMENT SURVEY PLAT AS DEFINED BY R.C.S. 19-51-102 AND CANNOT BE RELIED UPON TO DETERMINE OWNERSHIP.

Randall K. French
PROFESSIONAL LAND SURVEYOR
1/10/2020
COLORADO REGISTRATION NUMBER: 38512

NOTICE:
ACCORDING TO COLORADO STATE LAW YOU MUST COMPLY WITH ALL APPLICABLE ACTIONS BASED UPON ANY DEFECT IN THIS SURVEY WITHIN THREE YEARS AFTER YOU FIRST DISCOVER SUCH DEFECT. IN NO EVENT MAY ANY ACTION BASED UPON ANY DEFECT IN THIS SURVEY BE COMMENCED MORE THAN TEN YEARS FROM THE DATE ON THE CERTIFICATION SHOWN HEREON.

NOTE:
MAGNETIC NORTH IS
CURRENT AS OF 12/9/2019.
MAGNETIC NORTH CHANGES
WEST 0°06' PER YEAR.
MAGNETIC MODEL: WMM-2020.



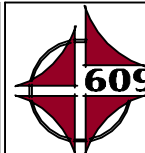
NOTES:

- ▲ INDICATES SECTION CORNER.
- INDICATES CALCULATED CORNER.
- DRAWING LATITUDE AND LONGITUDE COORDINATES ARE NAD 83 (2011)(EPOCH:2010).
- ELEVATION BASED ON NAVD88 (GEOID12B).
- BASIS OF BEARING DERIVED FROM COLORADO COORDINATE SYSTEM OF 1983 NORTH ZONE.
- ALL MEASURED DISTANCES ARE GRID.
- COMBINED SCALE FACTOR: .99972700 CALCULATED FROM THE N. 1/4 CORNER OF SECTION 26, T2N, R68W.
- OPERATOR: NICK KACZMARCZYK / PDOP = 1.4.
- SEE ADDENDUM TO WELL LOCATION CERTIFICATE FOR EXISTING IMPROVEMENTS WITHIN 500' OF THE WELL PAD.
- WELL FOOTAGES ARE MEASURED AT RIGHT ANGLES TO THE SECTION LINES.
- THE BOTTOM OF HOLE BEARS N00°40'12"W, 8218' FROM THE HEEL LOCATION.

WELL PAD - NELSON 28-35HZ

NELSON 35-19HZ
WELL LOCATION CERTIFICATE
336' FNL & 2084' FWL NENW (SURFACE)
LOCATED IN SECTION 35
98' FSL & 2123' FWL SESW (HEEL)
LOCATED IN SECTION 26
2311' FNL & 2044' FWL SENW (BOTTOM)
LOCATED IN SECTION 23
T2N, R68W, 6TH P.M.
WELD COUNTY, COLORADO

Kerr-McGee Oil &
Gas Onshore L.P.
1099 18th Street
Denver, Colorado 80202



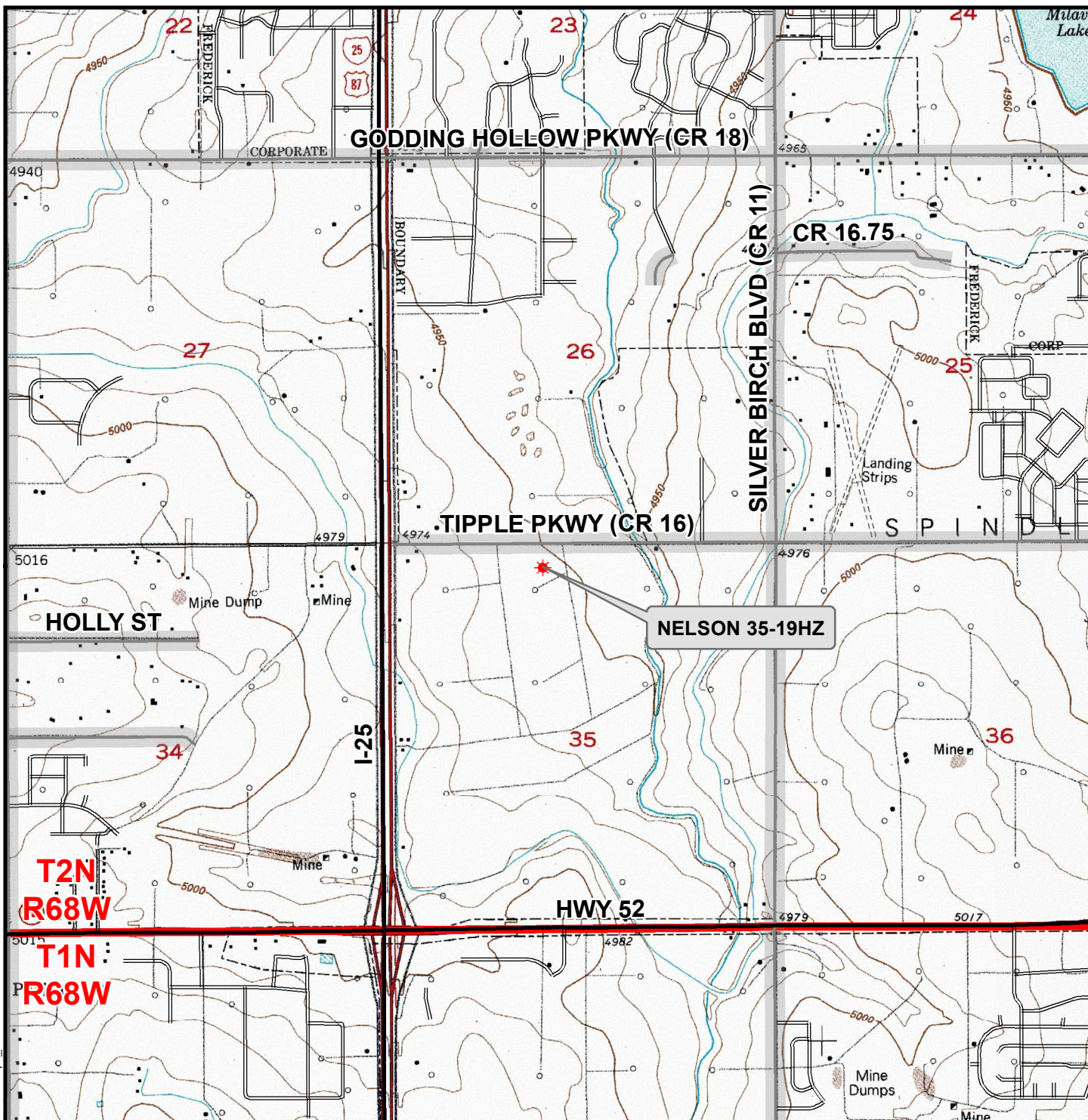
CONSULTING, LLC

SHERIDAN OFFICE
1095 Saberton Avenue
Sheridan, Wyoming 82801
Phone 307-674-0609

LOVELAND OFFICE
6706 North Franklin Avenue
Loveland, Colorado 80538
Phone 970-776-4331

DRAFTED BY:	LMO	CHECKED BY:	RKF	SHEET NO:
DATE DRAFTED:	2/12/19	DATE SURVEYED:	12/9/19	2
REVISED:	1/10/2020	FILE NAME:	16-193	2 OF 2

K:\ANADARKO\2016\2016-193_NELSON_T2N_R68W_SEC_35\GIS\Maps_ABC\NELSON 28-35HZ\NELSON 35-19HZ.mxd 1/18/2020 4:51:19 PM



Legend

- ★ Well - Proposed === Road - Primitive - Existing — Road - County - Existing
— Road - Improved - Existing — Road - Highway - Existing

WELL PAD - NELSON 28-35HZ
GENERAL LOCATION MAP
NELSON 35-19HZ
LOCATED IN SECTION 35
T2N, R68W, 6th P.M.
WELD COUNTY, COLORADO

**Kerr-McGee Oil &
Gas Onshore L.P.**

1099 18th Street
Denver, Colorado 80202



CONSULTING, LLC

SHERIDAN OFFICE
1095 Saberton Avenue
Sheridan, Wyoming 82801
Phone 307-674-0609

LOVELAND OFFICE
6706 North Franklin Avenue
Loveland, Colorado 80538
Phone 970-776-4331



SCALE: 1" = 2,000ft

NAD83 CO-Nft

DRAWN: DP

DATE: 10 Jan 2020

REVISED:

DATE: