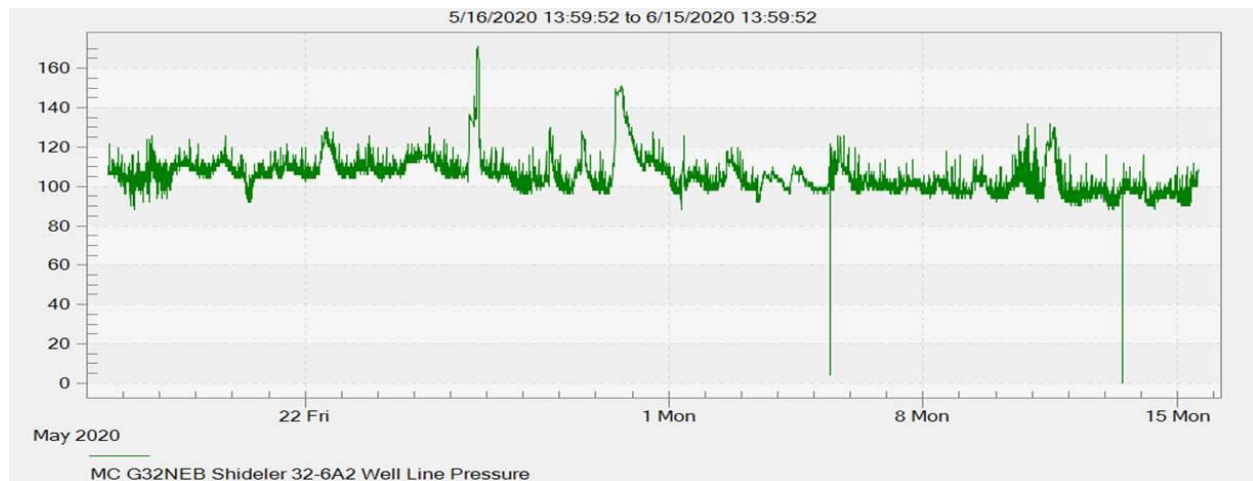


Pad	Well Name	API
G32NEB	SHIDELER 32- 6A2	5045080610000



Bradenhead Tied into sales:

1/2" nipple out of Tee.

1/2" Tee with 1/2" nipple and ball valve below to check integrity of check valve.

1/2" x 3/8" bushing reducer for Check valve.

Stainless check valve #1

3/8" or 1/2" stainless coming off 1/2" ball valve.

1/2" x 1" bushing reducer for Little Joe Regulator upstream

Little Joe Regulator 627 70-150psig outlet pressure

1/2" x 1" bushing reducer for Little Joe Regulator downstream

1/2" nipple

1/2" check valve

1/2" nipple

1/2" ball valve to tie into 2" flowline/sales line

1/2" nipple

2" tapped bull plug

2" flowline/ sales line