



Gamma Ray

LWD MEMORY LOG

Scale:

1:240

True Vertical Depth

Depth Reference:

Driller's Depth

Status:

Final Print

API No: 05-123-48588-00

Job ID: 110346240

Permanent Datum (P.D.): Mean Sea Level

Log Measured From: Rig Floor

Dates

From: 2020-04-07
To: 2020-04-09
Spud: 2020-03-19

Drilled (ft) 1943.00
Top: 1943.00
Bottom: 17587.00

Logged (ft) 1943.00
Top: 1943.00
Bottom: 17575.00

Azi Reference North: 66.62
Total Magnetic Field Strength: (nT) 51994
Mag to Reference North Correction: (deg) 7.37

Interval

Magnetic Field Reference

Borehole Record

Casing Record

Hole Size (in)	From (ft)	To (ft)	Size (in)	Weight (lb/ft)	From (ft)	To (ft)
13.500	30.00	1943.00	9.625	36.00	30.00	1933.00
8.500	1943.00	17587.00				

Mud Record

Deviation Record

Type	From (ft)	To (ft)	Hole Size (in)	Interval (ft)	Inc Az (Start)	Inc Az (End)
Oil Based Mud	1943.00	17587.00	8.500	15643.00	0.28 207.44	89.45 181.82

Acquisition System

Software Version

Other

Cadence Plot Studio	RT 5.5 5.5.8765.1	Rig: H&P 517 Contractor: Helmerich & Payne Drilling Co District: RMA	Unit: D&E
---------------------	----------------------	--	-----------

(C) 2019 Baker Hughes Company - All rights reserved. Baker Hughes Company and its affiliates ("BHC") provides this information on an "as is" basis for general information purposes and believes it to be accurate as of the date of publication. BHC does not make any representation as to the accuracy or completeness of the information and makes no warranties of any kind, specific, implied or oral, to the fullest extent permissible by law, including those of merchantability and fitness for a particular purpose or use. BHC hereby disclaims any and all liability for any direct, indirect, consequential or special damages, claims for lost profits, or third party claims arising from the use of the information, whether a claim is asserted in contract, tort, or otherwise. The BHC logo is a trademark of Baker Hughes Company.

Log Run Summary

Run No	Bit Run No.	Bit Size (in)	Bit Type	Bit Gauge Length (in)	Assembly Type	Logged Interval		Bit Depth Interval		Date / Time		Circ. Hours (h)
						Top (ft)	Bottom (ft)	From (ft)	To (ft)	Start Logging	End Logging	
1	1	8.500	PDC	3.00	Rotary Steerable	1943.00	17575.00	1943.00	17587.00	2020-04-07 08:10	2020-04-09 12:50	58.30

Crew

Name	Arrive Wellsite	Depart Wellsite	Name	Arrive Wellsite	Depart Wellsite	Name	Arrive Wellsite	Depart Wellsite
Adam Schlenz	2020-04-06	2020-04-10						

Mud Properties Record											
Date / Time	Run No.	Depth (ft)	Mud Type	Density (ppg)	Viscosity (cP)	pH	Fluid Loss (cm3)	Oil / Water	Source	Total Chlorides (ppm)	K+ (%)
2020-04-07 03:30	1	1944.00	Oil Based Mud	10.0	19	N/A	19.5	68.5/17	Active Pit	25267	0.00
2020-04-07 15:30	1	3934.00	Oil Based Mud	9.5	13	N/A	19.6	69/18	Active Pit	25267	0.00
2020-04-08 03:30	1	7494.00	Oil Based Mud	9.7	13	N/A	19.2	69.5/17	Active Pit	25267	0.00
2020-04-08 15:30	1	11745.00	Oil Based Mud	9.8	12	N/A	19.4	70/16	Active Pit	25267	0.00

Equipment and Service Data							
Run No.	Tool	Serial Number	Measurement	Sensor Offset (ft)	Bit Offset (ft)	Max O.D. (in)	Min I.D. (in)
1	AutoTrak Curve Steering Unit	14382368	Near Bit Inclination	5.93	6.73	7.000	4.330
1	AutoTrak Curve Steering Unit	14382368	Near Bit VSS	5.93	6.73	7.000	4.330
1	AutoTrak Curve MWD	12304786	Gamma (single)	2.75	12.89	7.000	3.250
1	AutoTrak Curve MWD	12304786	Directional (mag)	12.27	22.41	7.000	3.250

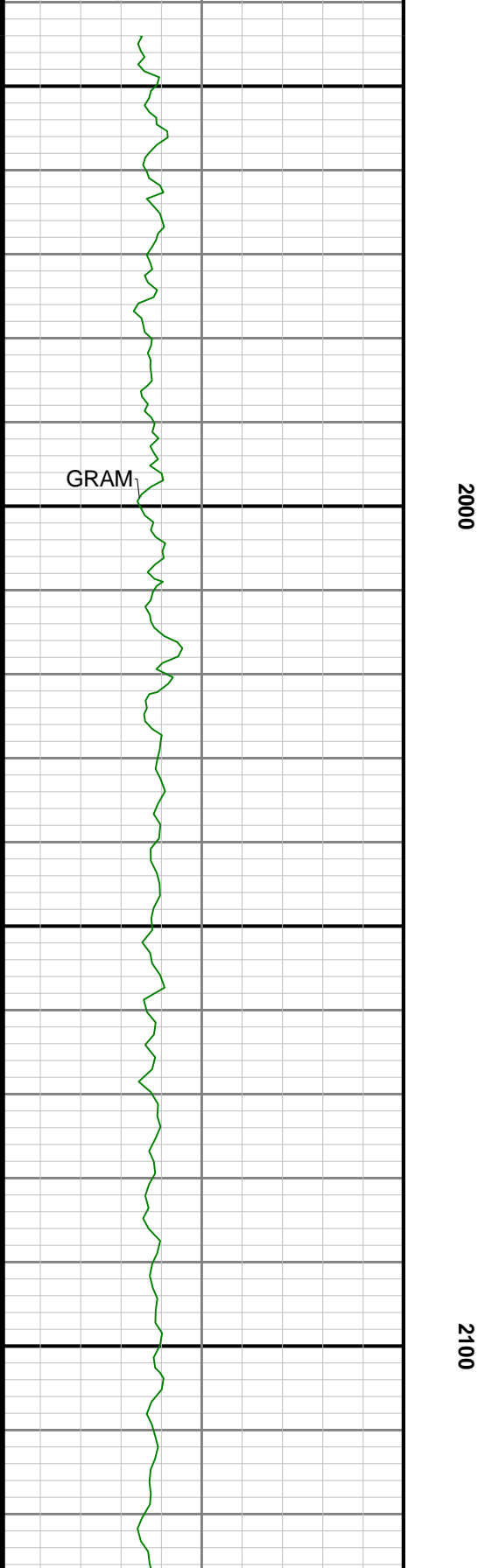
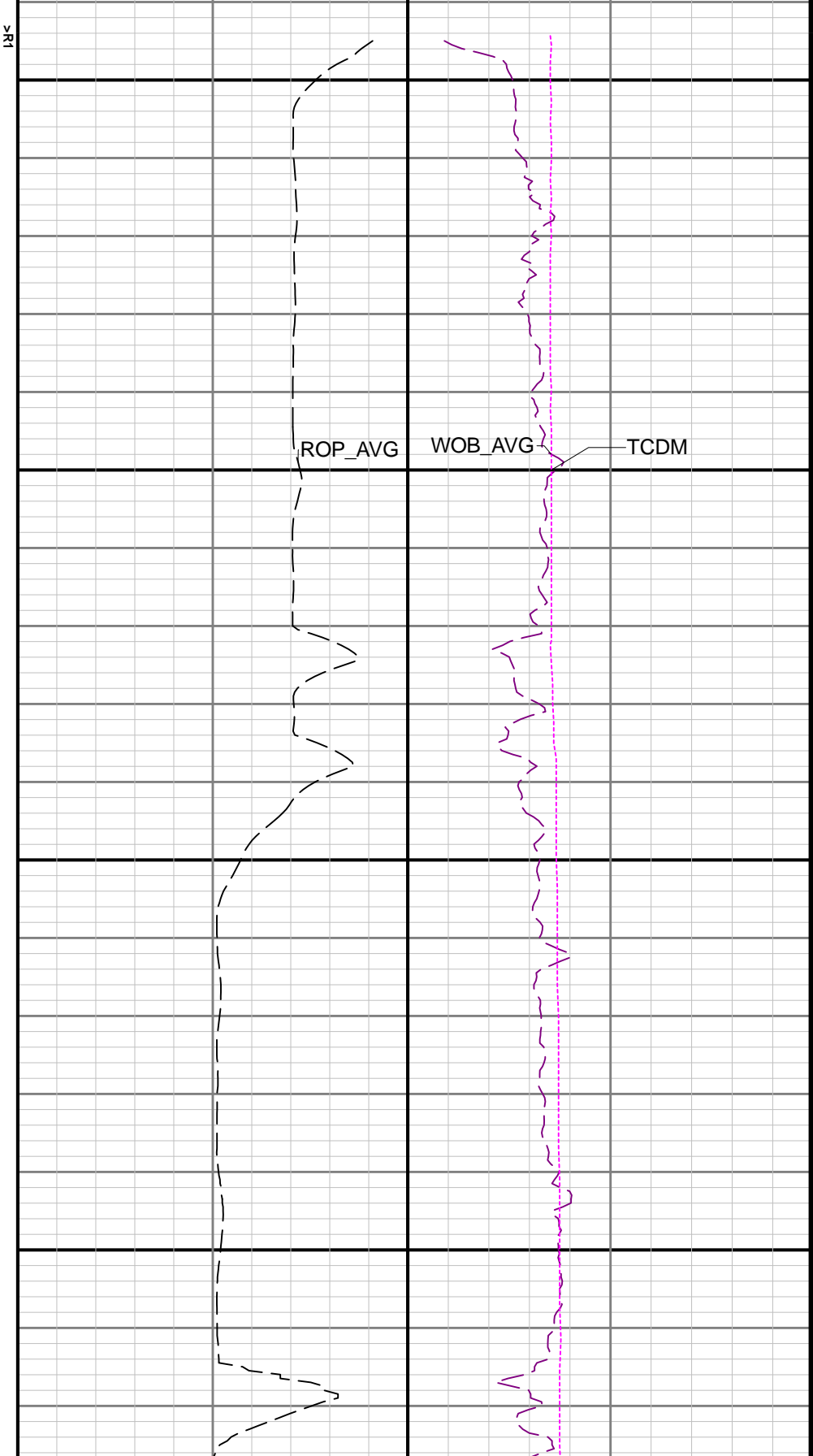
Service and Tool Mnemonics		
Mnemonic	Name	Description
ATC SU	AutoTrak Curve SU	Auto Trak Curve Steering Unit
ATC MWD	AutoTrak Curve MWD	Auto Trak Curve MWD
ATC LCPM	AutoTrak Curve LCPM	Auto Trak Curve LCPM

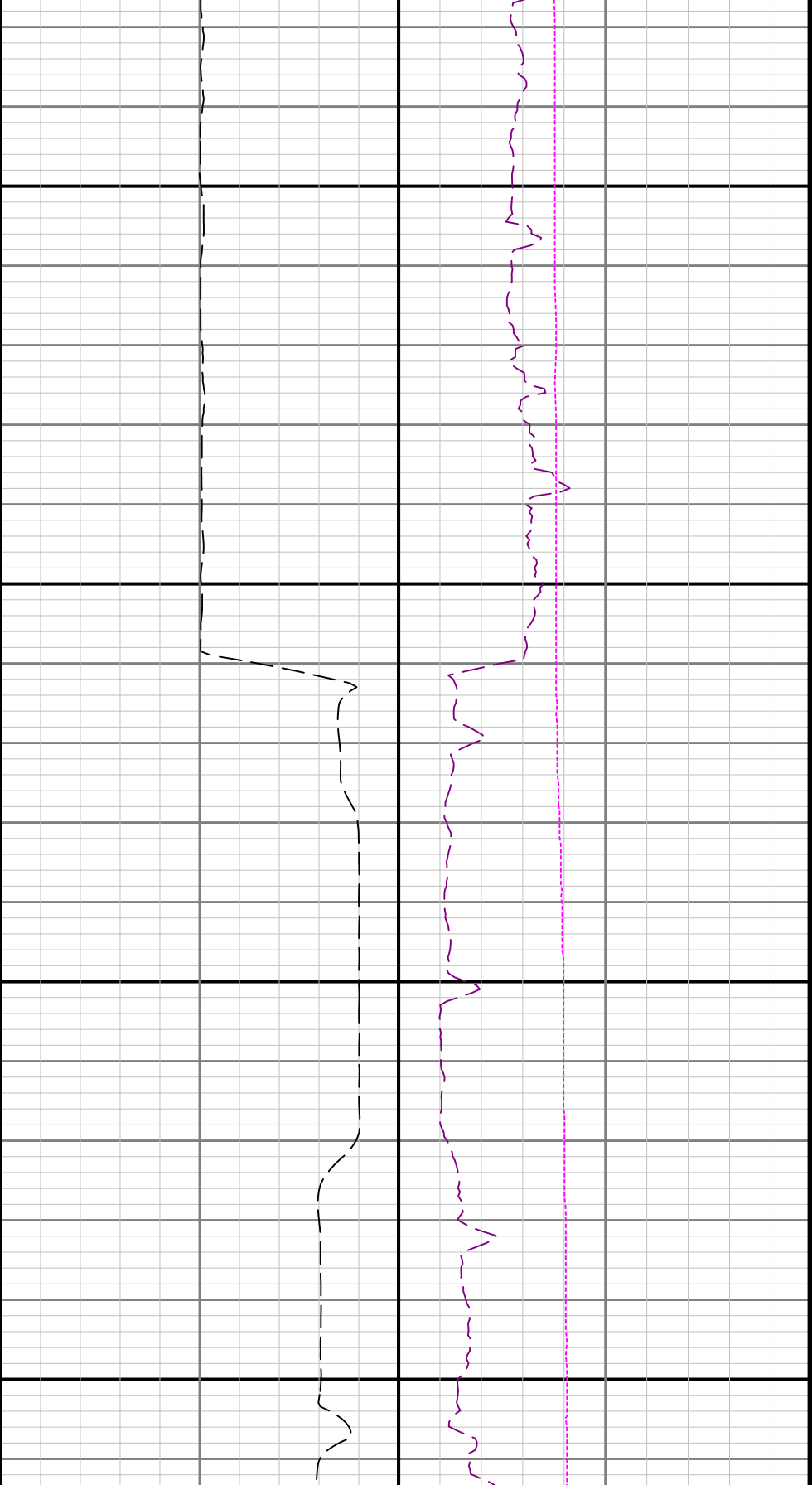
Comments
1 Depth measurements were obtained from a depth control system not supplied or operated by Baker Hughes. Due to the lack of control by Baker Hughes, depth calibrations and measurements could not be independently verified.
2 Baker Hughes LWD run 1 utilized a 6.75 inch NaviGamma service (Directional and Gamma Ray) behind a 8.5 inch bit and rotary steerable assembly from 1943 to 17587 feet MD (1943 to 6847 feet TVD).
3 The Gamma Ray Apparent (GRAM) data is presented 0 to 300 API, per the customer's request.

Remarks				
Number	Depth (ft)	Hole Section (in)	Run No.	Remark

Curve Mnemonics			
Presented Curves		Description	Units
ROP_AVG		Rate of Penetration 3 ft Average	ft/h
WOB_AVG		Weight On Bit 1 ft Average	klb
GRAM		Gamma Ray - Apparent - Memory 0.5 ft Average	API
TCDM		Directional Real-Time Survey Temperature	degF

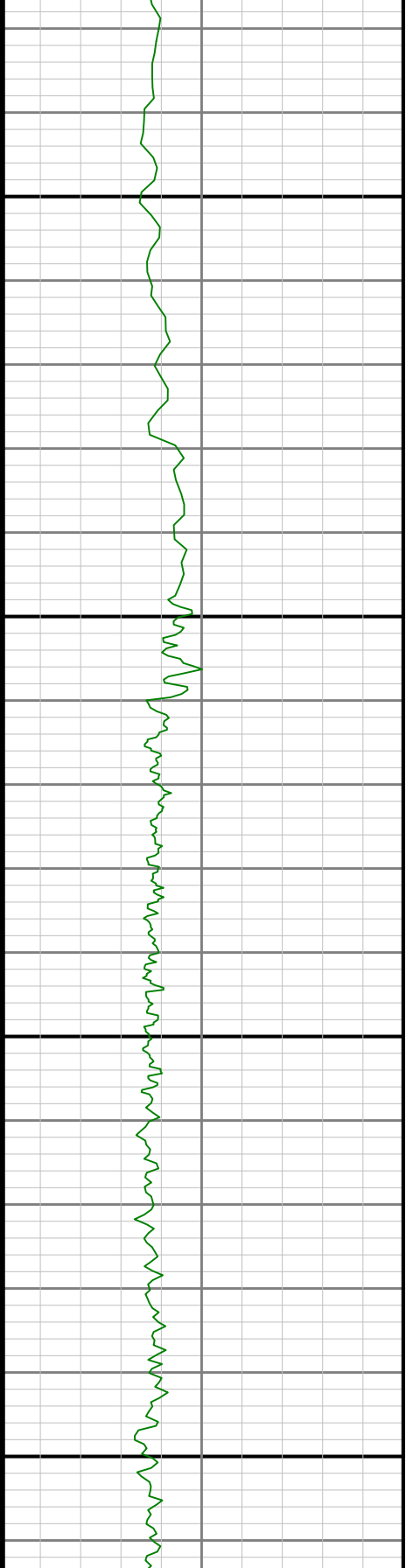
Gamma Ray - Apparent 0.5 ft Average GRAM 0300		TVD 1:240 feet	Rate of Penetration 3 ft Average ROP_AVG 10000		Weight On Bit 1 ft Average WOB_AVG 050	
API			ft/h		klb	
					Downhole Temperature TCDM 0300	
		9 5/8" Casing			degF	

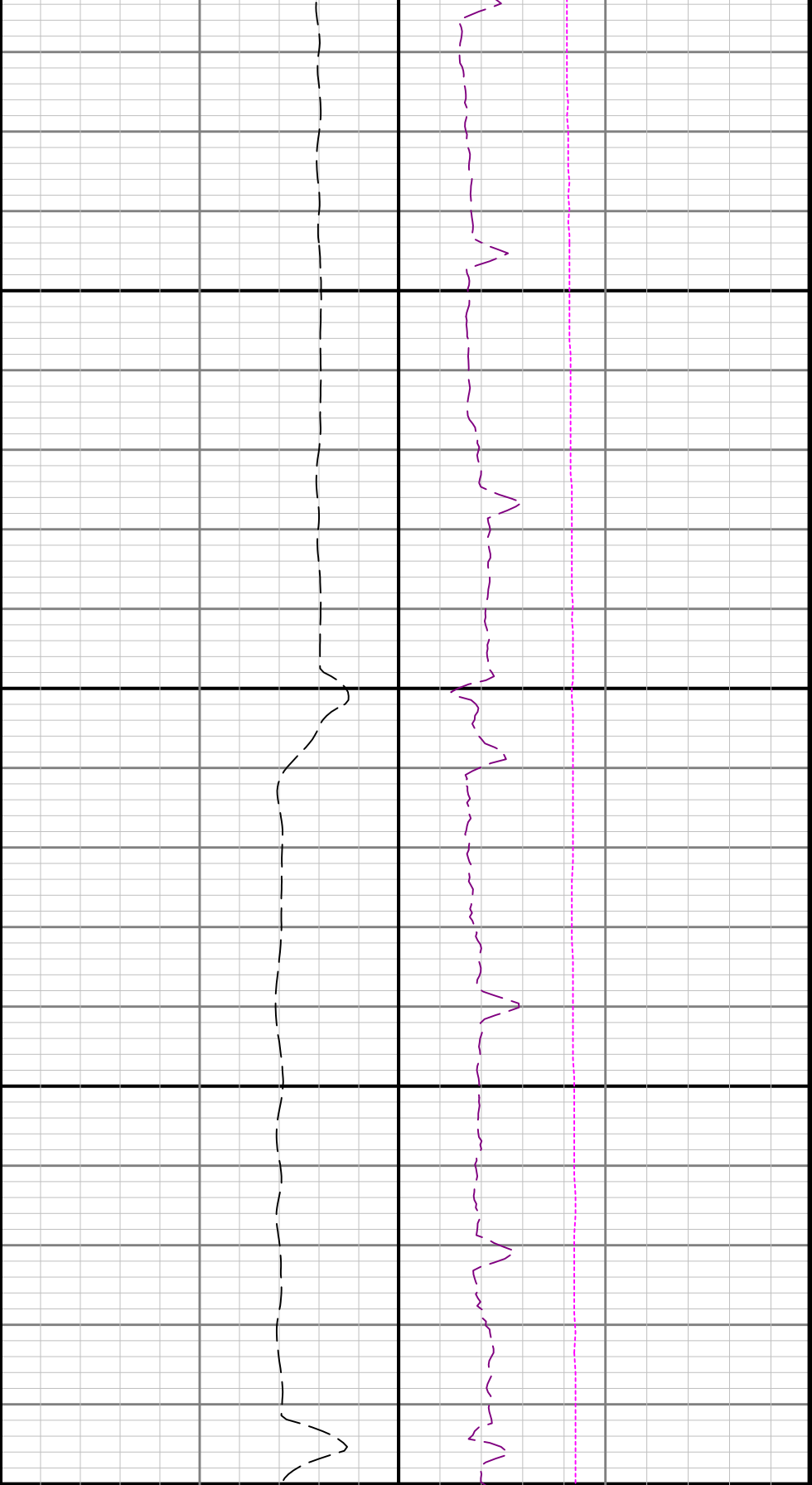




2200

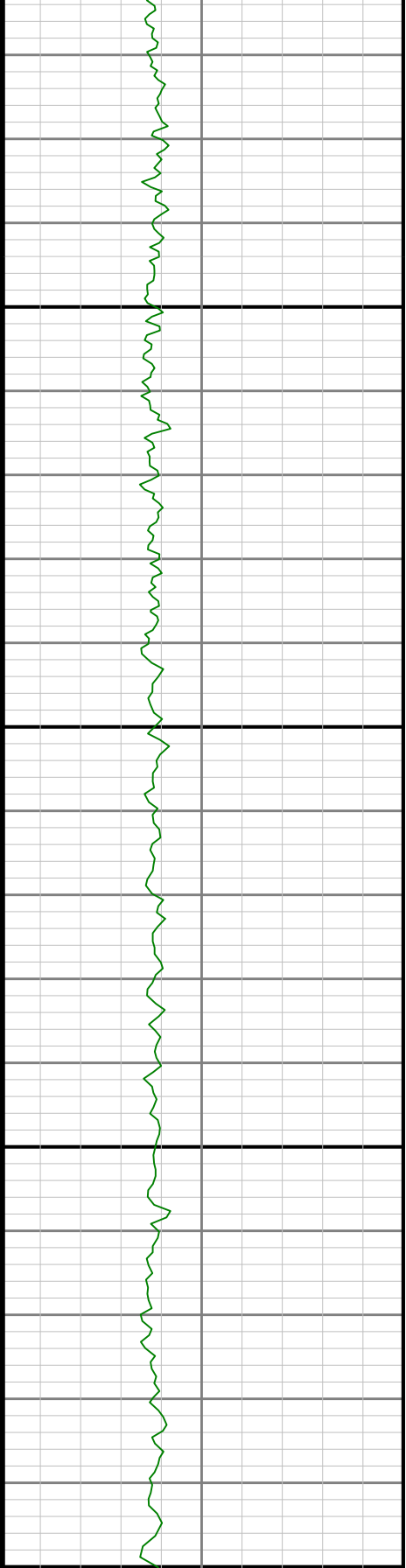
2300

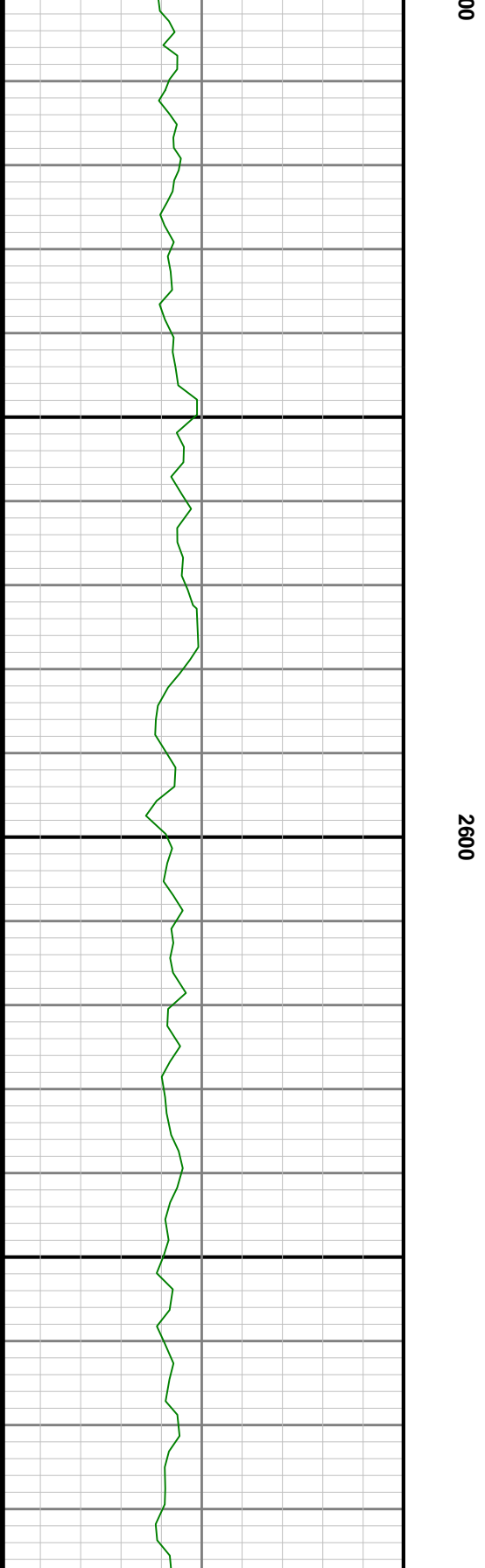
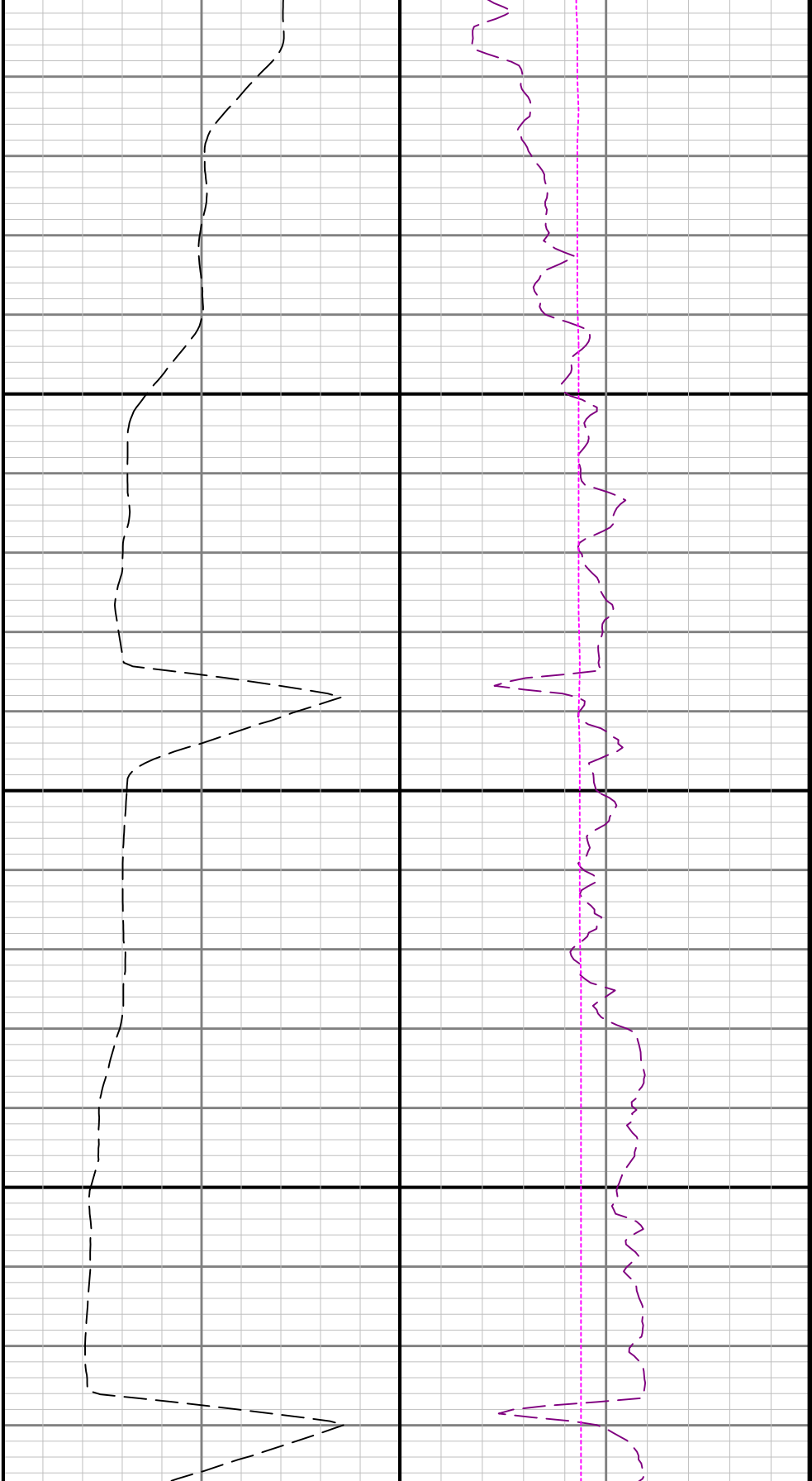


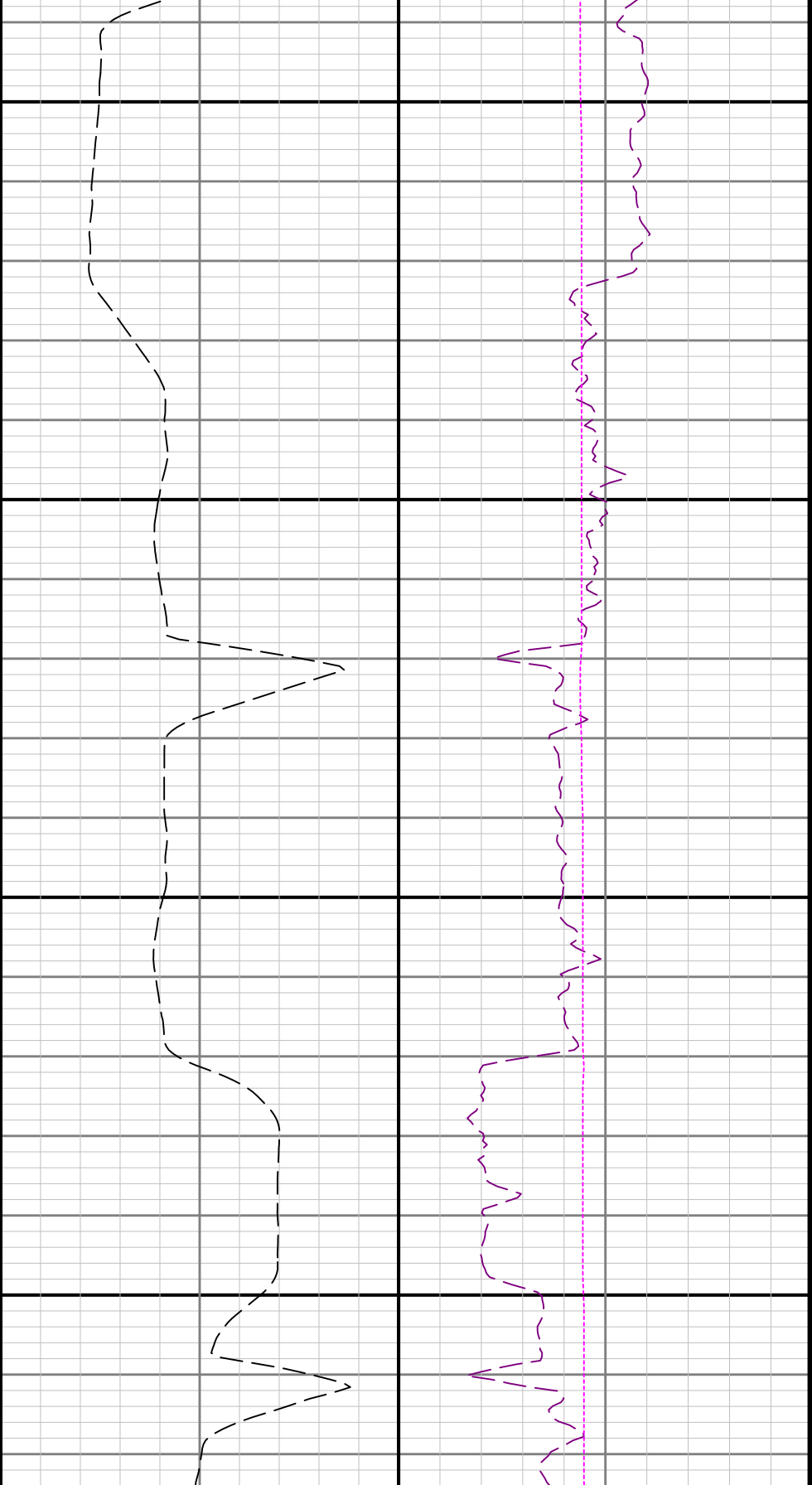


2400

25

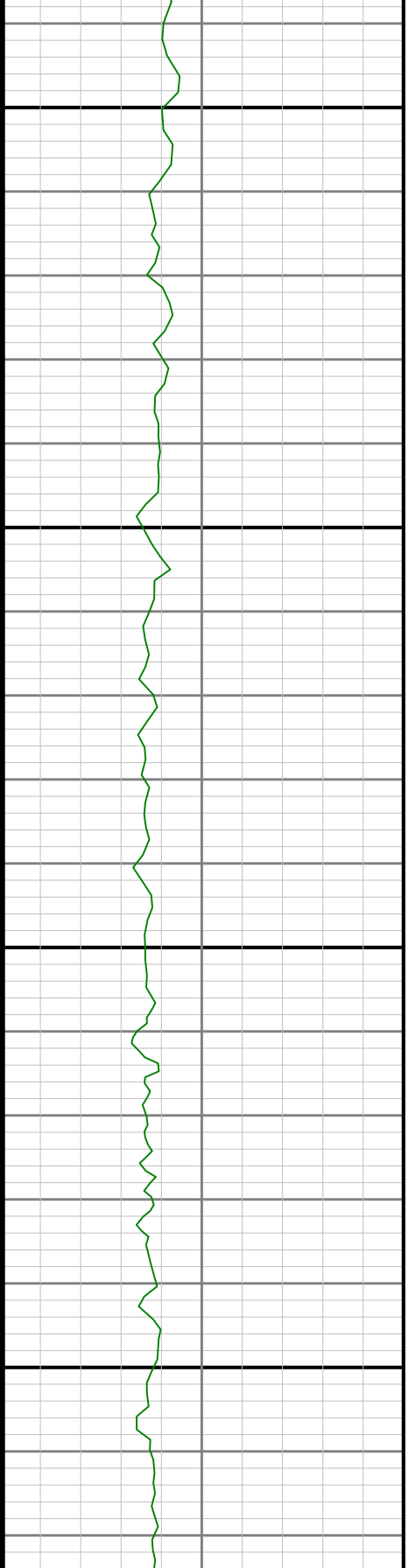


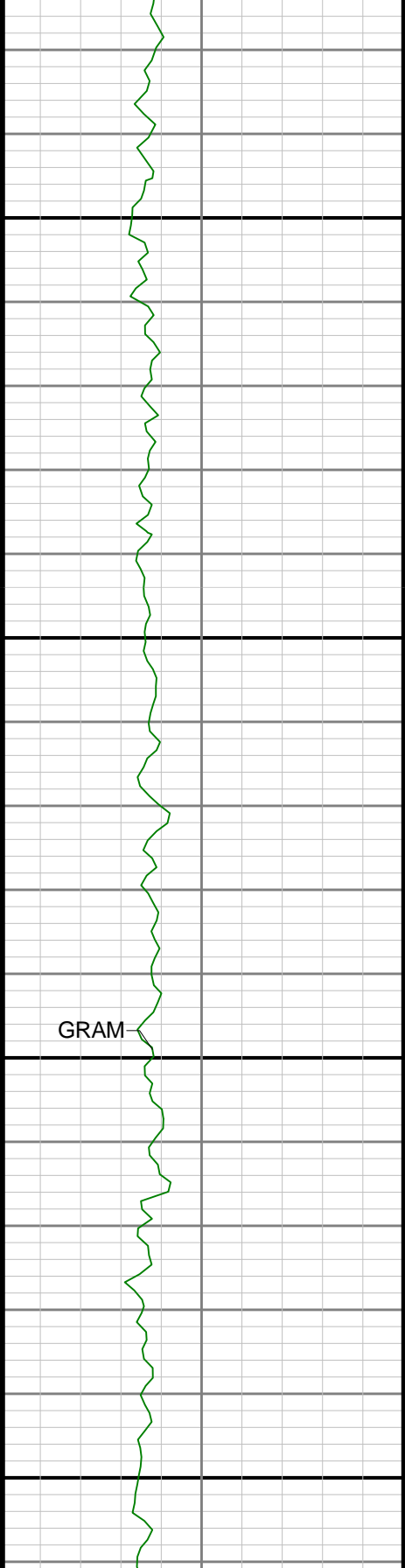




2700

2800

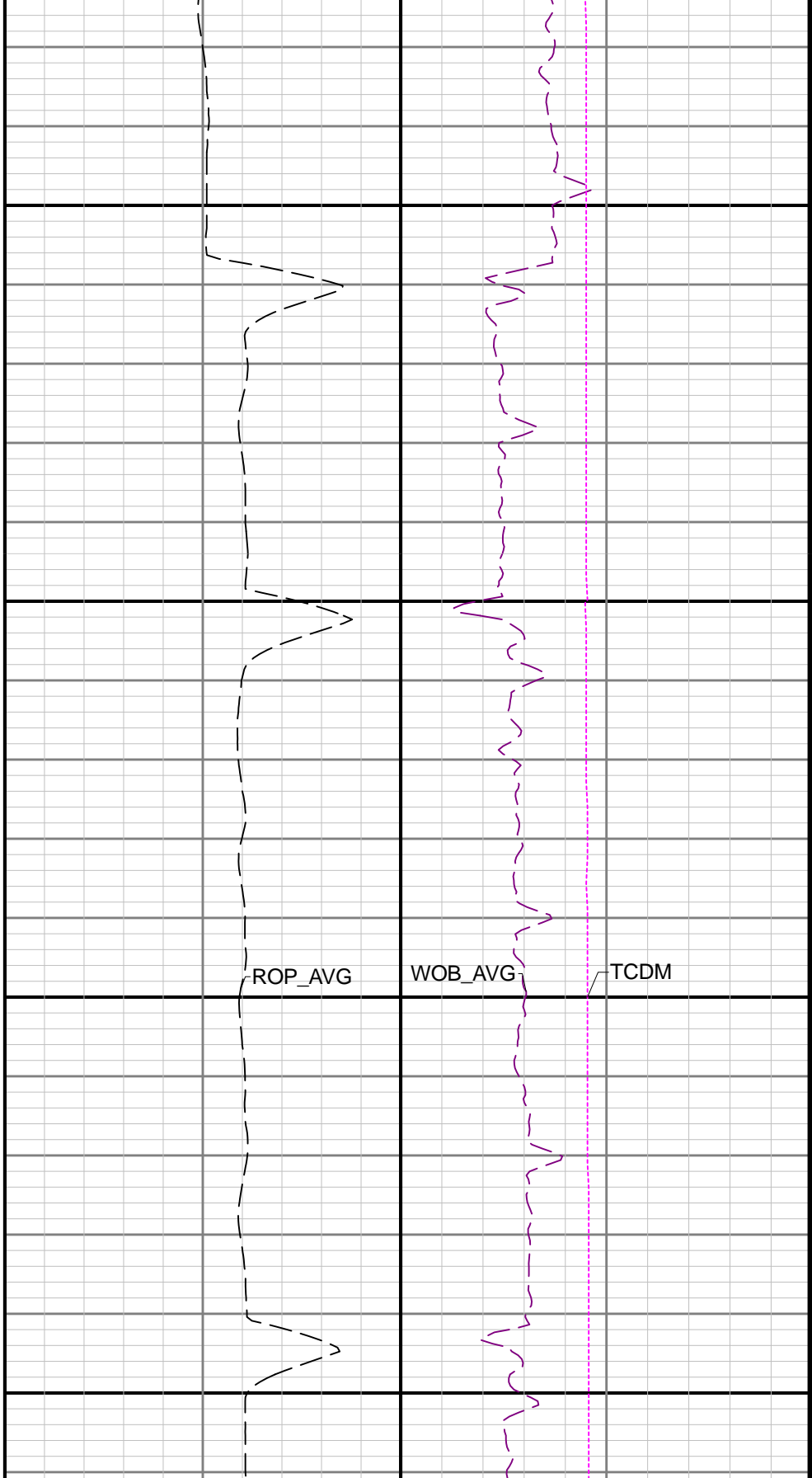




2900

3000

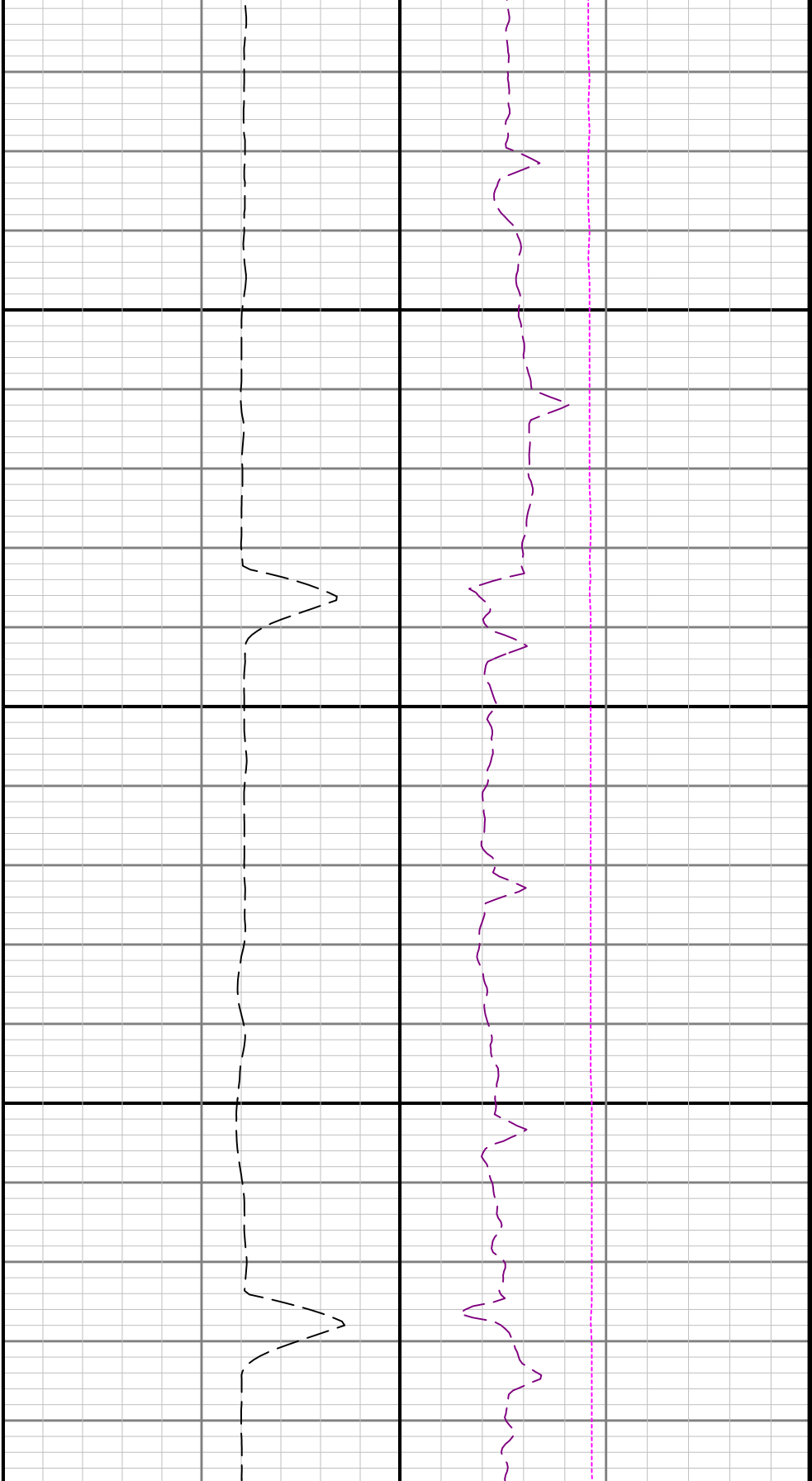
GRAM



ROP_AVG

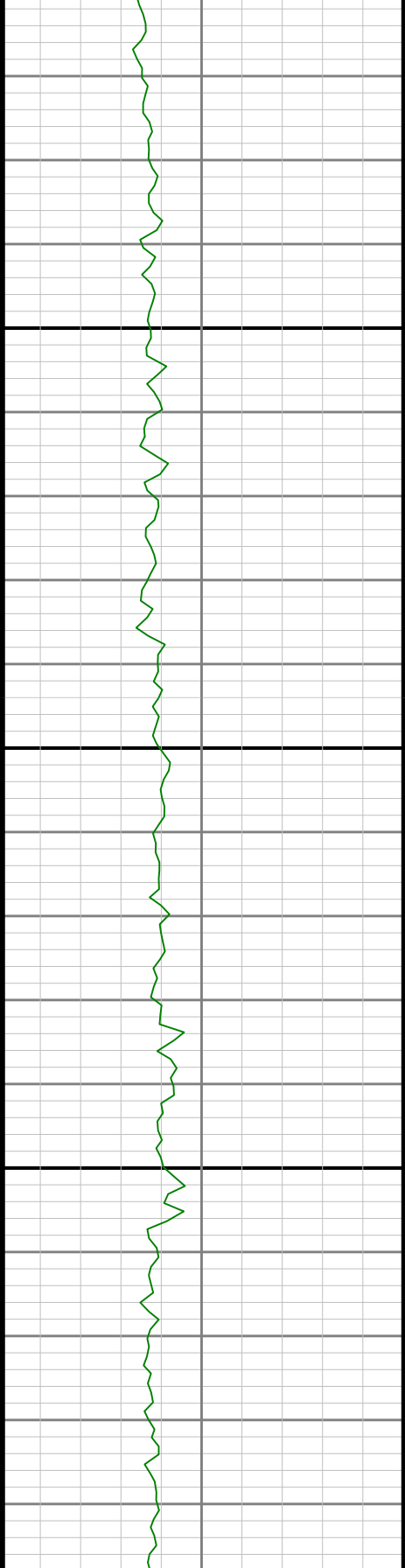
WOB_AVG

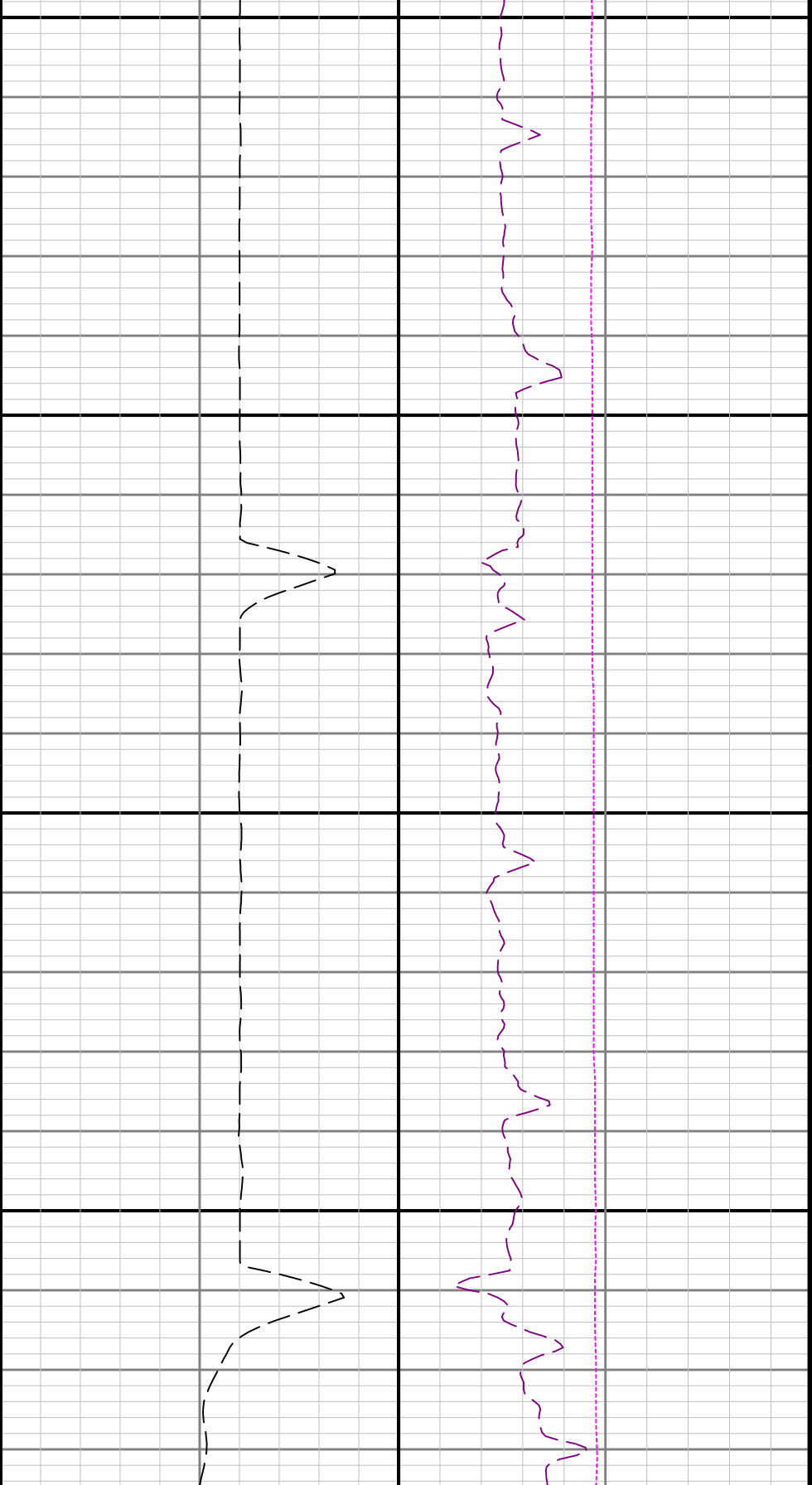
TCDM



3100

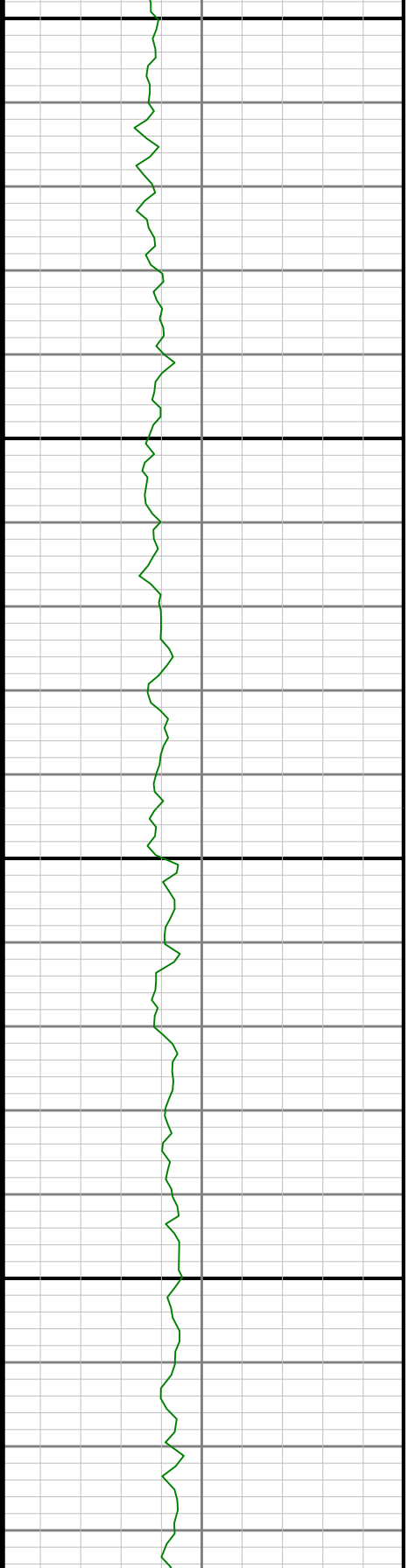
3200

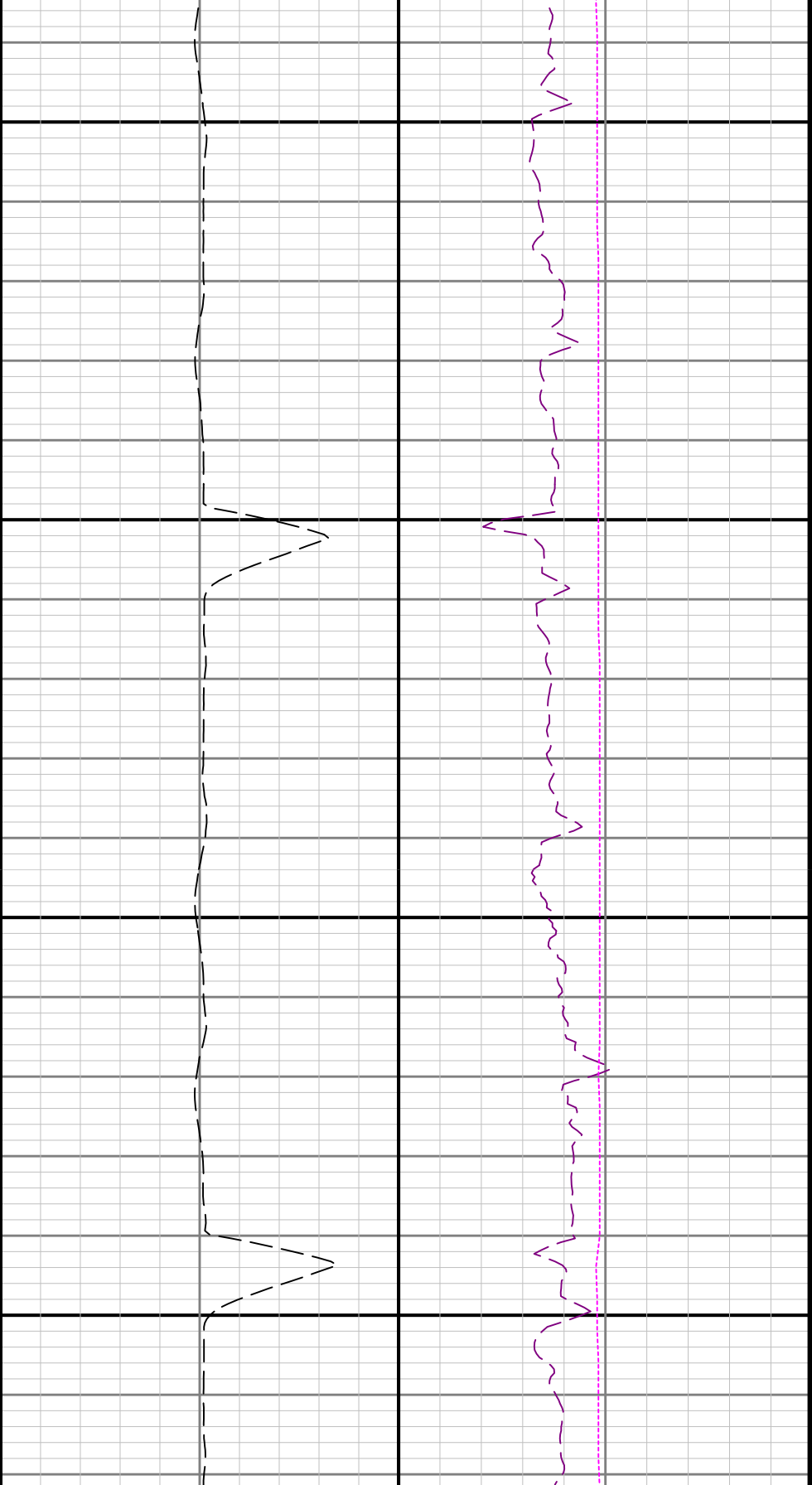




3300

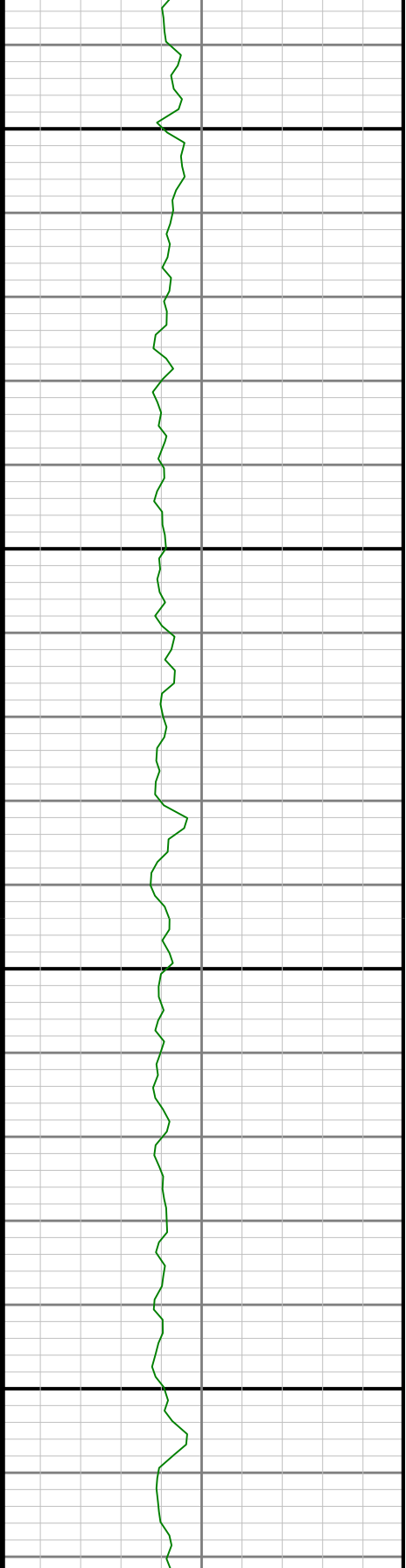
3400

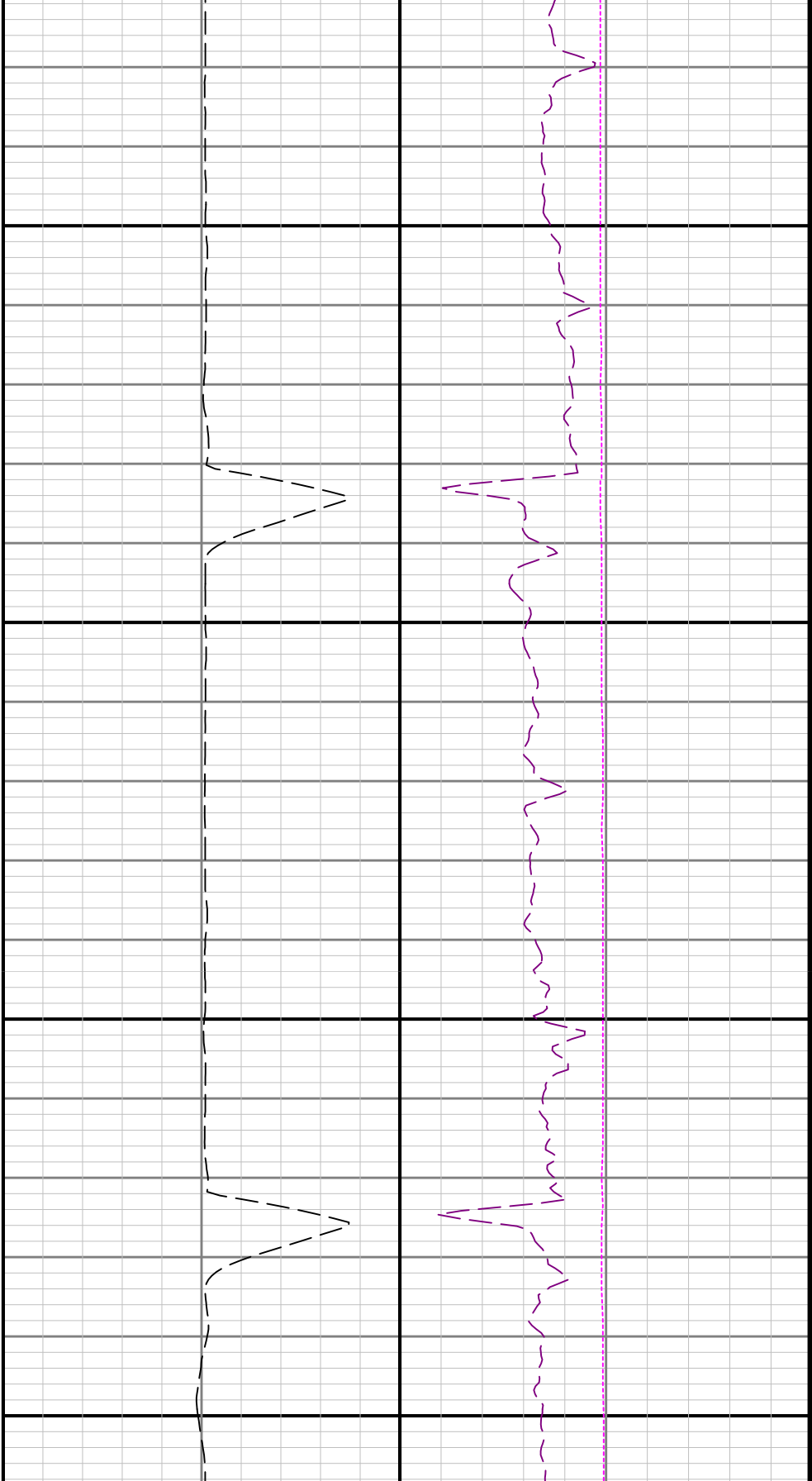




3500

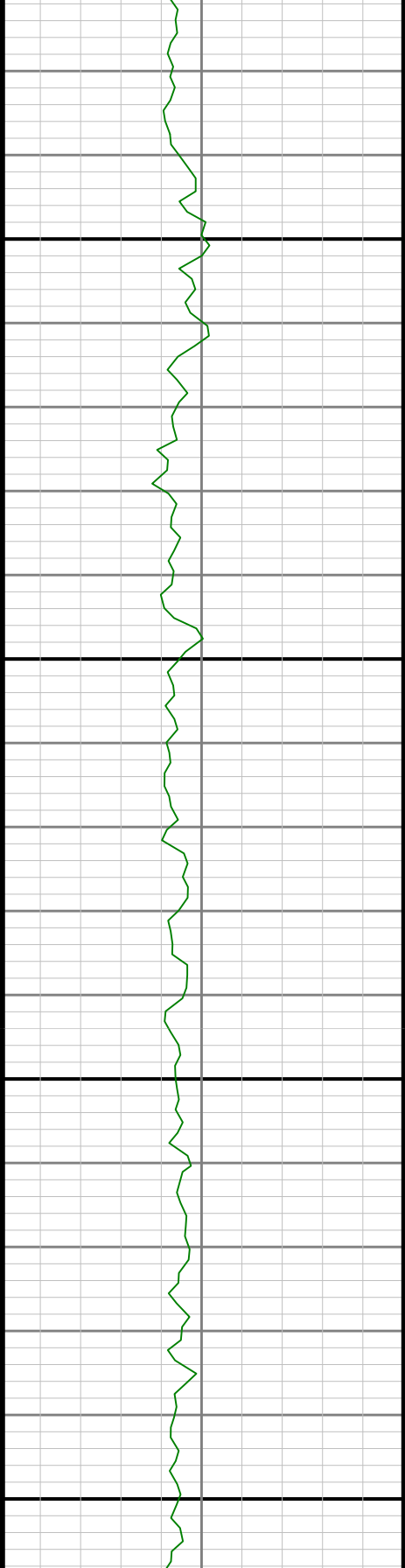
3600

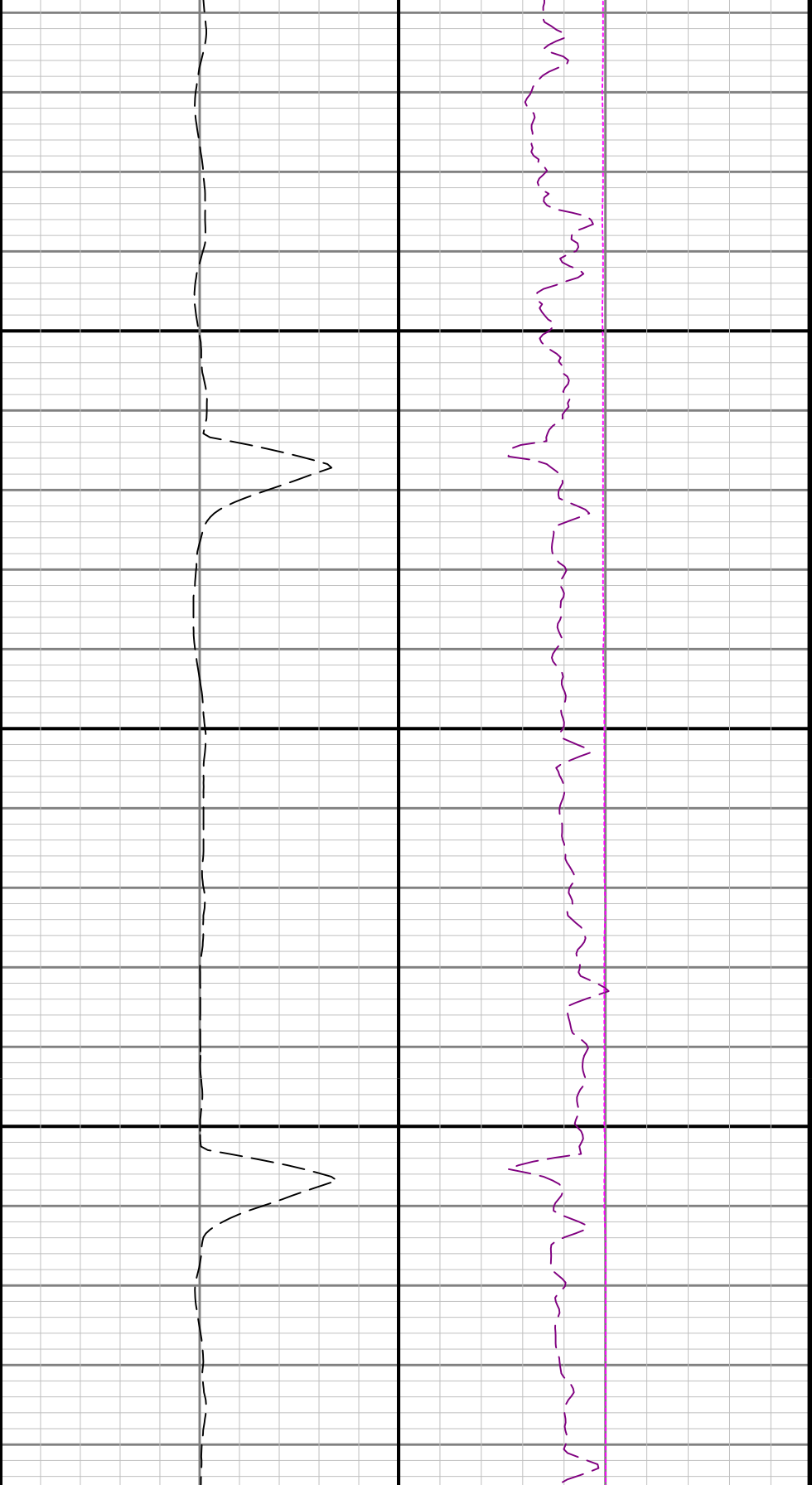




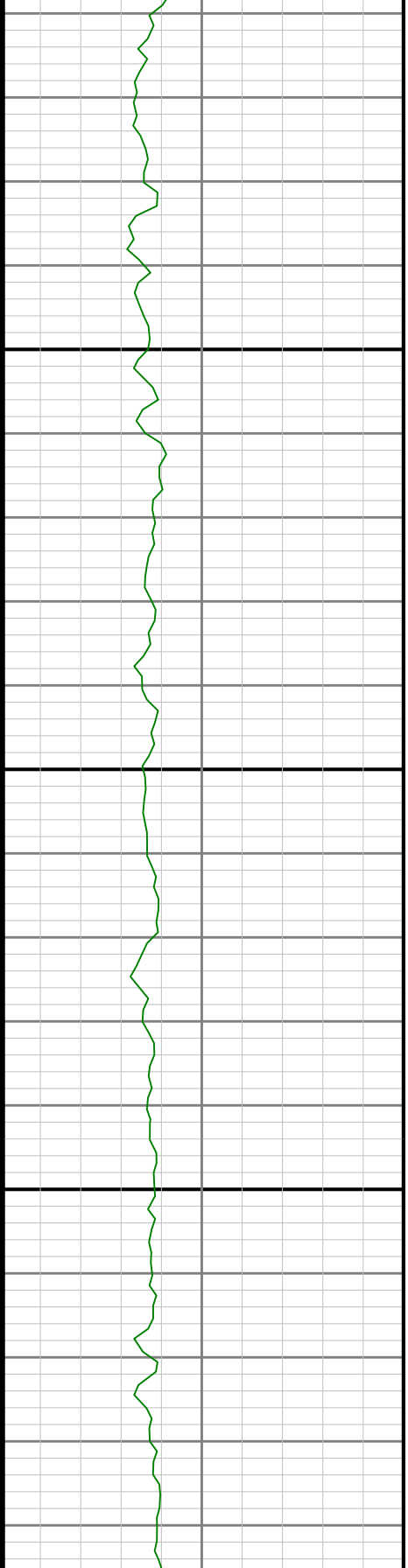
3700

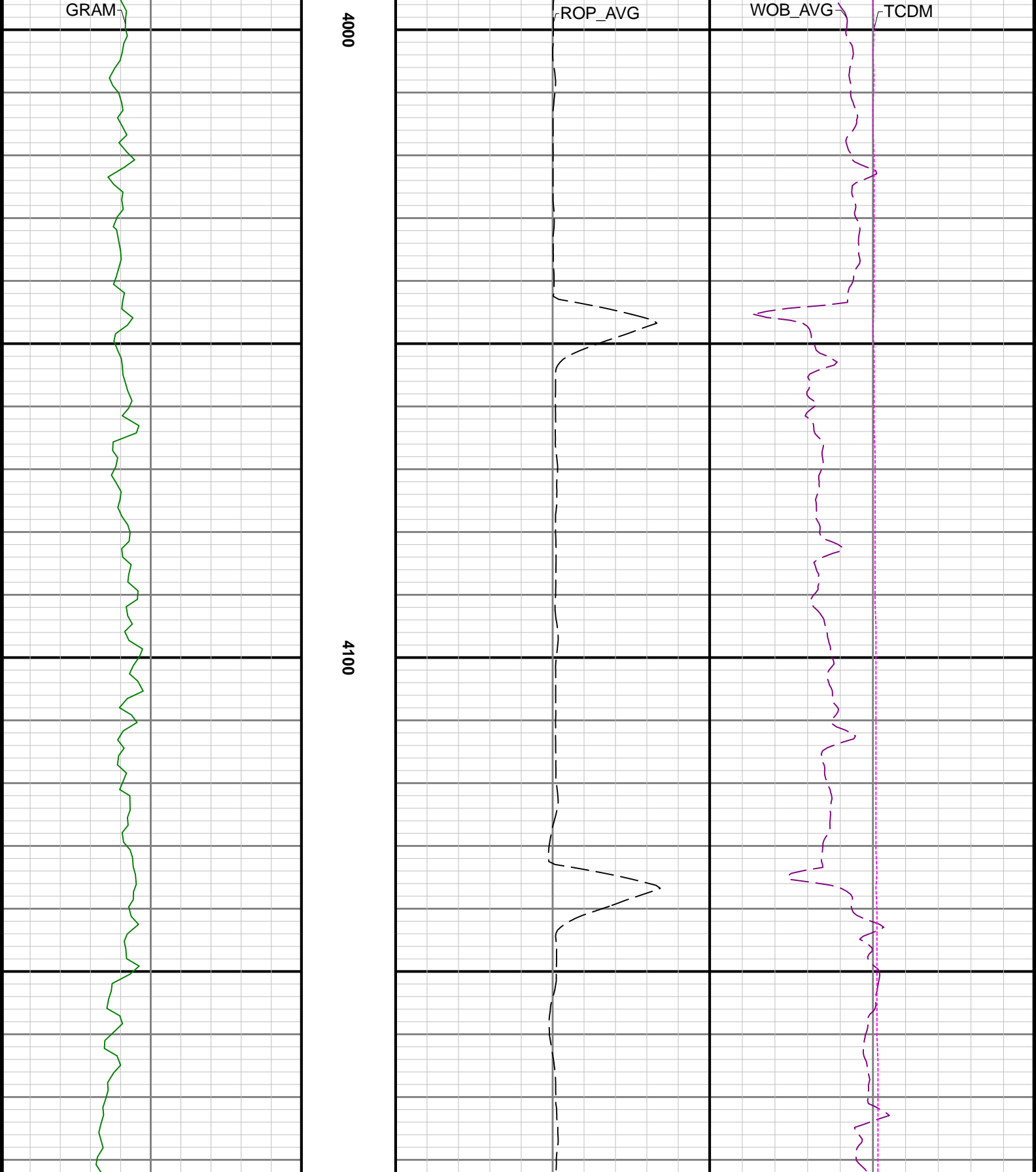
3800

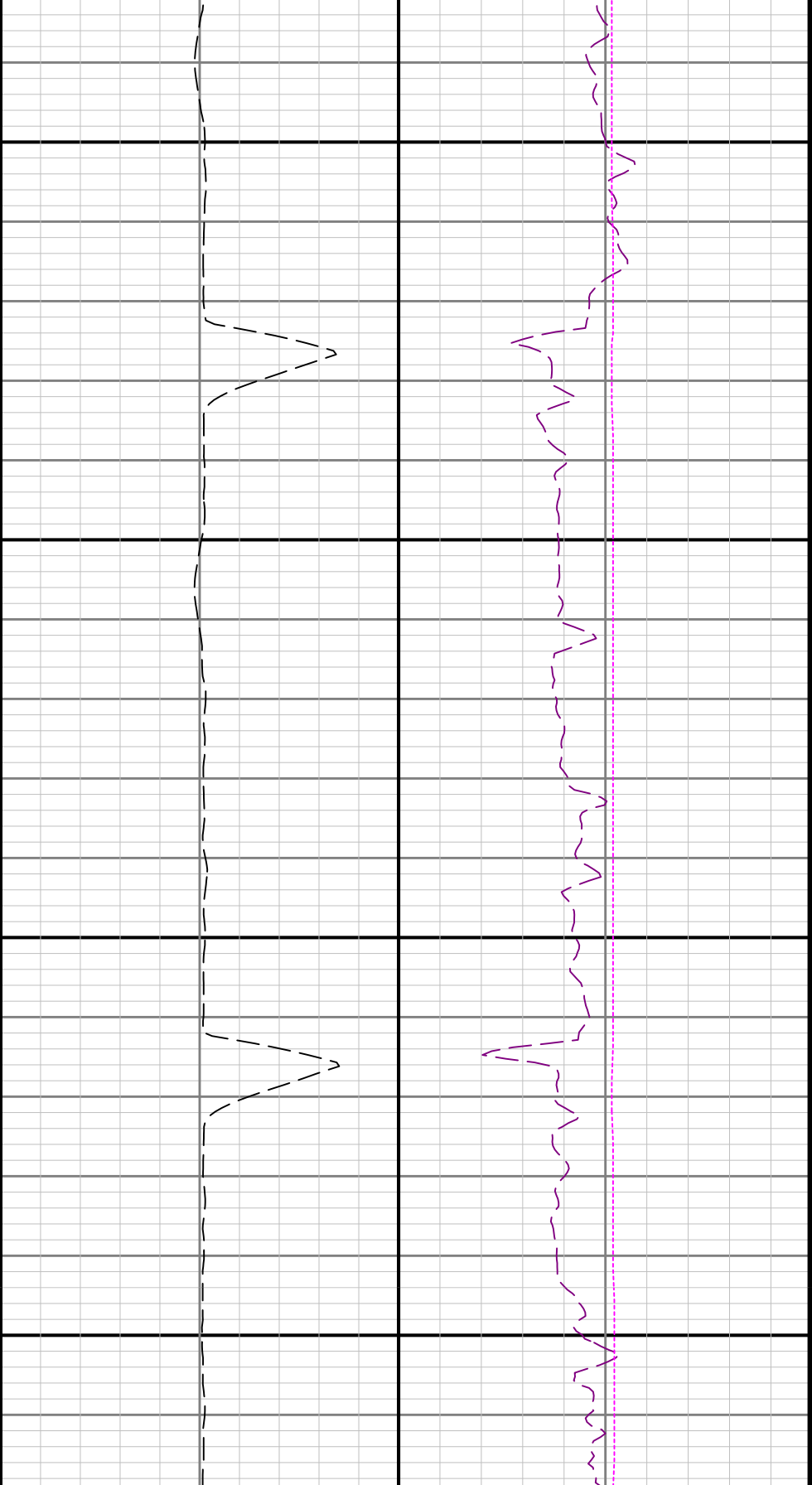




3900

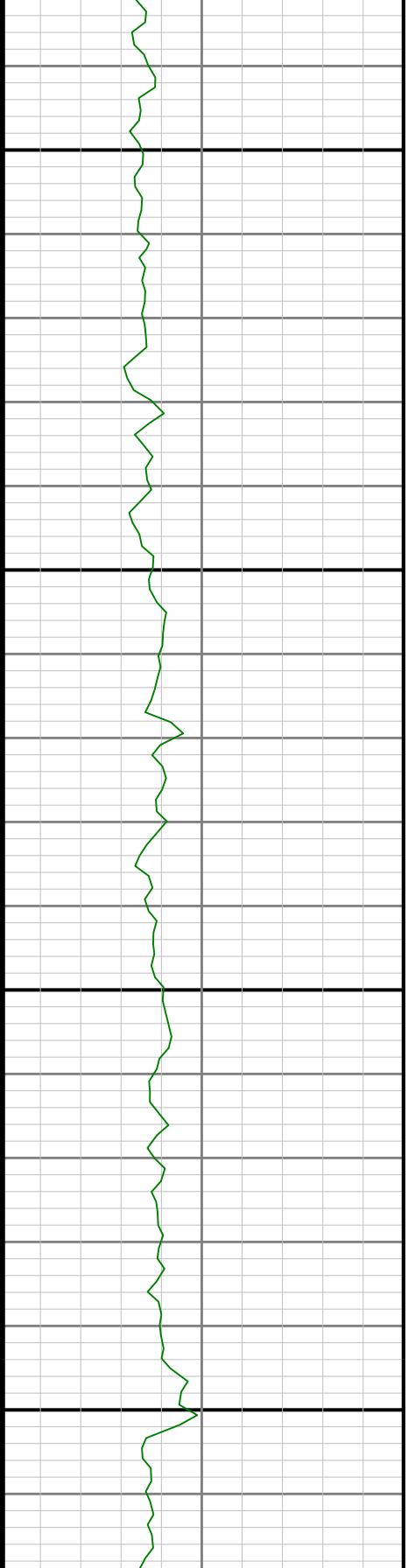


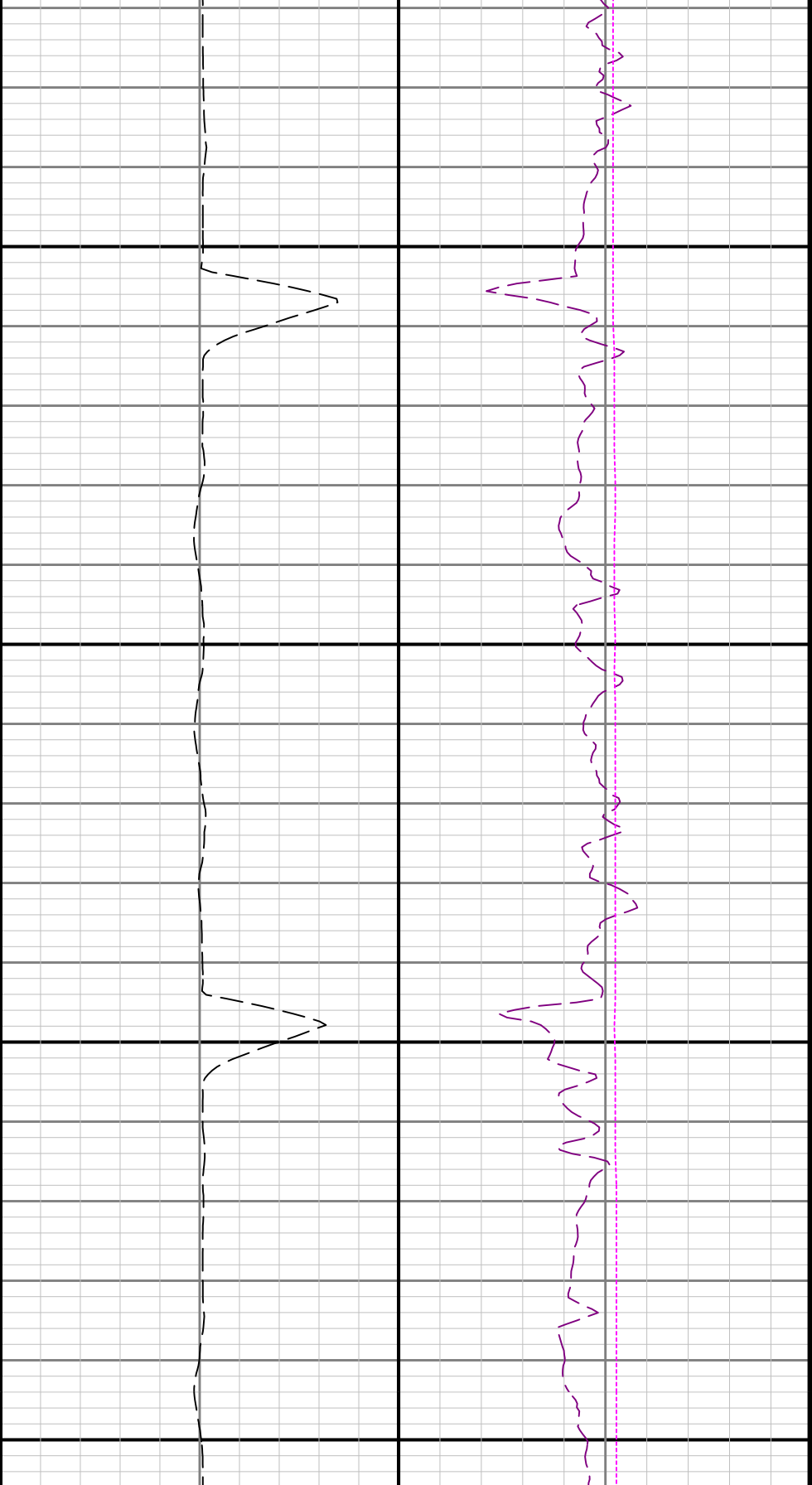




4200

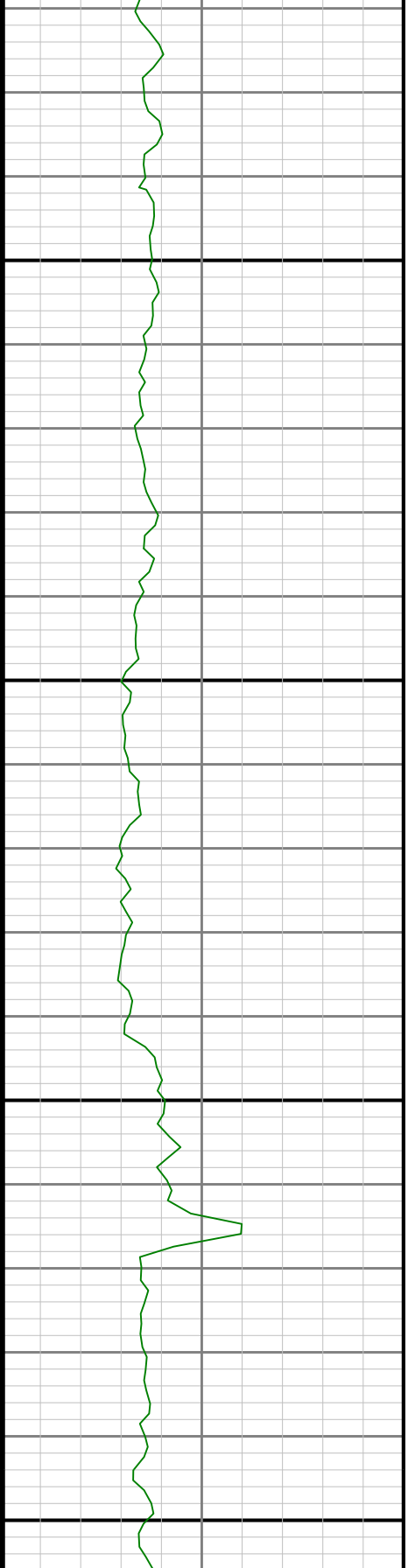
4300

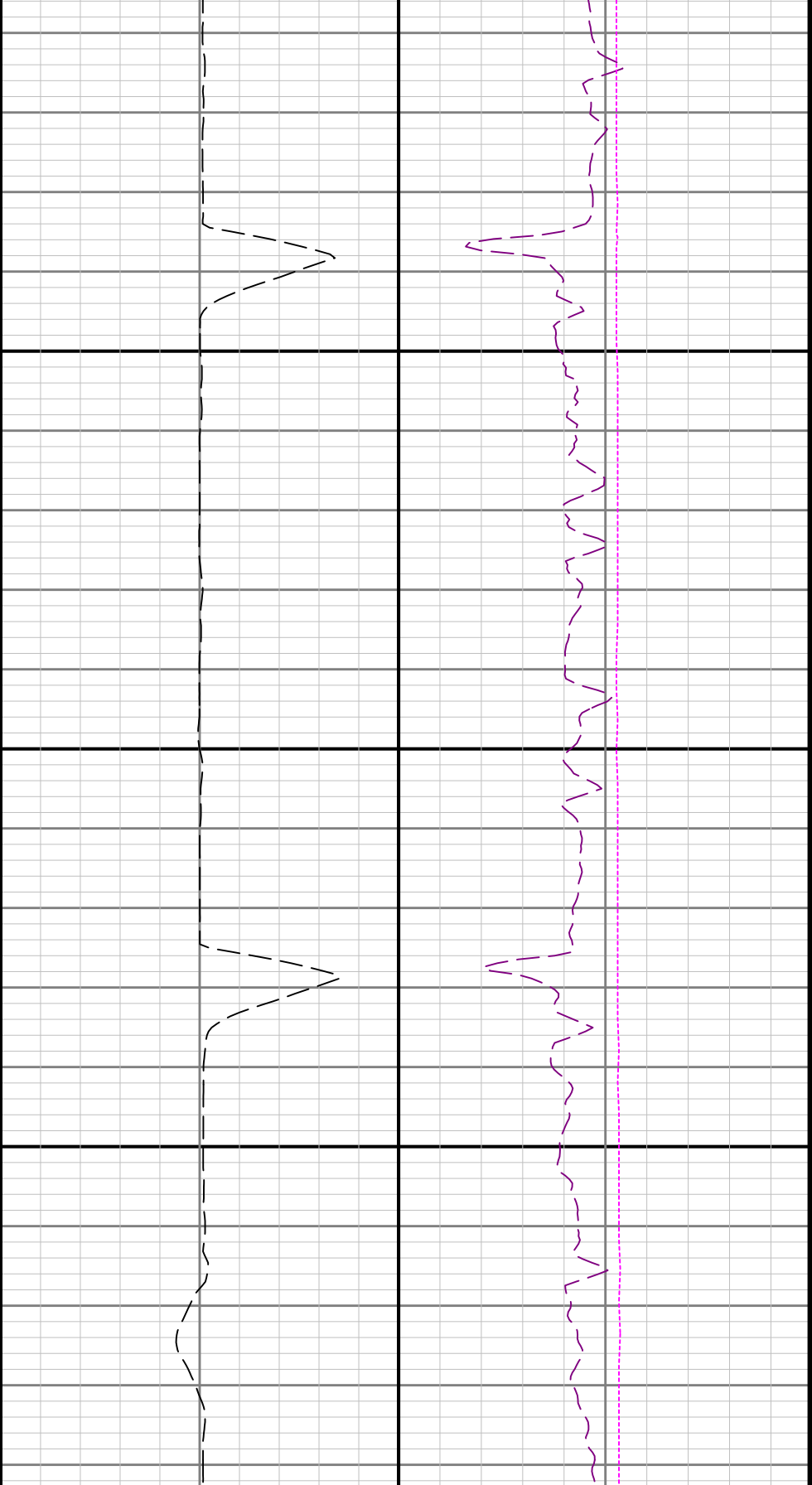




4400

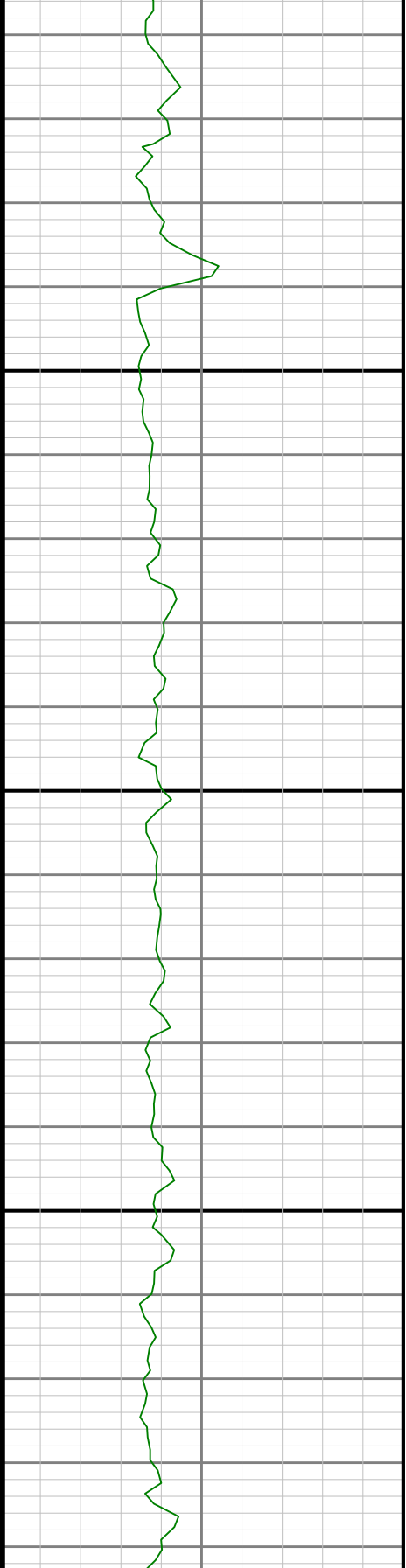
4500

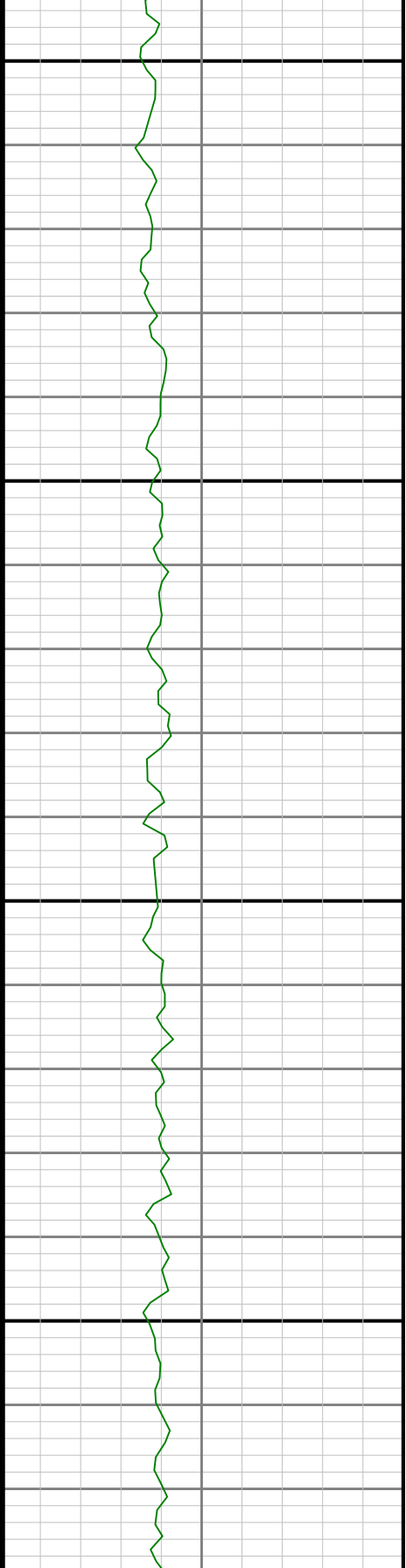


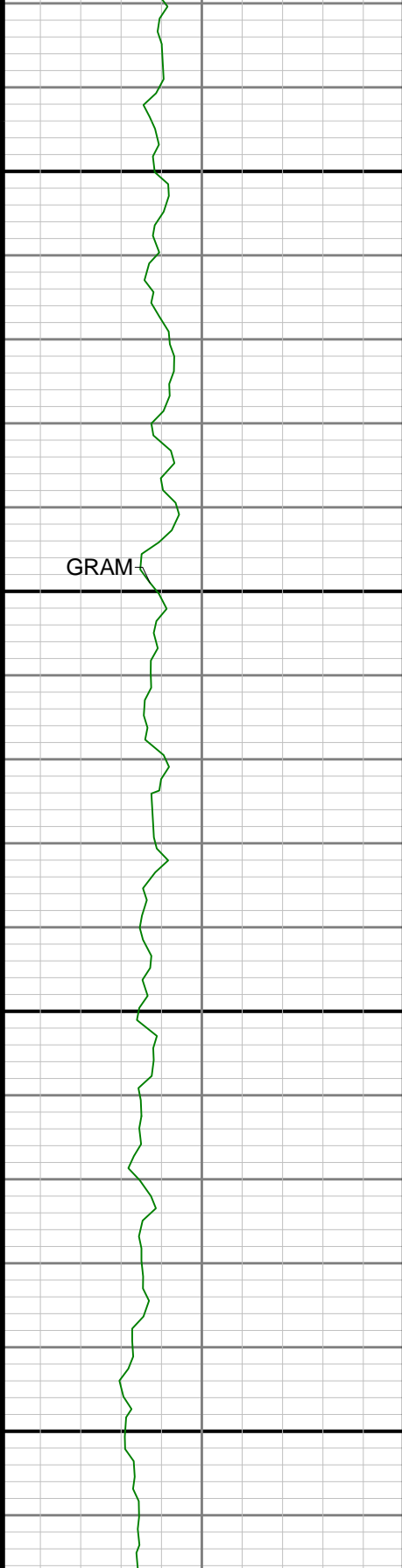


4600

4700

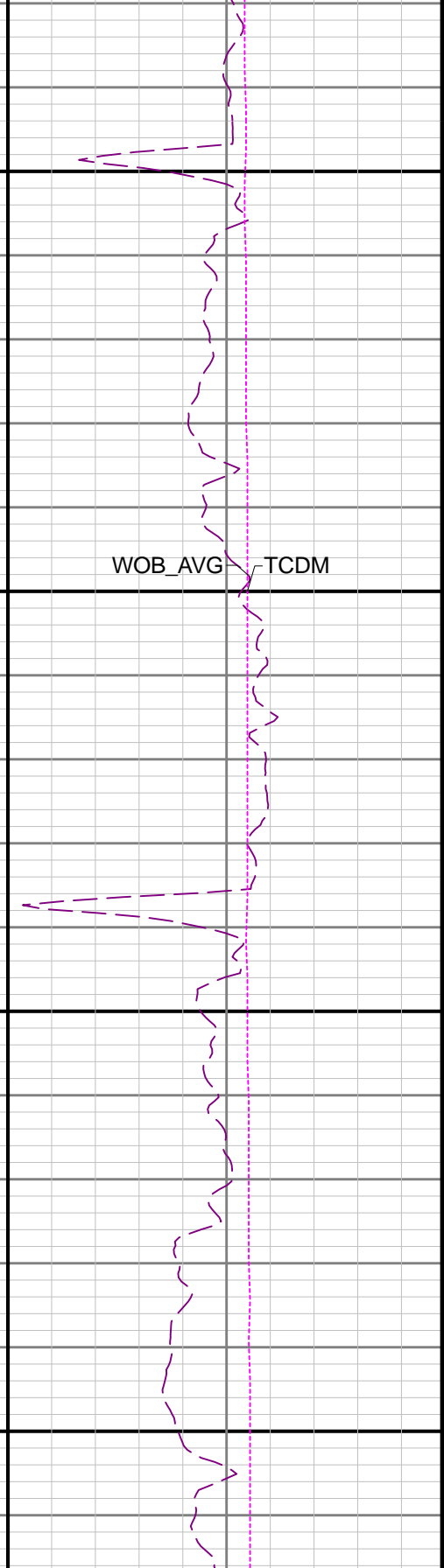
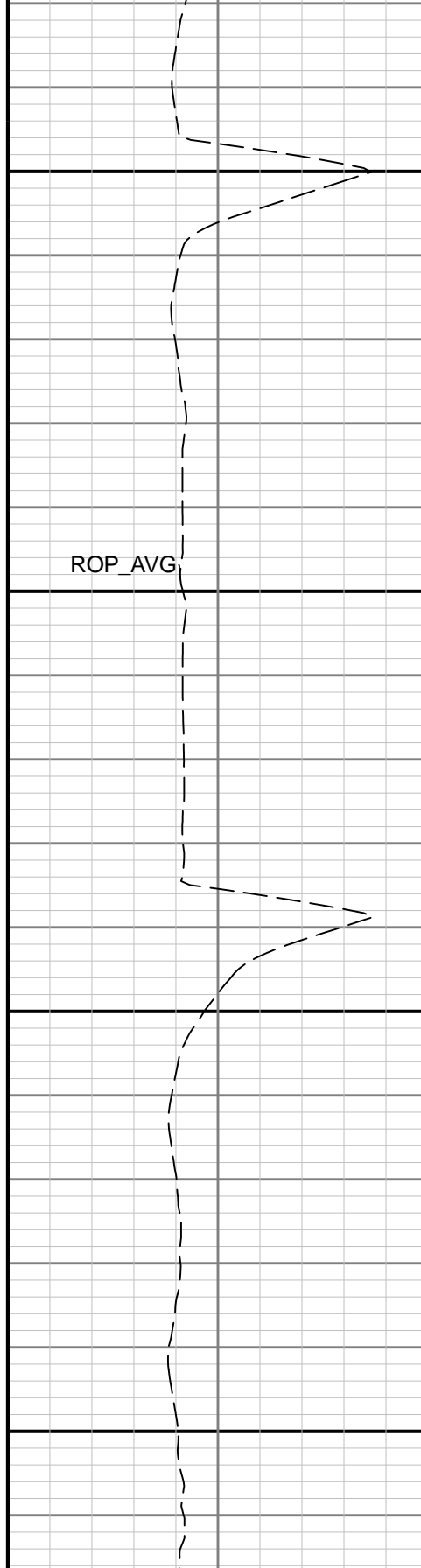


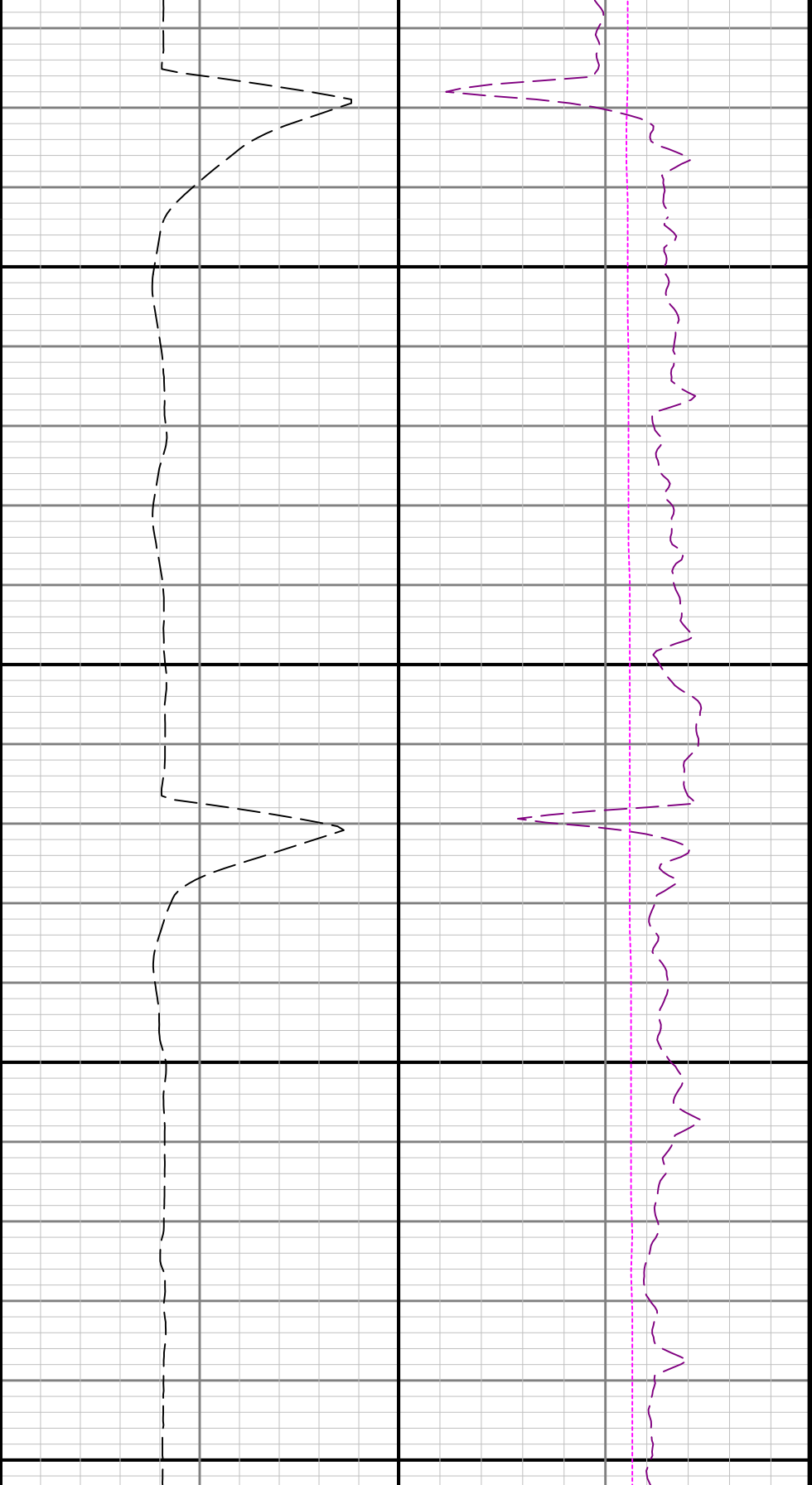




5000

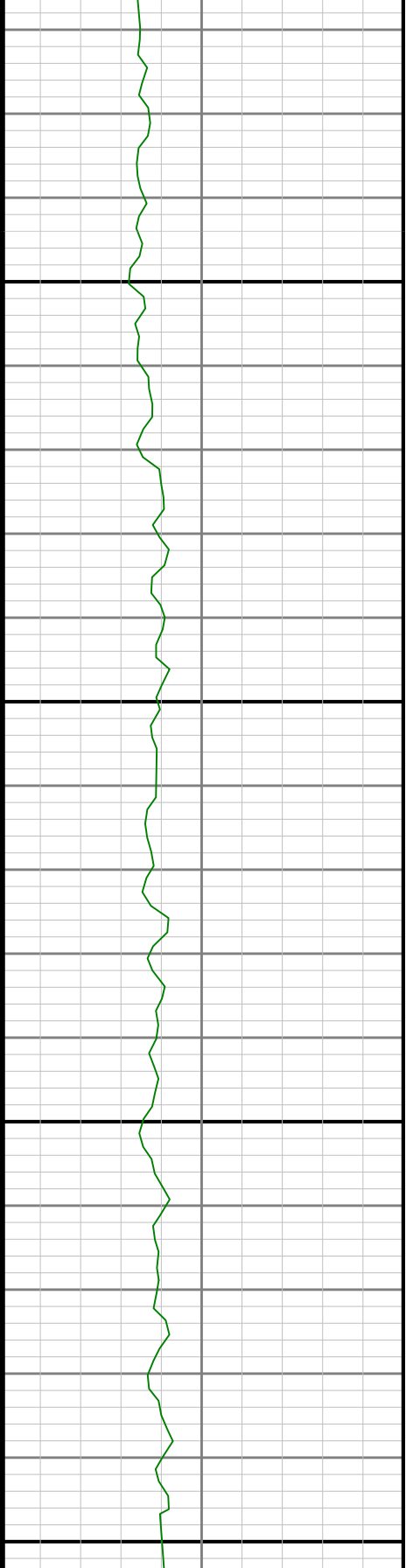
5100

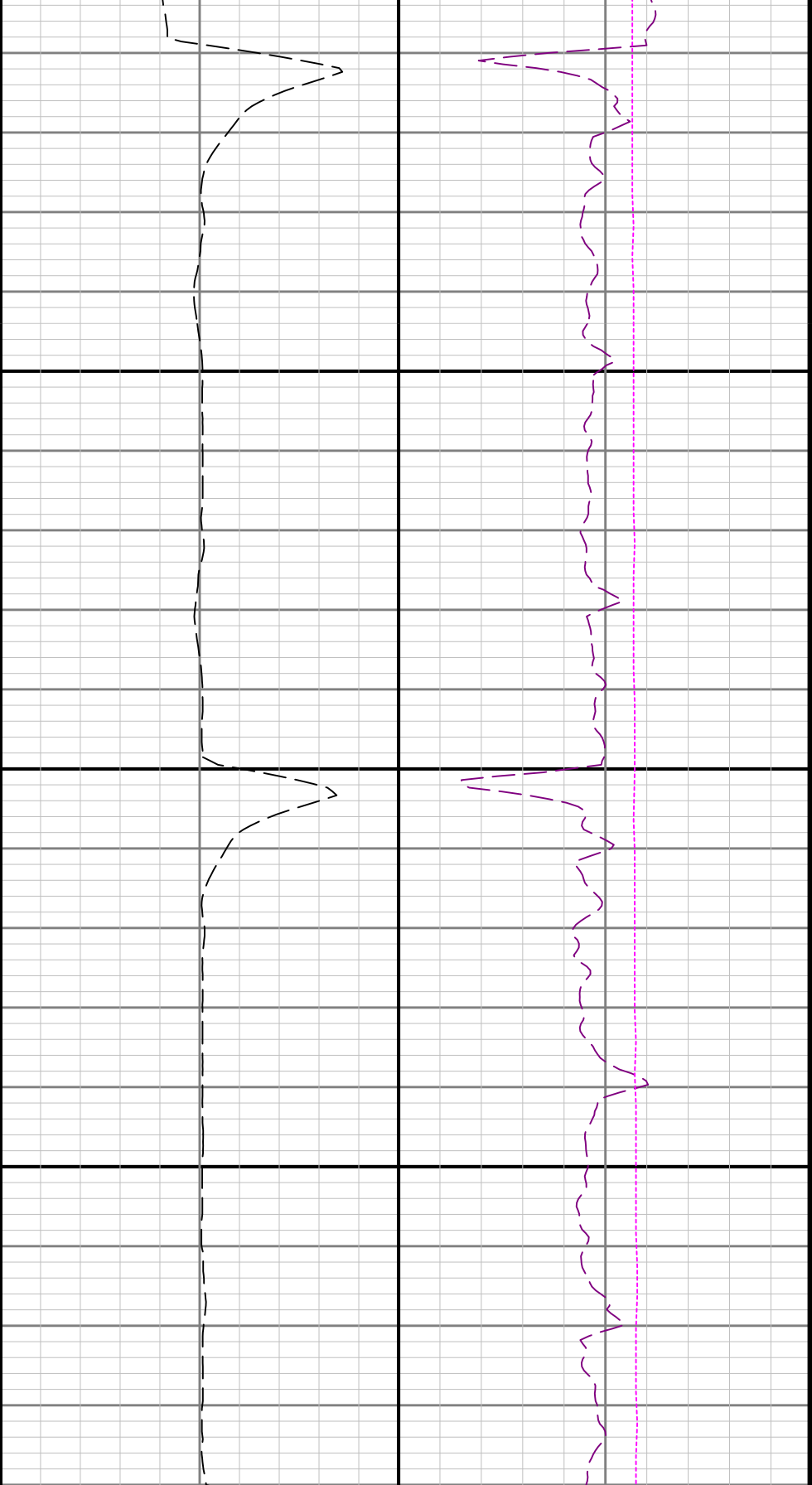




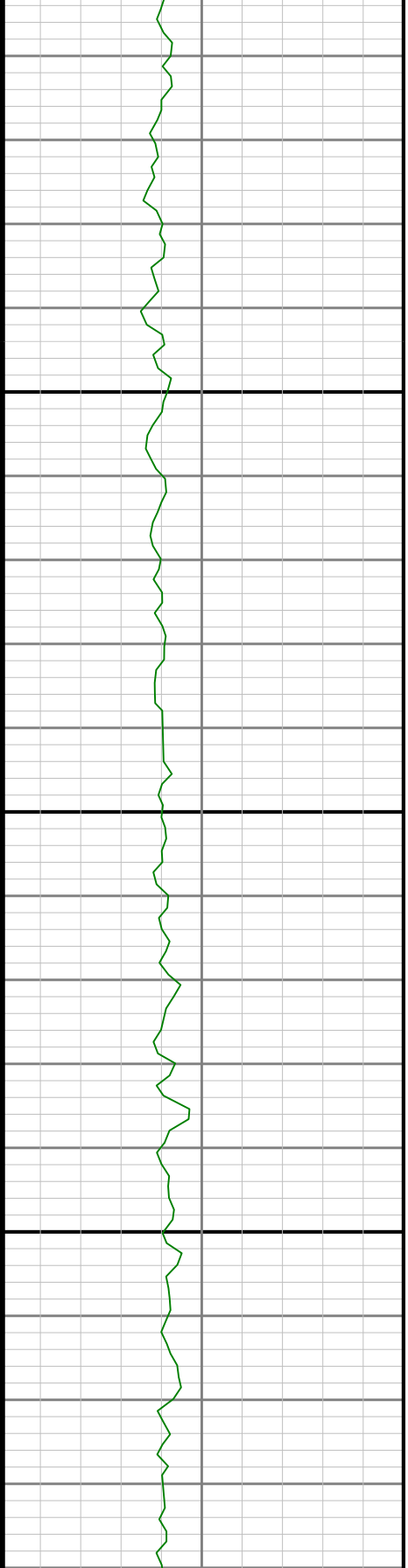
5200

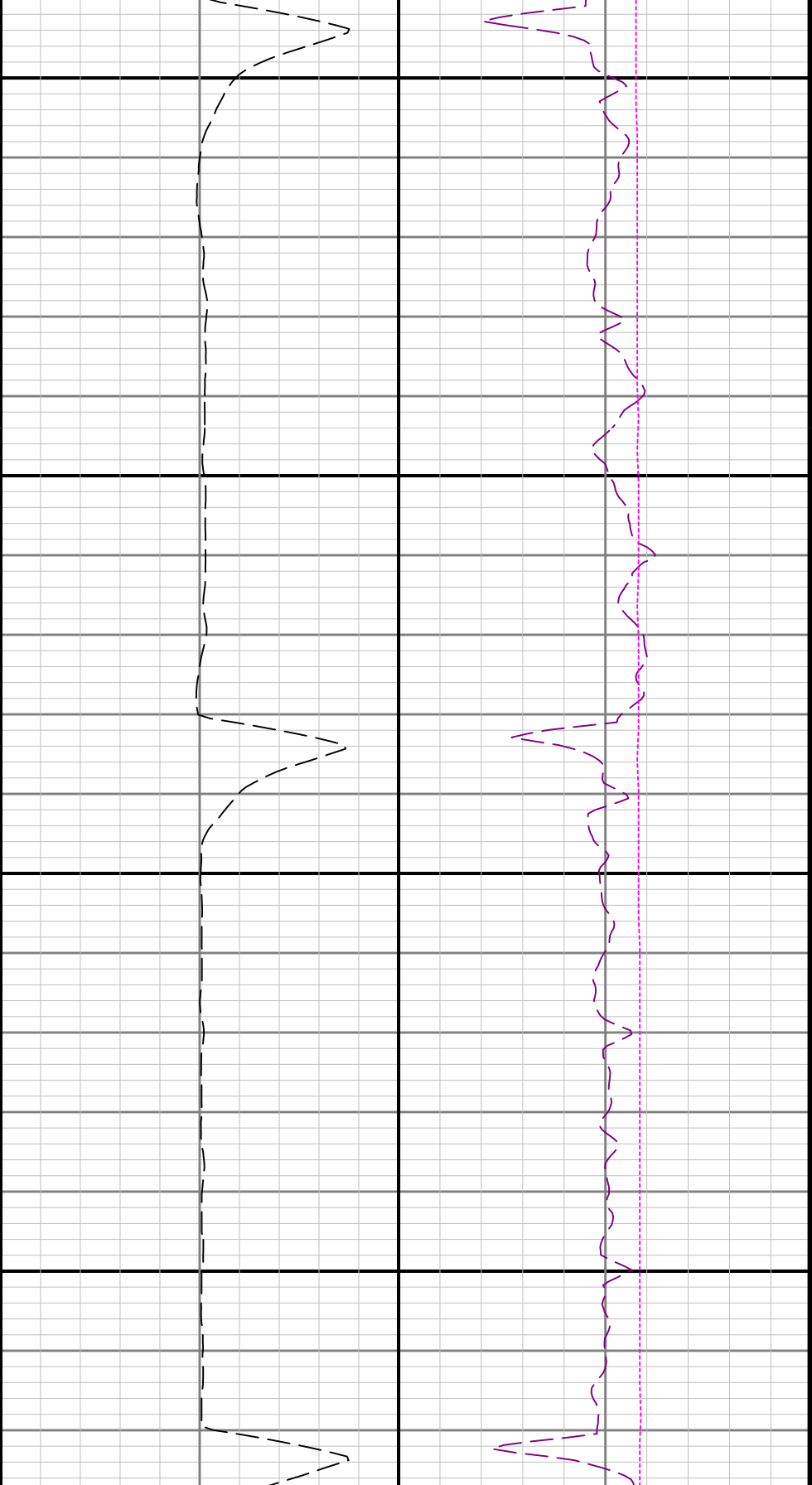
5300





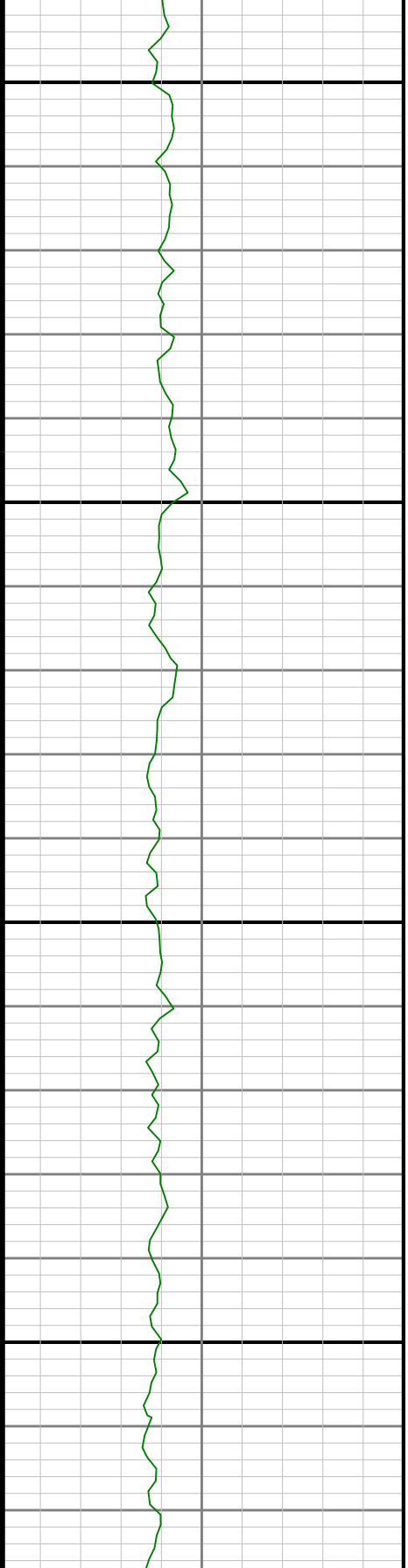
5400

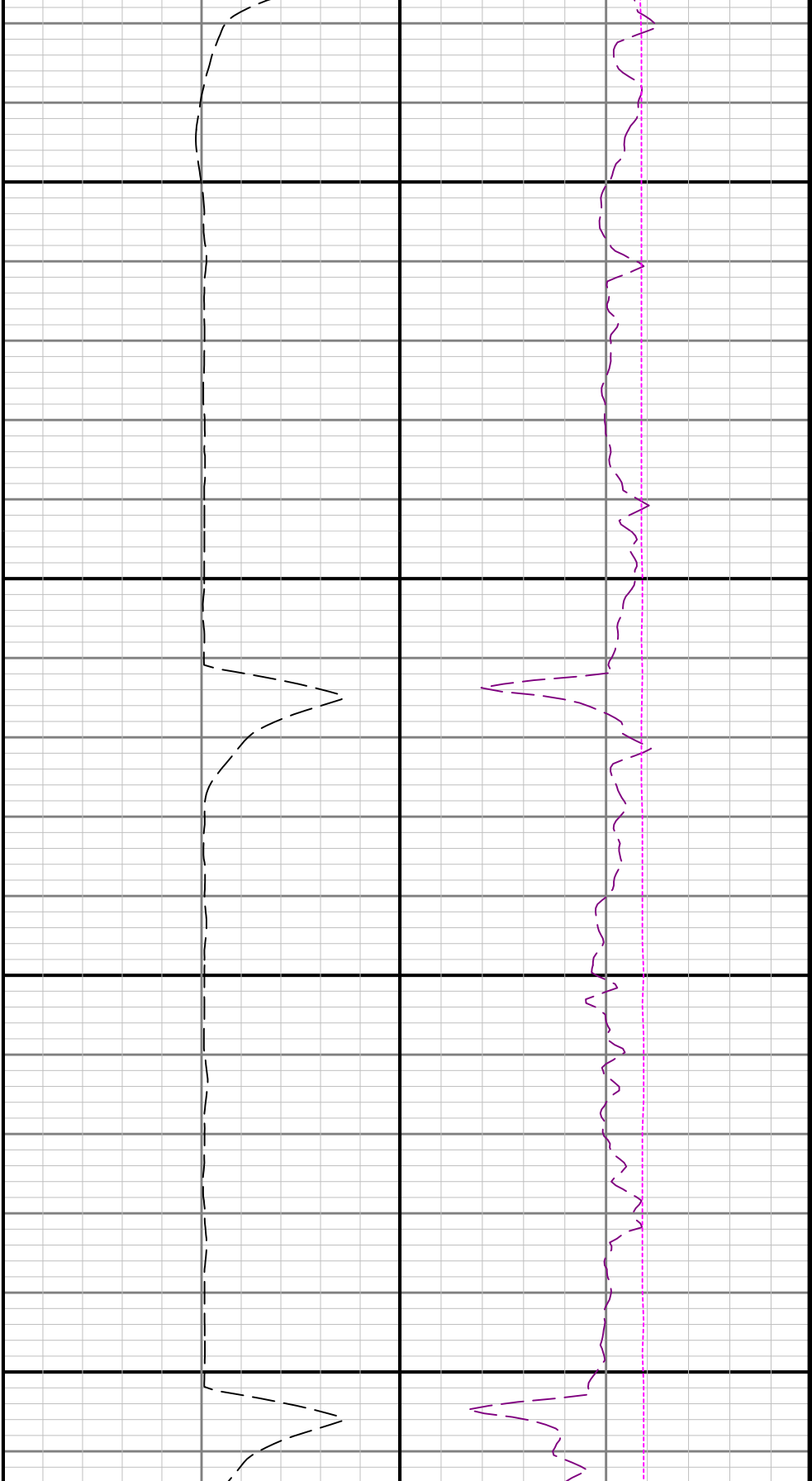




5500

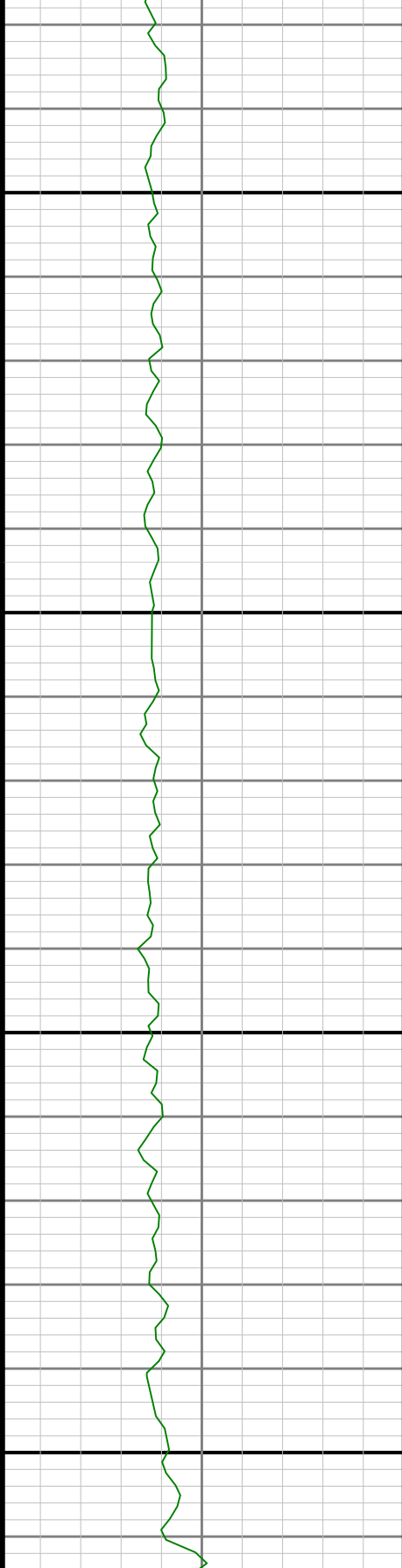
5600

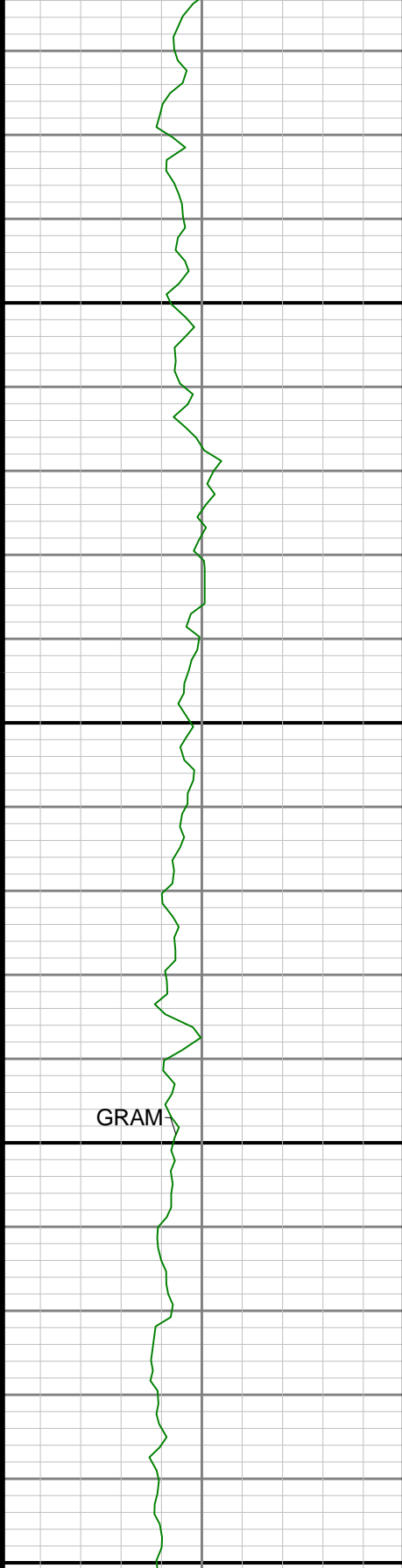




5700

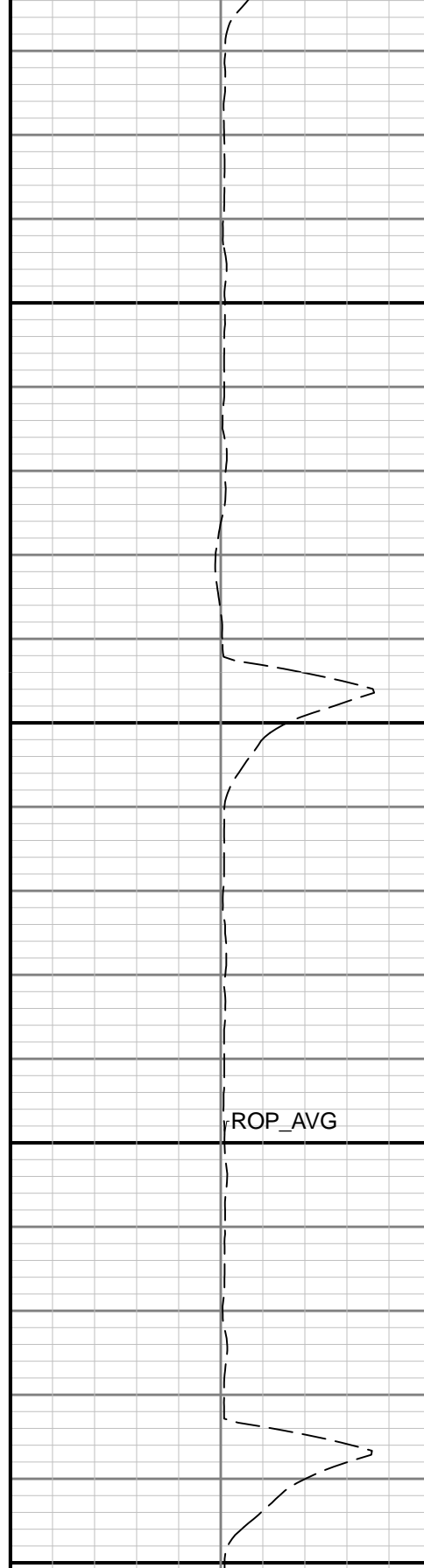
5800





5900

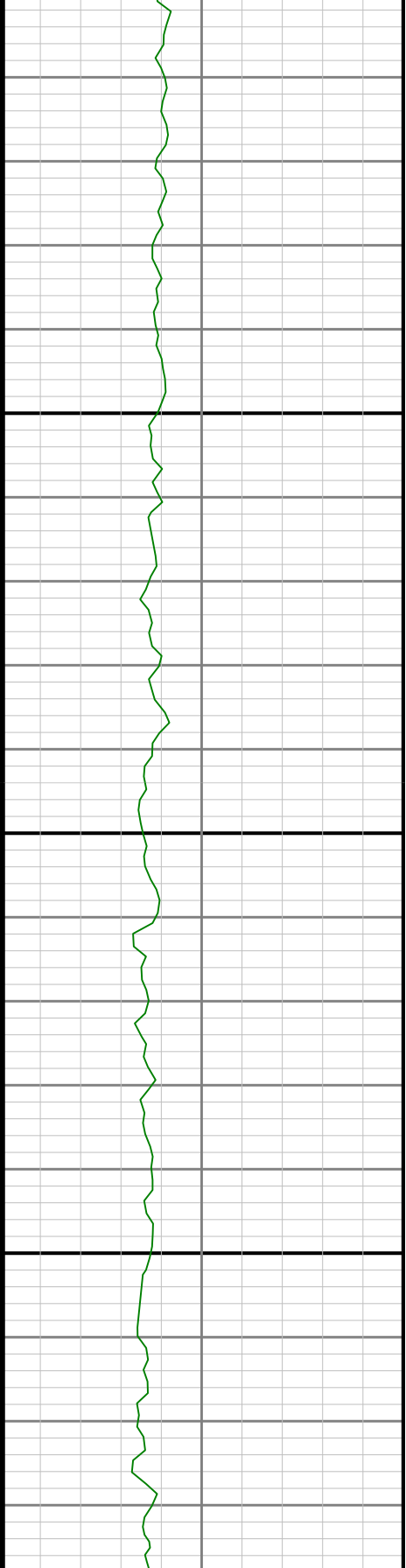
6000

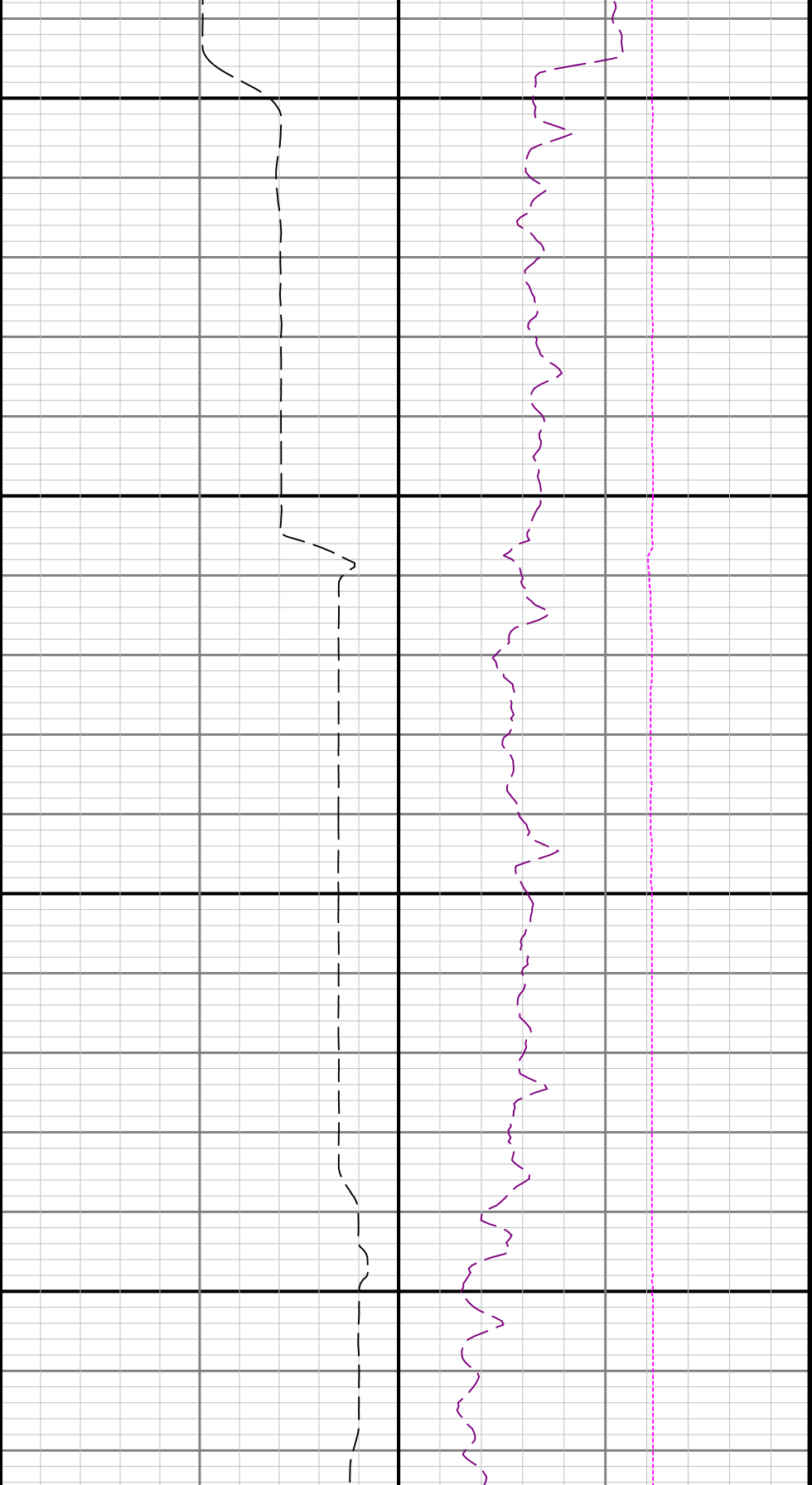




6100

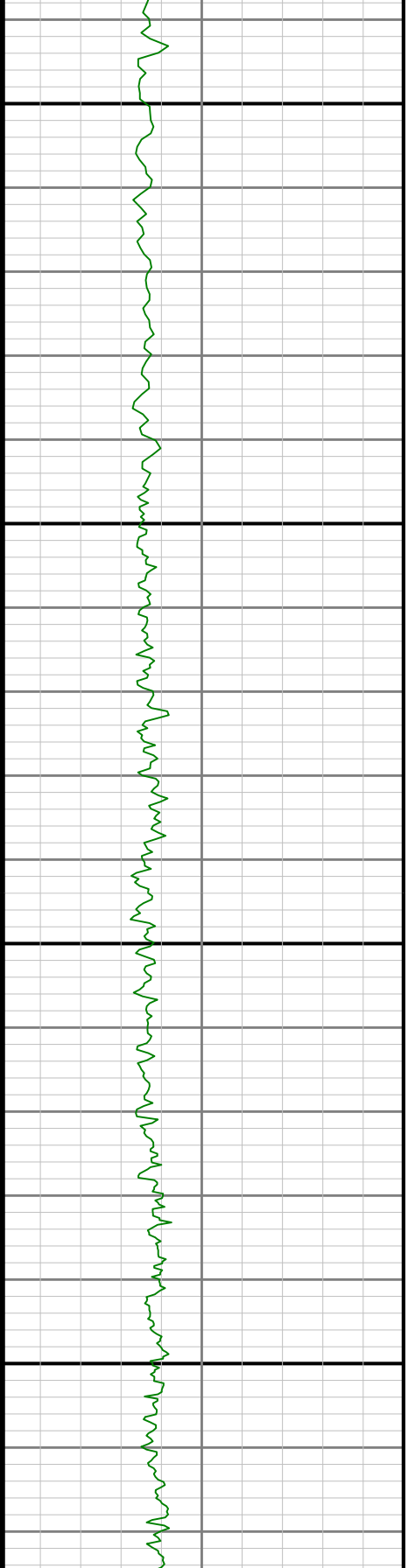
6200

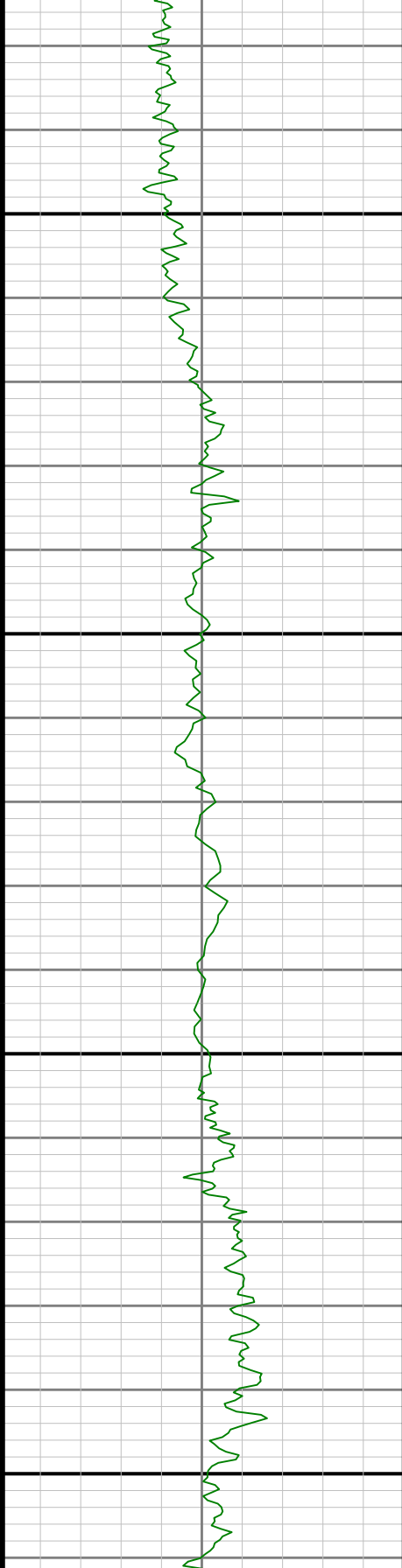




6300

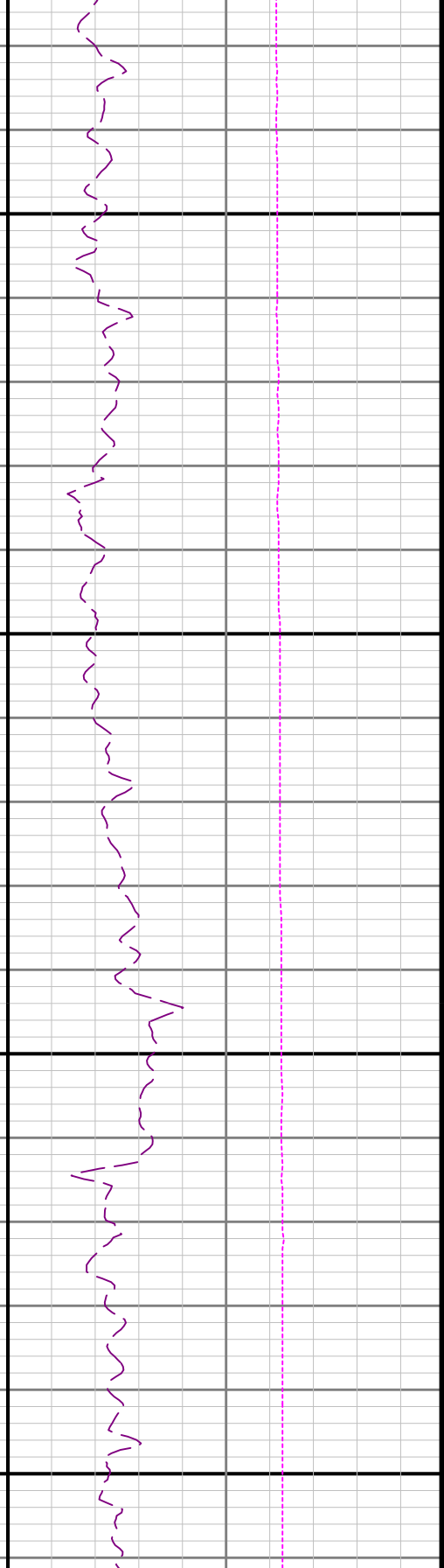
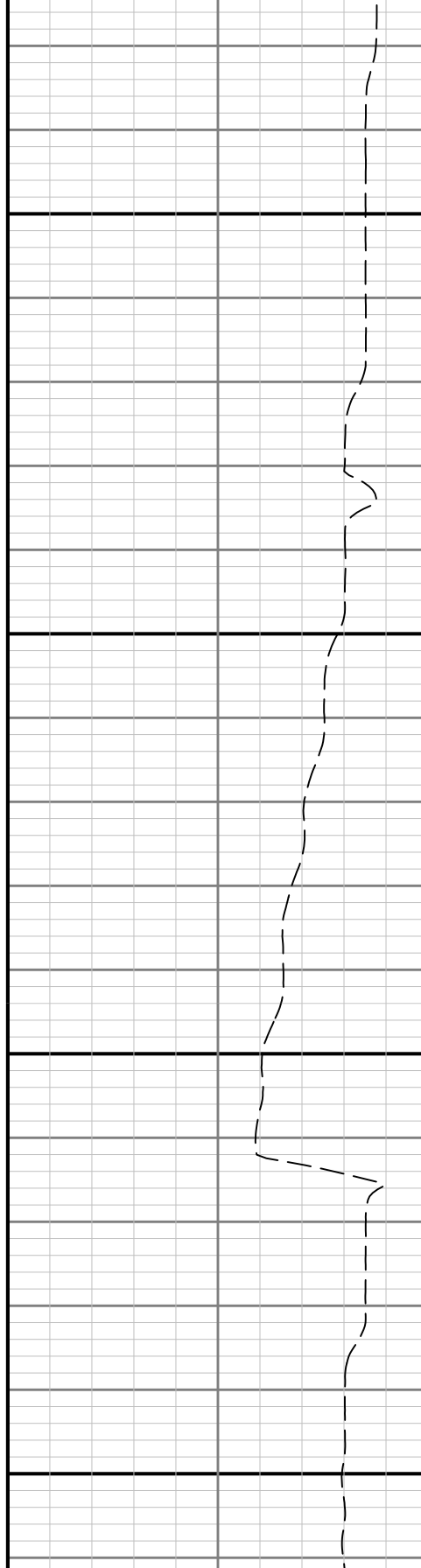
6400

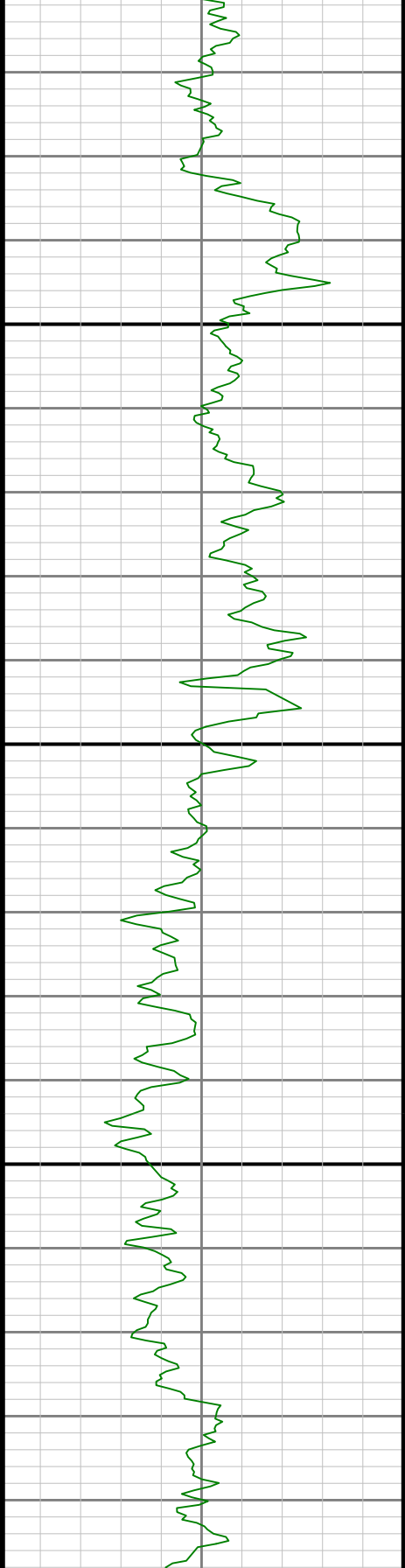




0099

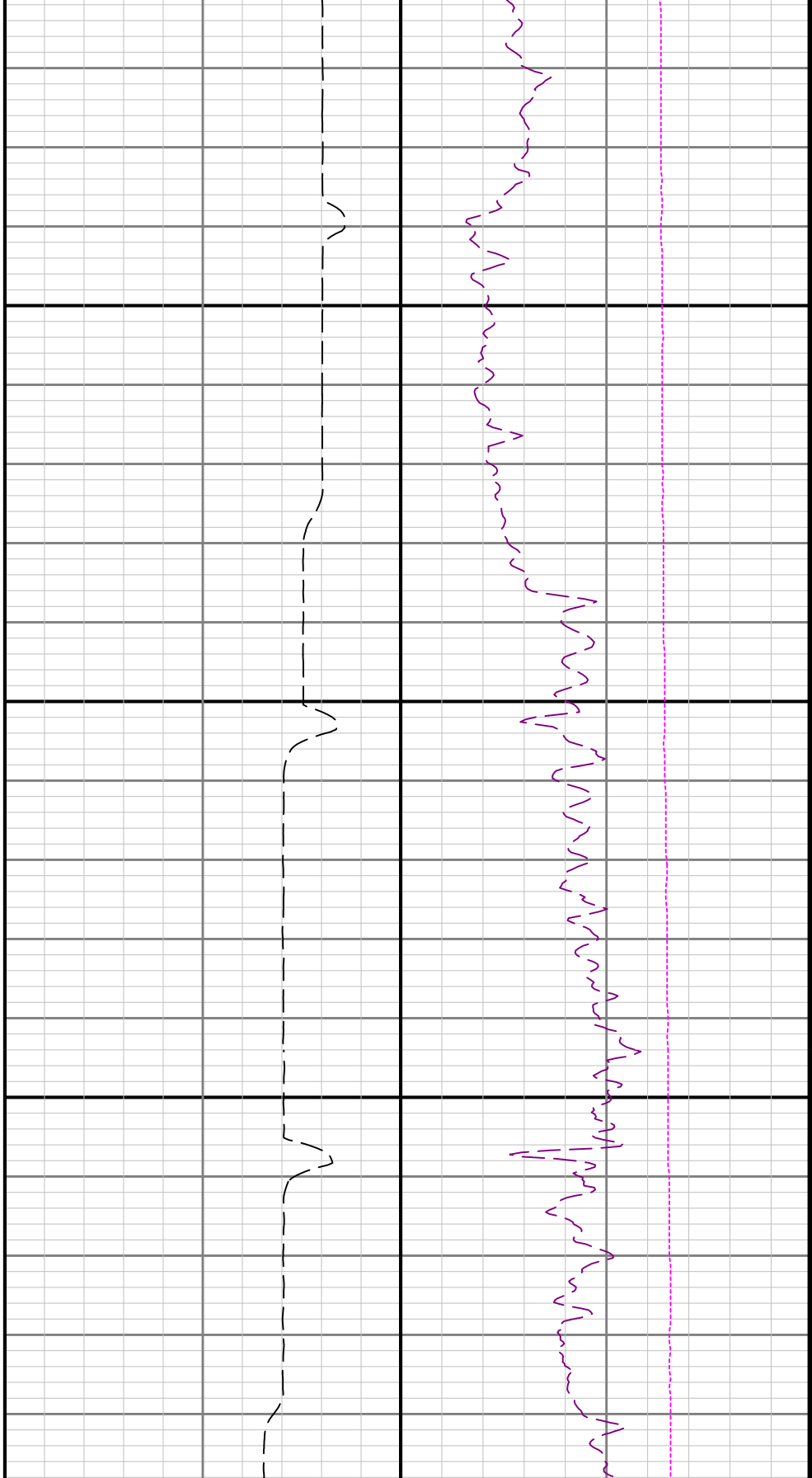
6500





6700

9



	934.00	0.16	80.01	N/A	-0.46	4.24	933.98	-3925.02	-0.04	94.00	0.13	-0.09	-28.72
	1029.00	0.19	307.40	N/A	-0.34	4.24	1028.98	-3830.02	-0.16	95.00	0.34	0.03	-139.59
	1124.00	0.48	340.88	N/A	0.13	3.99	1123.98	-3735.02	-0.60	95.00	0.36	0.31	35.24
	1218.00	0.52	344.24	N/A	0.91	3.74	1217.98	-3641.02	-1.35	94.00	0.05	0.04	3.57
	1313.00	0.28	322.75	N/A	1.51	3.48	1312.98	-3546.02	-1.91	95.00	0.29	-0.25	-22.62
	1408.00	0.11	81.33	N/A	1.71	3.43	1407.98	-3451.02	-2.10	95.00	0.36	-0.18	124.82
	1502.00	0.28	349.76	N/A	1.95	3.48	1501.98	-3357.02	-2.35	94.00	0.32	0.18	-97.41
	1597.00	0.38	237.12	N/A	2.01	3.18	1596.97	-3262.03	-2.37	95.00	0.58	0.11	-118.57
	1692.00	0.19	162.75	N/A	1.68	2.96	1691.97	-3167.03	-2.02	95.00	0.40	-0.20	-78.28
	1786.00	0.41	89.16	N/A	1.54	3.34	1785.97	-3073.03	-1.93	94.00	0.43	0.23	-78.29
	1881.00	0.19	304.77	N/A	1.63	3.55	1880.97	-2978.03	-2.05	95.00	0.61	-0.23	-151.99
Tie-In	1930.00	0.25	263.61	N/A	1.67	3.38	1929.97	-2929.03	-2.06	49.00	0.34	0.12	-84.00
	1999.00	0.28	207.44	106.8	1.50	3.15	1998.97	-2860.03	-1.87	69.00	0.36	0.04	-81.41
	2094.00	0.03	55.80	109.5	1.31	3.06	2093.97	-2765.03	-1.67	95.00	0.32	-0.26	-159.62
	2189.00	0.03	112.63	112.2	1.32	3.11	2188.97	-2670.03	-1.68	95.00	0.03	0.00	59.82
	2283.00	2.41	258.43	120.3	0.91	1.19	2282.94	-2576.06	-1.04	94.00	2.59	2.53	155.11
	2378.00	6.53	261.73	125.7	-0.27	-6.11	2377.63	-2481.37	0.99	95.00	4.34	4.34	3.47
	2473.00	9.48	267.74	128.4	-1.35	-19.28	2471.70	-2387.30	3.64	95.00	3.22	3.11	6.33
	2567.00	12.95	264.40	131.1	-2.69	-37.50	2563.89	-2295.11	7.13	94.00	3.75	3.69	-3.55
	2662.00	14.20	269.41	131.1	-3.85	-59.75	2666.24	-2202.76	10.92	95.00	1.81	1.32	5.27
	2757.00	16.23	272.84	131.1	-3.31	-84.66	2747.91	-2111.09	13.35	95.00	2.34	2.14	3.61
	2851.00	18.27	252.57	133.8	-7.08	-111.87	2837.75	-2021.25	20.33	94.00	6.71	2.17	-21.56
	2946.00	14.01	237.06	133.8	-17.80	-135.75	2929.03	-1929.97	33.82	95.00	6.34	-4.48	-16.33
	3041.00	14.74	242.19	136.5	-29.69	-156.09	3021.06	-1837.94	48.04	95.00	1.54	0.77	5.40
	3135.00	14.82	242.52	136.5	-40.82	-177.33	3111.95	-1747.05	61.62	94.00	0.12	0.09	0.35
	3230.00	14.72	243.05	139.2	-51.89	-198.87	3203.81	-1655.19	75.18	95.00	0.18	-0.11	0.56
	3325.00	14.58	243.05	141.9	-62.78	-220.29	3295.72	-1563.28	88.53	95.00	0.15	-0.15	0.00
	3420.00	14.50	243.14	141.9	-73.58	-241.56	3387.68	-1471.32	101.78	95.00	0.09	-0.08	0.09
	3514.00	14.71	244.43	144.6	-84.04	-262.82	3478.64	-1380.36	114.70	94.00	0.41	0.22	1.37
	3609.00	14.74	243.47	144.6	-94.65	-284.51	3570.52	-1288.48	127.81	95.00	0.26	0.03	-1.01
	3703.00	15.15	243.03	144.6	-105.56	-306.16	3661.34	-1197.66	141.22	94.00	0.45	0.44	-0.47
	3798.00	15.44	243.05	147.3	-116.92	-328.50	3752.98	-1106.02	155.16	95.00	0.31	0.31	0.02
	3893.00	16.77	242.07	147.3	-129.07	-351.88	3844.25	-1014.75	170.00	95.00	1.43	1.40	-1.03
	3987.00	17.97	241.99	150.0	-142.23	-376.66	3933.96	-925.04	186.02	94.00	1.28	1.28	-0.09
	4082.00	17.79	242.93	150.0	-155.72	-402.52	4024.37	-834.63	202.49	95.00	0.36	-0.19	0.99
	4177.00	17.69	243.19	152.7	-168.84	-428.33	4114.85	-744.15	218.58	95.00	0.13	-0.11	0.27
	4271.00	17.94	242.72	155.4	-181.91	-453.94	4204.35	-654.65	234.61	94.00	0.31	0.27	-0.50
	4366.00	17.80	243.17	155.4	-195.17	-479.90	4294.76	-564.24	250.86	95.00	0.21	-0.15	0.47
	4461.00	18.04	242.27	155.4	-208.57	-505.88	4385.15	-473.85	267.25	95.00	0.39	0.25	-0.95
	4555.00	17.96	246.39	155.4	-221.15	-532.05	4474.56	-384.44	282.85	94.00	1.36	-0.09	4.38
	4650.00	17.83	246.63	158.1	-232.78	-558.82	4564.96	-294.04	297.59	95.00	0.16	-0.14	0.25
	4745.00	17.49	249.62	158.1	-243.52	-585.55	4655.49	-203.51	311.43	95.00	1.02	-0.36	3.15
	4839.00	17.64	249.32	160.8	-253.47	-612.12	4745.10	-113.90	324.47	94.00	0.19	0.16	-0.32
	4934.00	17.91	248.67	160.8	-263.87	-639.19	4835.57	-23.43	338.01	95.00	0.35	0.28	-0.68
	5029.00	17.03	251.36	163.5	-273.63	-665.98	4926.19	67.19	350.89	95.00	1.26	-0.93	2.83
	5123.00	17.68	254.46	163.5	-281.85	-692.78	5015.91	156.91	362.24	94.00	1.20	0.69	3.30
	5218.00	17.31	249.00	166.2	-290.78	-719.87	5106.52	247.52	374.33	95.00	1.77	-0.39	-5.75
	5312.00	16.77	249.44	166.2	-300.56	-745.62	5196.39	337.39	387.10	94.00	0.59	-0.57	0.47
	5407.00	16.36	252.03	168.9	-309.50	-771.18	5287.45	428.45	399.01	95.00	0.89	-0.43	2.73
	5502.00	17.07	258.23	171.6	-316.47	-797.56	5378.45	519.45	409.08	95.00	2.02	0.75	6.53
	5596.00	16.57	248.81	171.6	-324.13	-823.57	5468.44	609.44	419.77	94.00	2.94	-0.53	-10.02
	5691.00	16.75	248.77	174.3	-333.99	-848.96	5559.45	700.45	432.58	95.00	0.19	0.19	-0.04
	5786.00	17.04	249.21	174.3	-343.88	-874.74	5650.35	791.35	445.47	95.00	0.33	0.31	0.46
	5881.00	16.77	253.97	177.0	-352.61	-900.92	5741.25	882.25	457.25	95.00	1.48	-0.28	5.01
	5975.00	16.69	249.49	177.0	-361.08	-926.60	5831.28	972.28	468.72	94.00	1.37	-0.09	-4.77
	6070.00	17.43	248.47	179.7	-371.09	-952.61	5922.10	1063.10	481.74	95.00	0.84	0.78	-1.07
	6165.00	17.28	254.60	179.7	-380.05	-979.45	6012.78	1153.78	493.84	95.00	1.93	-0.16	6.45
	6259.00	17.11	254.04	179.7	-387.56	-1006.21	6102.58	1243.58	504.48	94.00	0.25	-0.18	-0.60
	6354.00	16.22	258.17	179.7	-394.13	-1032.63	6193.59	1334.59	514.13	95.00	1.56	-0.94	4.35
	6449.00	17.20	254.31	182.5	-400.65	-1059.14	6284.58	1425.58	523.76	95.00	1.56	1.03	-4.06
	6544.00	18.82	234.45	182.5	-413.37	-1085.16	6375.01	1516.01	539.48	95.00	6.65	1.71	-20.91
	6638.00	25.26	211.50	185.2	-439.36	-1108.04	6462.25	1603.25	568.01	94.00	11.32	6.85	-24.41

	6733.00	32.60	21.26	187.9	-478.57	-1131.94	6545.34	1686.34	609.79	95.00	7.73	7.73	-0.25
	6828.00	40.59	209.96	187.9	-527.30	-1160.70	6621.55	1762.55	661.59	95.00	8.45	8.41	-1.37
	6922.00	49.93	201.95	190.6	-587.34	-1189.51	6687.70	1828.70	724.63	94.00	11.62	9.94	-8.52
	7017.00	56.25	194.63	193.3	-659.40	-1213.11	6744.77	1885.77	798.99	95.00	9.06	6.65	-7.71
	7112.00	64.14	194.41	196.0	-739.14	-1233.76	6791.95	1932.95	880.62	95.00	8.31	8.31	-0.23
	7207.00	73.20	195.68	198.7	-824.50	-1256.73	6826.47	1967.47	968.11	95.00	9.62	9.54	1.34
	7301.00	80.91	191.96	198.7	-913.39	-1278.55	6847.52	1988.52	1058.96	94.00	9.06	8.20	-3.96
	7396.00	88.40	189.35	201.4	-1006.27	-1296.01	6856.37	1997.37	1153.26	95.00	8.34	7.88	-2.75
	7490.00	90.65	180.77	204.1	-1099.81	-1304.30	6857.15	1998.15	1247.12	94.00	9.44	2.39	-9.13
	7585.00	89.72	180.26	209.5	-1194.80	-1305.15	6856.84	1997.84	1341.54	95.00	1.12	-0.98	-0.54
	7680.00	89.32	180.73	209.5	-1289.80	-1305.97	6857.64	1998.64	1435.95	95.00	0.65	-0.42	0.49
	7774.00	89.75	184.91	212.2	-1383.66	-1310.59	6858.40	1999.40	1529.70	94.00	4.47	0.46	4.45
	7869.00	89.88	185.62	212.2	-1478.26	-1319.31	6858.71	1999.71	1624.66	95.00	0.76	0.14	0.75
	7964.00	90.09	185.25	214.9	-1572.83	-1328.31	6858.73	1999.73	1719.63	95.00	0.45	0.22	-0.39
	8059.00	89.66	183.67	217.6	-1667.54	-1335.70	6858.94	1999.94	1814.55	95.00	1.72	-0.45	-1.66
	8153.00	89.88	180.42	217.6	-1761.46	-1339.05	6859.32	2000.32	1908.21	94.00	3.47	0.23	-3.46
	8248.00	90.31	180.15	220.3	-1856.46	-1339.52	6859.16	2000.16	2002.59	95.00	0.53	0.45	-0.28
	8342.00	90.18	181.10	223.0	-1950.45	-1340.55	6858.76	1999.76	2096.04	94.00	1.02	-0.14	1.01
	8437.00	89.88	182.24	225.7	-2045.41	-1343.32	6858.71	1999.71	2190.65	95.00	1.24	-0.32	1.20
	8531.00	89.78	181.18	225.7	-2139.37	-1346.12	6858.99	1999.99	2284.27	94.00	1.13	-0.11	-1.13
	8626.00	89.75	178.73	225.7	-2234.36	-1346.05	6859.38	2000.38	2378.58	95.00	2.58	-0.03	-2.58
	8720.00	90.12	178.87	228.4	-2328.34	-1344.08	6859.48	2000.48	2471.66	94.00	0.42	0.39	0.15
	8815.00	89.91	179.88	228.4	-2423.33	-1343.04	6859.46	2000.46	2565.86	95.00	1.09	-0.22	1.06
	8910.00	89.82	179.38	231.1	-2518.33	-1342.43	6859.68	2000.68	2660.11	95.00	0.53	-0.09	-0.53
	9005.00	89.57	178.95	231.1	-2613.32	-1341.04	6860.19	2001.19	2754.25	95.00	0.52	-0.26	-0.45
	9099.00	89.57	179.22	233.8	-2707.30	-1339.54	6860.89	2001.89	2847.39	94.00	0.29	0.00	0.29
	9194.00	89.88	179.62	233.8	-2802.30	-1338.58	6861.35	2002.35	2941.60	95.00	0.53	0.33	0.42
	9289.00	90.83	179.48	233.8	-2897.29	-1337.83	6860.76	2001.76	3035.83	95.00	1.01	1.00	-0.15
	9383.00	90.62	179.22	236.5	-2991.28	-1336.77	6859.57	2000.57	3129.02	94.00	0.36	-0.22	-0.28
	9478.00	90.86	179.49	236.5	-3086.26	-1335.70	6858.34	1999.34	3223.21	95.00	0.38	0.25	0.28
	9573.00	90.46	179.06	239.2	-3181.25	-1334.50	6857.25	1998.25	3317.38	95.00	0.62	-0.42	-0.45
	9667.00	91.02	178.60	239.2	-3275.22	-1332.58	6856.04	1997.04	3410.45	94.00	0.77	0.60	-0.49
	9762.00	90.37	177.55	239.2	-3370.16	-1329.39	6854.88	1995.88	3504.34	95.00	1.30	-0.68	-1.11
	9857.00	91.20	177.44	239.2	-3465.06	-1325.24	6853.58	1994.58	3598.07	95.00	0.88	0.87	-0.12
	9951.00	90.83	177.36	239.2	-3558.95	-1320.97	6851.92	1992.92	3690.79	94.00	0.40	-0.39	-0.09
	10046.00	91.08	177.66	241.9	-3653.84	-1316.85	6850.33	1991.33	3784.52	95.00	0.41	0.26	0.32
	10140.00	91.32	176.99	241.9	-3747.72	-1312.46	6848.37	1989.37	3877.21	94.00	0.76	0.26	-0.71
	10235.00	91.20	176.42	244.6	-3842.54	-1307.00	6846.28	1987.28	3970.70	95.00	0.61	-0.13	-0.60
	10329.00	90.25	176.53	244.6	-3936.35	-1301.22	6845.09	1986.09	4063.16	94.00	1.02	-1.01	0.12
	10424.00	89.75	180.37	244.6	-4031.30	-1298.65	6845.09	1986.09	4157.13	95.00	4.08	-0.53	4.04
	10519.00	89.88	180.36	247.3	-4126.30	-1299.26	6845.39	1986.39	4251.53	95.00	0.14	0.14	-0.01
	10613.00	90.12	179.88	247.3	-4220.30	-1299.45	6845.39	1986.39	4344.88	94.00	0.57	0.26	-0.51
	10708.00	89.75	179.77	250.0	-4315.30	-1299.16	6845.50	1986.50	4439.17	95.00	0.41	-0.39	-0.12
	10803.00	89.94	183.11	250.0	-4410.25	-1301.55	6845.76	1986.76	4533.74	95.00	3.52	0.20	3.52
	10898.00	89.97	182.75	250.0	-4505.13	-1306.41	6845.83	1986.83	4628.52	95.00	0.38	0.03	-0.38
	10992.00	90.22	182.06	250.0	-4599.05	-1310.35	6845.68	1986.68	4722.24	94.00	0.78	0.27	-0.73
	11087.00	89.97	183.00	250.0	-4693.95	-1314.54	6845.52	1986.52	4816.97	95.00	1.02	-0.26	0.99
	11182.00	90.00	182.70	252.7	-4788.83	-1319.27	6845.54	1986.54	4911.74	95.00	0.32	0.03	-0.32
	11276.00	89.72	182.35	252.7	-4882.74	-1323.41	6845.77	1986.77	5005.48	94.00	0.48	-0.30	-0.37
	11371.00	89.88	182.23	252.7	-4977.67	-1327.21	6846.11	1987.11	5100.18	95.00	0.21	0.17	-0.13
	11466.00	88.00	180.16	252.7	-5072.62	-1329.19	6847.86	1988.86	5194.69	95.00	2.94	-1.98	-2.18
	11561.00	89.94	182.75	252.7	-5167.56	-1331.60	6849.57	1990.57	5289.25	95.00	3.41	2.04	2.73
	11655.00	90.06	182.36	252.7	-5261.47	-1335.79	6849.57	1990.57	5382.99	94.00	0.43	0.13	-0.41
	11750.00	90.09	181.90	255.4	-5356.40	-1339.32	6849.45	1990.45	5477.67	95.00	0.49	0.03	-0.48
	11845.00	89.94	182.34	255.4	-5451.34	-1342.83	6849.42	1990.42	5572.34	95.00	0.49	-0.16	0.46
	11939.00	90.00	183.06	255.4	-5545.23	-1347.26	6849.47	1990.47	5666.10	94.00	0.77	0.06	0.77
	12034.00	90.40	182.73	255.4	-5640.11	-1352.06	6849.14	1990.14	5760.87	95.00	0.55	0.42	-0.35
	12129.00	90.34	182.40	255.4	-5735.01	-1356.31	6848.53	1989.53	5855.61	95.00	0.35	-0.06	-0.35
	12223.00	90.77	181.76	255.4	-5828.94	-1359.72	6847.62	1988.62	5949.28	94.00	0.82	0.46	-0.68
	12318.00	90.68	182.18	252.7	-5923.88	-1362.99	6846.41	1987.41	6043.93	95.00	0.45	-0.09	0.44
	12413.00	90.43	181.25	255.4	-6018.83	-1365.83	6845.49	1986.49	6138.55	95.00	1.01	-0.26	-0.98
	12507.00	89.91	180.77	255.4	-6112.82	-1367.49	6845.21	1986.21	6232.06	94.00	0.75	-0.55	-0.51

	12602.00	90.40	180.76	255.4	-6207.81	-1368.76	6844.96	1985.96	6326.53	95.00	0.52	0.52	-0.01
	12696.00	90.52	181.10	258.1	-6301.79	-1370.28	6844.20	1985.20	6420.03	94.00	0.38	0.13	0.36
	12791.00	90.58	180.73	258.1	-6396.77	-1371.80	6843.29	1984.29	6514.52	95.00	0.39	0.06	-0.39
	12886.00	90.31	181.04	255.4	-6491.76	-1373.27	6842.55	1983.55	6609.01	95.00	0.43	-0.28	0.33
	12980.00	89.54	180.57	255.4	-6585.75	-1374.59	6842.68	1983.68	6702.48	94.00	0.96	-0.82	-0.50
	13075.00	89.35	180.52	255.4	-6680.74	-1375.49	6843.60	1984.60	6796.91	95.00	0.21	-0.20	-0.05
	13170.00	89.63	180.62	390.6	-6775.73	-1376.44	6844.44	1985.44	6891.34	95.00	0.31	0.29	0.11
	13264.00	89.63	179.61	258.1	-6869.73	-1376.63	6845.05	1986.05	6984.69	94.00	1.07	-0.00	-1.07
	13359.00	89.51	179.54	260.8	-6964.72	-1375.92	6845.76	1986.76	7078.93	95.00	0.15	-0.13	-0.07
	13454.00	89.60	178.88	260.8	-7059.71	-1374.61	6846.50	1987.50	7173.09	95.00	0.70	0.09	-0.69
	13549.00	89.45	178.14	263.5	-7154.68	-1372.14	6847.29	1988.29	7267.08	95.00	0.79	-0.16	-0.78
	13643.00	90.43	179.39	263.5	-7248.65	-1370.11	6847.39	1988.39	7360.15	94.00	1.69	1.04	1.33
	13738.00	90.06	179.47	263.5	-7343.64	-1369.17	6846.98	1987.98	7454.36	95.00	0.40	-0.39	0.08
	13832.00	90.06	179.20	263.5	-7437.64	-1368.08	6846.88	1987.88	7547.55	94.00	0.29	-0.00	-0.29
	13927.00	89.75	178.67	263.5	-7532.62	-1366.31	6847.04	1988.04	7641.65	95.00	0.65	-0.33	-0.56
	14022.00	89.85	179.35	266.2	-7627.61	-1364.67	6847.37	1988.37	7735.77	95.00	0.72	0.11	0.72
	14117.00	89.72	179.06	266.2	-7722.60	-1363.35	6847.73	1988.73	7829.93	95.00	0.33	-0.14	-0.31
	14211.00	89.88	178.58	269.0	-7816.58	-1361.42	6848.05	1989.05	7923.01	94.00	0.54	0.17	-0.51
	14306.00	90.18	179.41	269.0	-7911.56	-1359.75	6848.01	1989.01	8017.12	95.00	0.93	0.32	0.87
	14400.00	90.34	178.07	266.2	-8005.53	-1357.68	6847.58	1988.58	8110.18	94.00	1.44	0.17	-1.43
	14495.00	90.31	178.83	269.0	-8100.50	-1355.11	6847.04	1988.04	8204.17	95.00	0.80	-0.03	0.80
	14590.00	90.34	178.49	269.0	-8195.47	-1352.89	6846.50	1987.50	8298.20	95.00	0.36	0.03	-0.36
	14685.00	90.12	178.85	271.7	-8290.44	-1350.69	6846.12	1987.12	8392.24	95.00	0.44	-0.23	0.38
	14874.00	90.18	179.47	269.0	-8479.42	-1347.92	6845.62	1986.62	8579.55	189.00	0.33	0.03	0.33
	14969.00	90.40	178.84	271.7	-8574.41	-1346.52	6845.14	1986.14	8673.69	95.00	0.70	0.23	-0.66
	15063.00	90.22	178.54	269.0	-8668.38	-1344.37	6844.64	1985.64	8766.74	94.00	0.37	-0.19	-0.32
	15158.00	90.15	178.49	271.7	-8763.35	-1341.91	6844.33	1985.33	8860.74	95.00	0.09	-0.07	-0.05
	15253.00	90.31	180.03	271.7	-8858.34	-1340.68	6843.95	1984.95	8954.91	95.00	1.63	0.17	1.62
	15347.00	90.40	179.66	271.7	-8952.34	-1340.42	6843.36	1984.36	9048.21	94.00	0.41	0.10	-0.39
	15442.00	90.12	179.29	271.7	-9047.33	-1339.55	6842.93	1983.93	9142.43	95.00	0.49	-0.29	-0.39
	15537.00	90.09	178.96	271.7	-9142.32	-1338.10	6842.76	1983.76	9236.57	95.00	0.35	-0.03	-0.35
	15631.00	89.94	178.04	271.7	-9236.29	-1335.64	6842.73	1983.73	9329.58	94.00	0.99	-0.16	-0.98
	15726.00	90.00	177.71	269.0	-9331.22	-1332.12	6842.78	1983.78	9423.42	95.00	0.35	0.06	-0.35
	15820.00	90.09	177.05	271.7	-9425.12	-1327.82	6842.71	1983.71	9516.15	94.00	0.71	0.10	-0.70
	15915.00	90.40	175.93	269.0	-9519.94	-1322.01	6842.30	1983.30	9609.60	95.00	1.22	0.33	-1.18
	16009.00	90.31	174.91	271.7	-9613.64	-1314.50	6841.72	1982.72	9701.74	94.00	1.09	-0.10	-1.09
	16104.00	90.34	174.46	269.0	-9708.23	-1305.70	6841.18	1982.18	9794.61	95.00	0.47	0.03	-0.47
	16199.00	90.18	178.00	269.0	-9803.01	-1299.46	6840.75	1981.75	9887.97	95.00	3.73	-0.17	3.73
	16293.00	89.66	180.29	269.0	-9896.99	-1298.05	6840.88	1981.88	9981.12	94.00	2.50	-0.55	2.44
	16388.00	89.78	182.35	269.0	-9991.96	-1300.24	6841.35	1982.35	10075.68	95.00	2.17	0.13	2.17
	16483.00	89.91	182.88	271.7	-10086.86	-1304.58	6841.60	1982.60	10170.42	95.00	0.57	0.14	0.56
	16578.00	89.94	181.64	269.0	-10181.78	-1308.32	6841.73	1982.73	10265.12	95.00	1.31	0.03	-1.31
	16672.00	89.85	181.99	271.7	-10275.73	-1311.30	6841.90	1982.90	10358.76	94.00	0.38	-0.10	0.37
	16767.00	89.57	180.53	271.7	-10370.71	-1313.39	6842.38	1983.38	10453.30	95.00	1.56	-0.29	-1.54
	16862.00	89.57	181.00	274.4	-10465.70	-1314.66	6843.09	1984.09	10547.77	95.00	0.49	-0.00	0.49
	16957.00	89.57	181.45	274.4	-10560.67	-1316.69	6843.81	1984.81	10642.31	95.00	0.47	0.00	0.47
	17052.00	89.82	181.82	271.7	-10655.63	-1319.40	6844.31	1985.31	10736.92	95.00	0.47	0.26	0.39
	17146.00	89.78	180.98	271.7	-10749.60	-1321.69	6844.64	1985.64	10830.50	94.00	0.89	-0.04	-0.89
	17241.00	89.75	180.84	274.4	-10844.59	-1323.20	6845.03	1986.03	10924.99	95.00	0.15	-0.03	-0.15
	17336.00	89.51	181.07	274.4	-10939.57	-1324.79	6845.64	1986.64	11019.49	95.00	0.35	-0.25	0.24
	17431.00	89.66	181.70	266.2	-11034.54	-1327.08	6846.33	1987.33	11114.06	95.00	0.68	0.16	0.66
	17525.00	89.45	181.82	271.7	-11128.50	-1329.97	6847.06	1988.06	11207.69	94.00	0.26	-0.22	0.13
Projection	17587.00	89.45	181.82	N/A	-11190.46	-1331.94	6847.66	1988.66	11269.45	62.00	0.00	0.01	-0.00