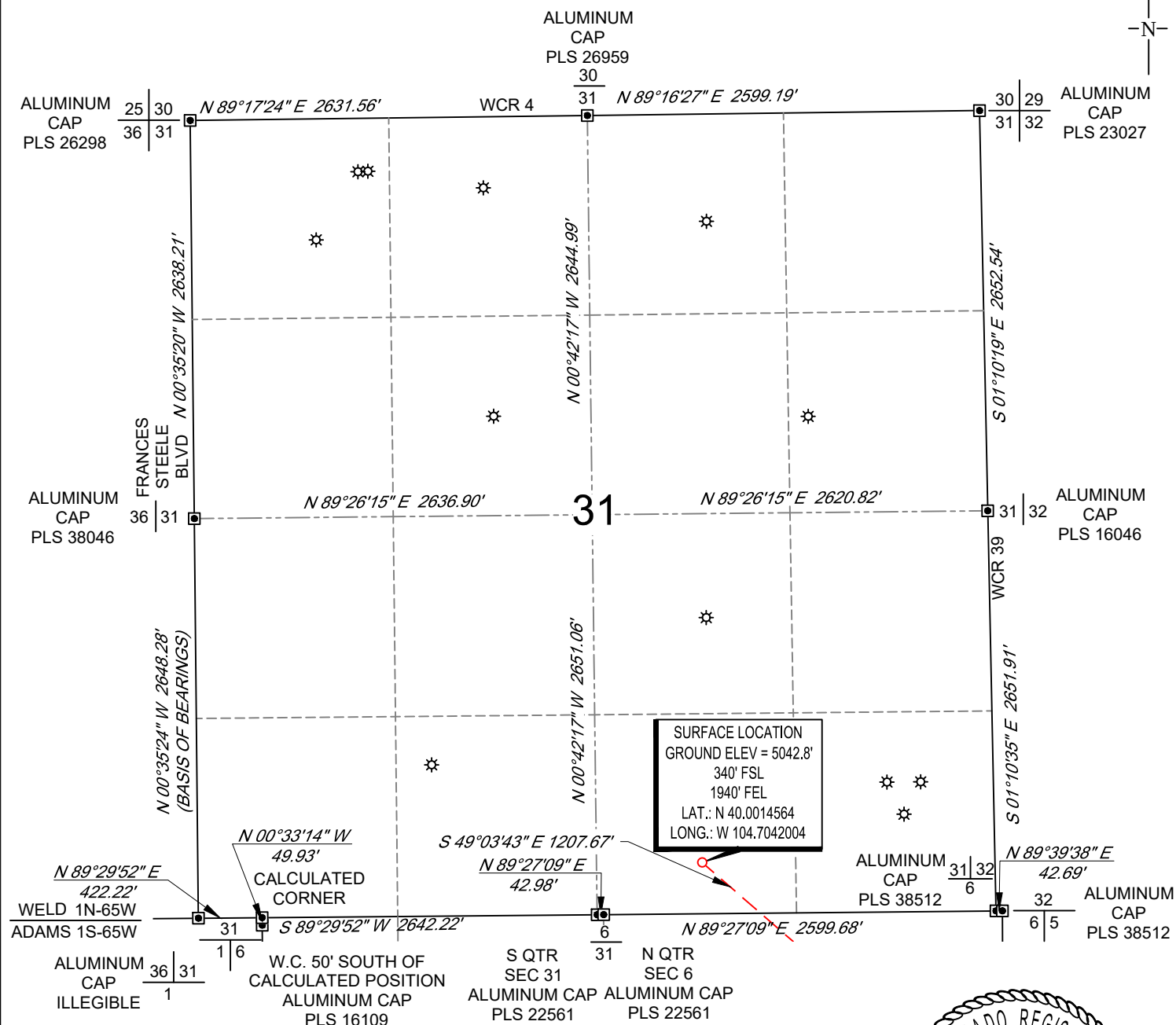


SCALE: 1" = 1000'
0' 500' 1000'

WELL LOCATION MAP

SHL SW/4 SE/4, SECTION 31, TOWNSHIP 1-N, RANGE 65-W
LPL LOT 1, SECTION 6, TOWNSHIP 1-S, RANGE 65-W
BHL SE/4 SE/4, SECTION 7, TOWNSHIP 1-S, RANGE 65-W
WELD AND ADAMS COUNTY, COLORADO



NOTES

1. Horizontal (NAD 83) and vertical (NAVD 88) datum is based on the Trimble VRS Network or OPUS Solution.
2. All directions, distances, and dimensions shown hereon are based on coordinates from the "Colorado coordinate system of 1983 north zone" (article 52 of title 38, C.R.S.).
3. All section line dimensions shown hereon are based on field measurements of existing monuments and/or physical evidence found in the field unless otherwise indicated.
4. Physical features shown hereon are for graphical representation only.
5. See Form 2A, if applicable for visible improvements within 500' of wellhead.
6. Distances to nearest section lines are measured perpendicularly.
7. This is not a land survey nor land survey plat.

PDOP Reading: 1.5 Instrument Operator: **Eric Purcell**

Date Surveyed: **04/20/2018**



SURVEYOR'S STATEMENT

The undersigned hereby states that the well location shown hereon was staked on the ground based on existing monumentation and/or physical evidence found in the field and is correct to the best of my knowledge, information and belief.



VERDAD RESOURCES COUNTY LINE 3107-11H JOB NO. 116941	JLS	07/12/2018	REVISION:	
	SHEET :	1 OF 3	PAV	05/28/2020
	FILE:	LO_COUNTY_LINE_3107_11H_REV3		

SCALE: 1" = 1000'

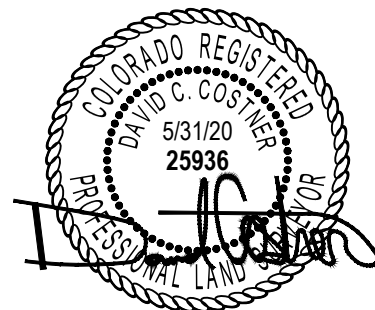
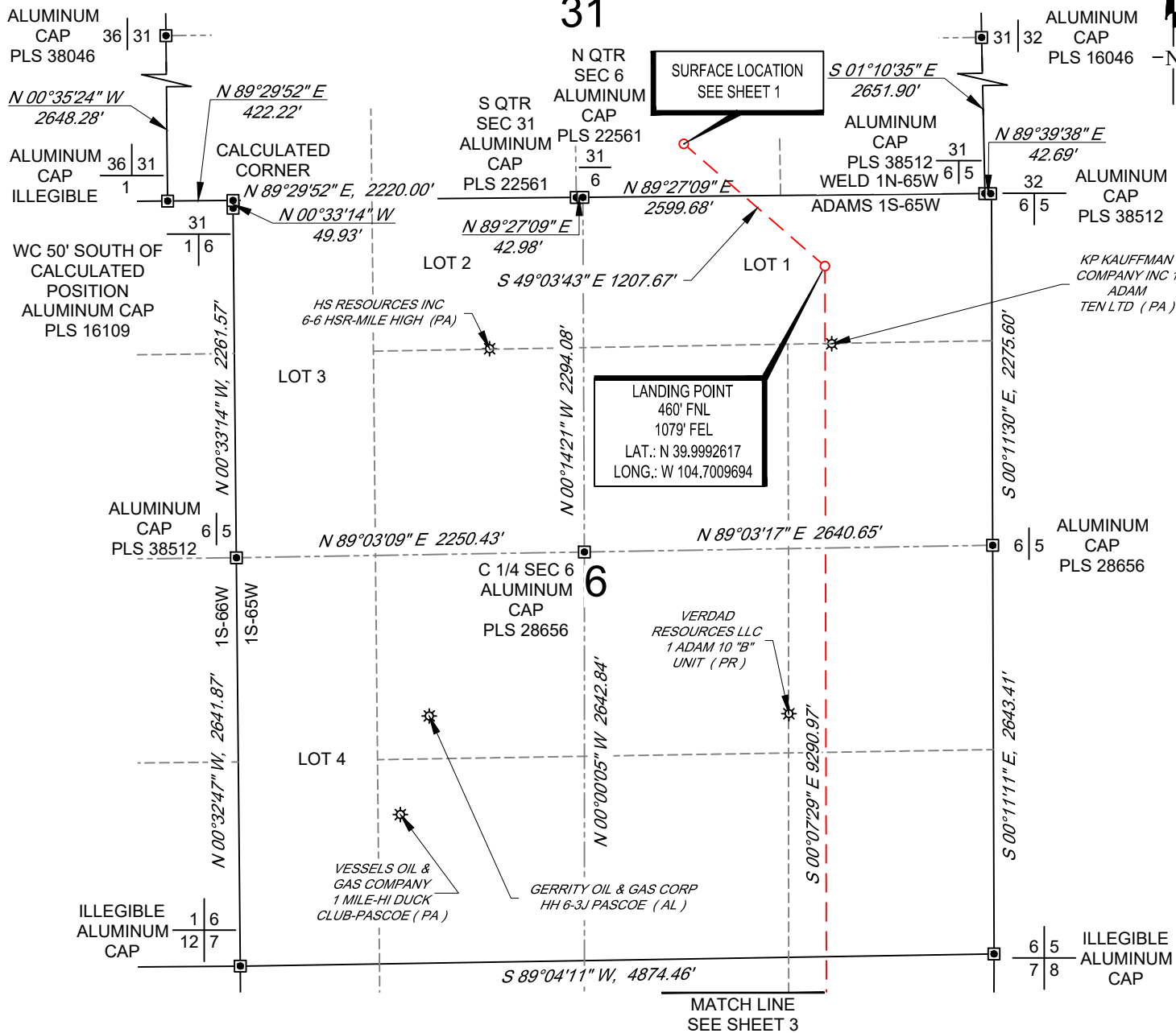
0' 500' 1000'

WELL LOCATION MAP

SHL SW/4 SE/4, SECTION 31, TOWNSHIP 1-N, RANGE 65-W
 LPL LOT 1, SECTION 6, TOWNSHIP 1-S, RANGE 65-W
 BHL SE/4 SE/4, SECTION 7, TOWNSHIP 1-S, RANGE 65-W
 WELD AND ADAMS COUNTY, COLORADO



31



VERDAD RESOURCES COUNTY LINE 3107-11H JOB NO. 116941	MML	04/25/2018	REVISION:	
	SHEET :	2 OF 3	INT	DATE
	FILE:LO_COUNTY_LINE_3107_11H_REV3	PAV	05/27/2020	



SCALE: 1" = 1000'
0' 500' 1000'

BOTTOM HOLE MAP

SHL SW/4 SE/4, SECTION 31, TOWNSHIP 1-N, RANGE 65-W
LPL LOT 1, SECTION 6, TOWNSHIP 1-S, RANGE 65-W
BHL SE/4 SE/4, SECTION 7, TOWNSHIP 1-S, RANGE 65-W
WELD AND ADAMS COUNTY, COLORADO



MATCH LINE
SEE SHEET 2

ILLEGIBLE
ALUMINUM
CAP

1 6
12 7

N 89°04'11" E, 4874.46'

6 5
7 8

ILLEGIBLE
ALUMINUM
CAP

LOT 1

N 00°18'46" W, 2645.41'

N 00°04'32" E 2644.44'

S 00°07'29" E 9290.97'

S 00°04'52" W, 2642.61'

ALUMINUM
CAP
PLS 6937

N 89°02'17" E 2207.39'

7

N 89°01'49" E 2648.93'

ALUMINUM
CAP
PLS 23519

C 1/4 SEC 7
NO. 4
REBAR

N 01°00'27" W, 2639.16'

N 00°16'50" W 2640.31'

VERDAD
RESOURCES LLC
1 EDNA (PR)

S 00°00'46" E, 2642.13'

LOT 2

VERDAD
RESOURCES LLC
1 GREEN (PR)

BOTTOM HOLE LOCATION
460' FSL
1070' FEL
LAT.: N 39.9737568
LONG.: W 104.7011959

S 89°03'49" W, 2173.89'

7

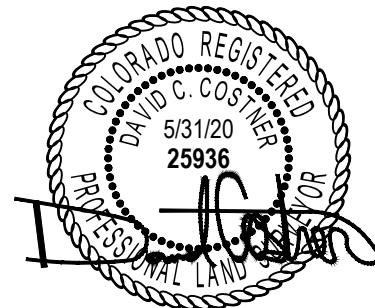
S 89°03'57" W, 2636.56'

7 8
18 17

ILLEGIBLE
ALUMINUM
CAP

ALUMINUM
CAP
PLS 28285

ALUMINUM
CAP
PLS 25937



VERDAD RESOURCES
COUNTY LINE 3107-11H
JOB NO. 116941

MML 04/25/2018

REVISION:

SHEET : 3 OF 3

INT DATE

FILE:LO_COUNTY_LINE_3107_11H_REV3

PAV 05/27/2020

