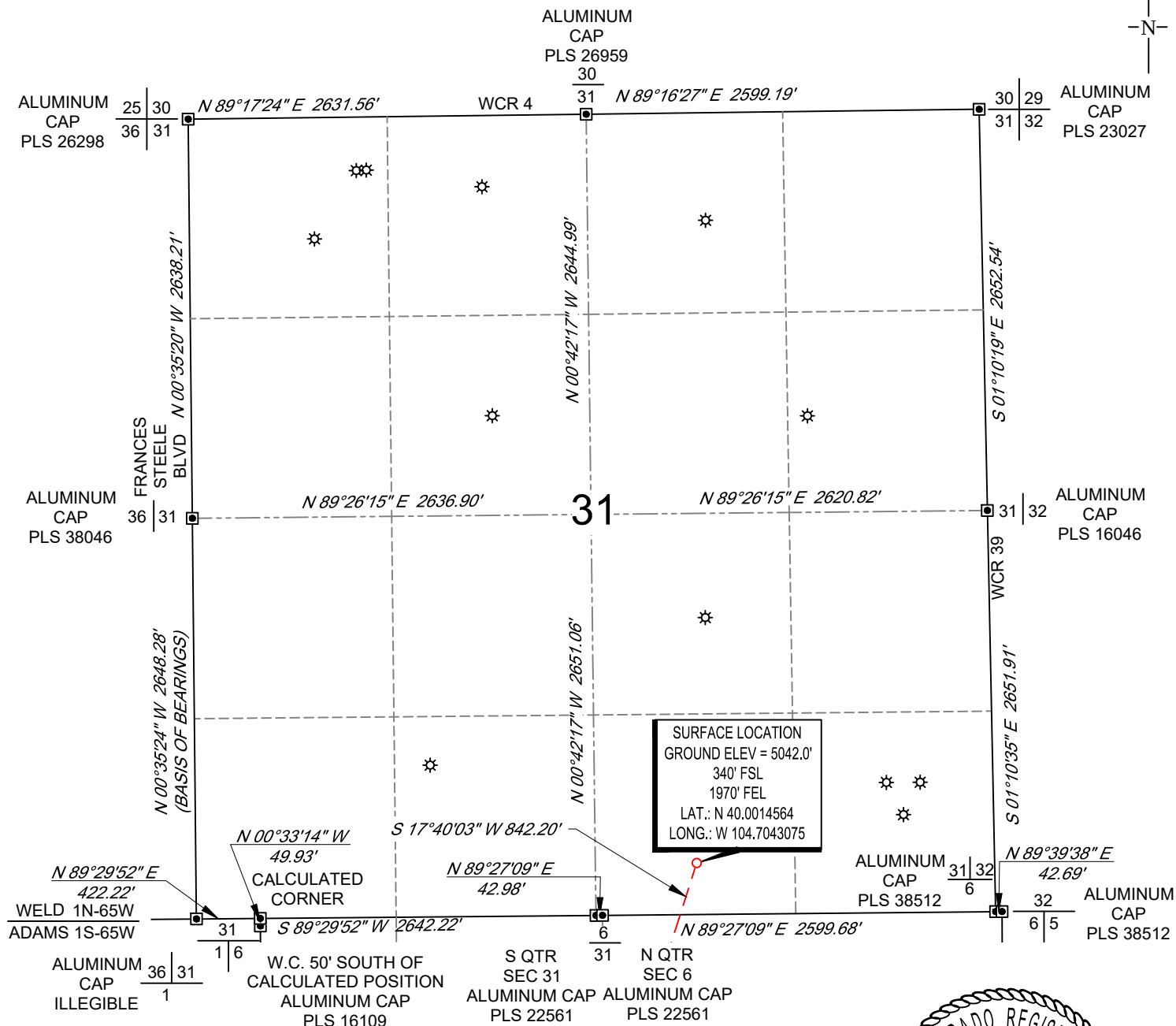


SCALE: 1" = 1000'  
0' 500' 1000'

# WELL LOCATION MAP

SHL SW/4 SE/4, SECTION 31, TOWNSHIP 1-N, RANGE 65-W  
LPL LOT 1, SECTION 6, TOWNSHIP 1-S, RANGE 65-W  
BHL SW/4 SE/4, SECTION 7, TOWNSHIP 1-S, RANGE 65-W  
WELD AND ADAMS COUNTY, COLORADO



## NOTES

1. Horizontal (NAD 83) and vertical (NAVD 88) datum is based on the Trimble VRS Network or OPUS Solution.
2. All directions, distances, and dimensions shown hereon are based on coordinates from the "Colorado coordinate system of 1983 north zone" (article 52 of title 38, C.R.S.).
3. All section line dimensions shown hereon are based on field measurements of existing monuments and/or physical evidence found in the field unless otherwise indicated.
4. Physical features shown hereon are for graphical representation only.
5. See Form 2A, if applicable for visible improvements within 500' of wellhead.
6. Distances to nearest section lines are measured perpendicularly.
7. This is not a land survey nor land survey plat.

PDOP Reading: 1.5 Instrument Operator: **Eric Purcell**  
Date Surveyed: **04/20/2018**



## SURVEYOR'S STATEMENT

The undersigned hereby states that the well location shown hereon was staked on the ground based on existing monumentation and/or physical evidence found in the field and is correct to the best of my knowledge, information and belief.



VERDAD RESOURCES COUNTY LINE 3107-09H JOB NO. 116941	JLS	07/12/2018	REVISION:	
	SHEET :	1 OF 3	PAV	05/28/2020
	FILE:LO_COUNTY_LINE_3107_09H_REV3			

SCALE: 1" = 1000'

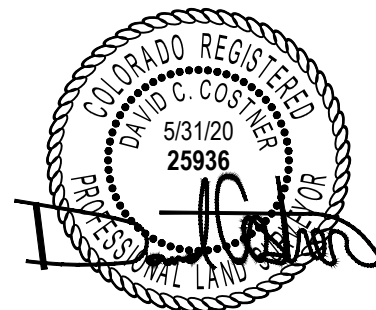
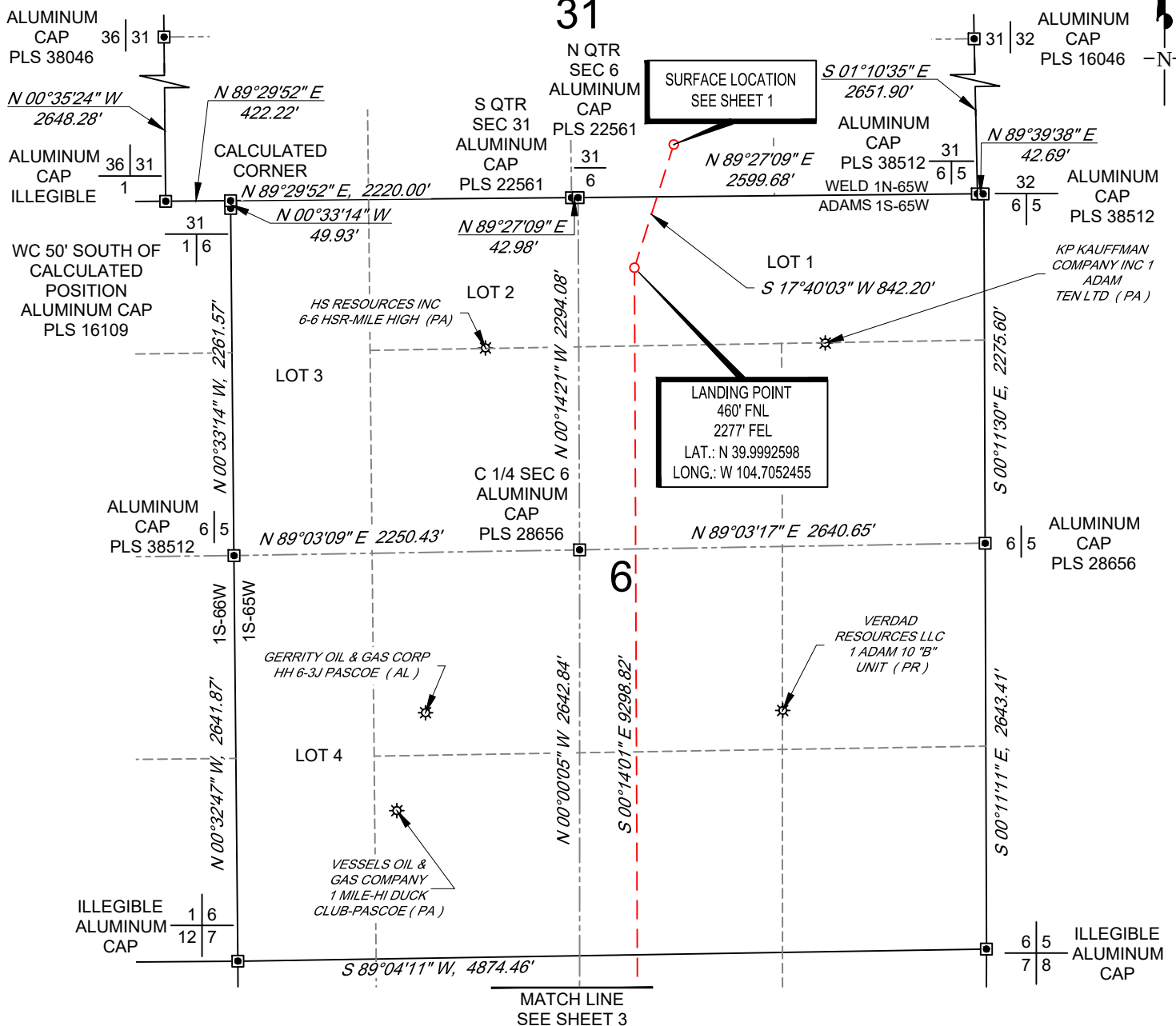
0' 500' 1000'

# WELL LOCATION MAP

SHL SW/4 SE/4, SECTION 31, TOWNSHIP 1-N, RANGE 65-W  
 LPL LOT 1, SECTION 6, TOWNSHIP 1-S, RANGE 65-W  
 BHL SW/4 SE/4, SECTION 7, TOWNSHIP 1-S, RANGE 65-W  
 WELD AND ADAMS COUNTY, COLORADO



31



VERDAD RESOURCES  
 COUNTY LINE 3107-09H  
 JOB NO. 116941

MML 04/25/2018

REVISION:

SHEET : 2 OF 3

INT DATE

FILE:LO\_COUNTY\_LINE\_3107\_09H\_REV3

PAV 05/27/2020



SCALE: 1" = 1000'

0' 500' 1000'

# BOTTOM HOLE MAP

SHL SW/4 SE/4, SECTION 31, TOWNSHIP 1-N, RANGE 65-W  
 LPL LOT 1 SECTION 6, TOWNSHIP 1-S, RANGE 65-W  
 BHL SW/4 SE/4, SECTION 7, TOWNSHIP 1-S, RANGE 65-W  
 WELD AND ADAMS COUNTY, COLORADO



MATCH LINE  
SEE SHEET 2

ILLEGIBLE  
ALUMINUM  
CAP

1 6  
12 7

N 89°04'11" E, 4874.46'

6 5  
7 8 ILLEGIBLE  
ALUMINUM  
CAP

LOT 1

PATINA OIL & GAS  
CORPORATION 1 VAN  
AIRE (PA)

ALUMINUM  
CAP  
PLS 6937

12 7

N 89°02'17" E 2207.39'

C 1/4 SEC 7  
NO. 4  
REBAR

N 89°01'49" E 2648.93'

ALUMINUM  
CAP  
PLS 23519

7 8

LOT 2

VERDAD  
RESOURCES LLC  
1 GREEN (PR)

VERDAD  
RESOURCES LLC  
1 EDNA (PR)

BOTTOM HOLE LOCATION  
460' FSL  
2250' FEL  
LAT.: N 39.9737331  
LONG.: W 104.7054075

ALUMINUM  
CAP  
PLS 28285

12 7  
13 18

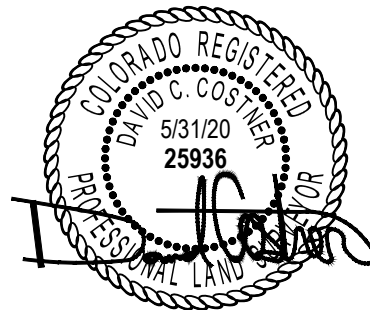
S 89°03'49" W, 2173.89'

ALUMINUM  
CAP  
PLS 25937

7  
18

S 89°03'57" W, 2636.56'

7 8  
18 17 ILLEGIBLE  
ALUMINUM  
CAP



VERDAD RESOURCES  
COUNTY LINE 3107-09H  
JOB NO. 116941

MML 04/25/2018

SHEET : 3 OF 3

FILE:LO\_COUNTY\_LINE\_3107\_09H\_REV3

REVISION:

INT DATE

PAV 05/27/2020

