

LEGEND:

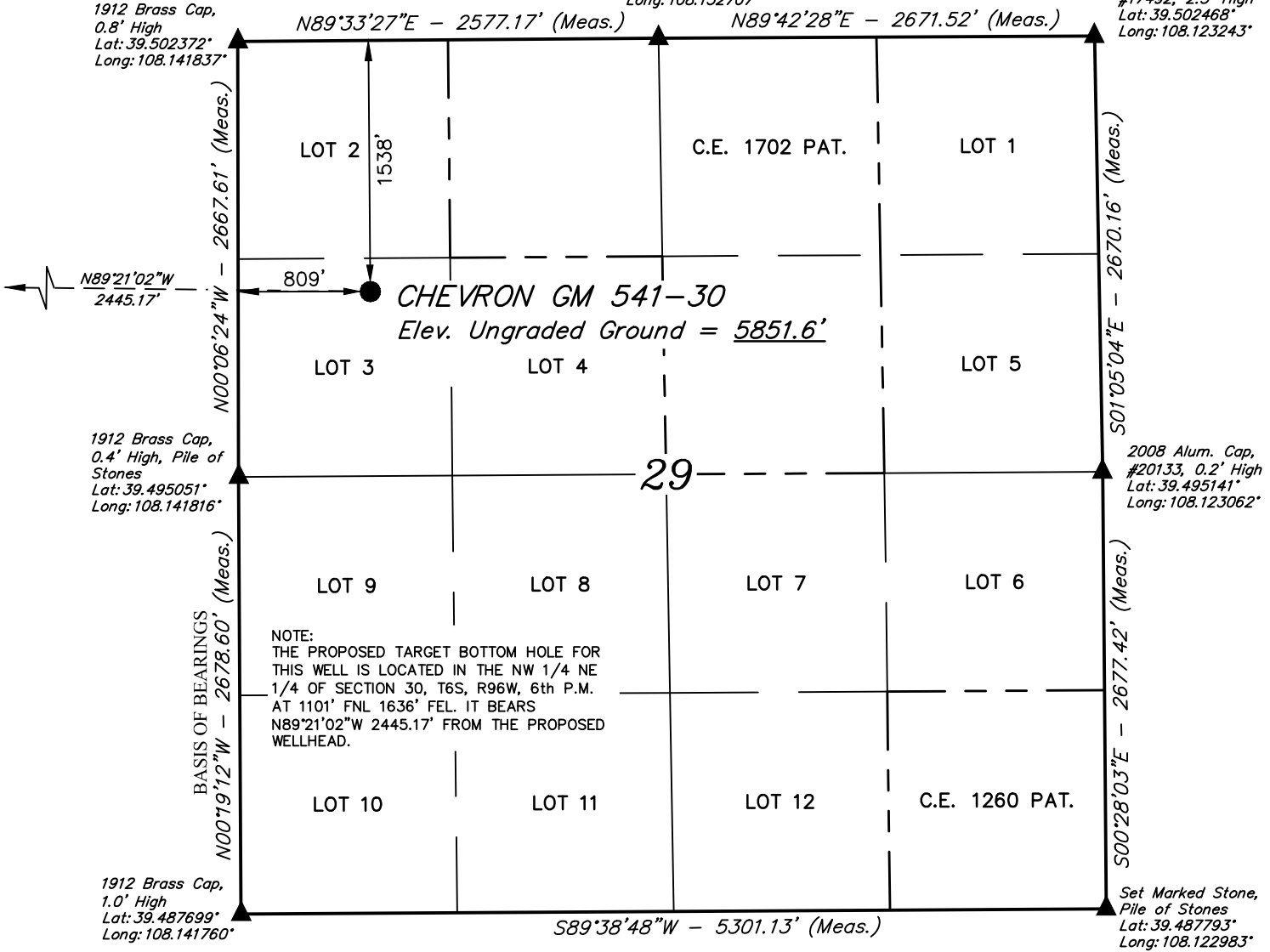
- = PROPOSED WELLHEAD.
- ▲ = SECTION CORNERS LOCATED. (NAD 83)

T6S, R96W, 6th P.M.

2008 Alum. Cap,
#20133, Flush
W/Ground
Lat: 39.502429°
Long: 108.132707°

2005 Alum. Cap,
#17492, 2.5' High
Lat: 39.502468°
Long: 108.123243°

1912 Brass Cap,
0.8' High
Lat: 39.502372°
Long: 108.141837°



1912 Brass Cap,
0.4' High, Pile of
Stones
Lat: 39.495051°
Long: 108.141816°

2008 Alum. Cap,
#20133, 0.2' High
Lat: 39.495141°
Long: 108.123062°

1912 Brass Cap,
1.0' High
Lat: 39.487699°
Long: 108.141760°

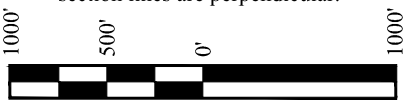
Set Marked Stone,
Pile of Stones
Lat: 39.487793°
Long: 108.122983°

NOTE:
THE PROPOSED TARGET BOTTOM HOLE FOR
THIS WELL IS LOCATED IN THE NW 1/4 NE
1/4 OF SECTION 30, T6S, R96W, 6th P.M.
AT 1101' FNL 1636' FEL. IT BEARS
N89°21'02"W 2445.17' FROM THE PROPOSED
WELLHEAD.

PDOP = 2.8

NAD 83 (SURFACE LOCATION)
LATITUDE = 39°29'53.41" (39.498169)
LONGITUDE = 108°08'20.26" (108.138960)
STATE PLANE NAD 83 (CO. CEN.)
N: 1617152.14 E: 2255411.92

NOTE:
• Distances referenced on plat to section lines are perpendicular.



CERTIFICATE

THIS IS TO CERTIFY THAT THE ABOVE PLAT WAS PREPARED AND LOCATION AS SHOWN WAS STAKED ON THE GROUND FROM FIELD NOTES OF ACTUAL SURVEYS MADE BY ME OR UNDER MY SUPERVISION AND THAT THE SAME ARE TRUE AND CORRECT TO THE BEST OF MY KNOWLEDGE AND BELIEF.

Handwritten Signature: Harold Mascher

REGISTERED LAND SURVEYOR
REGISTRATION NO. 38130
STATE OF COLORADO

PLAT #1

REV: 2 01-28-20 T.L.L. (BHL MOVE)

BASIS OF BEARINGS
BEARINGS ARE A BASED ASSUMPTION THAT THE WEST LINE OF THE SOUTHWEST 1/4 OF SECTION 29 BEARS N00°19'12"W. MONUMENTS DESCRIBED HEREON.

BASIS OF ELEVATION
BENCH MARK (H79) LOCATED IN THE NE 1/4 OF SECTION 35, T4S, R98W, 6th P.M., TAKEN FROM THE BULL FORK QUADRANGLE, COLORADO, 7.5 MINUTE SERIES, (TOPOGRAPHIC MAP) PUBLISHED BY THE UNITED STATES DEPARTMENT OF THE INTERIOR, GEOLOGICAL SURVEY. SAID ELEVATION IS MARKED AS BEING 8535 FEET.



UELS, LLC
Corporate Office * 85 South 200 East
Vernal, UT 84078 * (435) 789-1017



TEP Rocky Mountain LLC
CHEVRON GM 541-30 (SURFACE LOCATION)
LOT 3, SECTION 29, T6S, R96W, 6th P.M.
GARFIELD COUNTY, COLORADO

SURVEYED BY	DAYTON SLAUGH, B.H.	04-01-19	SCALE
DRAWN BY	M.D.	04-02-19	1" = 1000'

WELL LOCATION PLAT

T6S, R96W, 6th P.M.

LEGEND:

- = PROPOSED WELLHEAD.
- = TARGET BOTTOM HOLE.
- ▲ = SECTION CORNERS LOCATED. (NAD 83)
- △ = SECTION CORNERS RE-ESTABLISHED. (Not Set on Ground.) (NAD 83)

W.C. 1912 Brass
Cap, 1.5' High
Lat: 39.503325°
Long: 108.159400°

C.C. 1912 Brass Cap,
1.0' High, Mound of
Stones
Lat: 39.501269°
Long: 108.141842°

NW Cor. Sec. 29
1912 Brass Cap,
0.8' High
Lat: 39.502372°
Long: 108.141837°

S89°58'29"W - 4955.34' (True to C.C.)
S89°58'29"W - 4957.68' (True to True)

True Position
Lat: 39.501269°
Long: 108.141834°

True Position
Lat: 39.501256°
Long: 108.159398°

NOTE:
THE PROPOSED TARGET BOTTOM HOLE BEARS
N89°21'02"W 2445.17' FROM THE PROPOSED
WELLHEAD WHICH IS LOCATED IN LOT 3 OF
SECTION 29, T6S, R96W, 6th P.M. AT 1538'
FNL 809' FWL.

CHEVRON GM 541-30
Target Bottom Hole

See Detail "A"
@ Below

Surface
Location

W 1/4 Cor. Sec. 29
1912 Brass Cap,
0.4' High, Pile of
Stones
Lat: 39.495051°
Long: 108.141816°

1912 Brass Cap,
1.3' High
Lat: 39.494015°
Long: 108.159390°

12th GUIDE MERIDIAN WEST
N00°00'13"E - 2637.38' (Meas.)

1912 Brass Cap,
Flush W/Ground
Lat: 39.486777°
Long: 108.159385°

R R
97 96
W W

N89°21'44"W - 2681.22' (Meas. to True)

W.C. "190" Brass
Cap, 1.3' High,
Lat: 39.486715°
Long: 108.147923°

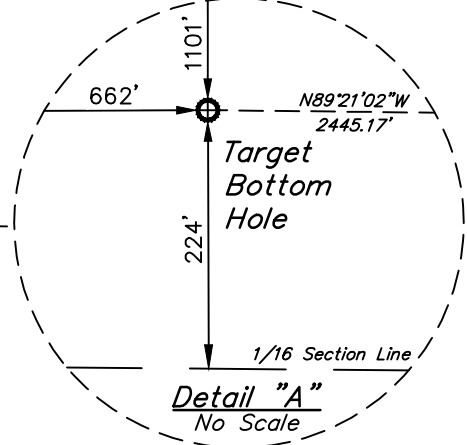
True Position
Lat: 39.486699°
Long: 108.149889°

2299.83' (True to C.C.)

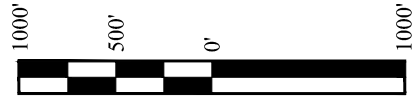
C.C. 1902 Brass
Cap, 0.7' High,
Lat: 39.486767°
Long: 108.141743°

SW Cor. Sec. 29
1912 Brass Cap,
1.0' High
Lat: 39.487699°
Long: 108.141760°

500°46'13"E
339.75' (Meas.)



NOTE:
• Distances referenced on plat to section lines are perpendicular.



NAD 83 (TARGET BOTTOM HOLE)
LATITUDE = 39°29'53.67" (39.498242)
LONGITUDE = 108°08'51.44" (108.147622)
STATE PLANE NAD 83 (CO. CEN.)
N: 1617250.00 E: 2252969.49

PLAT #1

CERTIFICATE

THIS IS TO CERTIFY THAT THE ABOVE PLAT WAS PREPARED AND THE LOCATION AS SHOWN WAS STAKED ON THE GROUND FROM FIELD NOTES OF ACTUAL SURVEYS MADE BY ME OR UNDER MY SUPERVISION AND THAT THE SAME ARE TRUE AND CORRECT TO THE BEST OF MY KNOWLEDGE AND BELIEF.



REV: 3 01-28-20 T.L.L. (BHL MOVE)

BASIS OF BEARINGS

BEARINGS ARE A BASED ASSUMPTION THAT THE WEST LINE OF THE SOUTHWEST 1/4 OF SECTION 29 BEARS N00°19'12"W. MONUMENTS DESCRIBED HEREON.

BASIS OF ELEVATION

BENCH MARK (H79) LOCATED IN THE NE 1/4 OF SECTION 35, T4S, R98W, 6th P.M., TAKEN FROM THE BULL FORK QUADRANGLE, COLORADO, 7.5 MINUTE SERIES, (TOPOGRAPHIC MAP) PUBLISHED BY THE UNITED STATES DEPARTMENT OF THE INTERIOR, GEOLOGICAL SURVEY. SAID ELEVATION IS MARKED AS BEING 8535 FEET.



TEP Rocky Mountain LLC

CHEVRON GM 541-30 (TARGET BOTTOM HOLE)
SW 1/4 NE 1/4, SECTION 30, T6S, R96W, 6th P.M.
GARFIELD COUNTY, COLORADO

SURVEYED BY	DAYTON SLAUGH, B.H.	04-01-19	SCALE
DRAWN BY	M.D.	04-01-19	1" = 1000'

WELL LOCATION PLAT



UELS, LLC
Corporate Office * 85 South 200 East
Vernal, UT 84078 * (435) 789-1017