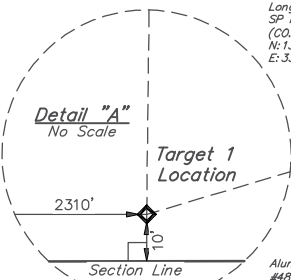
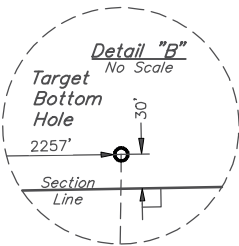


LEGEND:

- 90° SYMBOL
- PROPOSED WELLHEAD.
- TARGET 1 LOCATION.
- TARGET BOTTOM HOLE.
- SECTION CORNERS LOCATED. (NAD 83)
- SECTION CORNERS RE-ESTABLISHED. (Not Set on Ground.) (NAD 83)

LINE TABLE		
LINE	DIRECTION	LENGTH
L1	S34°24'46"W	643.81'



PDOP = 1.3

NAD 83 (SURFACE LOCATION)	NAD 83 (TARGET 1 LOCATION)
LATITUDE = 40°21'01.96" (40.350544°)	LATITUDE = 40°20'56.74" (40.349094°)
LONGITUDE = 104°21'57.74" (104.366040°)	LONGITUDE = 104°22'02.49" (104.367359°)
STATE PLANE NAD 83 (CO. NORTH)	STATE PLANE NAD 83 (CO. NORTH)
N: 1372564.64' E: 3316041.37'	N: 1372031.63' E: 3315680.63'
NAD 83 (TARGET BOTTOM HOLE)	NAD 83 (TARGET BOTTOM HOLE)
LATITUDE = 40°21'48.33" (40.363425°)	LATITUDE = 40°21'48.33" (40.363425°)
LONGITUDE = 104°22'01.58" (104.367105°)	LONGITUDE = 104°22'01.58" (104.367105°)
STATE PLANE NAD 83 (CO. NORTH)	STATE PLANE NAD 83 (CO. NORTH)
N: 1377252.82' E: 3315684.51'	N: 1377252.82' E: 3315684.51'

BASIS OF BEARINGS
TRANSVERSE MERCATOR PROJECTION WITH
A CENTRAL MERIDIAN OF 105°00'00".

BASIS OF ELEVATION
OPUS SOLUTION GENERATED NAVD 88



UELS, LLC
Corporate Office * 85 South 200 East
Vernal, UT 84078 * (435) 789-1017



T5N, R62W, 6th P.M.

1990 Alum. Cap,
#7242, 0.3' High
Lat: 40.377454°
Long: 104.374767°
SP NAD 83
(CO. NORTH)
N: 1382435.34
E: 3315995.98

1990 Alum. Cap,
#7242, 0.2' High
Lat: 40.370365°
Long: 104.374987°
SP NAD 83
(CO. NORTH)
N: 1379752.95
E: 3313456.20

1990 Alum. Cap,
#7242, 1.5' High
Lat: 40.363276°
Long: 104.375209°
SP NAD 83
(CO. NORTH)
N: 1377170.01
E: 3313427.13

1990 Alum. Cap,
#7242, 0.3' High
Lat: 40.356189°
Long: 104.375425°
SP NAD 83
(CO. NORTH)
N: 1374587.56
E: 3313399.71

Alum. Cap,
#4846, 0.5' High
Lat: 40.349101°
Long: 104.375646°
SP NAD 83
(CO. NORTH)
N: 1372005.01
E: 3313370.89

True Position
Lat: 40.377639°
Long: 104.365750°
SP NAD 83
(CO. NORTH)
N: 1382435.34
E: 3315995.98

1990 Alum. Cap,
#7242, 0.3' Below
Ground
Lat: 40.377824°
Long: 104.356706°
SP NAD 83
(CO. NORTH)
N: 1382535.22
E: 3318514.53

2012 Alum. Cap,
#38175, Flush
W/ Ground
Lat: 40.370625°
Long: 104.356813°
SP NAD 83
(CO. NORTH)
N: 1378912.43
E: 3318518.67

2016 Alum. Cap,
#28285, 0.5' Below Ground,
In Gravel Road
Lat: 40.363425°
Long: 104.356917°
SP NAD 83
(CO. NORTH)
N: 1377289.29
E: 3318523.51

1990 Alum. Cap,
#7242, Flush
W/ Ground
Lat: 40.356225°
Long: 104.357020°
SP NAD 83
(CO. NORTH)
N: 1374666.07
E: 3318528.56

Alum. Cap,
#4845, 1.2' High
Lat: 40.349024°
Long: 104.357125°
SP NAD 83
(CO. NORTH)
N: 1372042.87
E: 3318533.03

THIS IS TO CERTIFY THAT THE ABOVE SURVEY WAS MADE IN ACCORDANCE WITH THE NOTES OF ACTUAL SURVEYS MADE AND THAT THE SAME ARE TRUE AND CORRECT TO THE BEST OF MY KNOWLEDGE AND BELIEF.



REV: 1 10-18-18 C.JVIE (SURFACE LOCATION MOVE)

**BONANZA CREEK ENERGY
OPERATING COMPANY, LLC**

**STATE ANTELOPE
024-K21-31HNC**
SW 1/4 SE 1/4, SECTION 31, T5N, R62W, 6th P.M.
WELD COUNTY, COLORADO

SURVEYED BY	RYAN WILLIAMS, Z.R.	07-16-18	SCALE
DRAWN BY	C.JVIE	10-01-18	1" = 1000'

WELL LOCATION PLAT