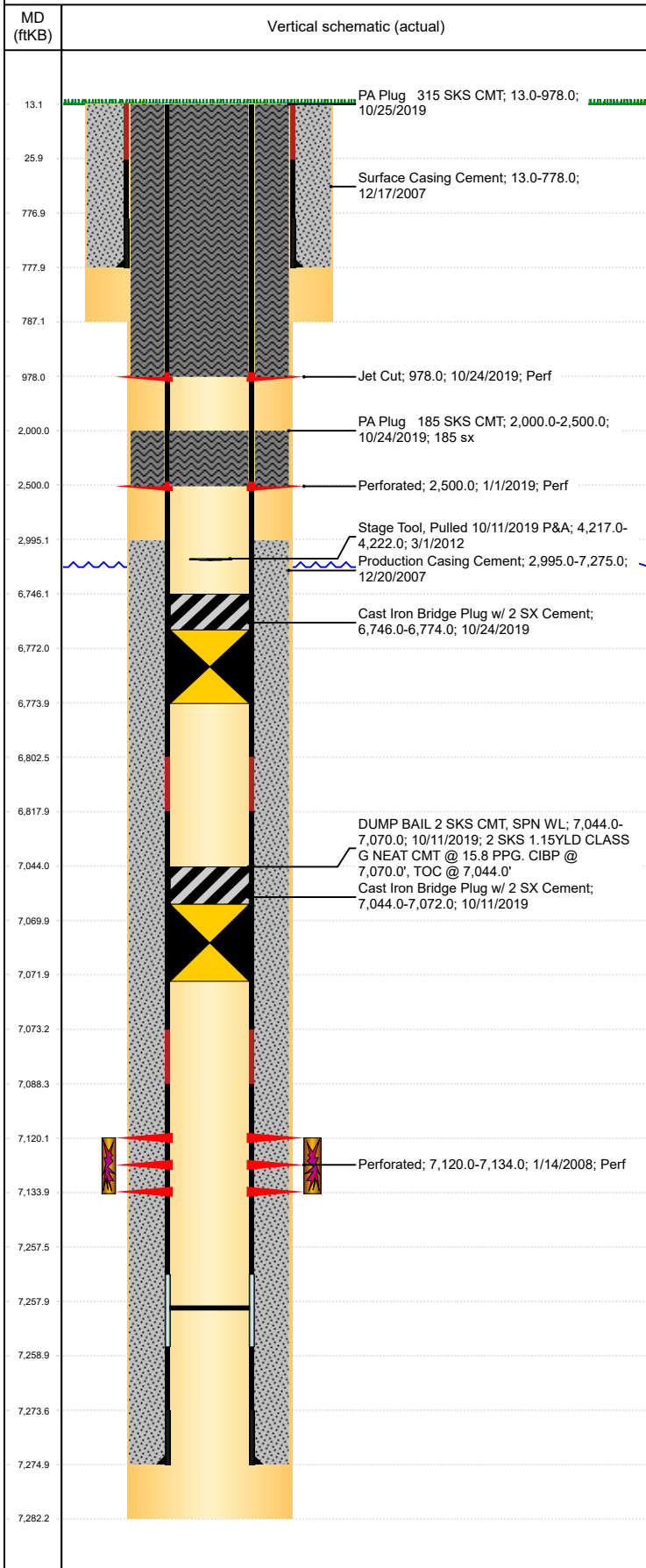


**Well Name: BOOTH USX EE25-14**

VERTICAL, ORIGINAL HOLE, 6/10/2020 9:36:14 AM



Well Header									
API 05-123-26590			Business Unit DJ BASIN			District 15		Well Config VERTICAL	
KB - GL / MSL (ft... 13.00		Spud Date 12/17/2007		P & A Date 1/7/2020		Well Production Status PA			SoRT Yes
Comment 10/9/2019, RU UNIT, LAY DOWN TBG FOR RIGLESS P&A.									
Surface Location (Congressional)									
Qtr 3 SE	Qtr 4 SW	Section 25	Twnshp 7	Twنشp... N	Range 65	Rng E/... W	Actual Latitude (°) 40.53894861	Actual Longitude (°) -104.61338397	
Wellbore Sections									
Section Des			Size (in)			Act Top, MD (ftKB)		Act Btm, MD (ftKB)	
Surface			12 1/4			13		787	
Production			7 7/8			787		7,282	
Casing Strings									
Csg Des			Run Date		OD (in)	Wt/Len (lb/ft)	Grade	Top, MD (ftKB)	MD (ftKB)
Surface			12/17/2007		8 5/8	24.00	J-55	13.0	778.0
Production			12/20/2007		4 1/2	11.60	J-55	13.0	7,275.0
Cement									
Des					Start Date		Top (ftKB)		Btm (ftKB)
Surface Casing Cement					12/17/2007		13.0		778.0
Production Casing Cement					12/20/2007		2,995.0		7,275.0
DUMP BAIL 2 SKS CMT, SPN WL					10/11/2019		7,044.0		7,070.0
PA Plug 185 SKS CMT					10/24/2019		2,000.0		2,500.0
PA Plug 315 SKS CMT					10/25/2019		13.0		978.0
Zone Statuses									
Zone Name		Status Date	Status	Fluid Type	Job			Prod Method	
CODELL		10/11/2019	TA		PLUG AND ABANDON, 10/9/2019 07:00				
CODELL		10/24/2019	P&A		PLUG AND ABANDON, 10/9/2019 07:00				
Perforation Data									
Linked Zone			Bnch/Stg	Entered Shot Total	Top (ftKB)		Btm (ftKB)		Date
CODELL, ORIGINAL HOLE				1	978.00		978.00		10/24/2019
				6	2,500.00		2,500.00		1/1/2019
				56	7,120.00		7,134.00		1/14/2008
Stimulation Intervals									
Zone				Start Date		Top (ftKB)		Btm (ftKB)	
CODELL, ORIGINAL HOLE				1/23/2008		7,120.0		7,134.0	
Other In Hole									
Run Date		Des			Make		OD (in)	Top (ftKB)	Btm (ftKB)
10/11/2019		Cast Iron Bridge Plug w/ 2 SX Cement					4	7,044.0	7,072.0
10/24/2019		Cast Iron Bridge Plug w/ 2 SX Cement					4	6,746.0	6,774.0
Logs									
Date		Type				Top, MD (ftKB)		Btm, MD (ftKB)	
1/11/2008		CBL/CCL/GR				2,850.0		7,220.0	
Plug Back Total Depths									
Date		Type			Com				Depth (ftKB)
12/20/2007		FLOAT COLLAR							7,258.0