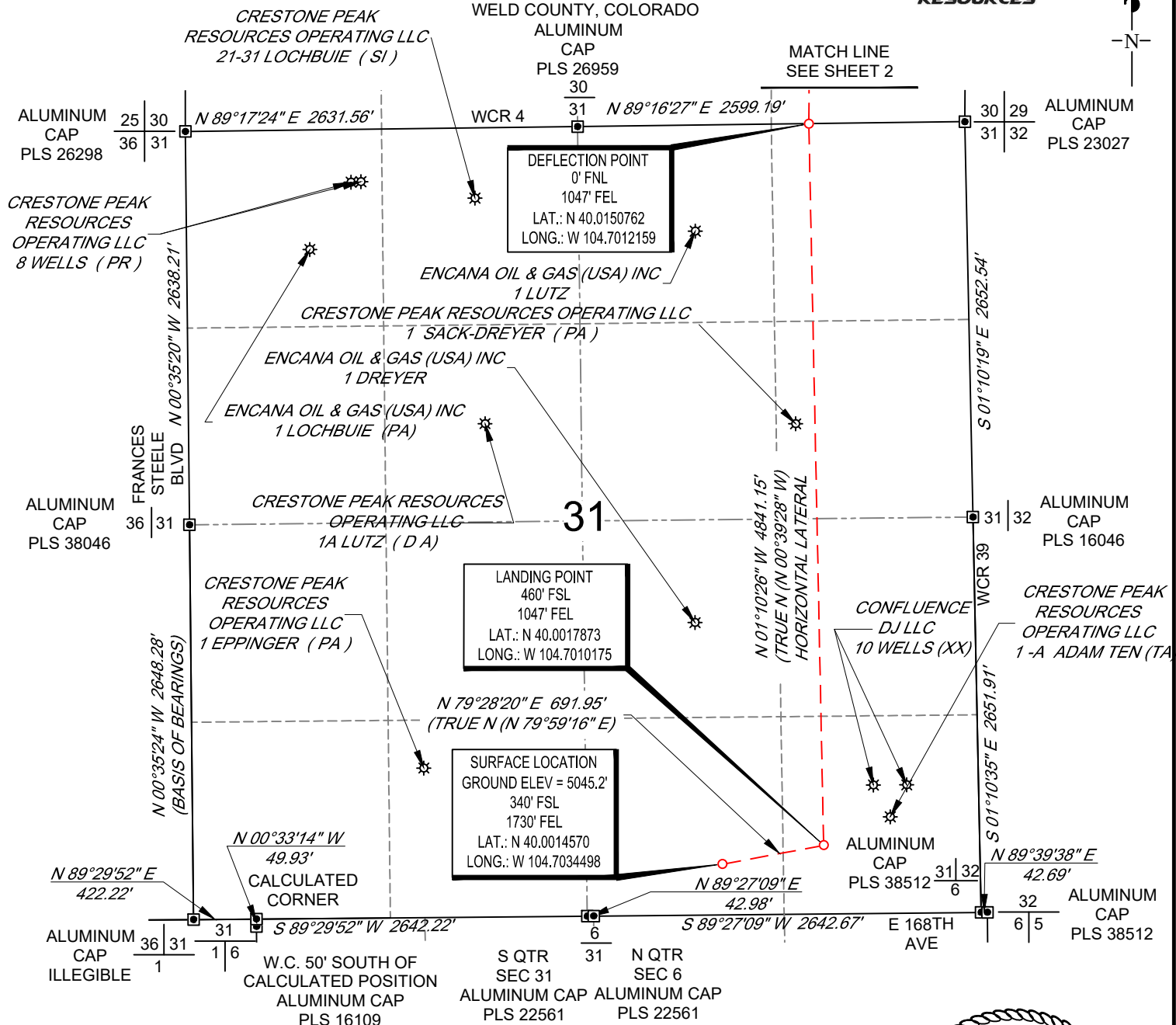


SCALE: 1" = 1000'

0' 500' 1000'

WELL LOCATION MAP

SHL SW/4 SE/4, SECTION 31, TOWNSHIP 1-N, RANGE 65-W
 LPL SE/4 SE/4, SECTION 31, TOWNSHIP 1-N, RANGE 65-W
 DP NE/4 NE/4, SECTION 31, TOWNSHIP 1-N, RANGE 65-W
 BHL NE/4 NE/4, SECTION 30, TOWNSHIP 1-N, RANGE 65-W
 WELD COUNTY, COLORADO



NOTES

1. Horizontal (NAD 83) and vertical (NAVD 88) datum is based on the Trimble VRS Network or OPUS Solution.
2. All directions, distances, and dimensions shown hereon are based on coordinates from the "Colorado coordinate system of 1983 north zone" (article 52 of title 38, C.R.S.).
3. All section line dimensions shown hereon are based on field measurements of existing monuments and/or physical evidence found in the field unless otherwise indicated.
4. Physical features shown hereon are for graphical representation only.
5. See Form 2A, if applicable for visible improvements within 500' of wellhead.
6. Distances to nearest section lines are measured perpendicularly.
7. This is not a land survey nor land survey plat.

PDOP Reading: 1.5 Instrument Operator: **Eric Purcell**
 Date Surveyed: **07/10/2018**



SURVEYOR'S STATEMENT

The undersigned hereby states that the well location shown hereon was staked on the ground based on existing monumentation and/or physical evidence found in the field and is correct to the best of my knowledge, information and belief.

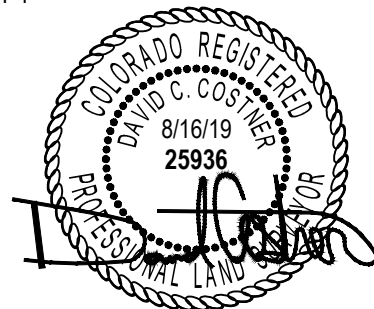
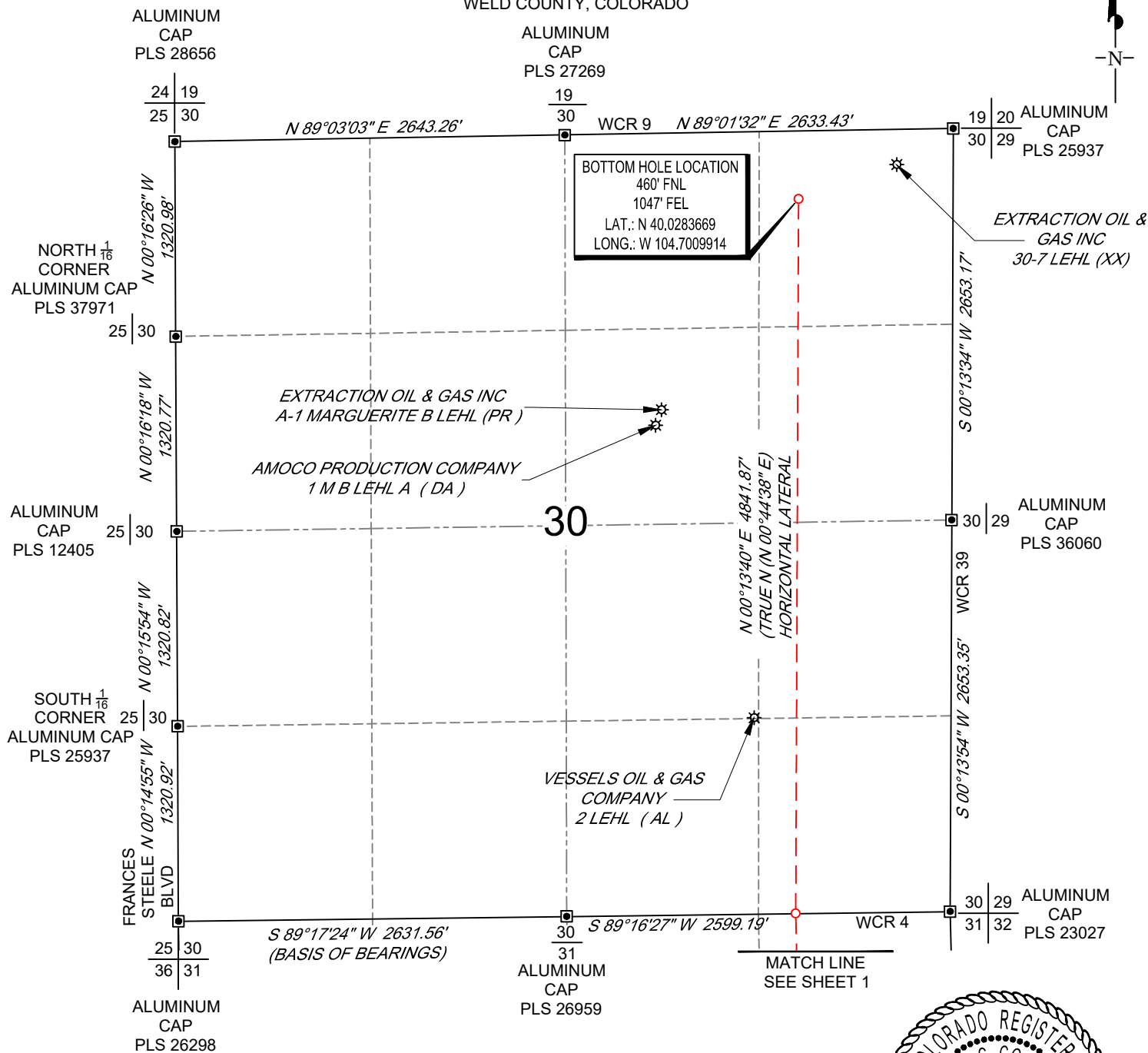


VERDAD RESOURCES COUNTYLINE 3130-04H JOB NO. 118679	JLS	07/12/2018	REVISION:	
	SHEET :	1 OF 2	MAPP	08/16/2019
	FILE:	LO_COUNTYLINE_3130_04H_REV2		

SCALE: 1" = 1000'
0' 500' 1000'

BOTTOM HOLE MAP

SHL SW/4 SE/4, SECTION 31, TOWNSHIP 1-N, RANGE 65-W
LPL SE/4 SE/4, SECTION 31, TOWNSHIP 1-N, RANGE 65-W
DP NE/4 NE/4, SECTION 31, TOWNSHIP 1-N, RANGE 65-W
BHL NE/4 NE/4, SECTION 30, TOWNSHIP 1-N, RANGE 65-W
WELD COUNTY, COLORADO



VERDAD RESOURCES
COUNTYLINE 3130-04H
JOB NO. 118679

JLS	07/12/2018	REVISION:	
SHEET :	2 OF 2	MAPP	08/16/2019
FILE:	LO_COUNTYLINE_3130_04H_REV2		

