



410 17th Street, Suite 1400  
Denver, CO 80202  
(720) 440-6100 phone  
(720) 305-0804 fax

[Bonanzacrk.com](http://Bonanzacrk.com)

April 28, 2020

State of Colorado  
Oil and Gas Conservation Commission  
1120 Lincoln Street, Suite 801  
Denver, CO 80203

**RE: Proposed Wellbore Spacing Unit**  
STATE ANTELOPE J14-31-30XRLNC  
Niobrara New Drill  
SWSE Section 31, Township 5N, Range 62W, 6<sup>th</sup> PM  
Weld County, Colorado

Dear Director Robbins,

Bonanza Creek Energy Operating Company, LLC. ("Bonanza Creek") is planning to drill the above captioned well in accordance with the provisions of Colorado Oil and Gas Conservation Commission (COGCC) Rule 318A.e.

Bonanza Creek's proposed wellbore spacing unit consists of:

Township 4N, Range 62W (Weld County):  
Section 6: N2 Lot 3, Lot 2

Township 5N, Range 62W (Weld County):  
Section 31: W2  
Section 30: W2

Total acres: 731.2ac

Bonanza Creek is the only working interest owner within the proposed wellbore spacing unit, therefore Bonanza Creek hereby attest that no notice letters are required under COGCC Rule 318Ae.(5). The map illustrating the proposed wellbore spacing unit is provided to assist you in your review and approval of Bonanza Creek's proposed APD for the above mentioned well.

Thank you for your attention to the enclosed. Bonanza Creek respectfully requests that the COGCC review the enclosed information and approve the Application for Permit to Drill the captioned well.

Regards,  
Bonanza Creek Energy Operating Company, LLC.

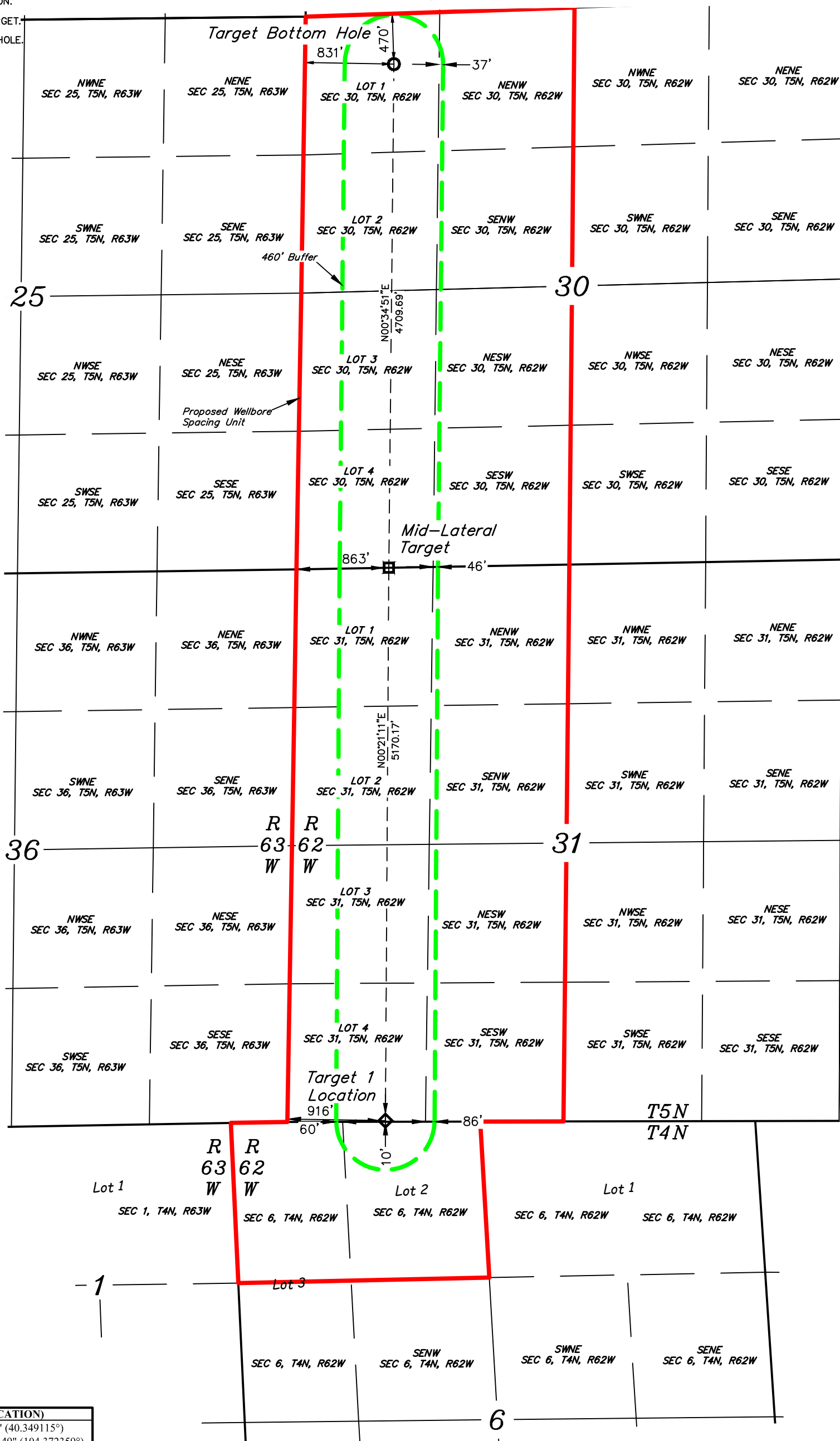
Kate Miller  
Regulatory Specialist

LEGEND:

- ◆ = TARGET 1 LOCATION.  
□ = MID-LATERAL TARGET.  
○ = TARGET BOTTOM HOLE.

NOTE:  
Distances referenced  
on plat to section lines  
are perpendicular.

T5N, R62W, 6th P.M.



NAD 83 (TARGET 1 LOCATION)	
LATITUDE = 40°20'56.81" (40.349115°)	
LONGITUDE = 104°22'20.49" (104.372359°)	
STATE PLANE NAD 83 (CO. NORTH)	
N: 1372021.60' E: 3314286.86'	
NAD 83 (MID-LATERAL TARGET)	
LATITUDE = 40°21'47.89" (40.363302°)	
LONGITUDE = 104°22'19.60" (104.372112°)	
STATE PLANE NAD 83 (CO. NORTH)	
N: 1377190.20' E: 3314290.15'	

NAD 83 (TARGET BOTTOM HOLE)	
LATITUDE = 40°22'34.41" (40.376224°)	
LONGITUDE = 104°22'18.56" (104.371822°)	
STATE PLANE NAD 83 (CO. NORTH)	
N: 1381898.39' E: 3314310.90'	



REV: 1 09-09-19 C.IVIE (QTR QTR CHANGE)

BASIS OF BEARINGS  
TRANSVERSE MERCATOR PROJECTION WITH  
A CENTRAL MERIDIAN OF W105°00'00".



BONANZA CREEK ENERGY  
OPERATING COMPANY, LLC

STATE ANTELOPE  
J14-31-30XRLNC  
SECTION 31, T5N, R62W, 6th P.M.  
WELD COUNTY, COLORADO

SURVEYED BY	RYAN WILLIAMS, Z.R.	07-16-18	SCALE
DRAWN BY	T.A.	05-29-19	1" = 1000'

WELL SPACING PLAT



UELS, LLC  
Corporate Office \* 85 South 200 East  
Vernal, UT 84078 \* (435) 789-1017