



410 17th Street, Suite 1400
Denver, CO 80202
(720) 440-6100 phone
(720) 305-0804 fax

BonanzaCrk.com

April 28, 2020

State of Colorado
Oil and Gas Conservation Commission
1120 Lincoln Street, Suite 801
Denver, CO 80203

RE: Proposed Wellbore Spacing Unit
STATE ANTELOPE E14-31-30XRLNB
Niobrara New Drill
SWSE Section 31, Township 5N, Range 62W, 6th PM
Weld County, Colorado

Dear Director Robbins,

Bonanza Creek Energy Operating Company, LLC. ("Bonanza Creek") is planning to drill the above captioned well in accordance with the provisions of Colorado Oil and Gas Conservation Commission (COGCC) Rule 318A.e.

Bonanza Creek's proposed wellbore spacing unit consists of:

Township 4N, Range 62W (Weld County):
Section 6: N2NW (Lot 3, Lot 2)
Township 5N, Range 62W
Section 31: W2W2 (Lot 1- Lot 4)
Section 30: W2W2 (Lot 1- Lot4)
Township 5N, Range 63W
Section 25: E2E2
Section 36: E2E2

Total acres: 720.75 ac

The 30 day notification time period has passed and we have not yet received any objections to such well locations or proposed spacing unit, therefore Bonanza Creek hereby requests the Director to approve the above mentioned well. Bonanza Creek respectfully requests the COGCC review the enclosed map illustrating the proposed wellbore spacing unit.

Regards,
Bonanza Creek Energy Operating Company, LLC.

A handwritten signature in black ink that reads 'Kate Miller'. The signature is fluid and cursive, with the first name 'Kate' being more prominent than the last name 'Miller'.

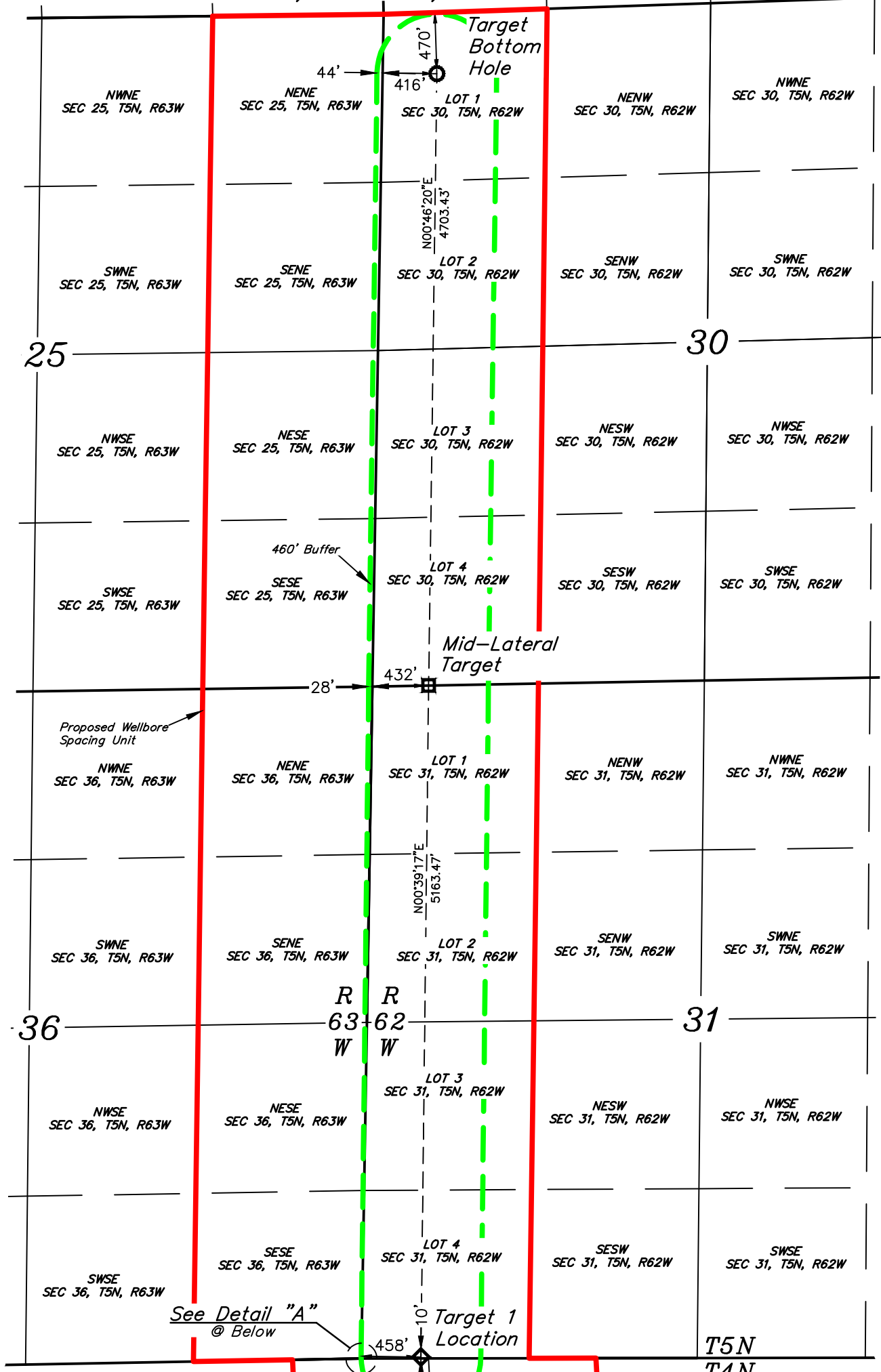
Kate Miller
Regulatory Specialist

LEGEND:

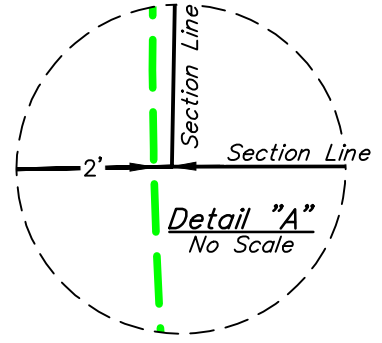
- ◆ = TARGET 1 LOCATION.
- ◻ = MID-LATERAL TARGET.
- = TARGET BOTTOM HOLE.

NOTE:
Distances referenced on plat to section lines are perpendicular.

T5N, R62W, 6th P.M.



See Detail "A" @ Below



NAD 83 (TARGET 1 LOCATION)	
LATITUDE = 40°20'56.84" (40.349122°)	
LONGITUDE = 104°22'26.41" (104.374002°)	
STATE PLANE NAD 83 (CO. NORTH)	
N: 1372018.30' E: 3313828.93'	

NAD 83 (MID-LATERAL TARGET)		NAD 83 (TARGET BOTTOM HOLE)	
LATITUDE = 40°21'47.84" (40.363289°)		LATITUDE = 40°22'34.30" (40.376194°)	
LONGITUDE = 104°22'25.17" (104.373659°)		LONGITUDE = 104°22'23.93" (104.373313°)	
STATE PLANE NAD 83 (CO. NORTH)		STATE PLANE NAD 83 (CO. NORTH)	
N: 1377180.12' E: 3313859.14'		N: 1381881.96' E: 3313895.82'	



REV: 1 09-09-19 C.IVIE (QTR QTR CHANGE)

BASIS OF BEARINGS
TRANSVERSE MERCATOR PROJECTION WITH A CENTRAL MERIDIAN OF W105°00'00".



BONANZA CREEK ENERGY OPERATING COMPANY, LLC

STATE ANTELOPE
E14-31-30XRLNB
SECTION 31, T5N, R62W, 6th P.M.
WELD COUNTY, COLORADO

SURVEYED BY	RYAN WILLIAMS, Z.R.	07-16-18	SCALE
DRAWN BY	T.A.	05-29-19	1" = 1000'

WELL SPACING PLAT



UELS, LLC
Corporate Office * 85 South 200 East
Vernal, UT 84078 * (435) 789-1017