



410 17th Street, Suite 1400  
Denver, CO 80202  
(720) 440-6100 phone  
(720) 305-0804 fax

[Bonanza creek.com](http://Bonanza creek.com)

April 28, 2020

State of Colorado  
Oil and Gas Conservation Commission  
1120 Lincoln Street, Suite 801  
Denver, CO 80203

**RE: Proposed Wellbore Spacing Unit**  
STATE SEVENTY HOLES U41-Y44-6HNC  
Niobrara New Drill  
SWSE Section 31, Township 5N, Range 62W, 6<sup>th</sup> PM  
Weld County, Colorado

Dear Director Robbins,

Bonanza Creek Energy Operating Company, LLC. ("Bonanza Creek") is planning to drill the above captioned well in accordance with the provisions of Colorado Oil and Gas Conservation Commission (COGCC) Rule 318A.e.

Bonanza Creek's proposed wellbore spacing unit consists of:

Township 4N, Range 62W (Weld County):  
Section 5: W2 of Lot 2, SWNW, S2SW  
Section 6: E2 of Lot 1, SENE, E2SE  
Section 7: NENE  
Section 8: NWNW

Total acres: 411.35ac

The 30 day notification time period has passed and we have not yet received any objections to such well locations or proposed spacing unit, therefore Bonanza Creek hereby requests the Director to approve the above mentioned well. Bonanza Creek respectfully requests the COGCC review the enclosed map illustrating the proposed wellbore spacing unit.

Regards,  
Bonanza Creek Energy Operating Company, LLC.

A handwritten signature in black ink, appearing to read 'Kate Miller', is written in a cursive style.

Kate Miller  
Regulatory Specialist

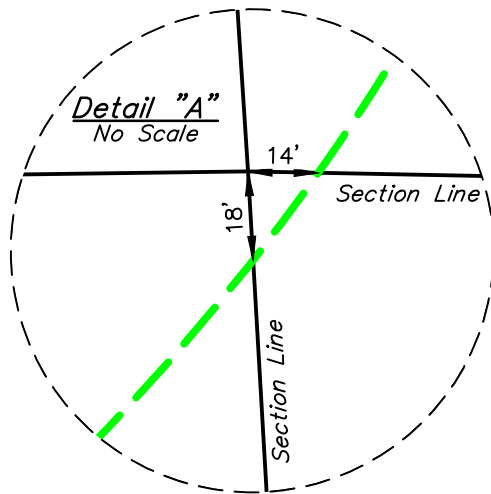
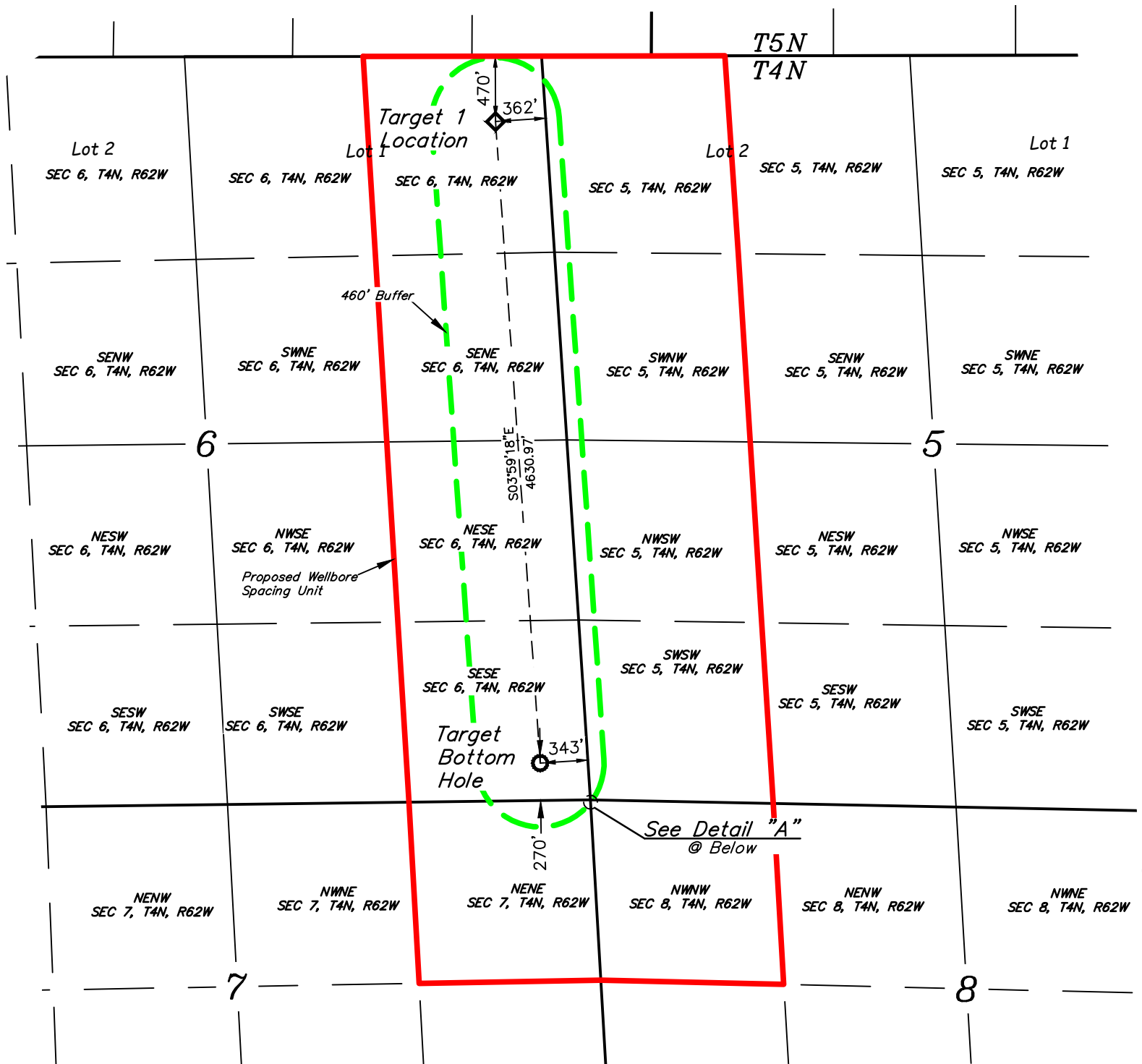
# T5N, R62W, 6th P.M.

**LEGEND:**

- ◆ = TARGET 1 LOCATION.
- = MID-LATERAL TARGET.
- = TARGET BOTTOM HOLE.

**NOTE:**

Distances referenced on plat to section lines are perpendicular.



<b>NAD 83 (TARGET 1 LOCATION)</b>	
LATITUDE = 40°20'51.90" (40.347751°)	
LONGITUDE = 104°21'40.17" (104.361159°)	
<b>STATE PLANE NAD 83 (CO. NORTH)</b>	
N: 1371564.64' E: 3317414.67'	
<b>NAD 83 (TARGET BOTTOM HOLE)</b>	
LATITUDE = 40°20'06.24" (40.335067°)	
LONGITUDE = 104°21'36.45" (104.360124°)	
<b>STATE PLANE NAD 83 (CO. NORTH)</b>	
N: 1366948.19' E: 3317762.65'	



REV: 1 09-09-19 C.IVIE (QTR QTR CHANGE)

**BASIS OF BEARINGS**  
TRANSVERSE MERCATOR PROJECTION WITH  
A CENTRAL MERIDIAN OF W105°00'00".



**BONANZA CREEK ENERGY  
OPERATING COMPANY, LLC**

STATE SEVENTY HOLES  
U41-Y44-6HNC  
SECTION 31, T5N, R62W, 6th P.M.  
WELD COUNTY, COLORADO

SURVEYED BY	RYAN WILLIAMS, Z.R.	07-16-18	SCALE
DRAWN BY	T.A	05-29-19	1" = 1000'

**WELL SPACING PLAT**



**UELS, LLC**  
Corporate Office \* 85 South 200 East  
Vernal, UT 84078 \* (435) 789-1017