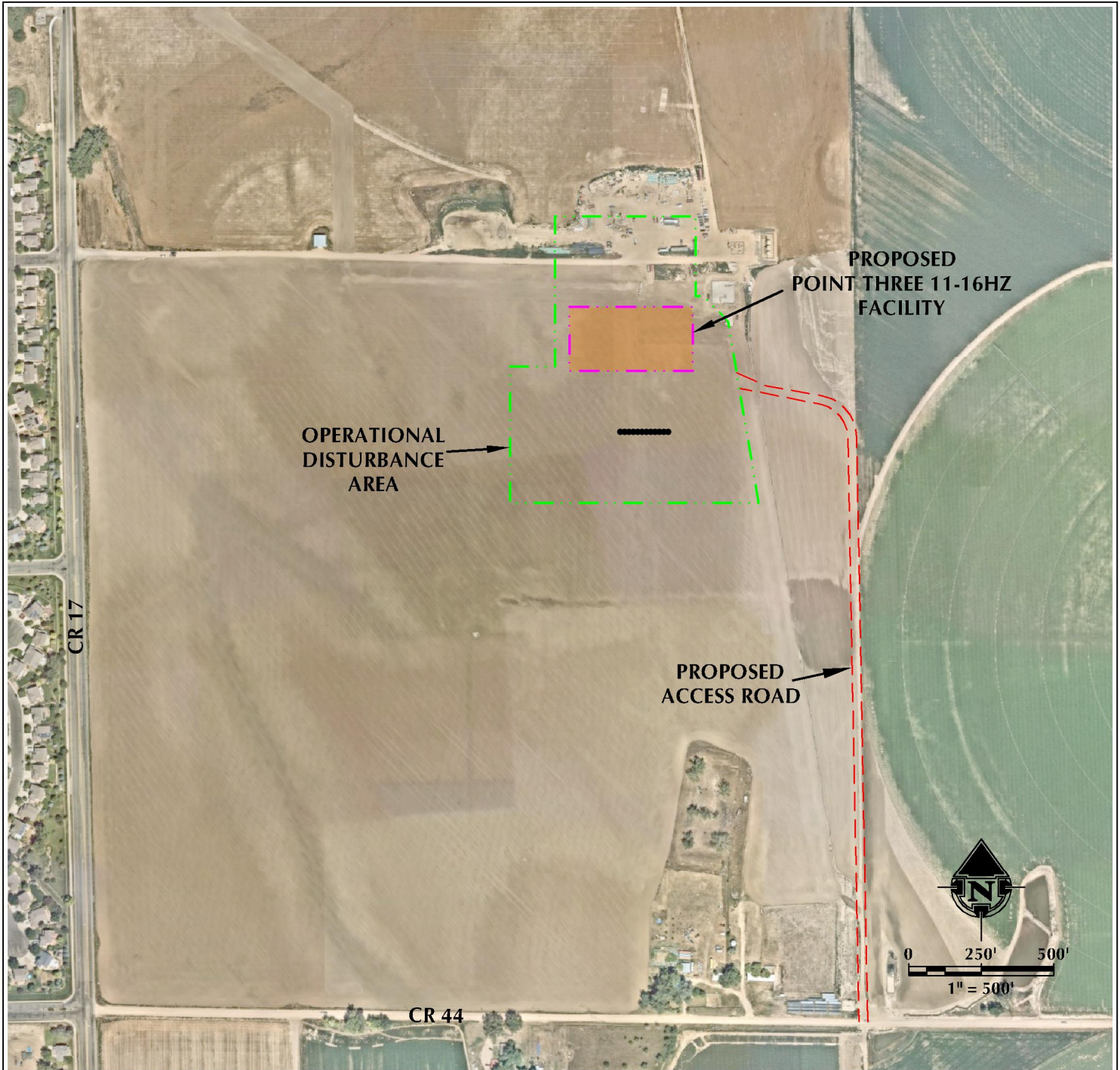


POINT THREE 11-16HZ ACCESS MAP

SE1/4 NW1/4 & NE1/4 SW1/4 SECTION 16, TOWNSHIP 4 NORTH, RANGE 67 WEST, 6TH P.M.



LEGEND

- PROPOSED WELL
- ACCESS
- PROPOSED FACILITY
- DISTURBANCE AREA

INTERSECTION OF
ACCESS ROAD AND CR 44
LATITUDE: 40.305536°
LONGITUDE: -104.896099°



609 CONSULTING, LLC
LOVELAND OFFICE
6706 North Franklin Avenue
Loveland, Colorado 80538
Phone: 970-776-4331

SHERIDAN OFFICE
1095 Saberton Avenue
Sheridan, Wyoming 82801
Phone: 307-674-0609

DATE SURVEYED: 1/8/2020
DATE: 1/22/2020
DRAFTER: GLK
REVISED: 4/28/2020

DATA SOURCES:
- AERIAL COURTESY OF ESRI, INC.

PREPARED FOR:
Kerr-McGee Oil & Gas Onshore L.P.