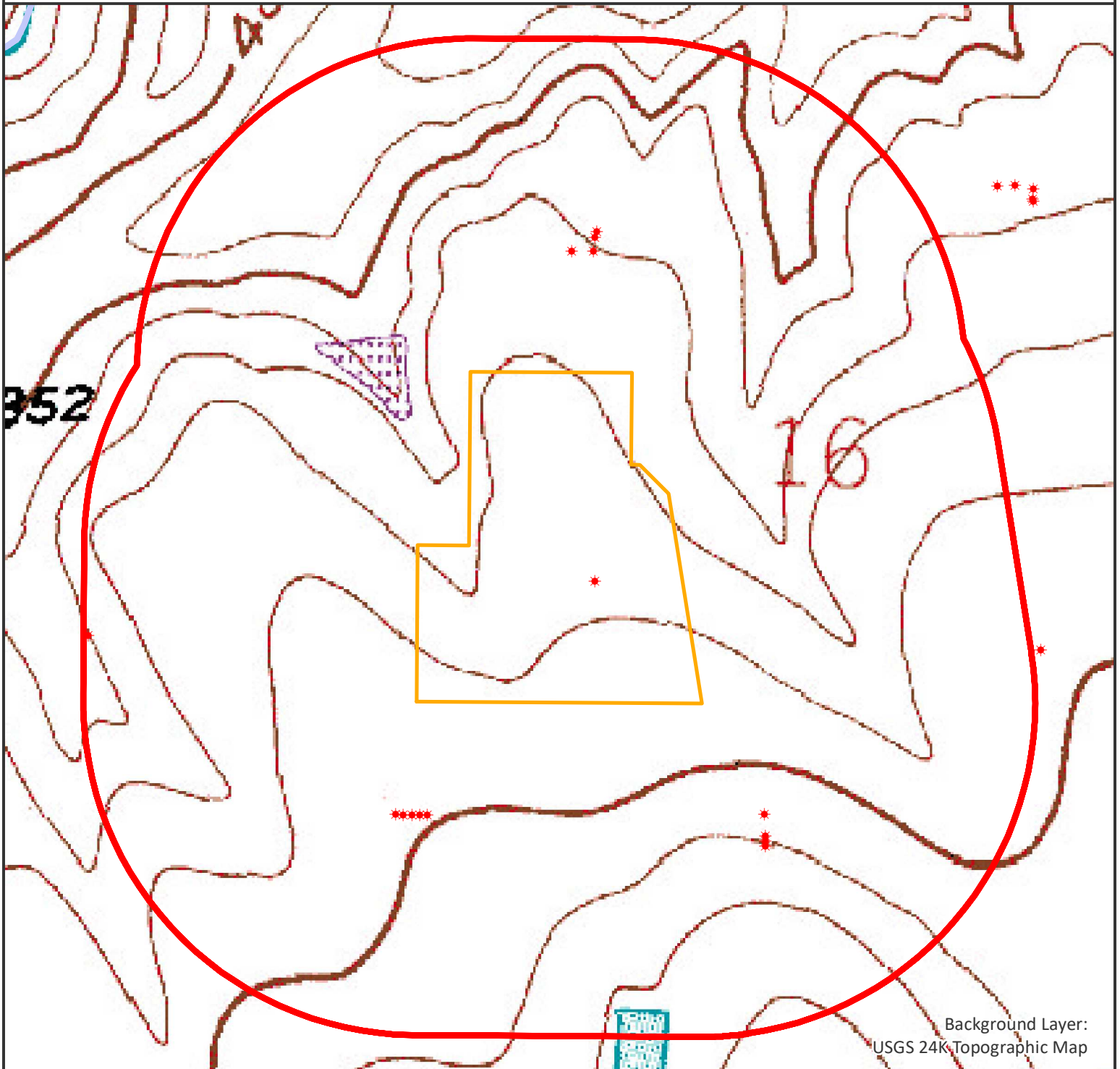


# HYDROLOGY MAP POINT THREE 11-16HZ



Background Layer:  
USGS 24K Topographic Map




## Nearest Surface Water Features

Pond (Dry): 170' W Elev: 4869'  
Pond (Dry): 912' S Elev: 4924'

Loc Elev: 4889'

All measurements are made from  
edge of disturbed area.

## Legend

- \* EXISTING OIL/GAS WELL (COGCC)
-  1000' BUFFER
-  MAN-MADE DITCH
-  WELL PAD (PROPOSED)



Date created: 5/27/2020  
Created by: APC Regulatory GIS  
Scale: 1:5,000  
Projection: NAD83 UTM 13N  
Contour Interval: 10 feet