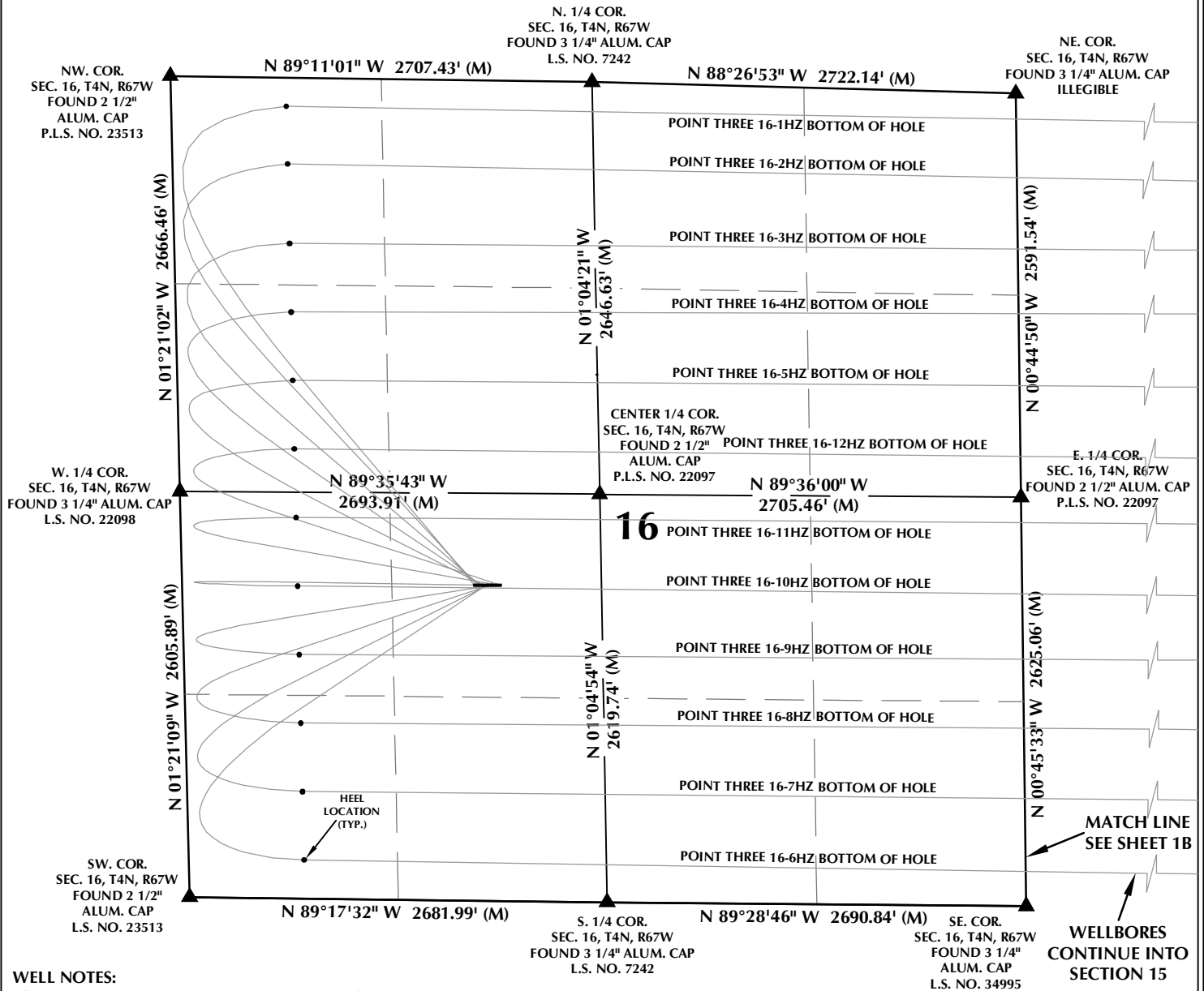


# MULTI-WELL PLAN SECTION 16, T4N, R67W



## WELL NOTES:

POINT THREE 16-1HZ  
SURFACE: 2025' FSL, 1876' FWL, SEC. 16  
BOTTOM HOLE: 187' FNL, 470' FEL, SEC. 15

POINT THREE 16-2HZ  
SURFACE: 2025' FSL, 1891' FWL, SEC. 16  
BOTTOM HOLE: 567' FNL, 470' FEL, SEC. 15

POINT THREE 16-3HZ  
SURFACE: 2025' FSL, 1906' FWL, SEC. 16  
BOTTOM HOLE: 971' FNL, 470' FEL, SEC. 15

POINT THREE 16-4HZ  
SURFACE: 2025' FSL, 1921' FWL, SEC. 16  
BOTTOM HOLE: 1362' FNL, 471' FEL, SEC. 15

POINT THREE 16-5HZ  
SURFACE: 2026' FSL, 1936' FWL, SEC. 16  
BOTTOM HOLE: 1850' FNL, 470' FEL, SEC. 15

POINT THREE 16-6HZ  
SURFACE: 2026' FSL, 1951' FWL, SEC. 16  
BOTTOM HOLE: 252' FSL, 470' FEL, SEC. 14

POINT THREE 16-7HZ  
SURFACE: 2026' FSL, 1966' FWL, SEC. 16  
BOTTOM HOLE: 784' FSL, 470' FEL, SEC. 14

POINT THREE 16-8HZ  
SURFACE: 2026' FSL, 1981' FWL, SEC. 16  
BOTTOM HOLE: 1257' FSL, 470' FEL, SEC. 14

POINT THREE 16-9HZ  
SURFACE: 2026' FSL, 1996' FWL, SEC. 16  
BOTTOM HOLE: 1709' FSL, 471' FEL, SEC. 14

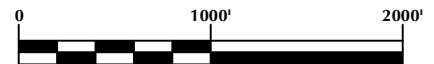
POINT THREE 16-10HZ  
SURFACE: 2026' FSL, 2011' FWL, SEC. 16  
BOTTOM HOLE: 2087' FSL, 470' FEL, SEC. 14

POINT THREE 16-11HZ  
SURFACE: 2027' FSL, 2026' FWL, SEC. 16  
BOTTOM HOLE: 2576' FSL, 470' FEL, SEC. 14

POINT THREE 16-12HZ  
SURFACE: 2027' FSL, 2041' FWL, SEC. 16  
BOTTOM HOLE: 2315' FNL, 470' FEL, SEC. 15

## NOTES:

- ▲ INDICATES SECTION CORNER.
- INDICATES CALCULATED CORNER.
- BASIS OF BEARING DERIVED FROM COLORADO COORDINATE SYSTEM OF 1983 NORTH ZONE.
- ALL MEASURED DISTANCES ARE GRID.
- COMBINED SCALE FACTOR: .99972777 CALCULATED FROM THE NE CORNER OF SECTION 16, T4N, R67W.
- WELL FOOTAGES ARE MEASURED AT RIGHT ANGLES TO THE SECTION LINES.



## WELL PAD - POINT THREE 11-16HZ

### MULTI-WELL PLAN

POINT THREE 16-1HZ, POINT THREE 16-2HZ,  
POINT THREE 16-3HZ, POINT THREE 16-4HZ,  
POINT THREE 16-5HZ, POINT THREE 16-6HZ,  
POINT THREE 16-7HZ, POINT THREE 16-8HZ,  
POINT THREE 16-9HZ, POINT THREE 16-10HZ,  
POINT THREE 16-11HZ & POINT THREE 16-12HZ  
LOCATED IN SECTIONS 14, 15 & 16, T4N, R67W, 6TH P.M.  
WELD COUNTY, COLORADO

**Kerr-McGee Oil &  
Gas Onshore L.P.**

1099 18th Street  
Denver, Colorado 80202



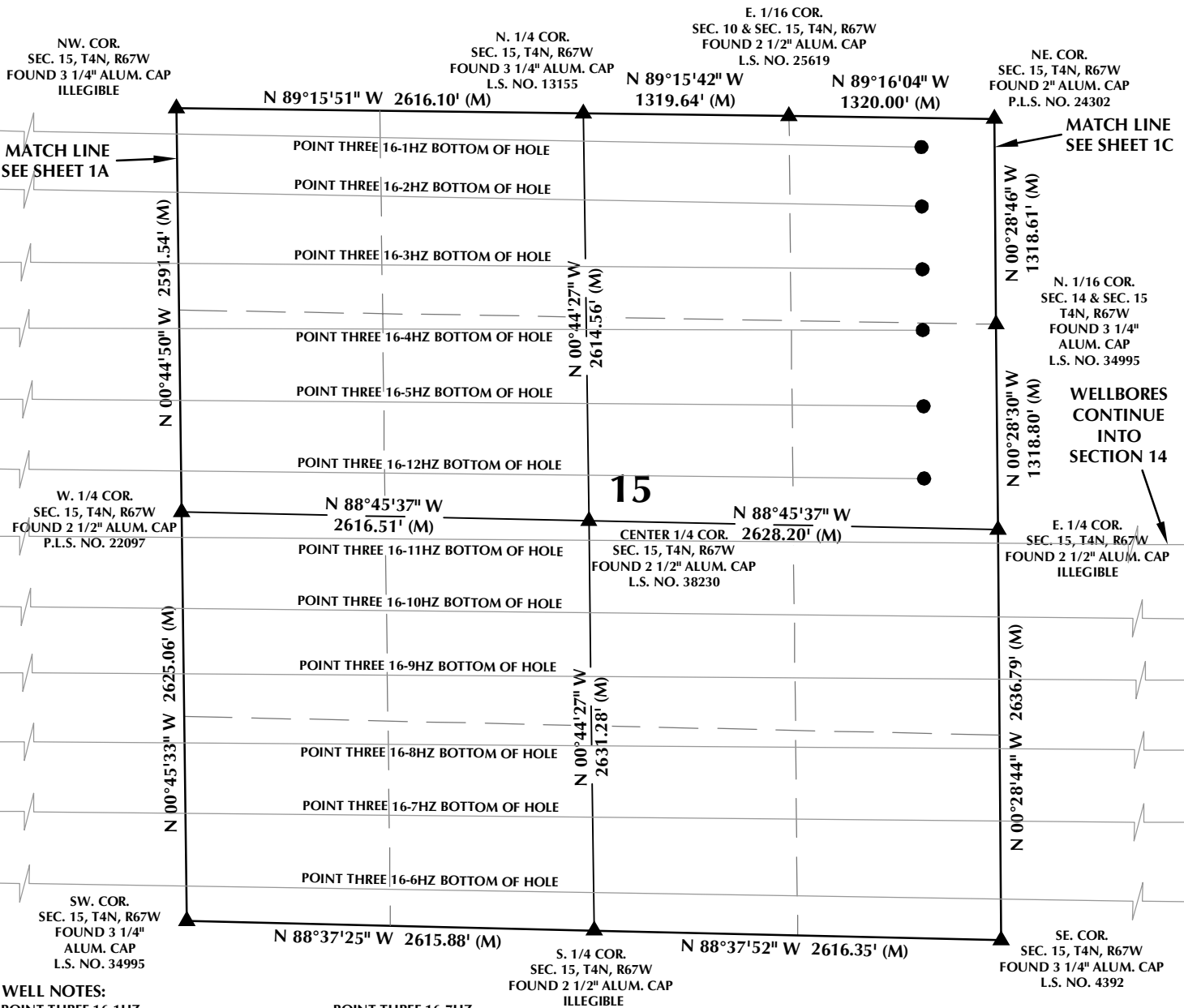
## CONSULTING, LLC

SHERIDAN OFFICE  
1095 Saberton Avenue  
Sheridan, Wyoming 82801  
Phone 307-674-0609

LOVELAND OFFICE  
6706 North Franklin Avenue  
Loveland, Colorado 80538  
Phone 970-776-4331

DRAFTED BY:	LMO	CHECKED BY:	RKF	SHEET NO:
DATE DRAFTED:	2/19/19	DATE SURVEYED:	1/8/2020	1A
REVISED:	2/17/2020	FILE NAME:	17-174	1A OF 1

# MULTI-WELL PLAN SECTION 15, T4N, R67W



## WELL NOTES:

POINT THREE 16-1HZ  
SURFACE: 2025' FSL, 1876' FWL, SEC. 16  
BOTTOM HOLE: 187' FNL, 470' FEL, SEC. 15

POINT THREE 16-2HZ  
SURFACE: 2025' FSL, 1891' FWL, SEC. 16  
BOTTOM HOLE: 567' FNL, 470' FEL, SEC. 15

POINT THREE 16-3HZ  
SURFACE: 2025' FSL, 1906' FWL, SEC. 16  
BOTTOM HOLE: 971' FNL, 470' FEL, SEC. 15

POINT THREE 16-4HZ  
SURFACE: 2025' FSL, 1921' FWL, SEC. 16  
BOTTOM HOLE: 1362' FNL, 471' FEL, SEC. 15

POINT THREE 16-5HZ  
SURFACE: 2026' FSL, 1936' FWL, SEC. 16  
BOTTOM HOLE: 1850' FNL, 470' FEL, SEC. 15

POINT THREE 16-6HZ  
SURFACE: 2026' FSL, 1951' FWL, SEC. 16  
BOTTOM HOLE: 252' FSL, 470' FEL, SEC. 14

POINT THREE 16-7HZ  
SURFACE: 2026' FSL, 1966' FWL, SEC. 16  
BOTTOM HOLE: 784' FSL, 470' FEL, SEC. 14

POINT THREE 16-8HZ  
SURFACE: 2026' FSL, 1981' FWL, SEC. 16  
BOTTOM HOLE: 1257' FSL, 470' FEL, SEC. 14

POINT THREE 16-9HZ  
SURFACE: 2026' FSL, 1996' FWL, SEC. 16  
BOTTOM HOLE: 1709' FSL, 471' FEL, SEC. 14

POINT THREE 16-10HZ  
SURFACE: 2026' FSL, 2011' FWL, SEC. 16  
BOTTOM HOLE: 2087' FSL, 470' FEL, SEC. 14

POINT THREE 16-11HZ  
SURFACE: 2027' FSL, 2026' FWL, SEC. 16  
BOTTOM HOLE: 2576' FSL, 470' FEL, SEC. 14

POINT THREE 16-12HZ  
SURFACE: 2027' FSL, 2041' FWL, SEC. 16  
BOTTOM HOLE: 2315' FNL, 470' FEL, SEC. 15

## NOTES:

- ▲ INDICATES SECTION CORNER.
- INDICATES CALCULATED CORNER.
- BASIS OF BEARING DERIVED FROM COLORADO COORDINATE SYSTEM OF 1983 NORTH ZONE.
- ALL MEASURED DISTANCES ARE GRID.
- COMBINED SCALE FACTOR: .99972777 CALCULATED FROM THE NE CORNER OF SECTION 16, T4N, R67W.
- WELL FOOTAGES ARE MEASURED AT RIGHT ANGLES TO THE SECTION LINES.



## WELL PAD - POINT THREE 11-16HZ

### MULTI-WELL PLAN

POINT THREE 16-1HZ, POINT THREE 16-2HZ,  
POINT THREE 16-3HZ, POINT THREE 16-4HZ,  
POINT THREE 16-5HZ, POINT THREE 16-6HZ,  
POINT THREE 16-7HZ, POINT THREE 16-8HZ,  
POINT THREE 16-9HZ, POINT THREE 16-10HZ,  
POINT THREE 16-11HZ & POINT THREE 16-12HZ  
LOCATED IN SECTIONS 14, 15 & 16, T4N, R67W, 6TH P.M.  
WELD COUNTY, COLORADO

**Kerr-McGee Oil &  
Gas Onshore L.P.**

1099 18th Street  
Denver, Colorado 80202



## CONSULTING, LLC

SHERIDAN OFFICE  
1095 Saberton Avenue  
Sheridan, Wyoming 82801  
Phone 307-674-0609

LOVELAND OFFICE  
6706 North Franklin Avenue  
Loveland, Colorado 80538  
Phone 970-776-4331

DRAFTED BY: LMO

CHECKED BY: RKF

SHEET NO:

DATE DRAFTED: 2/17/2020

DATE SURVEYED: 1/8/2020

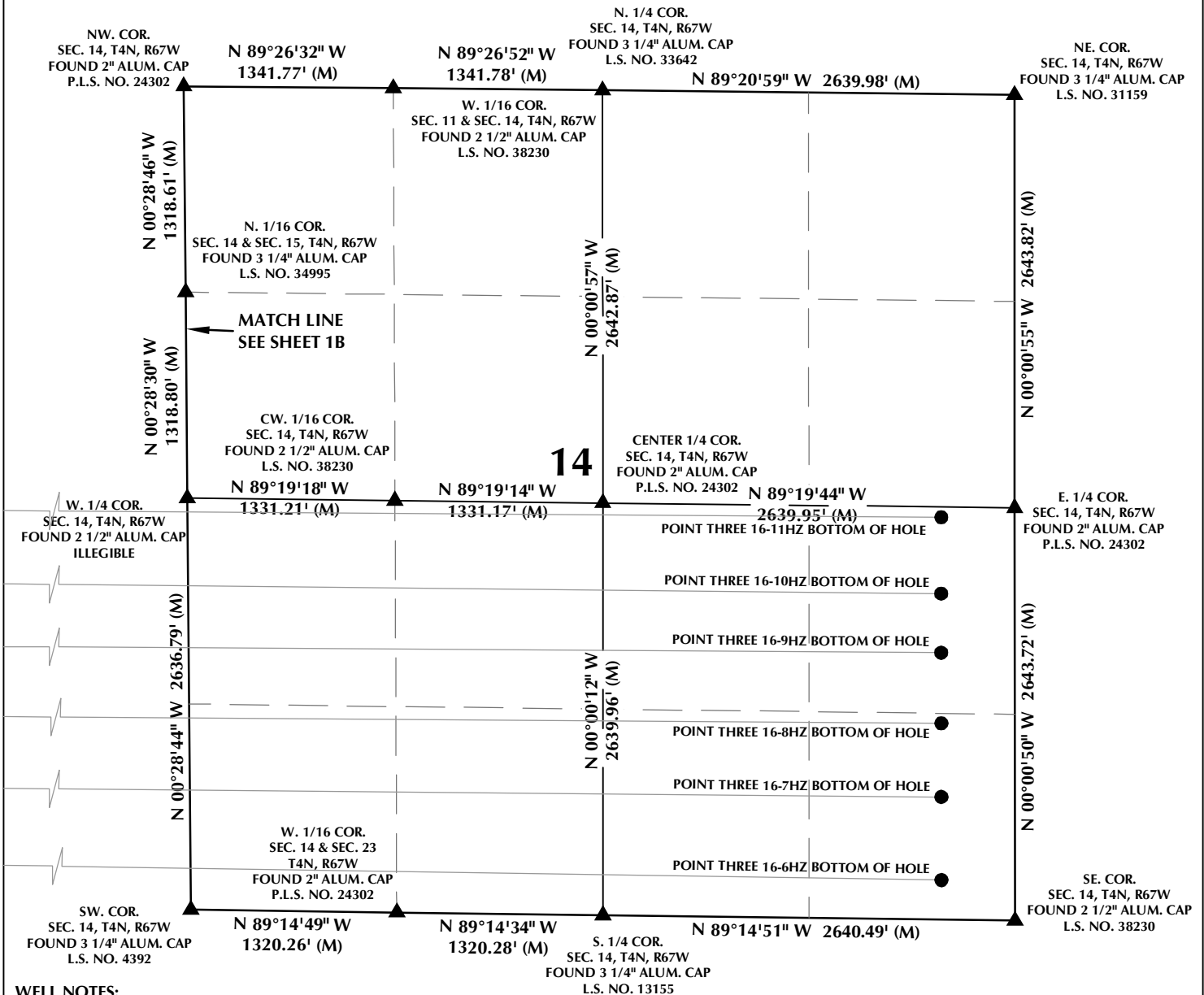
**1B**

REVISED:

FILE NAME: 17-174

1B OF 1

# MULTI-WELL PLAN SECTION 14, T4N, R67W



## WELL NOTES:

### POINT THREE 16-1HZ

SURFACE: 2025' FSL, 1876' FWL, SEC. 16  
BOTTOM HOLE: 187' FNL, 470' FEL, SEC. 15

### POINT THREE 16-2HZ

SURFACE: 2025' FSL, 1891' FWL, SEC. 16  
BOTTOM HOLE: 567' FNL, 470' FEL, SEC. 15

### POINT THREE 16-3HZ

SURFACE: 2025' FSL, 1906' FWL, SEC. 16  
BOTTOM HOLE: 971' FNL, 470' FEL, SEC. 15

### POINT THREE 16-4HZ

SURFACE: 2025' FSL, 1921' FWL, SEC. 16  
BOTTOM HOLE: 1362' FNL, 471' FEL, SEC. 15

### POINT THREE 16-5HZ

SURFACE: 2026' FSL, 1936' FWL, SEC. 16  
BOTTOM HOLE: 1850' FNL, 470' FEL, SEC. 15

### POINT THREE 16-6HZ

SURFACE: 2026' FSL, 1951' FWL, SEC. 16  
BOTTOM HOLE: 252' FSL, 470' FEL, SEC. 14

### POINT THREE 16-7HZ

SURFACE: 2026' FSL, 1966' FWL, SEC. 16  
BOTTOM HOLE: 784' FSL, 470' FEL, SEC. 14

### POINT THREE 16-8HZ

SURFACE: 2026' FSL, 1981' FWL, SEC. 16  
BOTTOM HOLE: 1257' FSL, 470' FEL, SEC. 14

### POINT THREE 16-9HZ

SURFACE: 2026' FSL, 1996' FWL, SEC. 16  
BOTTOM HOLE: 1709' FSL, 471' FEL, SEC. 14

### POINT THREE 16-10HZ

SURFACE: 2026' FSL, 2011' FWL, SEC. 16  
BOTTOM HOLE: 2087' FSL, 470' FEL, SEC. 14

### POINT THREE 16-11HZ

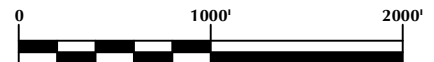
SURFACE: 2027' FSL, 2026' FWL, SEC. 16  
BOTTOM HOLE: 2576' FSL, 470' FEL, SEC. 14

### POINT THREE 16-12HZ

SURFACE: 2027' FSL, 2041' FWL, SEC. 16  
BOTTOM HOLE: 2315' FNL, 470' FEL, SEC. 15

## NOTES:

- ▲ INDICATES SECTION CORNER.
- INDICATES CALCULATED CORNER.
- BASIS OF BEARING DERIVED FROM COLORADO COORDINATE SYSTEM OF 1983 NORTH ZONE. ALL MEASURED DISTANCES ARE GRID.
- COMBINED SCALE FACTOR: .99972777 CALCULATED FROM THE NE CORNER OF SECTION 16, T4N, R67W.
- WELL FOOTAGES ARE MEASURED AT RIGHT ANGLES TO THE SECTION LINES.



## WELL PAD - POINT THREE 11-16HZ

### MULTI-WELL PLAN

POINT THREE 16-1HZ, POINT THREE 16-2HZ,  
POINT THREE 16-3HZ, POINT THREE 16-4HZ,  
POINT THREE 16-5HZ, POINT THREE 16-6HZ,  
POINT THREE 16-7HZ, POINT THREE 16-8HZ,  
POINT THREE 16-9HZ, POINT THREE 16-10HZ,  
POINT THREE 16-11HZ & POINT THREE 16-12HZ  
LOCATED IN SECTIONS 14, 15 & 16, T4N, R67W, 6TH P.M.  
WELD COUNTY, COLORADO

**Kerr-McGee Oil &  
Gas Onshore L.P.**

1099 18th Street  
Denver, Colorado 80202



## CONSULTING, LLC

SHERIDAN OFFICE  
1095 Saberton Avenue  
Sheridan, Wyoming 82801  
Phone 307-674-0609

LOVELAND OFFICE  
6706 North Franklin Avenue  
Loveland, Colorado 80538  
Phone 970-776-4331

DRAFTED BY: LMO

CHECKED BY: RKF

SHEET NO:

DATE DRAFTED: 2/17/2020

DATE SURVEYED: 1/8/2020

1C

REVISED:

FILE NAME: 17-174

1C OF 1