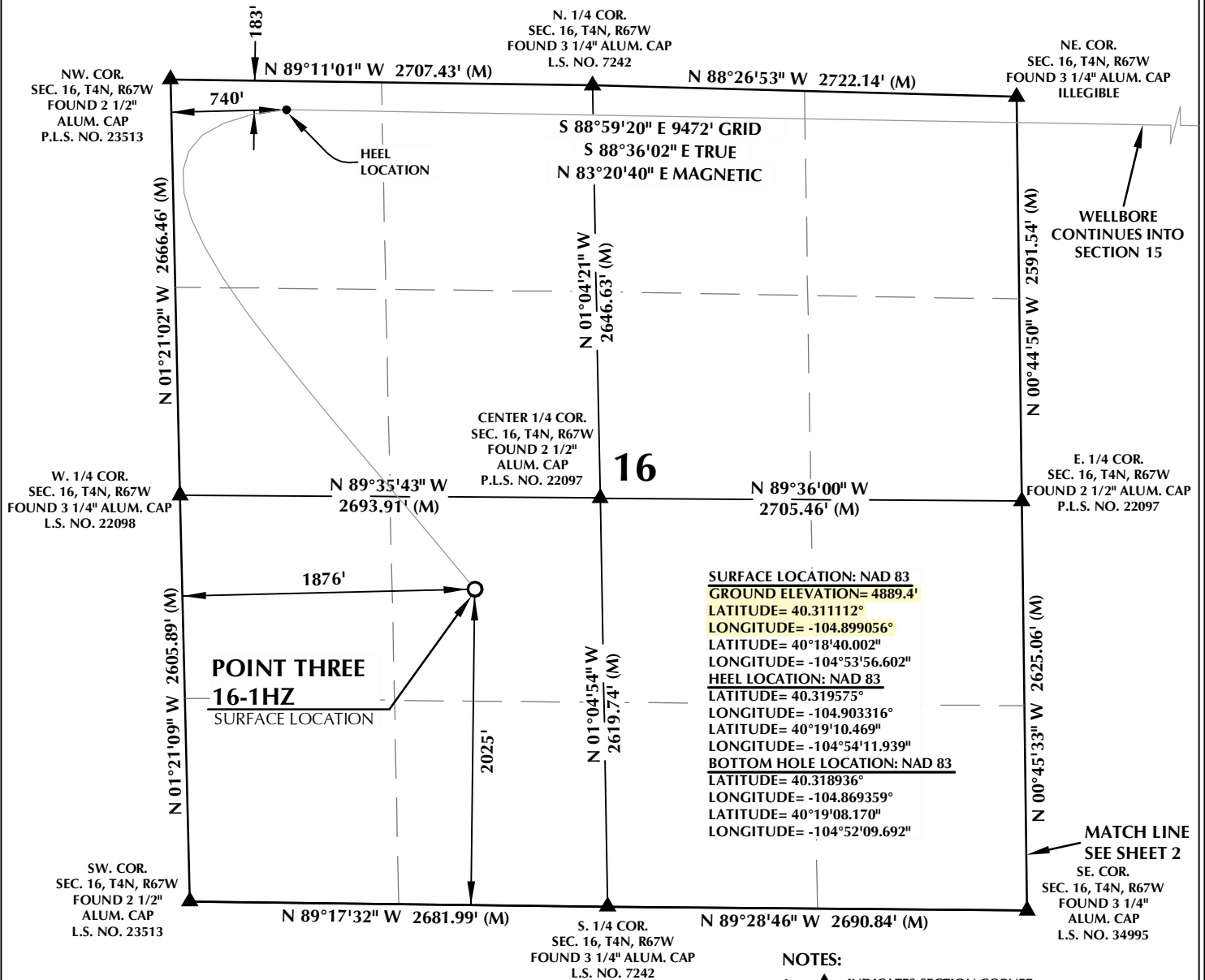


T4N, R67W



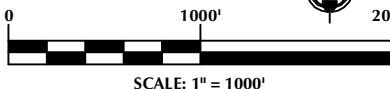
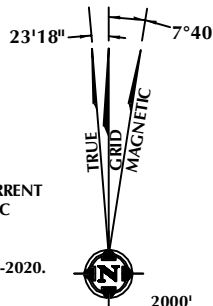
CERTIFICATE OF SURVEYOR:

THIS IS TO CERTIFY THAT THE ABOVE PLAT WAS PREPARED FROM FIELD NOTES OF ACTUAL SURVEY MADE BY ME OR UNDER MY SUPERVISION AND TO THE SAME OF TRUE AND CORRECT TO THE BEST OF MY KNOWLEDGE AND BELIEF. THIS CERTIFICATE DOES NOT REPRESENT A LAND SURVEY PLAT OR IMPROVEMENT SURVEY PLAT AS DEFINED BY C.S. 19-51-302 AND CANNOT BE RELIED UPON TO DETERMINE OWNERSHIP.

Randall K. French
 RANDALL K. FRENCH
 PROFESSIONAL LAND SURVEYOR
 COLORADO REGISTRATION NUMBER: 38512
 2/17/2020

NOTICE:
 ACCORDING TO COLORADO STATE LAW YOU MUST COMMENCE NO LEGAL ACTION BASED UPON ANY DEFECT IN THIS SURVEY WITHIN THREE YEARS AFTER YOU FIRST DISCOVER SUCH DEFECT. IN NO EVENT MAY ANY ACTION BASED UPON ANY DEFECT IN THIS SURVEY BE COMMENCED MORE THAN TEN YEARS FROM THE DATE ON THE CERTIFICATION SHOWN HEREON.

NOTE:
 MAGNETIC NORTH IS CURRENT AS OF 1/8/2020. MAGNETIC NORTH CHANGES WEST 0°06' PER YEAR. MAGNETIC MODEL: WMM-2020.



NOTES:

- ▲ INDICATES SECTION CORNER.
- INDICATES CALCULATED CORNER.
- DRAWING LATITUDE AND LONGITUDE COORDINATES ARE NAD 83 (2011)(EPOCH:2010).
- ELEVATION BASED ON NAVD88 (GEOID12B).
- BASIS OF BEARING DERIVED FROM COLORADO COORDINATE SYSTEM OF 1983 NORTH ZONE.
- ALL MEASURED DISTANCES ARE GRID.
- COMBINED SCALE FACTOR: .99972777 CALCULATED FROM THE NE CORNER OF SECTION 16, T4N, R67W.
- OPERATOR: RYAN GROVES / PDOP = 2.0.
- SEE ADDENDUM TO WELL LOCATION CERTIFICATE FOR EXISTING IMPROVEMENTS WITHIN 500' OF THE WELL PAD.
- WELL FOOTAGES ARE MEASURED AT RIGHT ANGLES TO THE SECTION LINES.
- THE BOTTOM OF HOLE BEARS S88°59'20"E, 9472' FROM THE HEEL LOCATION.

WELL PAD - POINT THREE 11-16HZ

POINT THREE 16-1HZ
 WELL LOCATION CERTIFICATE
 2025' FSL & 1876' FWL (NESW) (SURFACE)
 183' FNL & 740' FWL (NWNW) (HEEL)
 LOCATED IN SECTION 16
 187' FNL & 470' FEL (NENE) (BOTTOM)
 LOCATED IN SECTION 15
 T4N, R67W, 6TH P.M.
 WELD COUNTY, COLORADO

**Kerr-McGee Oil &
 Gas Onshore L.P.**
 1099 18th Street
 Denver, Colorado 80202



CONSULTING, LLC

SHERIDAN OFFICE
 1095 Saberton Avenue
 Sheridan, Wyoming 82801
 Phone 307-674-0609

LOVELAND OFFICE
 6706 North Franklin Avenue
 Loveland, Colorado 80538
 Phone 970-776-4331

DRAFTED BY:	LMO	CHECKED BY:	RKF	SHEET NO:
DATE DRAFTED:	2/19/19	DATE SURVEYED:	1/8/2020	1
REVISED:	2/17/2020	FILE NAME:	17-174	1 OF 2

T4N, R67W

NW. COR.
SEC. 15, T4N, R67W
FOUND 3 1/4" ALUM. CAP
ILLEGIBLE

N. 1/4 COR.
SEC. 15, T4N, R67W
FOUND 3 1/4" ALUM. CAP
L.S. NO. 13155

E. 1/16 COR.
SEC. 10 & SEC. 15, T4N, R67W
FOUND 2 1/2" ALUM. CAP
L.S. NO. 25619

NE. COR.
SEC. 15, T4N, R67W
FOUND 2" ALUM. CAP
P.L.S. NO. 24302

N 89°15'51" W 2616.10' (M)

N 89°15'42" W
1319.64' (M)

N 89°16'04" W
1320.00' (M)

S 88°59'20" E 9472' GRID
S 88°36'02" E TRUE
N 83°20'40" E MAGNETIC

BOTTOM OF HOLE:
187' FNL & 470' FEL

470'
187'

N 00°28'46" W
1318.61' (M)

N. 1/16 COR.
SEC. 14 & SEC. 15
T4N, R67W
FOUND 3 1/4"
ALUM. CAP
L.S. NO. 34995

N 00°28'30" W
1318.80' (M)

E. 1/4 COR.
SEC. 15, T4N, R67W
FOUND 2 1/2" ALUM. CAP
ILLEGIBLE

15

N 88°45'37" W
2616.51' (M)

CENTER 1/4 COR.
SEC. 15, T4N, R67W
FOUND 2 1/2" ALUM. CAP
L.S. NO. 38230

N 88°45'37" W
2628.20' (M)

SURFACE LOCATION: NAD 83
GROUND ELEVATION= 4889.4'
LATITUDE= 40.311112°
LONGITUDE= -104.899056°
LATITUDE= 40°18'40.002"
LONGITUDE= -104°53'56.602"
HEEL LOCATION: NAD 83
LATITUDE= 40.319575°
LONGITUDE= -104.903316°
LATITUDE= 40°19'10.469"
LONGITUDE= -104°54'11.939"
BOTTOM HOLE LOCATION: NAD 83
LATITUDE= 40.318936°
LONGITUDE= -104.869359°
LATITUDE= 40°19'08.170"
LONGITUDE= -104°52'09.692"

MATCH LINE
SEE SHEET 1

SW. COR.
SEC. 15, T4N, R67W
FOUND 3 1/4"
ALUM. CAP
L.S. NO. 34995

N 88°37'25" W 2615.88' (M)

S. 1/4 COR.
SEC. 15, T4N, R67W
FOUND 2 1/2" ALUM. CAP
ILLEGIBLE

N 88°37'52" W 2616.35' (M)

SE. COR.
SEC. 15, T4N, R67W
FOUND 3 1/4" ALUM. CAP
L.S. NO. 4392

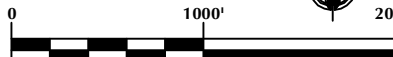
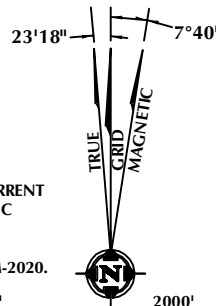
CERTIFICATE OF SURVEYOR:

THIS IS TO CERTIFY THAT THE ABOVE PLAT WAS PREPARED FROM FIELD NOTES OF ACTUAL SURVEY MADE BY ME OR UNDER MY SUPERVISION AND IS THE SAME AS TRUE AND CORRECT TO THE BEST OF MY KNOWLEDGE AND BELIEF. THIS CERTIFICATE DOES NOT REPRESENT A LAND SURVEY PLAT OR IMPROVEMENT SURVEY PLAT AS DEFINED BY C.S. 19-51-302 AND CANNOT BE RELIED UPON TO DETERMINE OWNERSHIP.

Randall K. French
PROFESSIONAL LAND SURVEYOR
2/17/2020
COLORADO REGISTRATION NUMBER: 38512

NOTICE:
ACCORDING TO COLORADO STATE LAW YOU MUST COMMENCE NO LEGAL ACTION BASED UPON ANY DEFECT IN THIS SURVEY WITHIN THREE YEARS AFTER YOU FIRST DISCOVER SUCH DEFECT. IN NO EVENT MAY ANY ACTION BASED UPON ANY DEFECT IN THIS SURVEY BE COMMENCED MORE THAN TEN YEARS FROM THE DATE ON THE CERTIFICATION SHOWN HEREON.

NOTE:
MAGNETIC NORTH IS CURRENT
AS OF 1/8/2020. MAGNETIC
NORTH CHANGES
WEST 0°06' PER YEAR.
MAGNETIC MODEL: WMM-2020.



SCALE: 1" = 1000'

NOTES:

- ▲ INDICATES SECTION CORNER.
- INDICATES CALCULATED CORNER.
- DRAWING LATITUDE AND LONGITUDE COORDINATES ARE NAD 83 (2011)(EPOCH:2010).
- ELEVATION BASED ON NAVD88 (GEOID12B).
- BASIS OF BEARING DERIVED FROM COLORADO COORDINATE SYSTEM OF 1983 NORTH ZONE.
- ALL MEASURED DISTANCES ARE GRID.
COMBINED SCALE FACTOR: .99972777 CALCULATED FROM THE NE. CORNER OF SECTION 16, T4N, R67W.
- OPERATOR: RYAN GROVES / PDOP = 2.0.
- SEE ADDENDUM TO WELL LOCATION CERTIFICATE FOR EXISTING IMPROVEMENTS WITHIN 500' OF THE WELL PAD.
- WELL FOOTAGES ARE MEASURED AT RIGHT ANGLES TO THE SECTION LINES.
- THE BOTTOM OF HOLE BEARS S88°59'20"E, 9472' FROM THE HEEL LOCATION.

WELL PAD - POINT THREE 11-16HZ

POINT THREE 16-1HZ
WELL LOCATION CERTIFICATE
2025' FSL & 1876' FWL (NESW) (SURFACE)
183' FNL & 740' FWL (NWNW) (HEEL)
LOCATED IN SECTION 16
187' FNL & 470' FEL (NENE) (BOTTOM)
LOCATED IN SECTION 15
T4N, R67W, 6TH P.M.
WELD COUNTY, COLORADO

Kerr-McGee Oil &
Gas Onshore L.P.
1099 18th Street
Denver, Colorado 80202

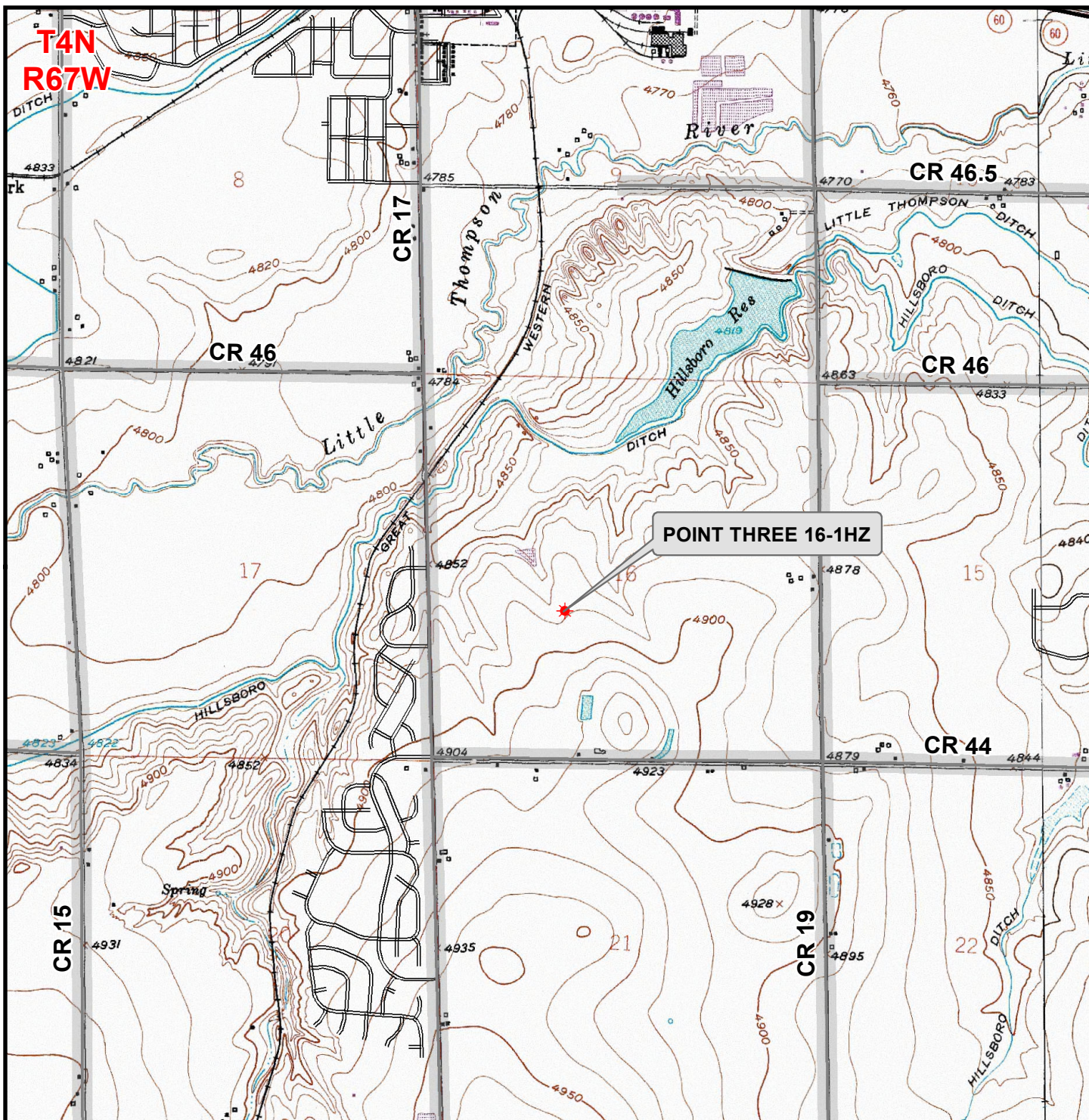


CONSULTING, LLC

SHERIDAN OFFICE
1095 Saberton Avenue
Sheridan, Wyoming 82801
Phone 307-674-0609

LOVELAND OFFICE
6706 North Franklin Avenue
Loveland, Colorado 80538
Phone 970-776-4331

DRAFTED BY:	LMO	CHECKED BY:	RKF	SHEET NO:
DATE DRAFTED:	2/17/2020	DATE SURVEYED:	1/8/2020	2
REVISED:		FILE NAME:	17-174	2 OF 2



Legend

- ★ Well - Proposed
- ==== Road - Primitive - Existing
- Road - County - Existing
- Road - Improved - Existing
- Road - Highway - Existing

WELL PAD - POINT THREE 11-16HZ

**GENERAL LOCATION MAP
POINT THREE 16-1HZ
LOCATED IN SECTION 16
T4N, R67W, 6th P.M.
WELD COUNTY, COLORADO**

Kerr-McGee Oil & Gas Onshore L.P.

1099 18th Street
Denver, Colorado 80202



CONSULTING, LLC

SHERIDAN OFFICE
1095 Saberton Avenue
Sheridan, Wyoming 82801
Phone 307-674-0609

LOVELAND OFFICE
6706 North Franklin Avenue
Loveland, Colorado 80538
Phone 970-776-4331



SCALE: 1" = 2,000ft

NAD83 CO-Nft

DRAWN: DP

DATE: 17 Feb 2020

REVISED:

DATE: